



PROPERTY DESCRIPTION

Discover an extraordinary +/-26,800 SF space in the heart of Wilmington, DE! This one-of-a-kind property, located under a parking garage on North Market Street, sits directly across from the newly renovated Hercules Building. Previously home to Kirkwood Fitness, the space has been fully opened up, offering endless possibilities for a multitude of potential uses. **With a leasehold interest and 59 years remaining, this property is ideal for long-term gym operations.**

PROPERTY DETAILS

- **Size:** +/- 26,800 SF (expansion possible)
- **Sale Price:** \$1,100,000
- **Lease Rate:** \$4.50/SF + utilities
- **Access:** Street-level staircase & roll-up door on King St.
- **Ceiling Height:** 12' 10" - 30' 6"
- **Signage:** Multiple options
- **Parking:** On-site
- Sprinklered

DEMOGRAPHICS	1 MILE	3 MILES	5 MILES
Total Population	34,856	107,492	189,623
Total Households	16,995	49,940	82,954
Average HH Income	\$49,091	\$69,568	\$79,668
Median Age	36.6	38.3	39.2

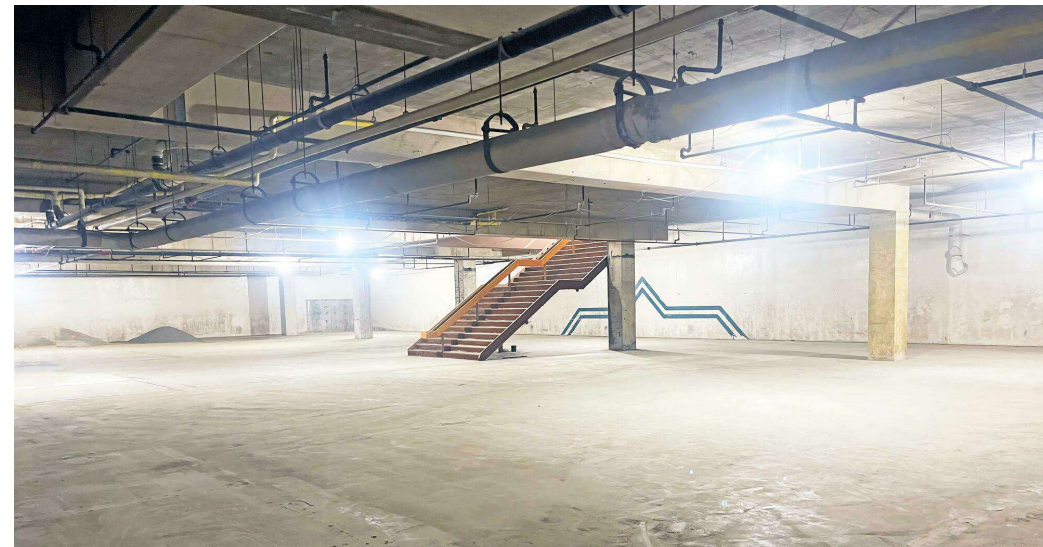
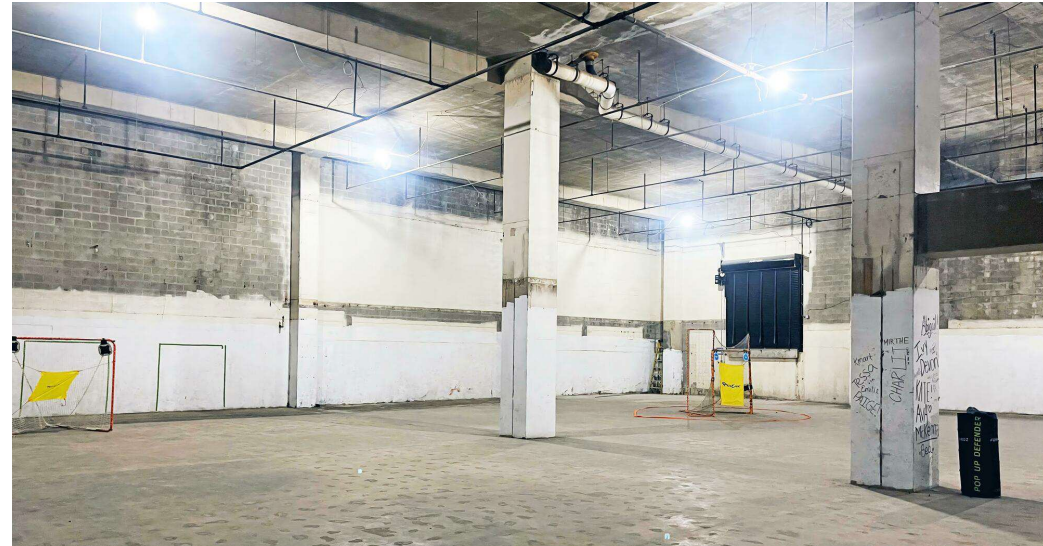


For More Information, Contact:

Griffin Conaty
gconaty@dsmre.com
302.283.1800 Office
302.545.2061 Cell

Dan Wham
dwham@dsmre.com
302.283.1800 Office
302.249.9744 Cell

DSM Commercial
Real Estate Services
3304 Old Capitol Trail
Wilmington, DE 19808
dsmre.com



For More Information, Contact:

Griffin Conaty
gconaty@dsmre.com
302.283.1800 Office
302.545.2061 Cell

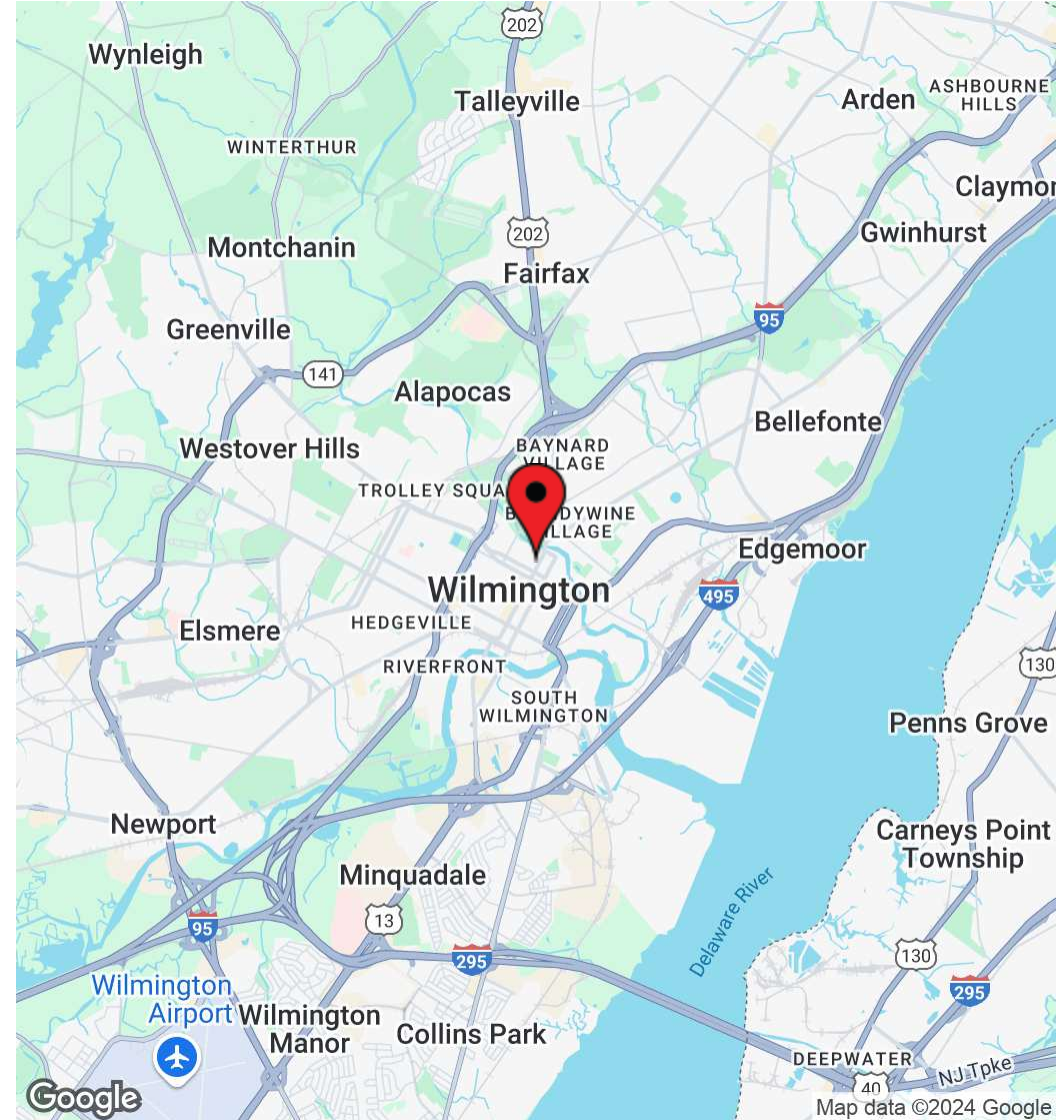
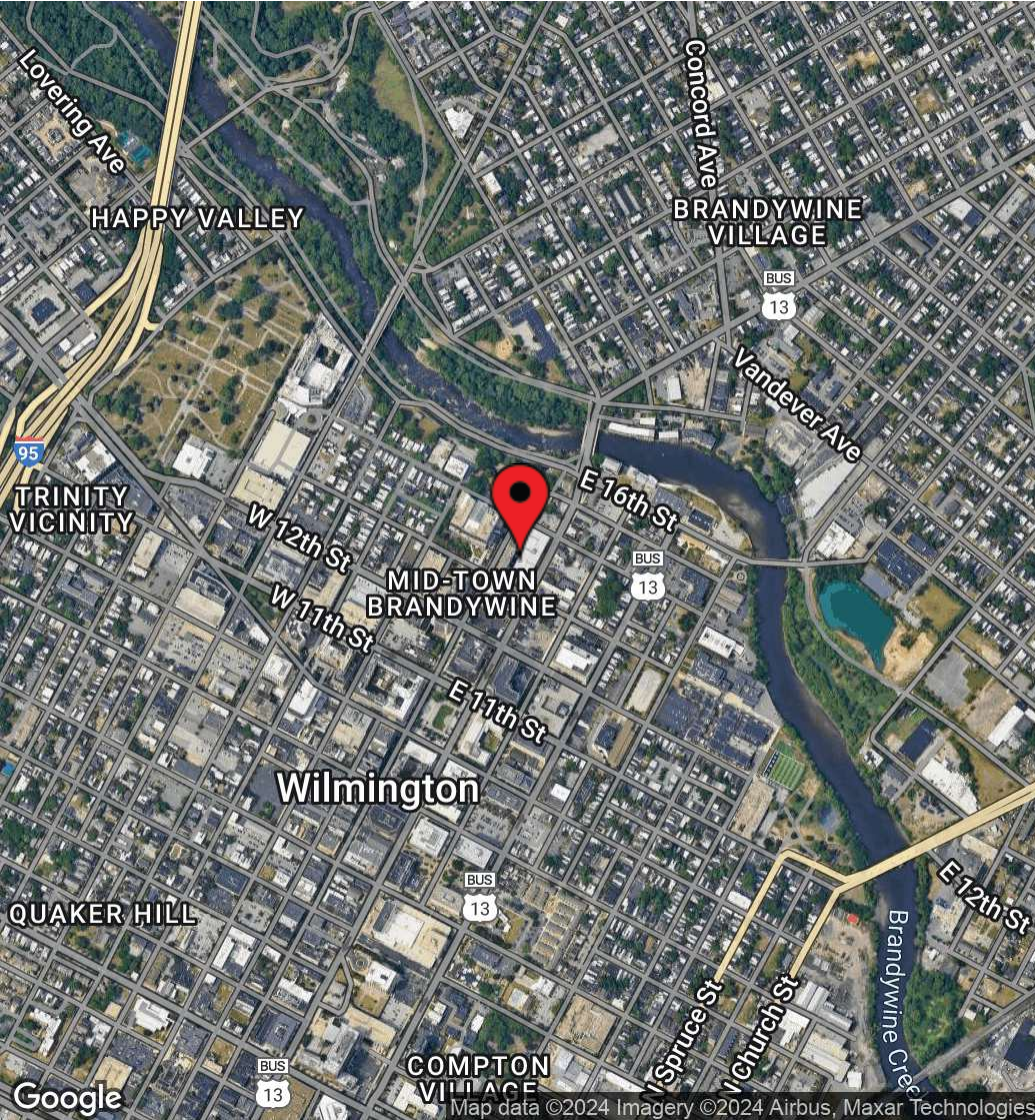
Dan Wham
dwham@dsmre.com
302.283.1800 Office
302.249.9744 Cell

DSM Commercial
Real Estate Services
3304 Old Capitol Trail
Wilmington, DE 19808
dsmre.com



1320 N Market Street
Wilmington, DE 19801

SPECIAL PURPOSE PROPERTY FOR SALE/LEASE



For More Information, Contact:

Griffin Conaty
gconaty@dsmre.com
302.283.1800 Office
302.545.2061 Cell

Dan Wham
dwham@dsmre.com
302.283.1800 Office
302.249.9744 Cell

DSM Commercial
Real Estate Services
3304 Old Capitol Trail
Wilmington, DE 19808
dsmre.com