

FOR SUBLEASE



NEWMARK

MOUNTAIN WEST

PETER BLACK

pblack@newmarkmw.com

direct 801.971.9425

[View Profile](#)

PROPERTY DETAILS

1405 West 2200 South, Salt Lake City, UT 84119

BUILDING SPECIFICATIONS

- Total Available: 19,244 RSF (Divisible)
- 1st Floor: 2,039 RSF or 4,171 RSF (Combined Floor 6,290 SF)
- 3rd Floor: 2,152 RSF or 4,695 RSF or 6,187 RSF (Combined Floor: 13,034)
- Lease Rate: \$18.50/RSF, Full Service
- Lease Term: Through 8/31/2030
- Parking: 4.3/1,000 RSF (Surface)

MOVE-IN READY FEATURES

- Fully furnished on all floors- immediate occupancy
- Complete interior renovation (2016)
- LED lighting throughout
- Enterprise-grade backup generator
- Freeway signage opportunity

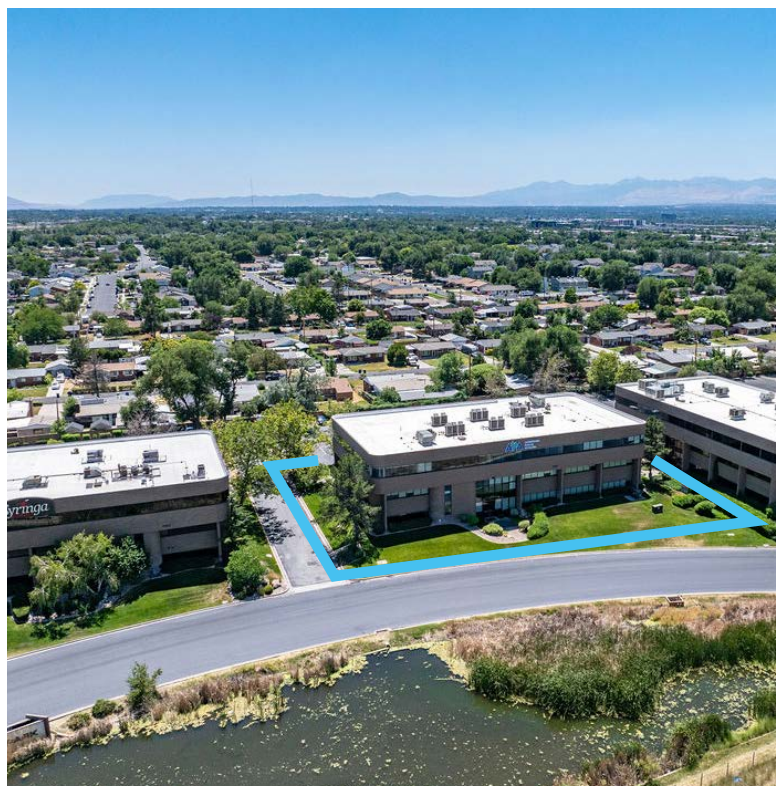
PREMIUM AMENITIES

- Full-service fitness center with lockers and showers
- Large training/conference facility
- Common break room with kitchen
- Modern lobby
- 5,044 SF of common areas

FULL SERVICE COMMERCIAL REAL ESTATE

312 East South Temple
Salt Lake City, Utah 84111
Office 801.456.8800

www.newmarkmw.com



NEWMARK

MOUNTAIN WEST

PETER BLACK

pblack@newmarkmw.com

direct 801.971.9425

[View Profile](#)

**FULL SERVICE
COMMERCIAL REAL ESTATE**

312 East South Temple

Salt Lake City, Utah 84111

Office 801.456.8800

www.newmarkmw.com

FIRST FLOOR PLAN

CLICK FOR
VIRTUAL TOUR

NEWMARK

MOUNTAIN WEST

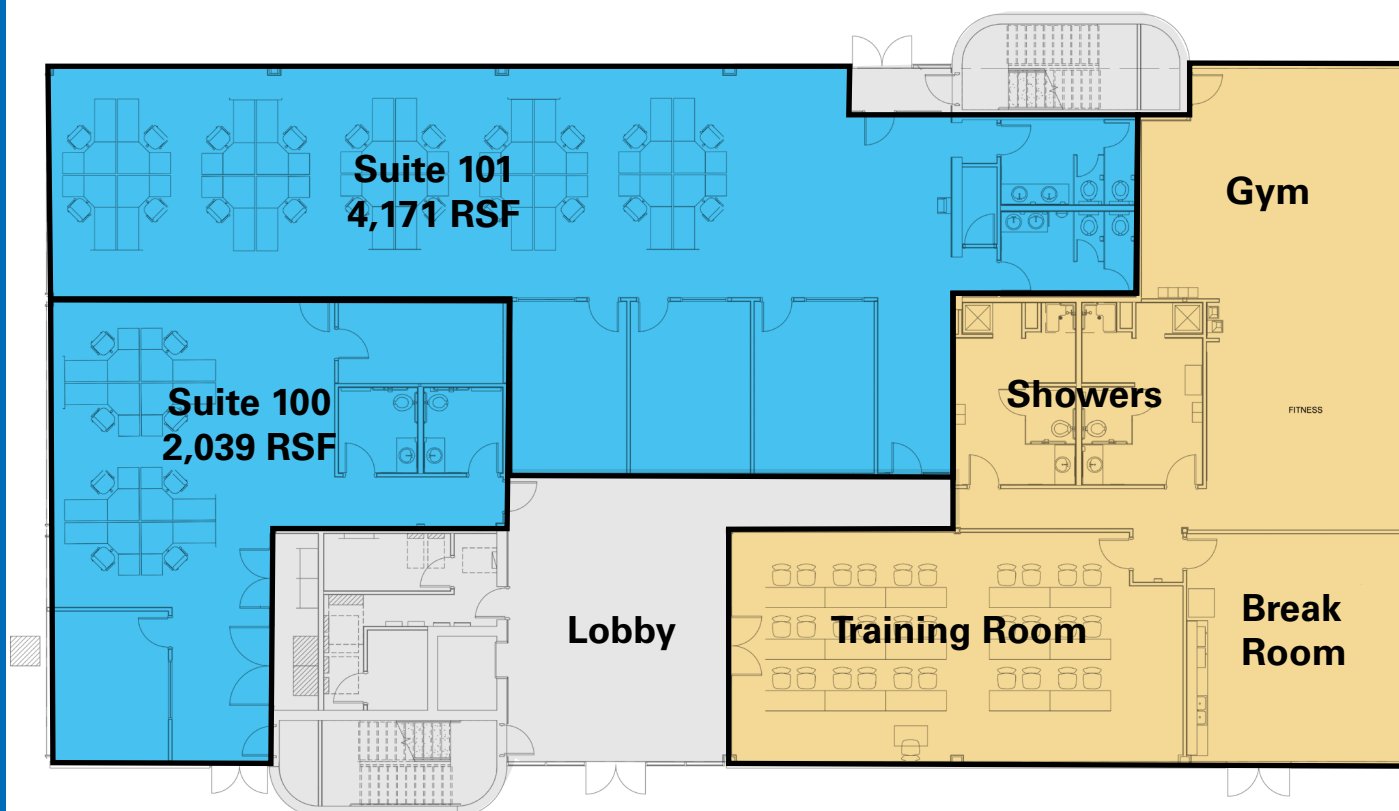
PETER BLACK

pblack@newmarkmw.com

direct 801.971.9425

[View Profile](#)

Combined Space: 6,210 RSF



- LEASED
- AMENITY SPACE
- AVAILABLE
- COMMON AREA

FULL SERVICE
COMMERCIAL REAL ESTATE
312 East South Temple
Salt Lake City, Utah 84111
Office 801.456.8800
www.newmarkmw.com

SECOND FLOOR PLAN

CLICK FOR
VIRTUAL TOUR

NEWMARK

MOUNTAIN WEST

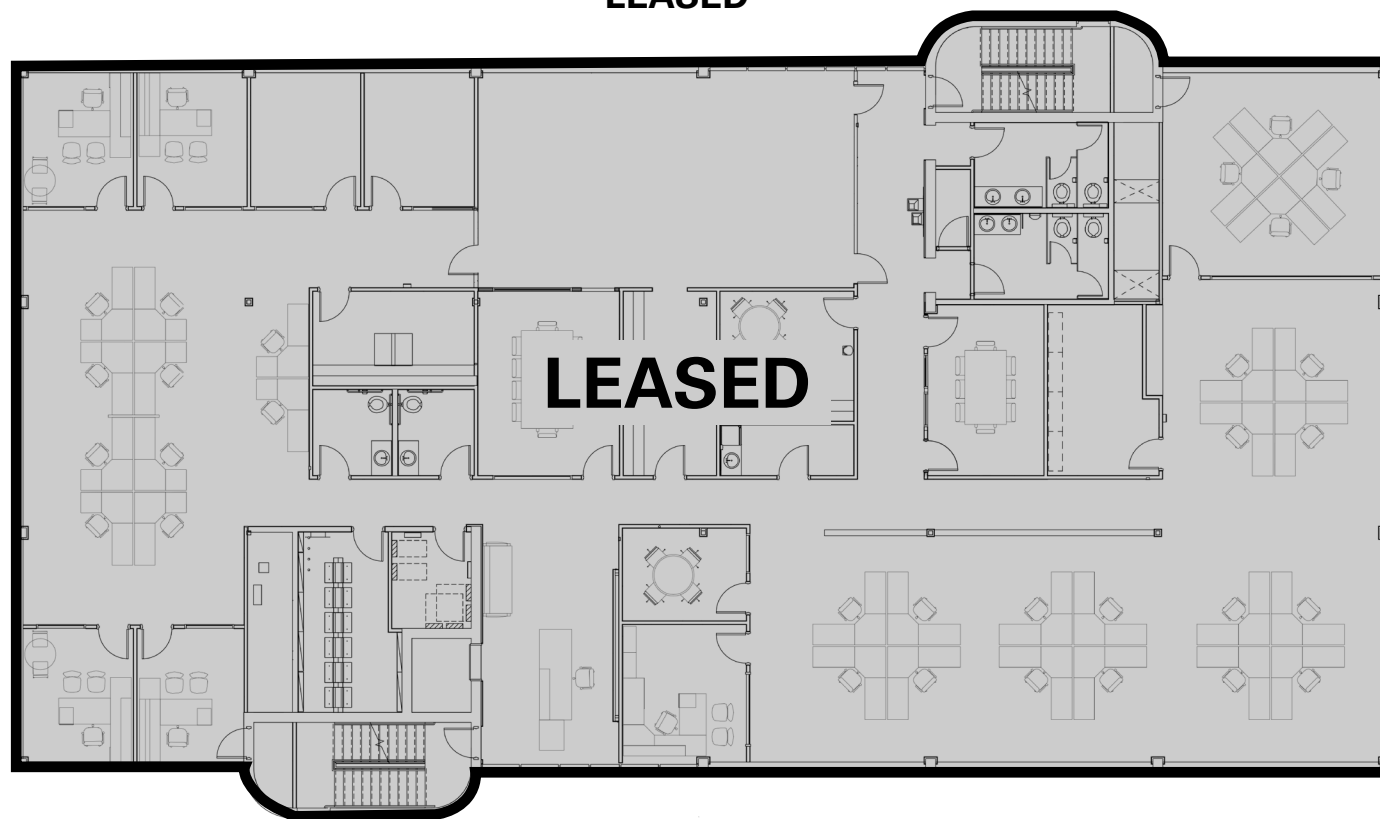
PETER BLACK

pblack@newmarkmw.com

direct 801.971.9425

[View Profile](#)

**Suite 200 - 10,088 RSF
LEASED**



- LEASED
- AMENITY SPACE
- AVAILABLE

**FULL SERVICE
COMMERCIAL REAL ESTATE**

312 East South Temple

Salt Lake City, Utah 84111

Office 801.456.8800

www.newmarkmw.com

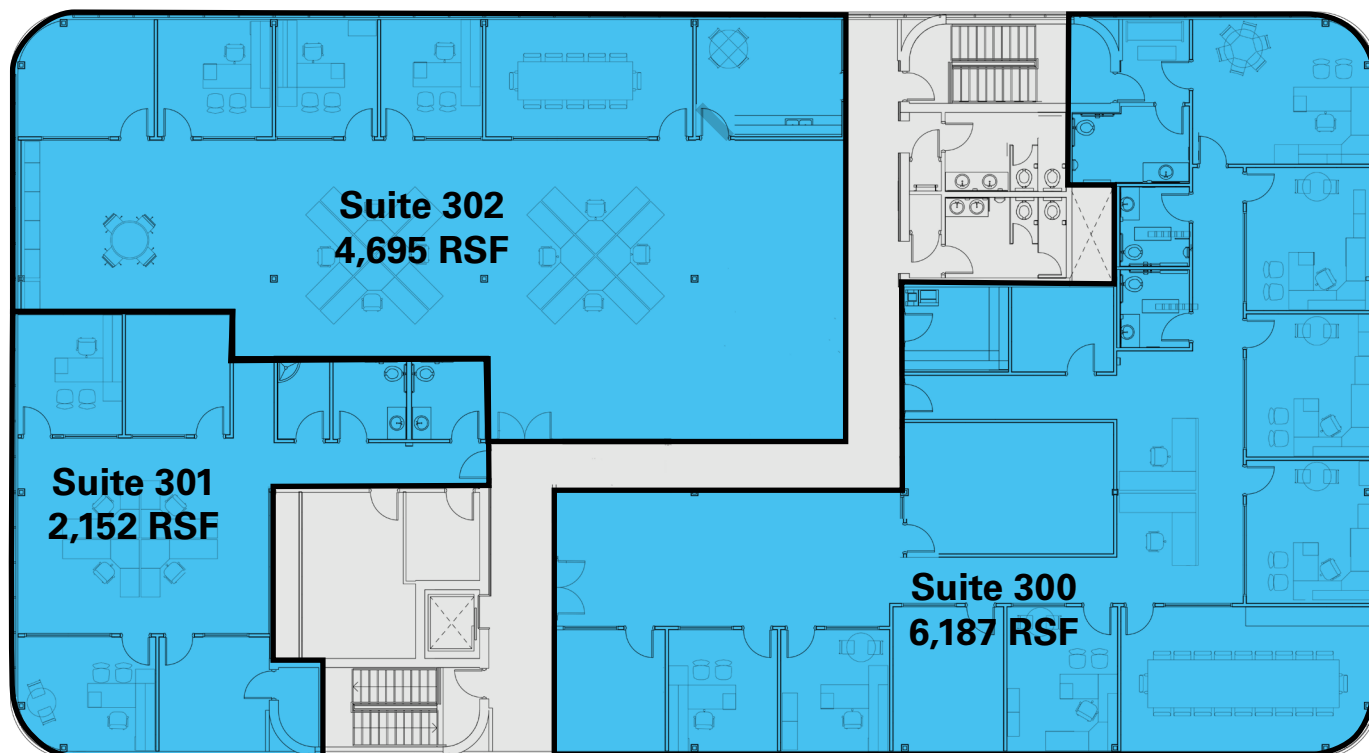
THIRD FLOOR PLAN

CLICK FOR
VIRTUAL TOUR



PETER BLACK
pblack@newmarkmw.com
direct 801.971.9425
[View Profile](#)

Full Floor: 13,034 RSF



- LEASED
- AVAILABLE
- COMMON AREA

**FULL SERVICE
COMMERCIAL REAL ESTATE**
312 East South Temple
Salt Lake City, Utah 84111
Office 801.456.8800
www.newmarkmw.com



NEWMARK

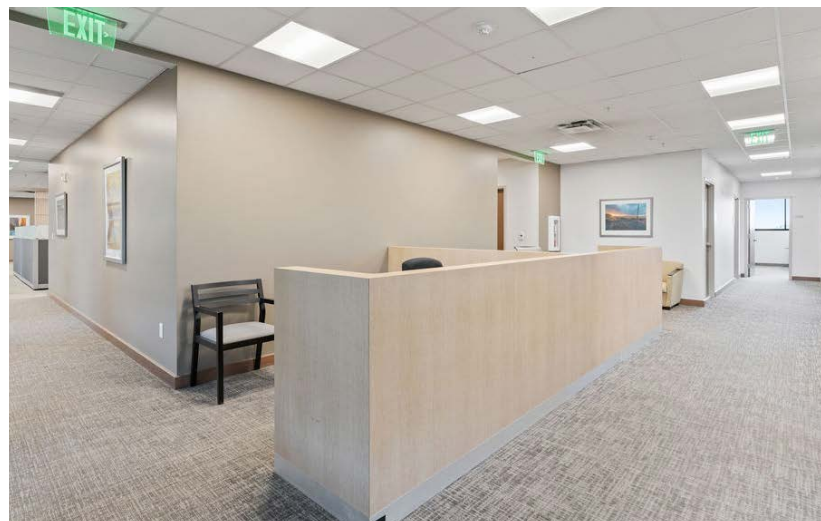
MOUNTAIN WEST

PETER BLACK

pblack@newmarkmw.com

direct 801.971.9425

[View Profile](#)



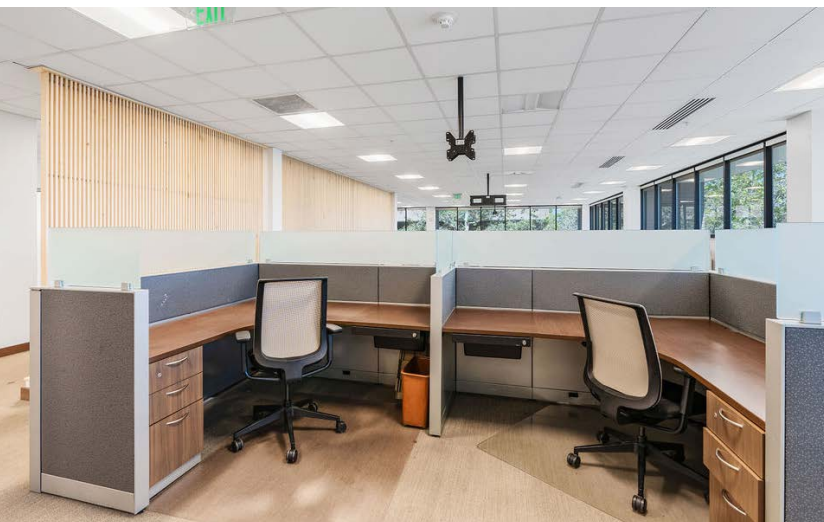
**FULL SERVICE
COMMERCIAL REAL ESTATE**

312 East South Temple

Salt Lake City, Utah 84111

Office 801.456.8800

www.newmarkmw.com



NEWMARK

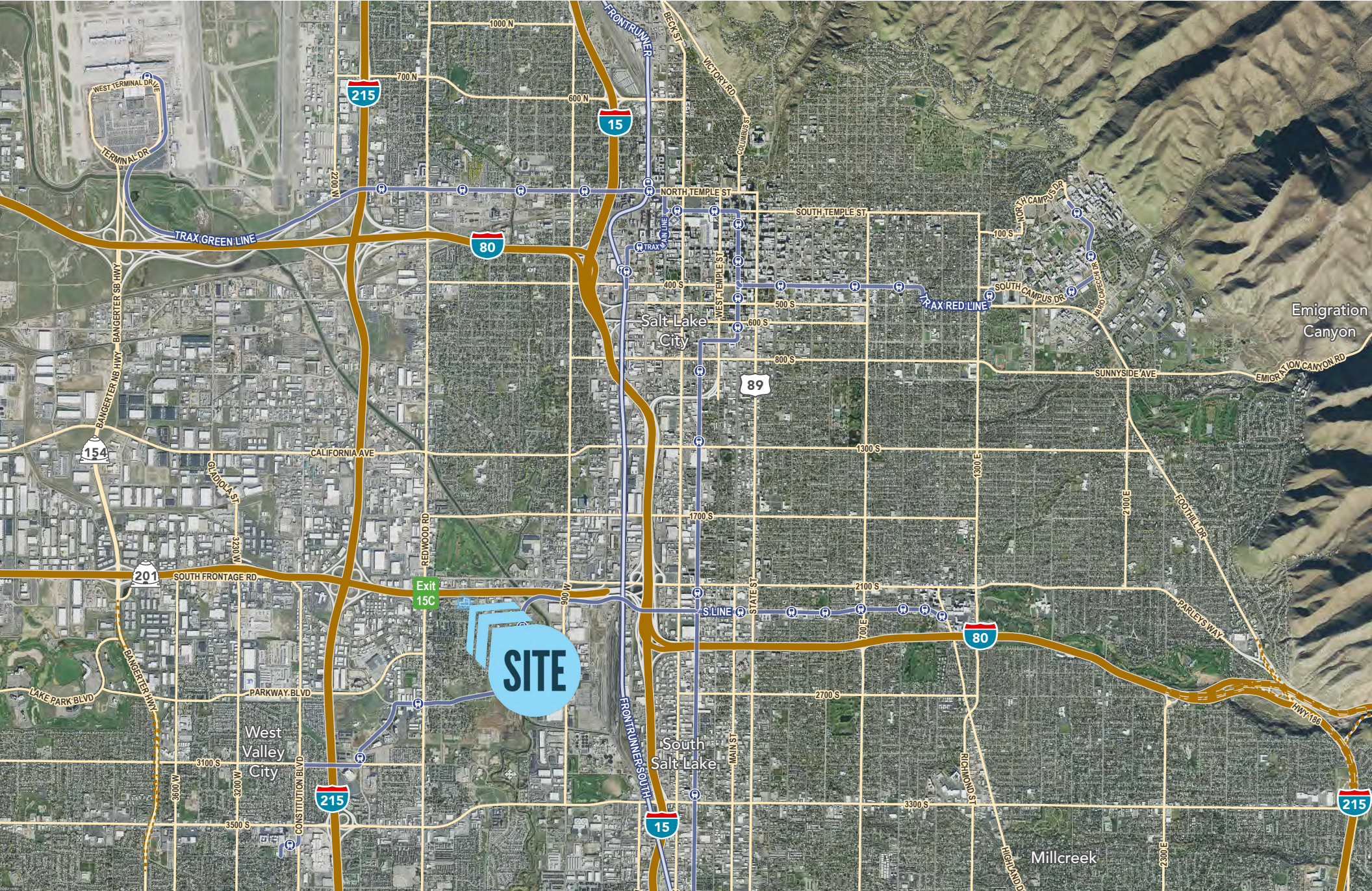
MOUNTAIN WEST

PETER BLACK
pblack@newmarkmw.com
direct 801.971.9425
[View Profile](#)

**FULL SERVICE
COMMERCIAL REAL ESTATE**
312 East South Temple
Salt Lake City, Utah 84111
Office 801.456.8800
www.newmarkmw.com



www.newmarkmw.com



PETER BLACK
pblack@newmarkmw.com
direct 801.971.9425
[View Profile](#)

**FULL SERVICE
COMMERCIAL REAL ESTATE**
312 East South Temple
Salt Lake City, Utah 84111
Office 801.456.8800
www.newmarkmw.com