

# 140 & 148 East Street, Pittsboro

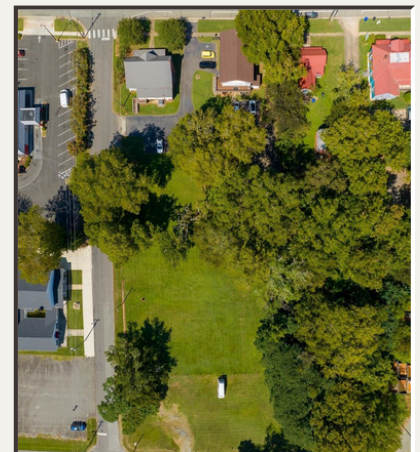
\$1,350,000

1.49 Acres



## For Sale

Discover a unique opportunity with these two well-maintained office buildings situated in the heart of picturesque Pittsboro. Positioned along the main street, these properties offer exceptional visibility and easy access for clients and employees. Each building boasts a welcoming atmosphere with modern amenities. Ideal for small businesses or professional offices looking to tap into a supportive local community. Two adjacent vacant lots are included and could be used for possible expansion. Close to Justice Center District 15B Courthouse and convenient to downtown shops and restaurants.



**Eric Andrews, ALC**  
(919) 542-0523  
eric@ericandrewsrealtor.com

73 Hillsboro Street (P.O. Box 1400)  
Pittsboro, NC 27312  
919-548-1014 Txt

