

18 N. Wabash Avenue

CHICAGO, IL 60602

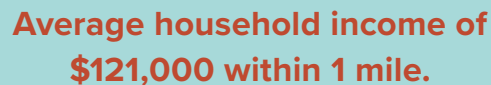
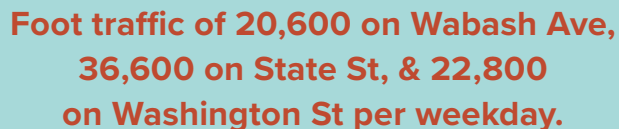
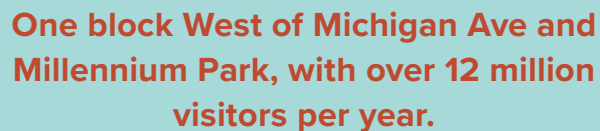


Joe Storiz
Senior Managing Director
312.994.5656
jstoriz@marcrealty.com



Exceptional Value
Remarkable Locations

1,500 RSF - 5,400 RSF

The Walgreens logo, featuring the word "Walgreens" in a red, cursive script font.



SPACE FEATURES

| Up to 5,400 RSF

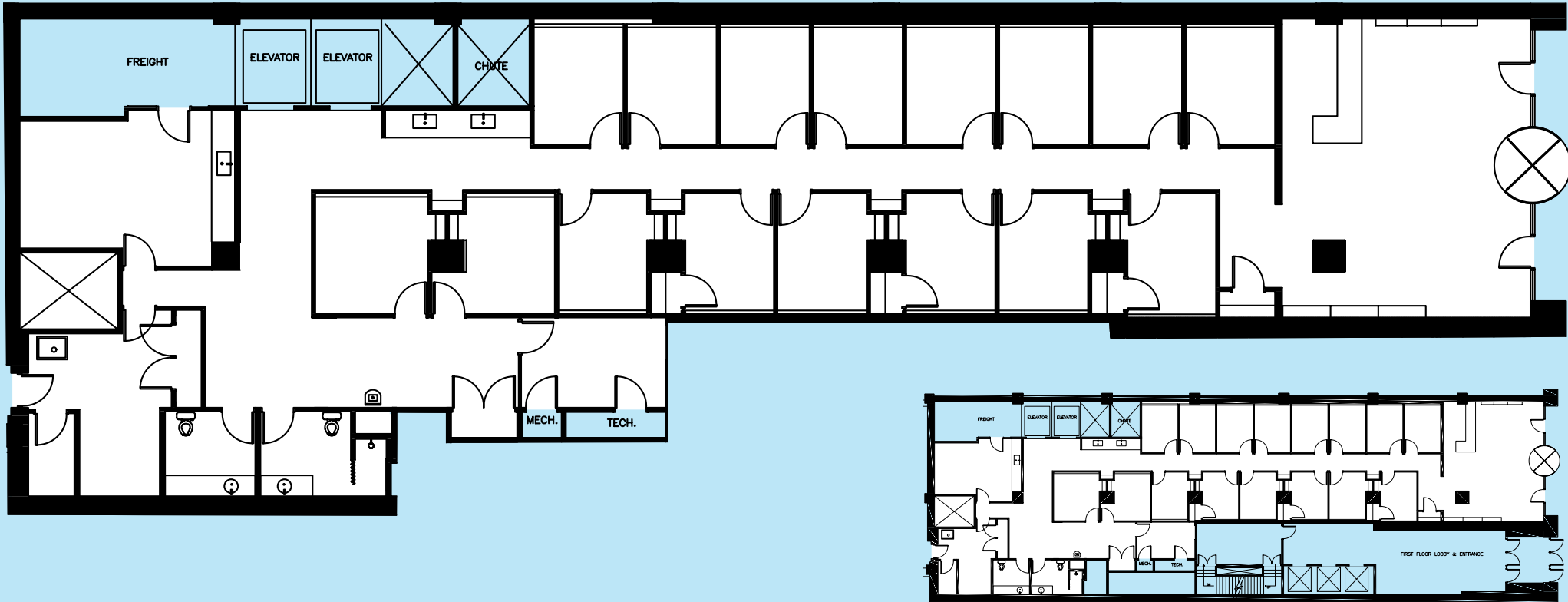
| 25'0" linear frontage on Wabash Ave

| 18' Ceiling Height

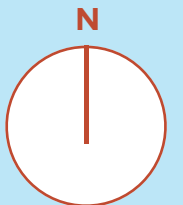
| Entrance directly across from Washington & Wabash "L" station

18 N. Wabash Avenue

CHICAGO, IL 60602



SUITE 100 | DIVISIBLE FROM 1,500 TO 5,400 RSF



JOE STORIZ

Senior Managing Director
312.994.5656 | jstoriz@marcrealty.com

180 N Wabash, Suite 800
Chicago, IL 60601



Exceptional Value
Remarkable Locations

All information contained herein is from sources deemed reliable and is submitted subject to errors, omissions and to change of price or terms without notice. There is common ownership of the building or buildings referenced herein and Marc Realty LLC.TW

THE BEST LOCATED BUILDINGS

CHICAGO

Striving to deliver the highest level of service within all aspects of our business. We pride ourselves in having a strong local knowledge of the real estate market with an equally strong understanding of our tenant's business needs. This allows us to better serve our individual clients by matching up their unique requirements with the best real estate decisions.



**MORE SPACES AVAILABLE
AT MARCREALTY.COM**

JOE STORIZ

Senior Managing Director
312.994.5656 | jstoriz@marcrealty.com

180 N Wabash Ave, Suite 800
Chicago, IL 60604



Exceptional Value
Remarkable Locations

All information contained herein is from sources deemed reliable and is submitted subject to errors, omissions and to change of price or terms without notice. There is common ownership of the building or buildings referenced herein and Marc Realty LLC.TW