

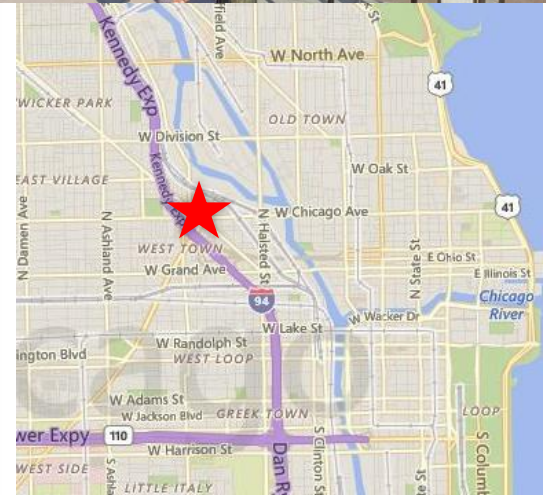
# FOR LEASE

## PROFESSIONAL OFFICE SPACE

**805 N. Milwaukee**  
(River West Neighborhood)  
Chicago, Illinois 60642



- Several office space available; Suite #300 2,715 RSF, Suite #301 1,961 RSF or full 3<sup>rd</sup> floor 4,676 RSF. Suite #400 2,142 and Suite #500 1,171 plus private rooftop deck.
- Fully built out with mix of private offices and open spaces, conference rooms and kitchenettes.
- Interior bike racks and off-street parking available.
- Ideally located at the intersection of Milwaukee Ave. Chicago Ave. with great mix of new residential, restaurants and shops.
- Centrally located close to CBD, Wicker Park, West Loop.
- Easy access to I-90 (Ogden) and adjacent to the CTA Blue Line subway station.
- Beautiful views of the city from every window.





805 N. Milwaukee Ave., Chicago, Illinois

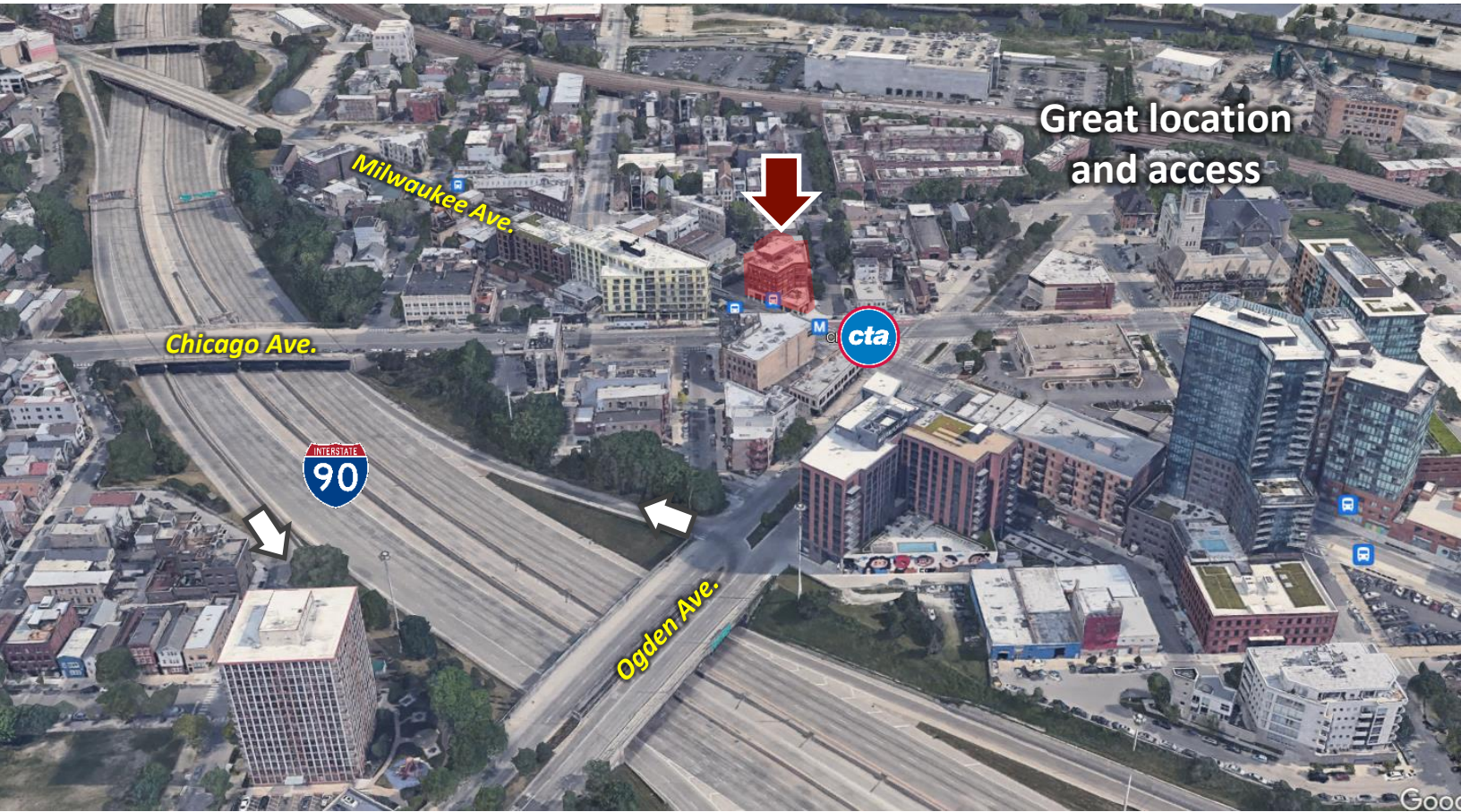


Image © 2023 Maxar Technologies

Joe Padorr 312.316.2300 jpadorr@seneca-re.com

SENECA  
REAL ESTATE GROUP



805 N. Milwaukee Ave., Chicago, Illinois



Joe Padorr

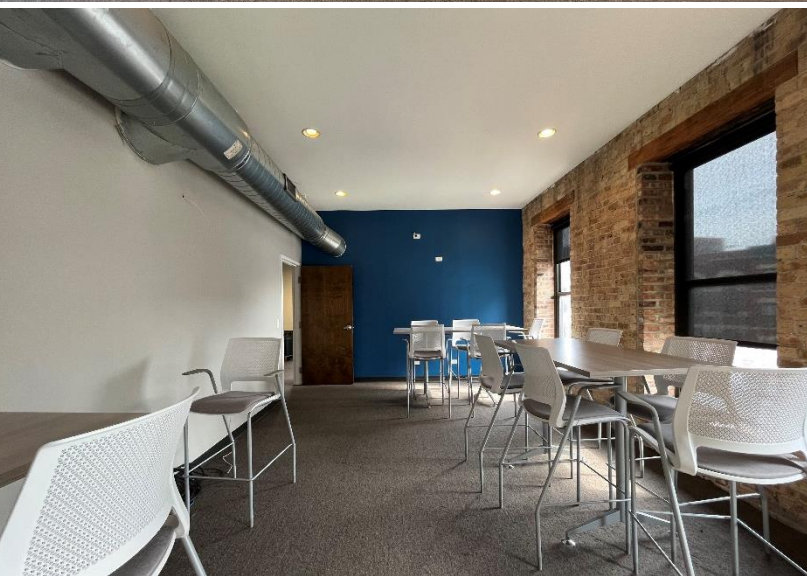
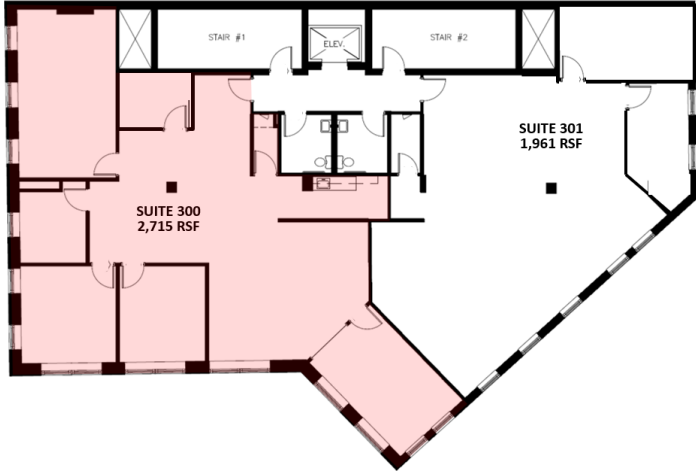
312.316.2300

jpadorr@seneca-re.com

**SENECA**  
REAL ESTATE GROUP

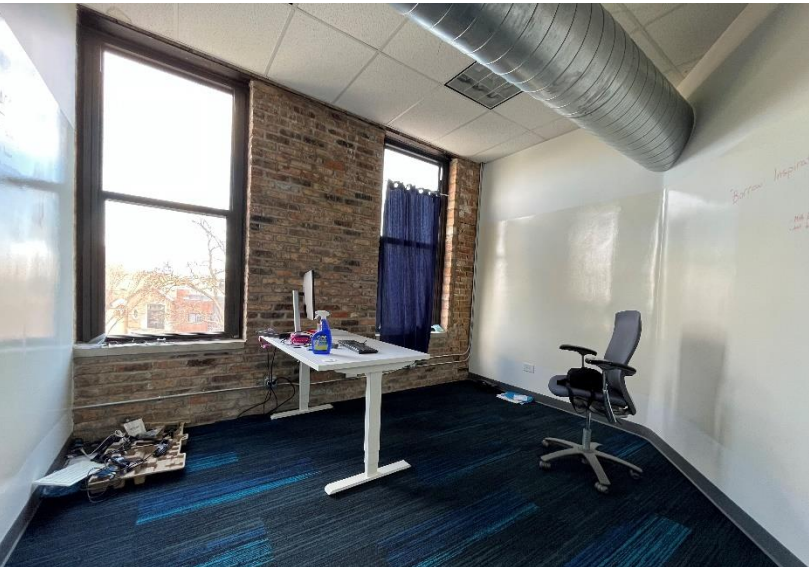
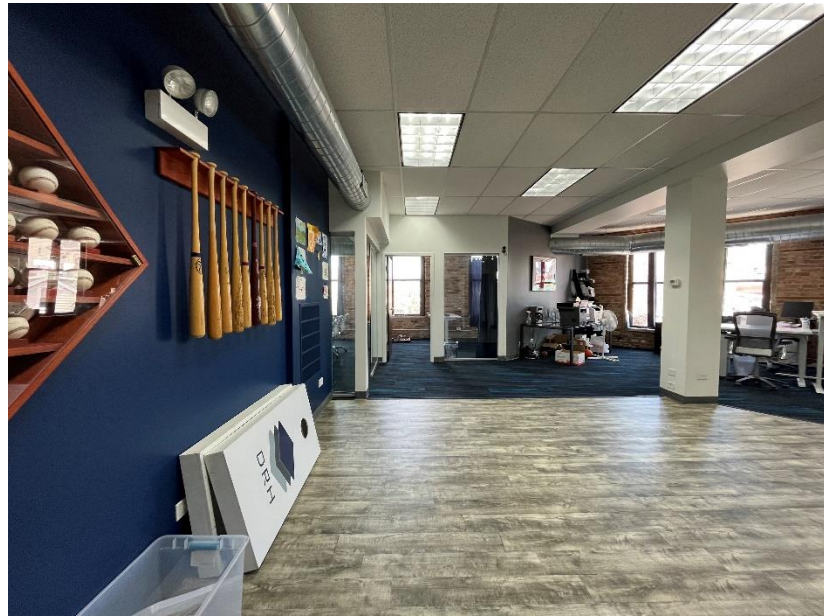
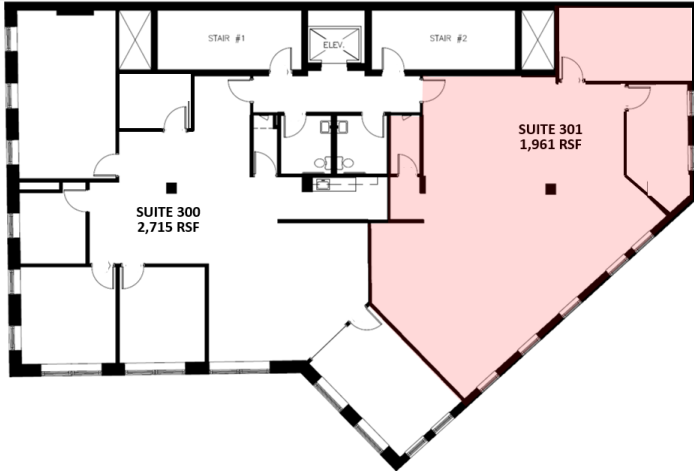


# Suite 300: 2,715 RSF (combinable with suite 301 for 4,676 RSF)



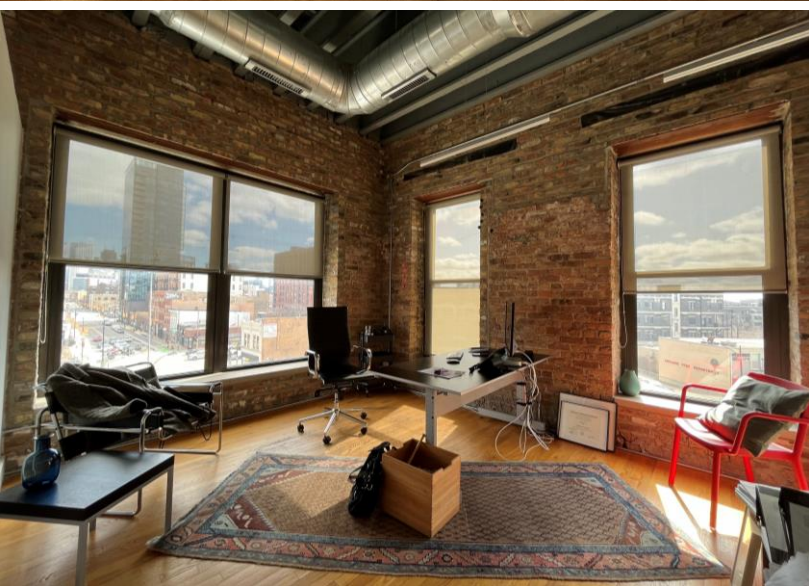
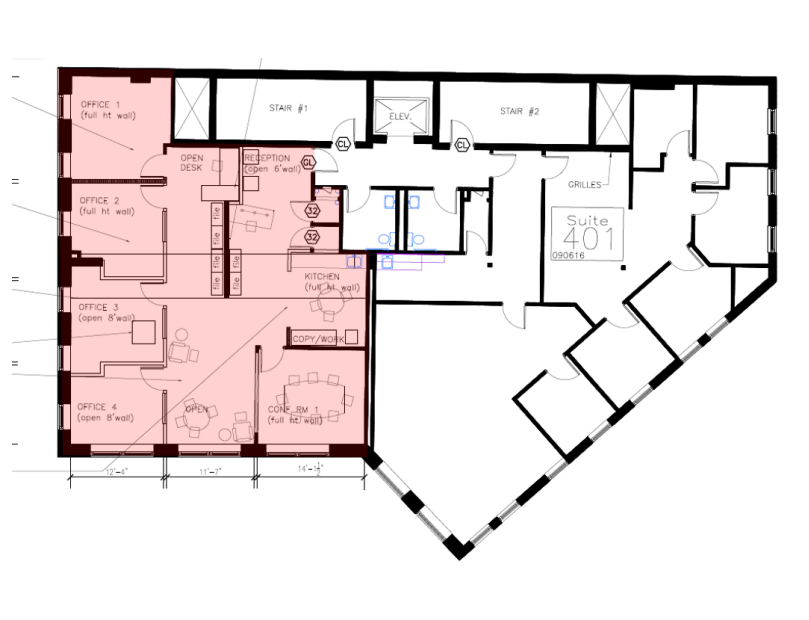


# Suite 301: 1,961 RSF (combinable with suite 300 for 4,676 RSF)



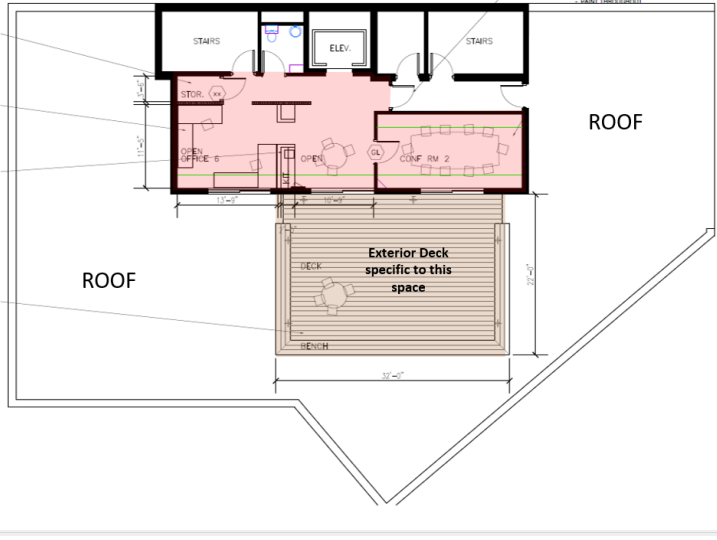


# Suite 400: 2,142 RSF






# Suite 500: 1,171 RSF plus rooftop deck





An aerial, black and white photograph of a city street intersection. The central focus is a large, multi-story brick building with a prominent corner entrance. The building has several floors of windows and a flat roof with some rooftop equipment. The street below shows a crosswalk with 'STOP' and 'BUS' markings, and a few cars and a truck. A bus stop shelter is visible on the right side of the street. The surrounding area is filled with other city buildings of varying heights and styles.

For Leasing Information or  
to schedule a tour contact:

Joe Padorr 312.316.2300  
[jpadorr@seneca-re.com](mailto:jpadorr@seneca-re.com)