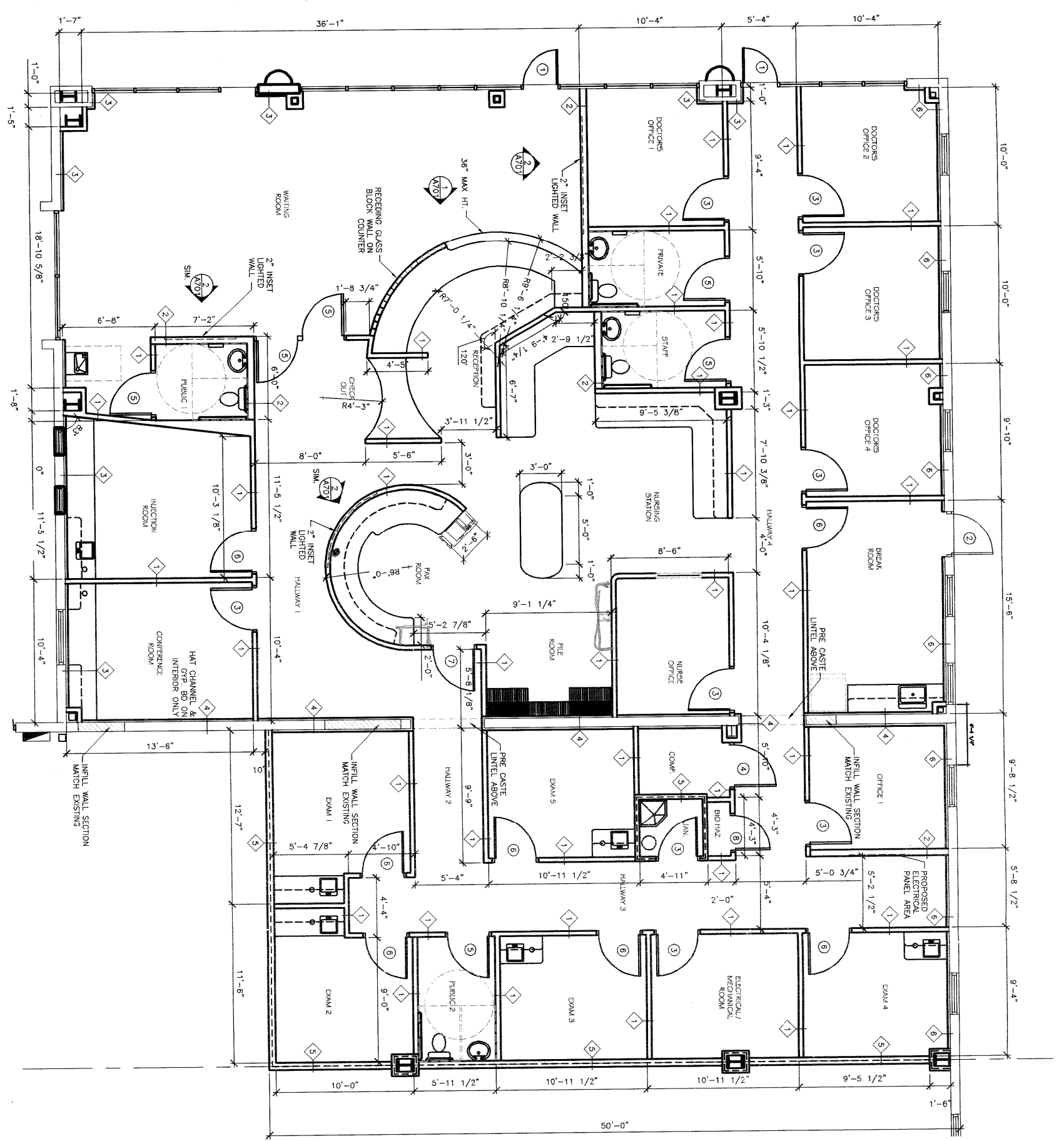
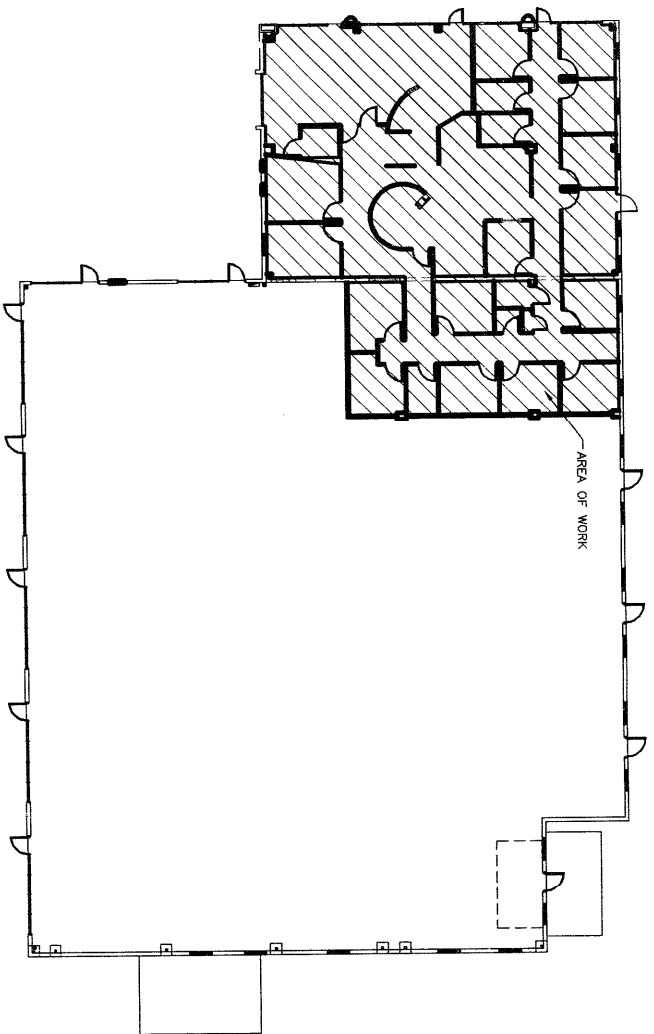


1 FLOOR PLAN
SCALE: 1/4"=1'-0"



2 KEY PLAN
SCALE: 1/16"=1'-0"



DOOR SCHEDULE

DOOR NO.	DOOR SIZE	TK	TYPE	FRAME	HARDWARE
1 (EXISTING)	3'-0" X 7'-0"	13/4	A	AL	BT MANUFACTURER
2 (EXISTING)	3'-0" X 7'-0"	13/4	D	HM	EXISTING
3	3'-0" X 6'-8"	13/4	B	WD	BT/CL
4	3'-0" X 6'-8"	13/4	B	WD	BT/CL
5	3'-0" X 6'-8"	13/4	C	WD	BT/CL, P6
6	3'-0" X 6'-8"	13/4	C	WD	BT/CL, PL
7	2'-6" X 6'-8"	13/4	B	WD	BT/CL

- NOTES:**
ALL NEW DOORS SHALL HAVE ADA COMPLIANT LEVER HANDLES
* INDICATES DOOR WITH 2 SETS OF BT AND CL HARDWARE
* REQUIRED FOR DOOR NUMBER INDICATED ON SCHEDULE
- HARDWARE KEY NOTES**
BT 1 1/2" PAIR#6 BUTT# (PER LEAF)
CL CLOSER
TH THRESHOLD
KL KEYPAD
PL PRIVACY LOCK
P6 PASSAGE LOCK
US WEATHER STRIPINGS
FB FLUSH BOLT (2)
KP KICK PLATE
ST WALL OR FLOOR STOP
P6 PANIC BAR (1 PER DOOR)
E6B ELECTRONIC FINCH BUTTON LOCK
ADA ADA POWER ASSISTED DOOR
DP SURFACE MTD. EXTERIOR DRIP

- DOOR TYPES**
SCALE: NONE
- A THERMOPANE GLASS (TTP)
 - B PAINTED SOLID WOOD DOOR
 - C PAINTED SOLID WOOD DOOR WITH GLASS
 - D PAINTED HOLLOW METAL DOOR

- WALL KEY NOTE LEGEND**
- 1) 3 5/8" STEEL STUD FRAMING (24" O.C.)
 - 2) 1/2" BATT INSULATION & 1/2" GYP BOARD OVER EACH SIDE UP & ABOVE THE CEILING.
 - 3) 6" MTL STUDS @ 24" O.C. W/ 3 1/2" BATT INSULATION & 5/8" GYP BD EACH SIDE UP & ABOVE THE CEILING.
 - 4) 1 1/2" MTL HAT CHANNELS @ 24" O.C. W/ 1/2" GYP BD & ABOVE CEILING.
 - 5) 1 HR. RATED WALL INSTALL ACCORDING TO UL L485 ON SHEET A01
 - 6) 1 1/2" MTL HAT CHANNELS @ 24" O.C. W/ 1/2" GYP BD & ABOVE CEILING.
 - 7) 1 1/2" MTL HAT CHANNELS @ 24" O.C. W/ 1/2" GYP BD & ABOVE CEILING ON BOTH SIDES.

A101

**CENTRAL AVENUE
DR. LARRANAGA
OFFICE BUILD OUT**
CITY OF KISSIMMEE, FLORIDA

Charles H. Parsons Architect, P.A.
Architects / Planners
500 East Monument Avenue, Suite B - Kissimmee, Florida 32741
Phone: (407) 847-4706 - Fax: (407) 848-9904 - E-mail: parsons@dag.net
Reg. #AB0000

NO.	REVISIONS