

BLOOMFIELD TOWN SQUARE



MID-AMERICA[®]
Real Estate-Michigan, Inc.

NEQ Telegraph & Square Lake Roads / Bloomfield Township, MI



AVAILABLE
3,035 SF

EVERY SEASON STARTS AT
DICK'S
SPORTING GOODS

TJ-maxx

five
BELOW

ULTA
BEAUTY



HomeGoods

PETSMART

DOLLAR TREE

COSTCO
WHOLESALE

IHOP



DEAL PENDING

47,248 VPD

TELEGRAPH ROAD

RETAIL OPPORTUNITY

BLOOMFIELD TOWN SQUARE



Address

NEQ Telegraph & Square Lake Roads
Bloomfield Township, MI 48302

Availability

Outlot Available (DEAL PENDING)
3,035 SF

Features

Bloomfield Town Square is located on Telegraph Road, just north of Square Lake Road in Bloomfield Township, Michigan. The property draws very high traffic volumes due to its location and co-tenants, which include Burlington, Dick's Sporting Goods, T.J. Maxx, HomeGoods and Costco. There is great access with multiple curb cuts on Telegraph Road and cross-access with Costco and At Home.

Traffic counts on Telegraph Road are 47,248 vpd.

Please contact brokers for more information.

Area Tenants



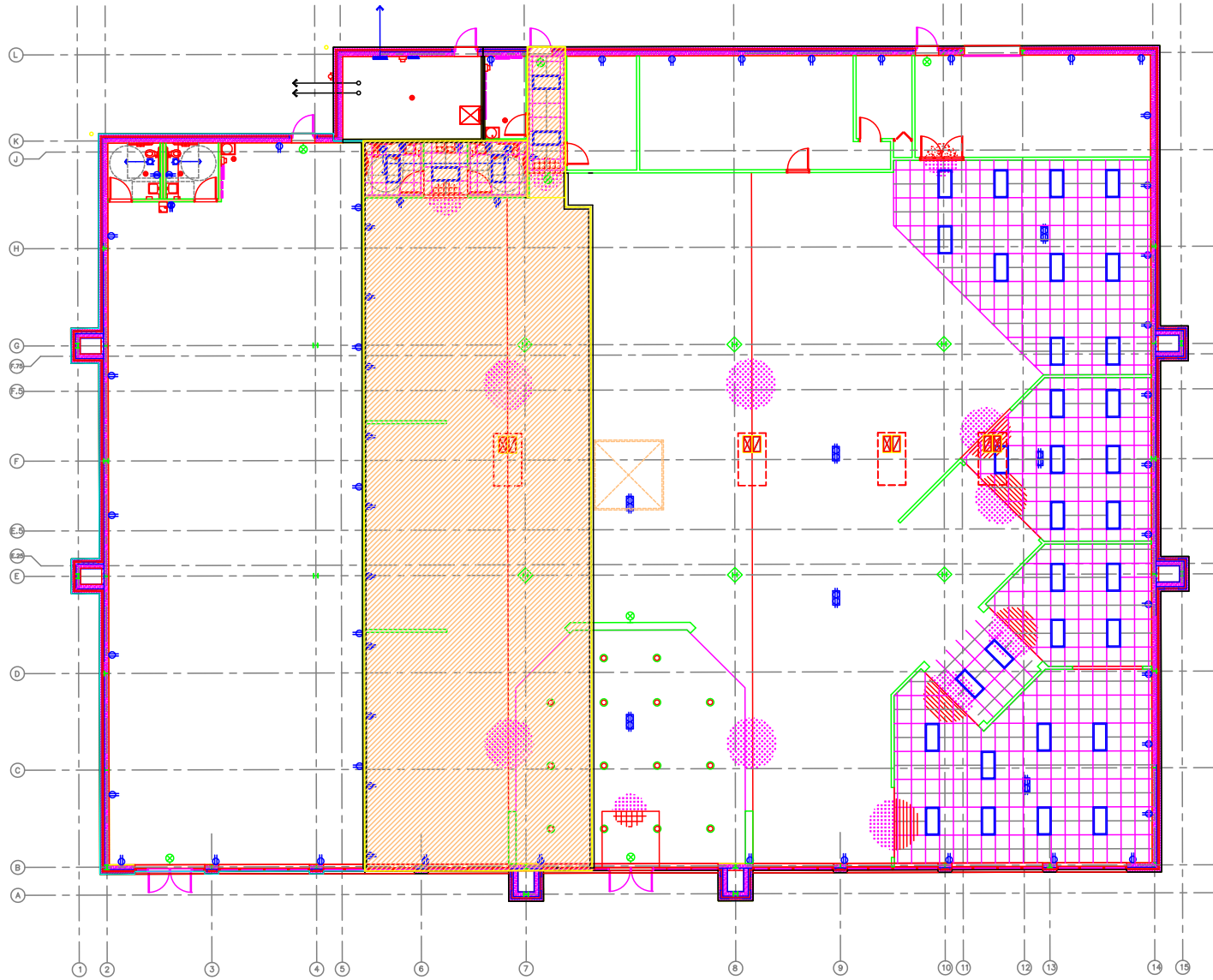
Demographics (2024)

	1 MILE	3 MILES	5 MILES
POPULATION	5,791	50,709	162,344
HOUSEHOLDS	2,344	20,827	65,316
AVG HOUSEHOLD INCOME	\$158,640	\$145,832	\$160,784
DAYTIME POPULATION	7,192	71,669	207,413

BLOOMFIELD TOWN SQUARE



BLOOMFIELD TOWN SQUARE



BLOOMFIELD TOWN SQUARE



AERIAL

BLOOMFIELD TOWN SQUARE



Jared
Gell

Mid-America Real Estate -
Michigan, Inc.
T: 248.855.6800
JGell@MidAmericaGrp.com

Brad
Rosenberg

Mid-America Real Estate -
Michigan, Inc.
T: 248.855.6800
BRosenberg@MidAmericaGrp.com



38500 Woodward Ave, Suite 100
Bloomfield Hills, Michigan 48304
248.855.6800
MidAmericaGrp.com