



## LEASE RATE

\$25.00 - 29.00 SF/yr  
(\$8.95 psf NNN)



## PROPERTY SIZE

90,062 +/- SF



## YEAR BUILT / RENNOVATED

1953 & 1991 / 2022



## NUMBER OF UNITS AVAILABLE

Four



## UNIT SIZES AVAILABLE

1,500 to 3,550 +/- SF

**2606 FAIRFIELD AVENUE SOUTH  
ST. PETERSBURG, FL 33712**

# THE FACTORY ST PETE BUILDINGS 7 & 8

## Presented By:

**Joe Esposito**  
Managing Principal/Director  
727.435.8889  
esposito@axxoscre.com

**Melinda Kulpa**  
Sr. Agent/Dir. of Transaction Mgmt  
727.435.8885 x8885  
melinda@axxoscre.com

**AXXOS**  
475 Central Ave, Suite 400  
St Petersburg, FL 33701  
**AxxosCRE.com**

# TABLE OF CONTENTS

## TABLE OF CONTENTS

PROPERTY INFORMATION	3
PROPERTY SUMMARY	4
PROPERTY DESCRIPTION	5
LOCATION INFORMATION	6
REGIONAL MAP	7
LOCATION MAP & OVERVIEW	8
SITE PLANS	9
DEMOGRAPHICS	10
DEMOGRAPHICS MAP & REPORT	11

## CONFIDENTIALITY & DISCLAIMER

All materials and information received or derived from AXXOS its directors, officers, agents, advisors, affiliates and/or any third party sources are provided without representation or warranty as to completeness, veracity, or accuracy, condition of the property, compliance or lack of compliance with applicable governmental requirements, developability or suitability, financial performance of the property, projected financial performance of the property for any party's intended use or any and all other matters.

Neither AXXOS its directors, officers, agents, advisors, or affiliates makes any representation or warranty, express or implied, as to accuracy or completeness of the any materials or information provided, derived, or received. Materials and information from any source, whether written or verbal, that may be furnished for review are not a substitute for a party's active conduct of its own due diligence to determine these and other matters of significance to such party. AXXOS will not investigate or verify any such matters or conduct due diligence for a party unless otherwise agreed in writing.

EACH PARTY SHALL CONDUCT ITS OWN INDEPENDENT INVESTIGATION AND DUE DILIGENCE.

Any party contemplating or under contract or in escrow for a transaction is urged to verify all information and to conduct their own inspections and investigations including through appropriate third party independent professionals selected by such party. All financial data should be verified by the party including by obtaining and reading applicable documents and reports and consulting appropriate independent professionals. AXXOS makes no warranties and/or representations regarding the veracity, completeness, or relevance of any financial data or assumptions. AXXOS does not serve as a financial advisor to any party regarding any proposed transaction. All data and assumptions regarding financial performance, including that used for financial modeling purposes, may differ from actual data or performance. Any estimates of market rents and/or projected rents that may be provided to a party do not necessarily mean that rents can be established at or increased to that level. Parties must evaluate any applicable contractual and governmental limitations as well as market conditions, vacancy factors and other issues in order to determine rents from or for the property.

Legal questions should be discussed by the party with an attorney. Tax questions should be discussed by the party with a certified public accountant or tax attorney. Title questions should be discussed by the party with a title officer or attorney. Questions regarding the condition of the property and whether the property complies with applicable governmental requirements should be discussed by the party with appropriate engineers, architects, contractors, other consultants and governmental agencies. All properties and services are marketed by AXXOS in compliance with all applicable fair housing and equal opportunity laws.

# PROPERTY INFORMATION



# PROPERTY SUMMARY



## OFFERING SUMMARY

Lease Rate:	\$25.00 - 29.00 SF/yr (\$8.95 psf NNN)
Available SF:	1,500 - 3,550 +/- SF
Lot Size:	4.75 +/- Acres
Building Size:	90,062 +/- SF

SPACES	LEASE RATE	SPACE SIZE
Building 5 Cafe	\$29.00 SF/yr	1,420 SF
Building 7, Unit A & Private Outdoor Space	\$28.00 SF/yr	1,500 - 3,550 SF
Building 7, Unit B	\$25.00 SF/yr	2,050 - 3,550 SF
Building 8, Unit B	\$25.00 SF/yr	2,853 SF

## PROPERTY DETAILS

Property Name:	The Factory St Pete Buildings 7&8
Property Type:	Industrial Flex
Property Sub-Type:	Retail/Office/Flex/Studio/Restaurant
APN:	23-31-16-17460-000-0110
Year Built:	1953 & 1991
Year Renovated:	2025
Construction Status:	Existing
Zoning:	Industrial Traditional (IT)
Clear Height:	15' to 18'
Construction:	Concrete Masonry

# PROPERTY DESCRIPTION



## PROPERTY DESCRIPTION

Unleash Your Creative Spark at The Factory:  
Limited Space Available!

Immerse yourself in St. Petersburg's vibrant arts warehouse district at The Factory! This dynamic mixed-use facility offers a unique opportunity to be a part of a thriving creative community.

The Factory transcends square footage. It's a full-fledged creative experience. Imagine your brand coming alive on the vibrant Pinellas Trail, with over 1,000 feet of frontage connecting you to a community of active lifestyle enthusiasts and potential customers. Here, inspiration ignites as you collaborate and network with a captivating mix of artists, galleries, restaurants, and event spaces. The Factory empowers you to host unforgettable experiences in stunning indoor and outdoor event spaces – perfect for festivals, art shows, and leaving a lasting impression.

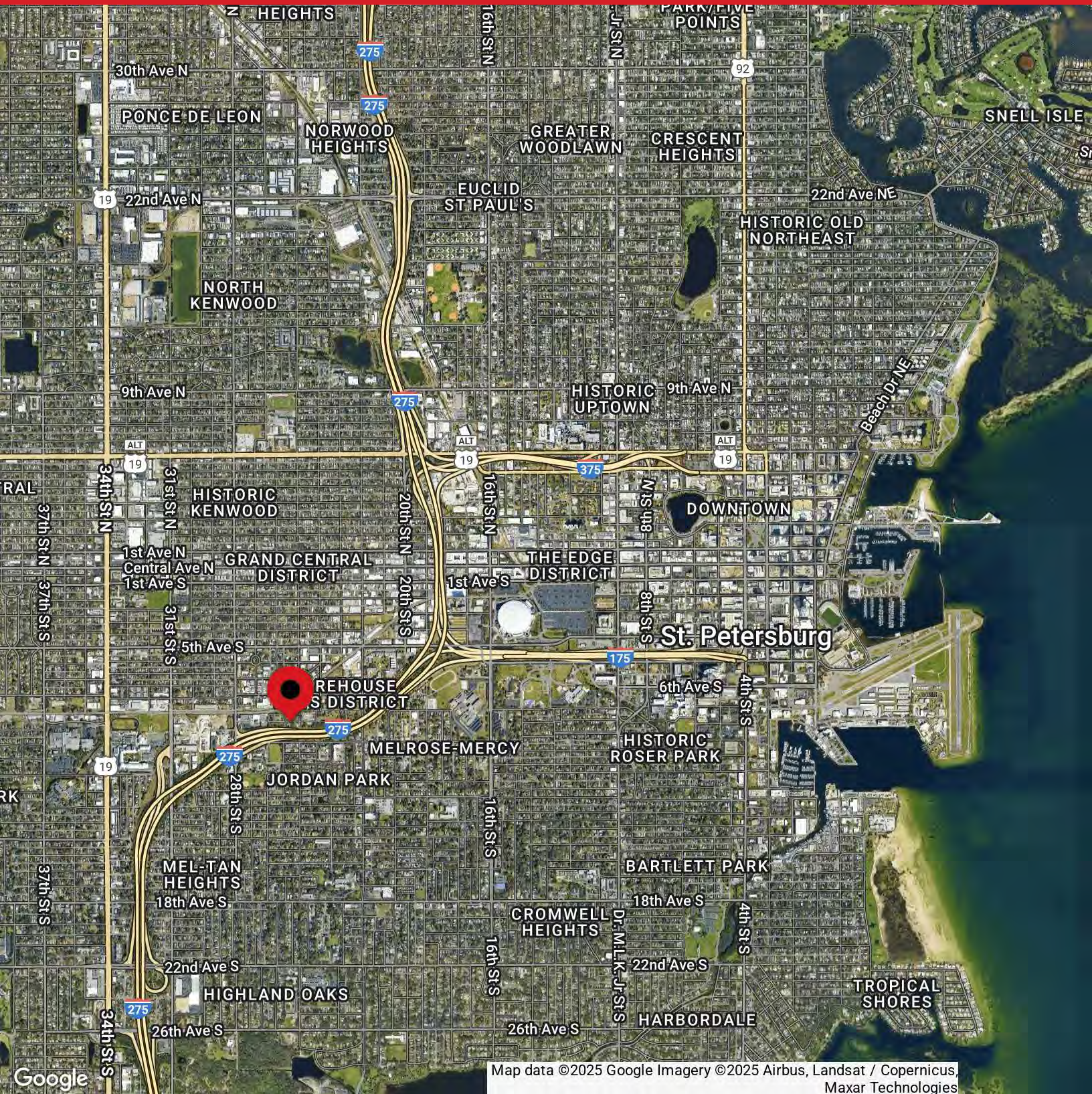
The Factory is more than a place, it's a canvas. Become part of the art! We're seeking bar/restaurants, retailers, indoor entertainment, fitness, offices, galleries, studios, and more to join our vibrant community.

Limited space available – Inquire today and don't miss your chance to be a part of something extraordinary!

## LOCATION INFORMATION



# REGIONAL MAP



# LOCATION MAP & OVERVIEW



## LOCATION DESCRIPTION

Uncage Your Creativity at The Factory St. Pete: Where Industrial Chic Meets Buzzing Arts District.

Imagine your business thriving in the heart of St. Petersburg's electrifying Warehouse Arts District. The Factory St. Pete places you at the epicenter of this burgeoning creative hub, where historic warehouses are reborn as artist studios, craft breweries, delectable restaurants, and innovative workshops.

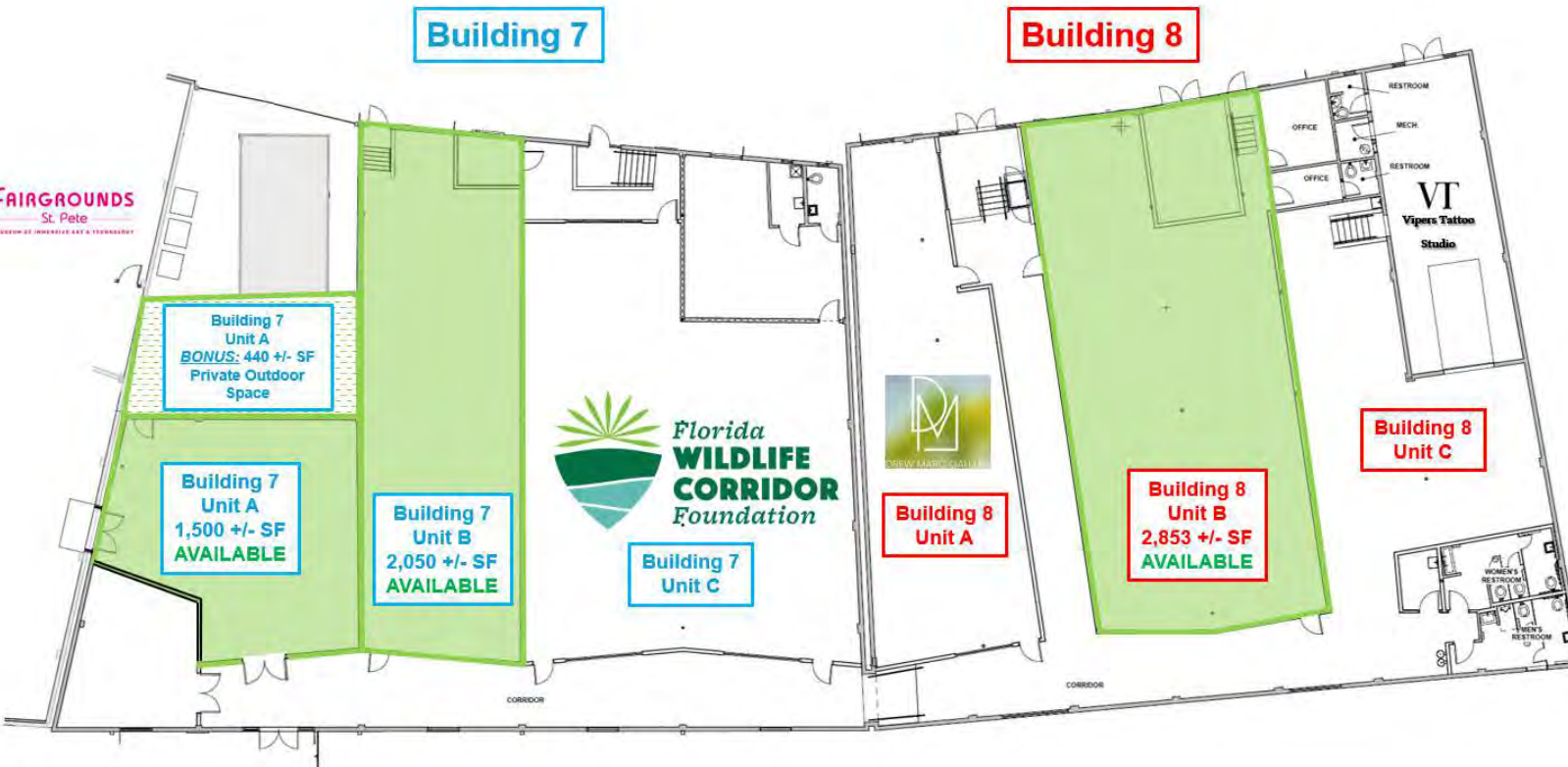
Fuel your inspiration with the energy of a thriving community. Your clients will enjoy mingling with established artists in the many surrounding galleries and studios, sip on award-winning spirits at St. Petersburg Distillery next door, or unwind with a craft beer at 3 Daughters Brewing – all within a stone's throw.

Location is everything, and The Factory St. Pete boasts the best. Nestled south of the dynamic Grand Central District, you'll enjoy prime frontage along the famed Pinellas Trail. This scenic paved pathway connects a network of parks, cafes, and cultural attractions at your doorstep, all accessible by bike or foot.

But the buzz doesn't stop there. The Factory St. Pete offers immediate access to I-275, making commutes and deliveries a breeze. Popular dining destinations like Casita Taqueria, Wild Child, and Urban Stillhouse are just steps away, and the entirety of downtown St. Petersburg, the scenic bay, and the beautiful beaches are all within easy reach.

This is more than just a location; it's an opportunity to be part of something special. The Factory St. Pete puts you at the forefront of St. Petersburg's creative renaissance. Join a vibrant community and unleash your entrepreneurial spirit in a space that ignites your passion.

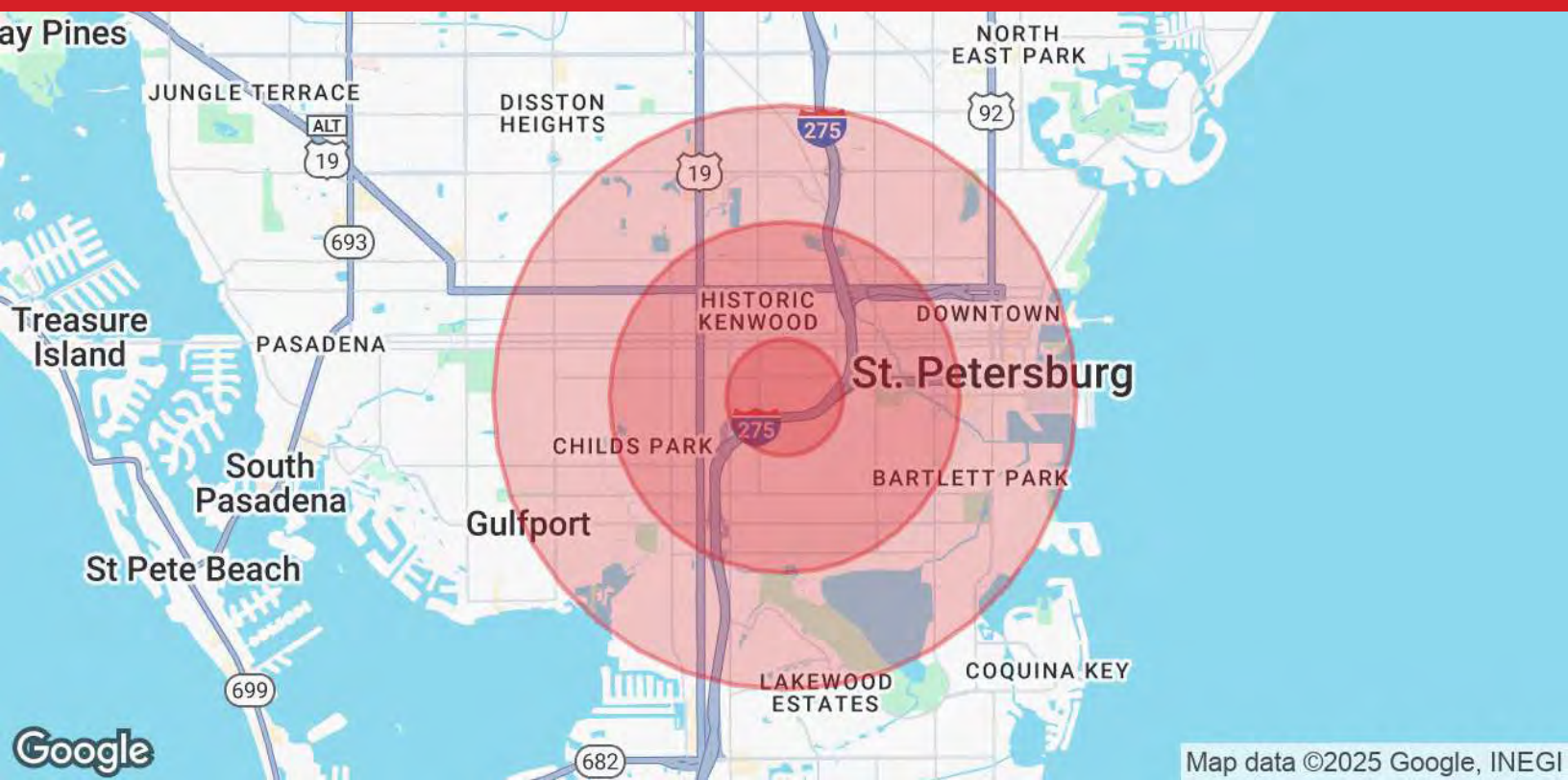
# SITE PLANS



# DEMOGRAPHICS



# DEMOGRAPHICS MAP & REPORT



POPULATION	0.5 MILES	1.5 MILES	2.5 MILES
Total Population	2,964	33,653	94,392
Average Age	36	41	43
Average Age (Male)	35	40	43
Average Age (Female)	37	42	44

HOUSEHOLDS & INCOME	0.5 MILES	1.5 MILES	2.5 MILES
Total Households	1,115	14,805	44,352
# of Persons per HH	2.7	2.3	2.1
Average HH Income	\$66,706	\$75,990	\$87,714
Average House Value	\$334,364	\$324,585	\$412,099

Demographics data derived from AlphaMap