

FOR SALE



222 W B Street | Rainier OR 97048



Paul Young
Windermere Northwest Living

paulyoung@windermere.com
360-560-3165
paulyoung.withwre.com



Shelby Peterson
Windermere Northwest Living

shelbypeterson@windermere.com
360-846-3559
shelbypeterson.withwre.com

[ADDITIONAL PHOTOS](#)



PROPERTY FEATURES

- High visibility 2,544 SF commercial building available for sale in Rainier, OR
- Located directly across Grocery Outlet and Dollar General Visible to over 10,000 VPD along Hwy 30
- With a retail/showroom/office area in the front and a 3-bay garage in the rear, the building lends itself to a variety of uses.
- The Central Business District (CBD) zone allows for retail, restaurants and office use (Chapter 18.69 CENTRAL BUSINESS DISTRICT ZONE (CBD))
- Some automotive and light industrial uses allowed with certain restrictions or via a Conditional Use Permit (CUP).
- Current tenant on a month-to-month basis but would be interested in negotiating a longer-term lease.
- Offered for sale for \$450,000

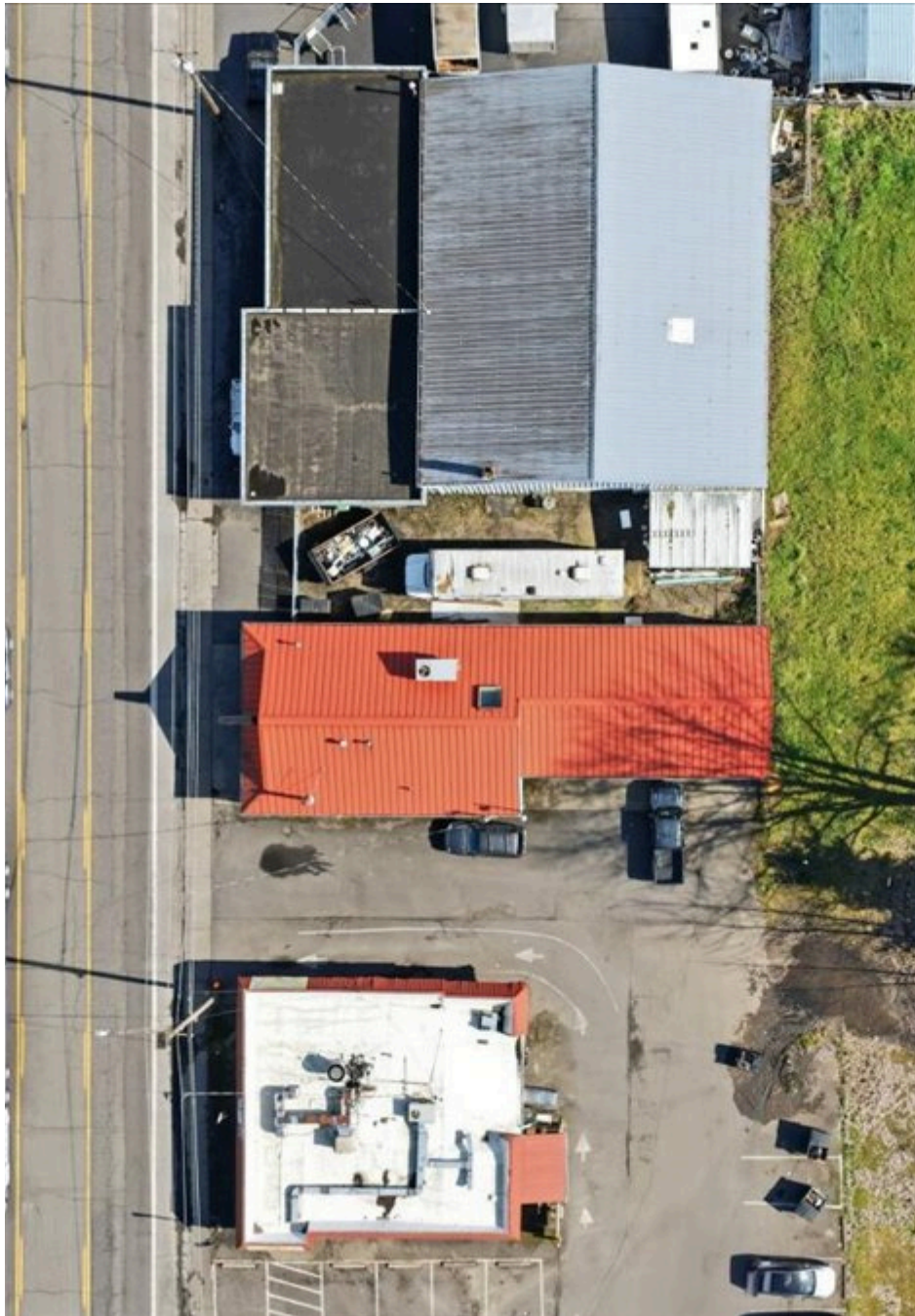
SEIKO EPSON PROPERTY – MINT FARM

222 W B Street | Rainier OR 97048



SEIKO EPSON PROPERTY – MINT FARM

222 W B Street | Rainier OR 97048

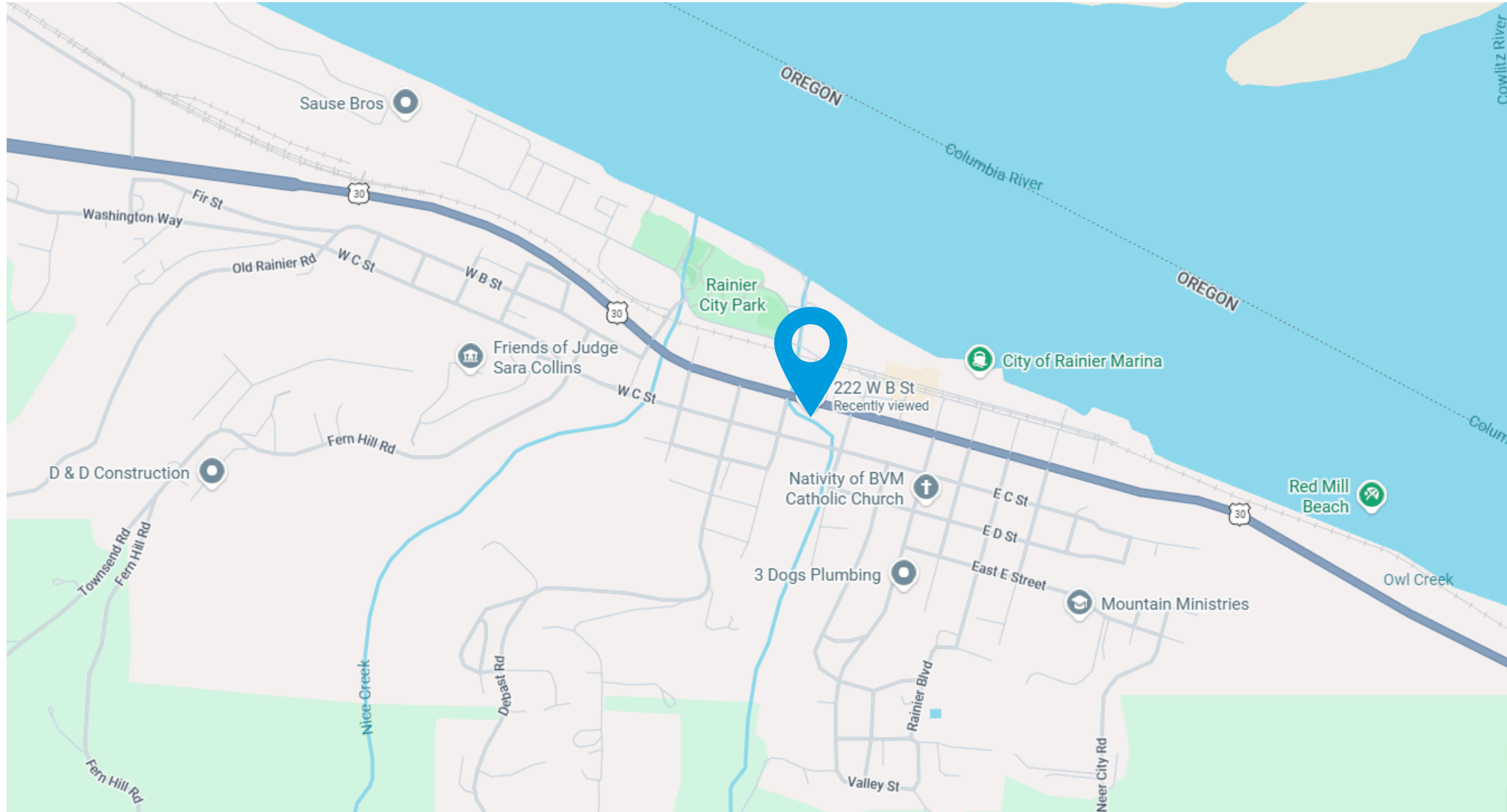




Paul Young
WINDERMERE NORTHWEST LIVING
(360) 560-3165
paulyoung@windermere.com
paulyoung.withwre.com



Shelby Peterson
WINDERMERE NORTHWEST LIVING
(360) 846-3559
shelbypeterson@windermere.com
shelbypeterson.withwre.com



HIGH VISIBILITY IN RAINIER OR

High-visibility 2,544 SF commercial building for sale in Rainier, OR, located directly across from Grocery Outlet and Dollar General with exposure to over 10,000 vehicles per day along Hwy 30.