

1818 N. Meade Street Appleton, Wisconsin



1818 N. Meade Street, West Building

FOR LEASE

highlights

Type	Medical Office
Building Size	35,802 SF, 3 Stories
Parking	Surface Parking

- ⇒ On the campus of ThedaCare Regional Medical Center-Appleton
- ⇒ Balanced mix of healthcare specialties
- ⇒ Located at N. Meade Street and Glendale Avenue
- ⇒ Ample patient and physician parking
- ⇒ Competitive Lease Package

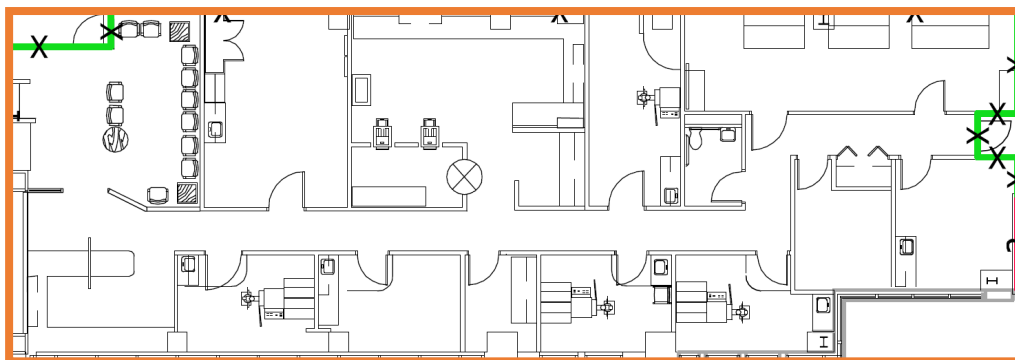
Tracy Spieth, CPM®
General Manager
920.735.7629 Office
tracy.spieth@lillibridge.com


LILLIBRIDGE®
A VENTAS COMPANY

1818 N. Meade Street
Appleton, Wisconsin

For Lease

Available Space



Suite	Size	Details
340	3,187	Available Now

Tracy Spieth, CPM®
General Manager
920.735.7629 Office
tracy.spieth@lillibridge.com

