

SUMMARY

FLOOR PLAN

PHOTOS

LOCATION

FOR LEASE

PROPERTY OVERVIEW

Two-story Hillcrest Center building is located at 1110 Hillcrest Road in the Hillcrest Road area. The office building is brick style and features portico-style entrance with lush landscaping surrounding, ample parking, and on-site management.

AVAILABLE

- Suite 1C: 800 ± SF

LEASE RATE

- \$16.88 PSF Annually / \$1,125.00 Monthly ; Modified Gross

PROPERTY DETAILS

- GLA: 15,000 ± SF
- Zoning: B-2 Commercial
- Main Entrance: located at north side of building
- Parking: ample shared parking with adjoining 1120 Hillcrest Road
- Ingress/Egress: property has 2 curb cuts to Hillcrest Road and left hand turn out
- Signage: pylon interior directory board (subject to availability), and placard identification at door of each space

2022 DEMOGRAPHICS

	3 MI	5 MI	10 MI
Population	69,865	139,544	311,243
Avg. HH Income	\$71,933	\$74,905	\$67,591
Households	30,004	57,763	124,640



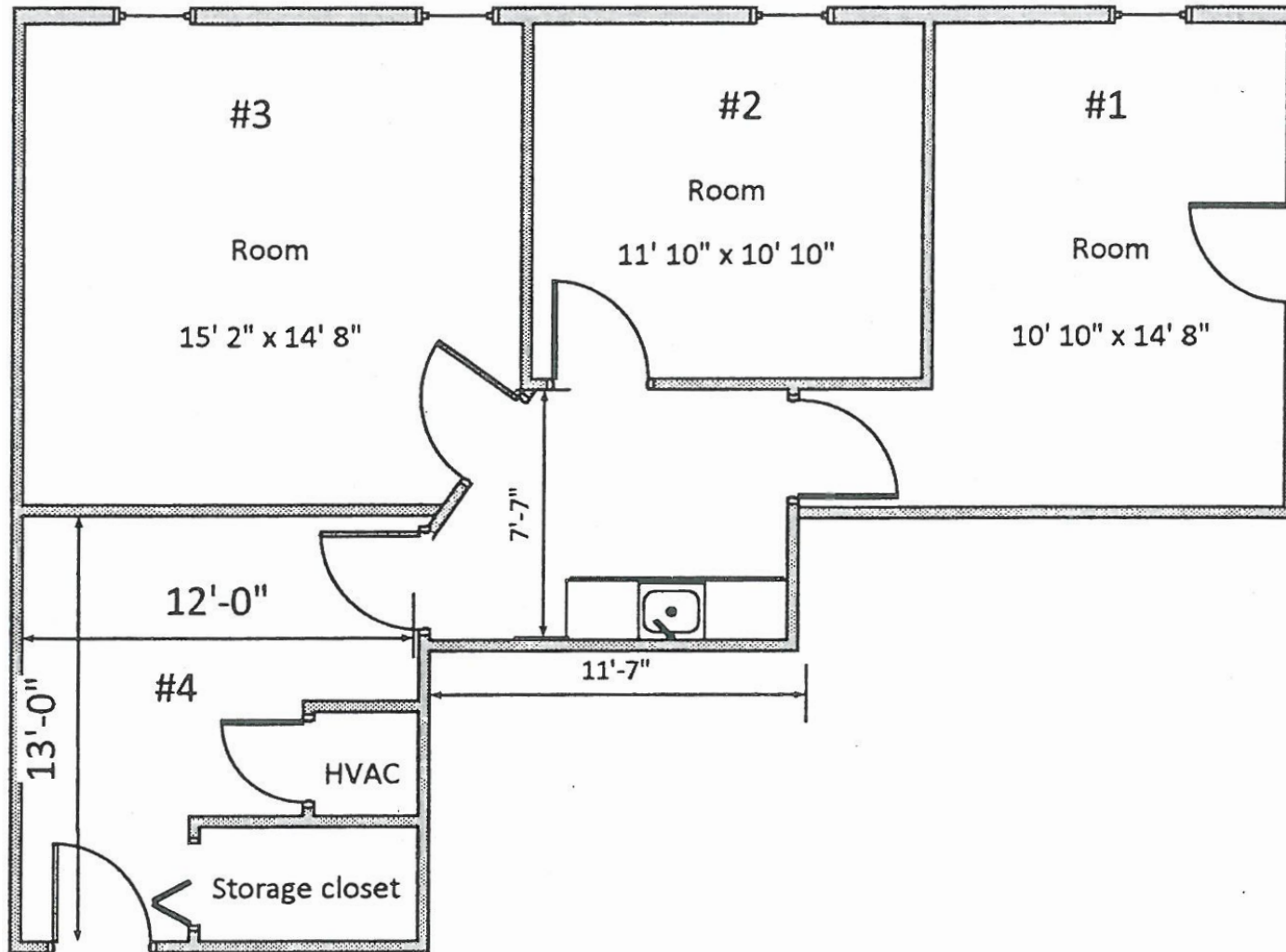
SUMMARY

FLOOR PLAN

PHOTOS

LOCATION

Click image for larger view



SUMMARY

FLOOR PLAN

PHOTOS

LOCATION



SUMMARY

FLOOR PLAN

PHOTOS

LOCATION

