

**LEASE | OFFICE**

## Hamline Park Plaza

570 Asbury Street, St. Paul, Minnesota 55104



### Property Features

- Single private offices available with wifi
- 37,642 square foot office building
- Three story office complex
- Free covered parking in adjacent ramp connected by skyway
- 327 parking spaces (8.69/1,000 SF)
- Heated underground parking available
- Just steps from both Green Line LRT and A Line BRT
- Fully sprinklered
- Easy access to I-94, Minneapolis CBD and St. Paul CBD
- Many retail amenities nearby
- Exterior signage available
- Common building conference room and training center
- Building hours: Monday - Friday 7:00 am - 5:30 pm  
Saturday - 8:00 am - 3:00 pm  
Sunday - closed

(Times may be adjusted if needed.)

### Contact Us

**ERIC DUEHOLM**

Partner



651.621.2550

[eric@terracegroupllc.com](mailto:eric@terracegroupllc.com)

**BEN BRUNO**

Brokerage Services



651.621.2563

[ben@terracegroupllc.com](mailto:ben@terracegroupllc.com)

**TONY ROSSATO**

Brokerage Services



651.621.2507

[tony@terracegroupllc.com](mailto:tony@terracegroupllc.com)

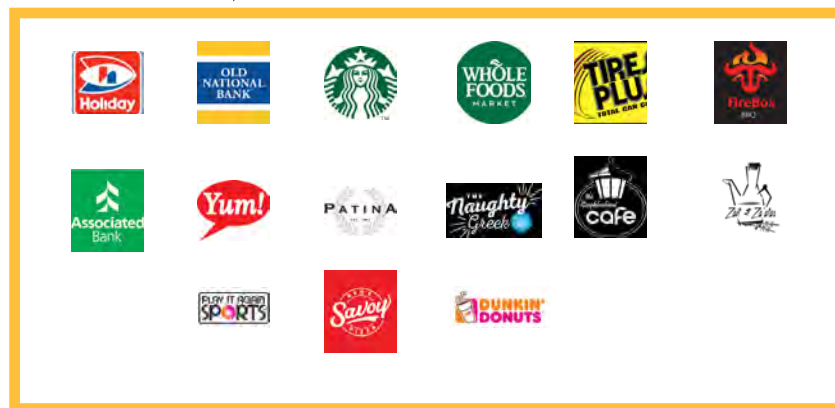
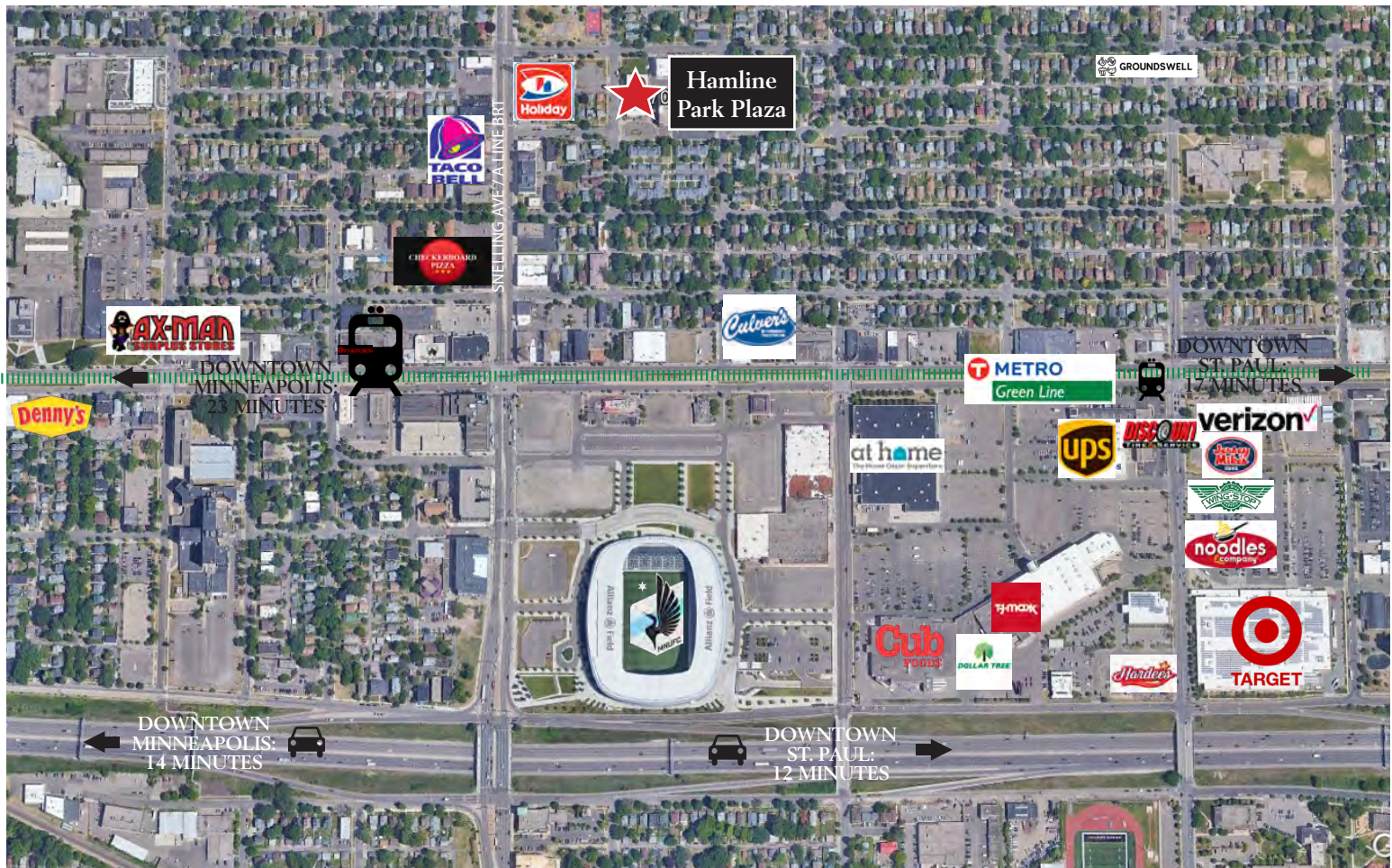
**Full Property Information at:**  
**[hamlinepp.com](http://hamlinepp.com)**



**LEASE | OFFICE**  
**Hamline Park Plaza**  
 570 Asbury Street, St. Paul, Minnesota 55104



## Area Map



**ERIC DUEHOLM**  
 Partner  
 651.621.2550  
[eric@terracegrouppllc.com](mailto:eric@terracegrouppllc.com)

**BEN BRUNO**  
 Brokerage Services  
 651.621.2563  
[ben@terracegrouppllc.com](mailto:ben@terracegrouppllc.com)

**TONY ROSSATO**  
 Brokerage Services  
 651.621.2507  
[tony@terracegrouppllc.com](mailto:tony@terracegrouppllc.com)

**Full Property Information at:**  
[hamlinepp.com](http://hamlinepp.com)



**LEASE | OFFICE**  
**Hamline Park Plaza**  
570 Asbury Street, St. Paul, Minnesota 55104



**ERIC DUEHOLM**  
Partner  
651.621.2550  
[eric@terracegrouppllc.com](mailto:eric@terracegrouppllc.com)

**BEN BRUNO**  
Brokerage Services  
651.621.2563  
[ben@terracegrouppllc.com](mailto:ben@terracegrouppllc.com)

**TONY ROSSATO**  
Brokerage Services  
651.621.2507  
[tony@terracegrouppllc.com](mailto:tony@terracegrouppllc.com)

**Full Property Information at:**  
**[hamlinepp.com](http://hamlinepp.com)**



**LEASE | OFFICE**

**Hamline Park Plaza**

570 Asbury Street, St. Paul, Minnesota 55104



## SUITE 201

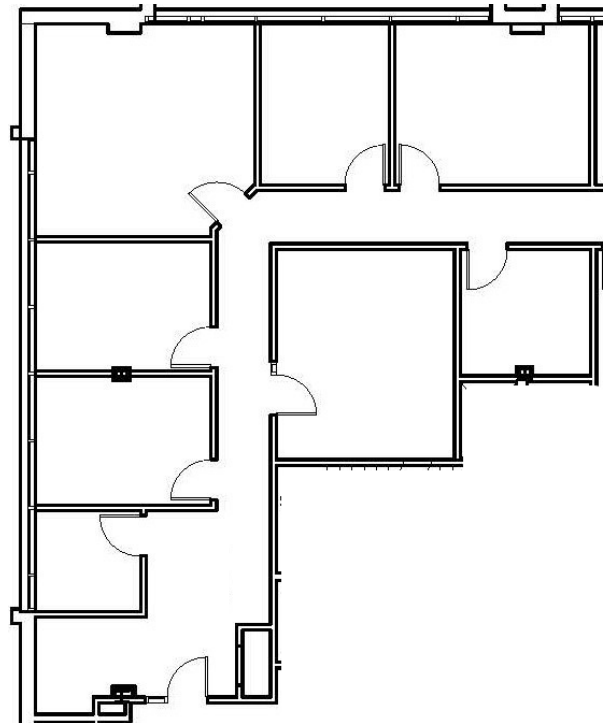
2,039 square feet

6 private offices with large windows

Kitchenette

Waiting area

\$4,860 initial estimated monthly rent



**ERIC DUEHOLM**

Partner

651.621.2550

[eric@terracegroupllc.com](mailto:eric@terracegroupllc.com)

**BEN BRUNO**

Brokerage Services

651.621.2563

[ben@terracegroupllc.com](mailto:ben@terracegroupllc.com)

**TONY ROSSATO**

Brokerage Services

651.621.2507

[tony@terracegroupllc.com](mailto:tony@terracegroupllc.com)

**Full Property Information at:**  
**[hamlinepp.com](http://hamlinepp.com)**

**LEASE | OFFICE**

**Hamline Park Plaza**

570 Asbury Street, St. Paul, Minnesota 55104



## AVAILABLE OFFICES

Available WiFi

Shared waiting area

Conference room

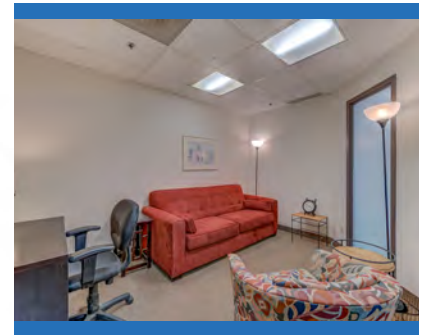


### Training Center



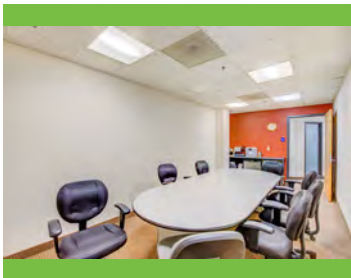
\$30 / hour for tenants - Reservations required

### Waiting Room



### Conference Room

Free for tenants - Reservations required



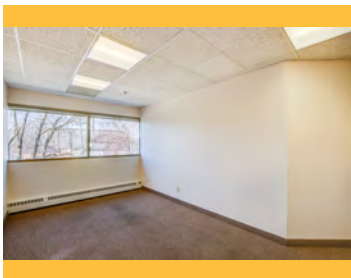
### 205D

\$650 / month

### 205B

\$850 / month

~10' x 16'



**ERIC DUEHOLM**

Partner

651.621.2550

[eric@terracegroupllc.com](mailto:eric@terracegroupllc.com)

**BEN BRUNO**

Brokerage Services

651.621.2563

[ben@terracegroupllc.com](mailto:ben@terracegroupllc.com)

**TONY ROSSATO**

Brokerage Services

651.621.2507

[tony@terracegroupllc.com](mailto:tony@terracegroupllc.com)

**Full Property Information at:**  
**[hamlinepp.com](http://hamlinepp.com)**

**LEASE | OFFICE**

**Hamline Park Plaza**

570 Asbury Street, St. Paul, Minnesota 55104



## SUITES 302 & 304



### SUITE 302

583 sf total

\$1,215 initial estimated monthly rent

### SUITE 304

1,495 sf total

\$3,115 initial estimated monthly rent

### SUITES 302 & 304 COMBINED

2,078 sf total

\$4,330 initial estimated monthly rent

**ERIC DUEHOLM**

Partner

651.621.2550

[eric@terracegrouppllc.com](mailto:eric@terracegrouppllc.com)

**BEN BRUNO**

Brokerage Services

651.621.2563

[ben@terracegrouppllc.com](mailto:ben@terracegrouppllc.com)

**TONY ROSSATO**

Brokerage Services

651.621.2507

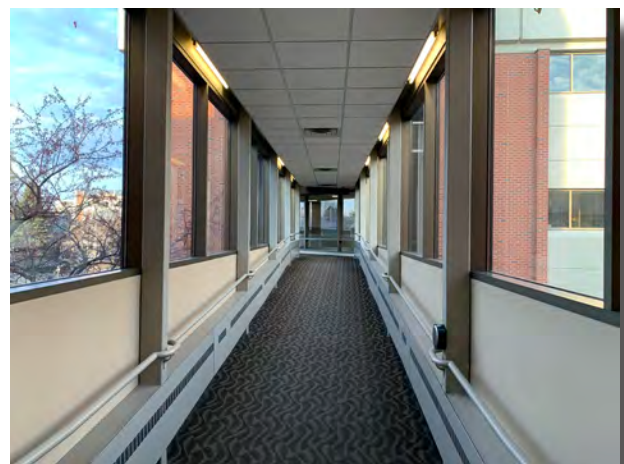
[tony@terracegrouppllc.com](mailto:tony@terracegrouppllc.com)

**Full Property Information at:**  
**[hamlinepp.com](http://hamlinepp.com)**



## Parking Ramp

- Free covered parking in adjacent ramp connected by skyway
- 327 parking spaces (8.69/1,000)
- Heated underground parking available for lease



*Information is deemed reliable; however, no warranty or representation is made as to its accuracy or completeness. Property is subject to price change, prior sale or lease, and withdrawal from the market, all without notice.*

**ERIC DUEHOLM**  
Partner

651.621.2550  
eric@terracegroupllc.com

**BEN BRUNO**  
Brokerage Services

651.621.2563  
ben@terracegroupllc.com

**TONY ROSSATO**  
Brokerage Services

651.621.2507  
tony@terracegroupllc.com

**Full Property Information at:**  
**hamlinepp.com**