



**FOR  
LEASE**

## **MORDECAI OFFICE SUITES**

**1301 WAKE FOREST RD | RALEIGH, NC 27604**

**SMALL OFFICE SPACES  
CONVENIENT LOCATION**

**LISTING BROKER:**

**KHARMIKA ALSTON, CCIM**

**919.645.1431 (D) | 919.672.4905 (M)**

**KALSTON@TRADEMARKPROPERTIES.COM**

**1301 WAKE FOREST ROAD  
RALEIGH, NC 27604**

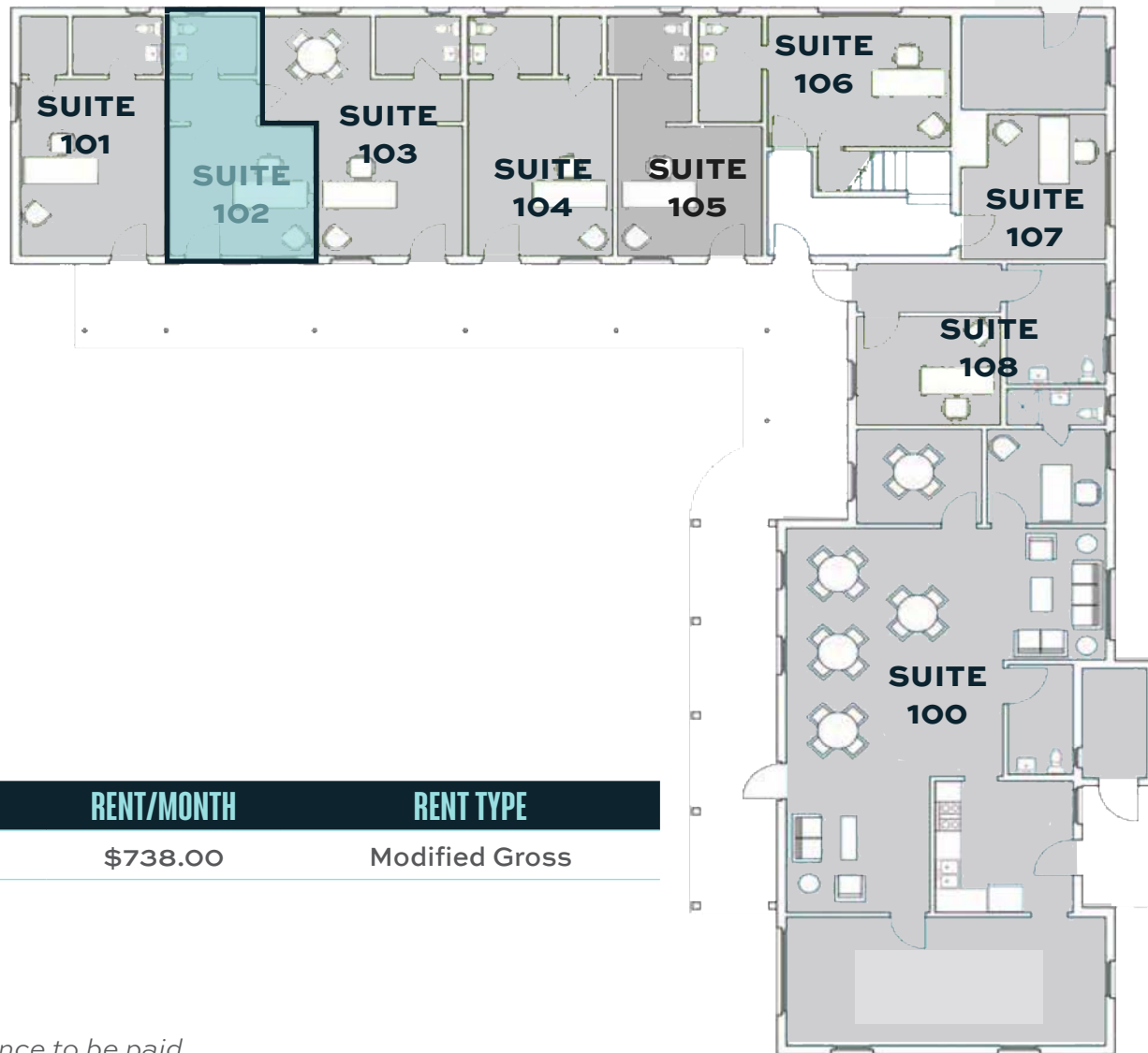
## PROPERTY HIGHLIGHTS

- » Vaulted ceilings upstairs
- » Wi-Fi included
- » Windows in every office
- » Pet friendly
- » Walking distance to restaurants and retail
- » 1.4/1,000 parking ratio, available street parking
- » Situated in Oak City's founding neighborhood, Mordecai, the office suites are in walking distance to Downtown Raleigh
- » Near Mordecai Historic Park, Seaboard Station and a variety of retail establishments including Krispy Kreme, The Station, Person Street Bar, and Stanbury



1301 WAKE FOREST ROAD  
RALEIGH, NC 27604

# FIRST FLOOR



## AVAILABILITY

SUITE	SIZE	RENT/MONTH	RENT TYPE
102	229 SF	\$738.00	Modified Gross

*\*Share of taxes and insurance to be paid*

KHARMIKA ALSTON, CCIM  
919.645.1431 DIRECT | 919.672.4905 MOBILE  
KALSTON@TRADEMARKPROPERTIES.COM

1001 WADE AVENUE SUITE 300  
RALEIGH, NC 27605  
TRADEMARKPROPERTIES.COM | 919-782-5552

1301 WAKE FOREST ROAD  
RALEIGH, NC 27604

## SUITE 102 PHOTOS

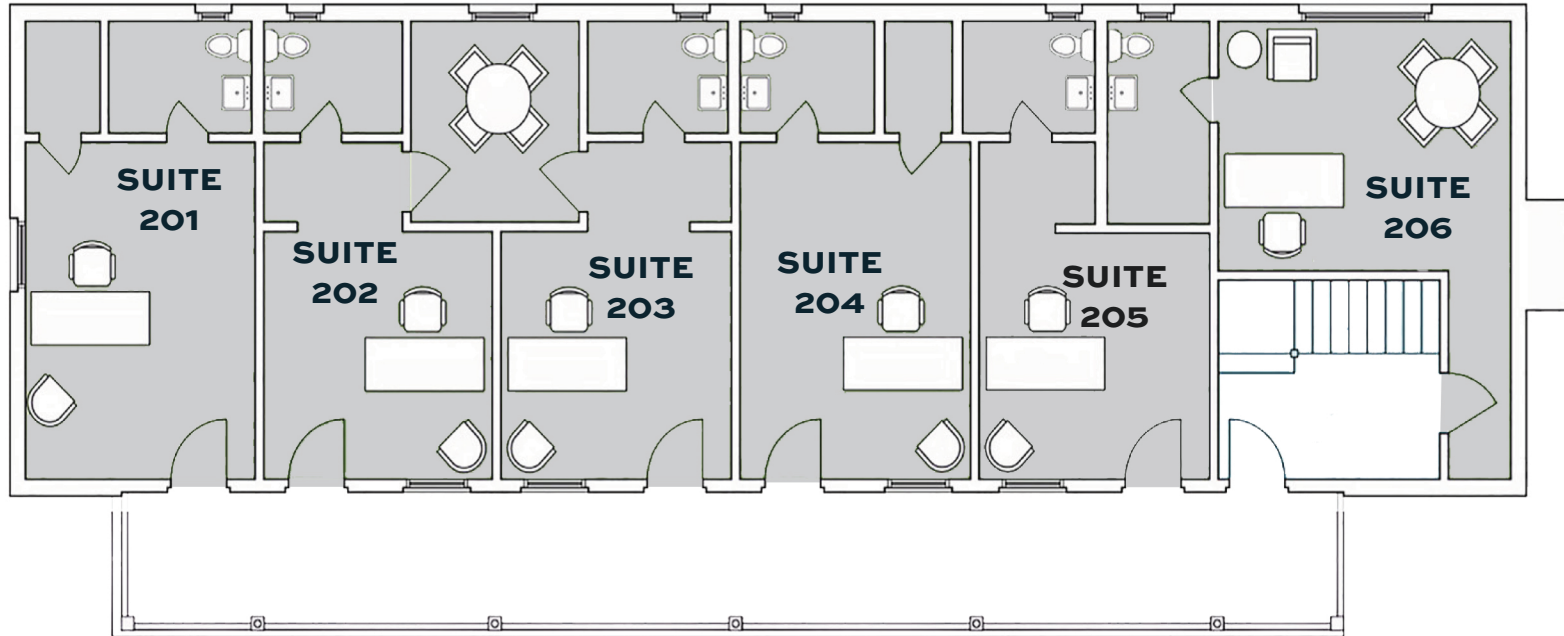


KHARMIKA ALSTON, CCIM  
919.645.1431 DIRECT | 919.672.4905 MOBILE  
KALSTON@TRADEMARKPROPERTIES.COM

1001 WADE AVENUE SUITE 300  
RALEIGH, NC 27605  
TRADEMARKPROPERTIES.COM | 919-782-5552

1301 WAKE FOREST ROAD  
RALEIGH, NC 27604

## SECOND FLOOR



KHARMIKA ALSTON, CCIM  
919.645.1431 DIRECT | 919.672.4905 MOBILE  
KALSTON@TRADEMARKPROPERTIES.COM

1001 WADE AVENUE SUITE 300  
RALEIGH, NC 27605  
TRADEMARKPROPERTIES.COM | 919-782-5552

1301 WAKE FOREST ROAD  
RALEIGH, NC 27604

## LOCATION MAP



LISTING BROKER:

**KHARMIKA ALSTON, CCIM**

919.645.1431 DIRECT | 919.672.4905 MOBILE  
KALSTON@TRADEMARKPROPERTIES.COM



**TRADEMARK**  
PROPERTIES

**THIS IS OUR TRADEMARK**

THE INFORMATION CONTAINED HEREIN WAS OBTAINED FROM SOURCES BELIEVED RELIABLE; HOWEVER, TRADEMARK PROPERTIES MAKES NO GUARANTEES, WARRANTIES, OR REPRESENTATIONS AS TO THE COMPLETENESS OR ACCURACY THEREOF. THE PRESENTATION OF THIS PROPERTY IS SUBMITTED SUBJECT TO ERRORS, OMISSIONS, CHANGES OF PRICE OR CONDITIONS PRIOR TO SALE OR LEASE, OR WITHDRAWAL WITHOUT NOTICE.