



Office
For Lease

Matt Delisle

Senior Associate
+1 952 837 3029
matt.delisle@colliers.com

1600 Utica Avenue South, Suite 300
St. Louis Park, MN 55416
P: +1 952 897 7700
colliers.com

10405 6th Avenue North Plymouth, MN

Office Space for Lease at 55 West

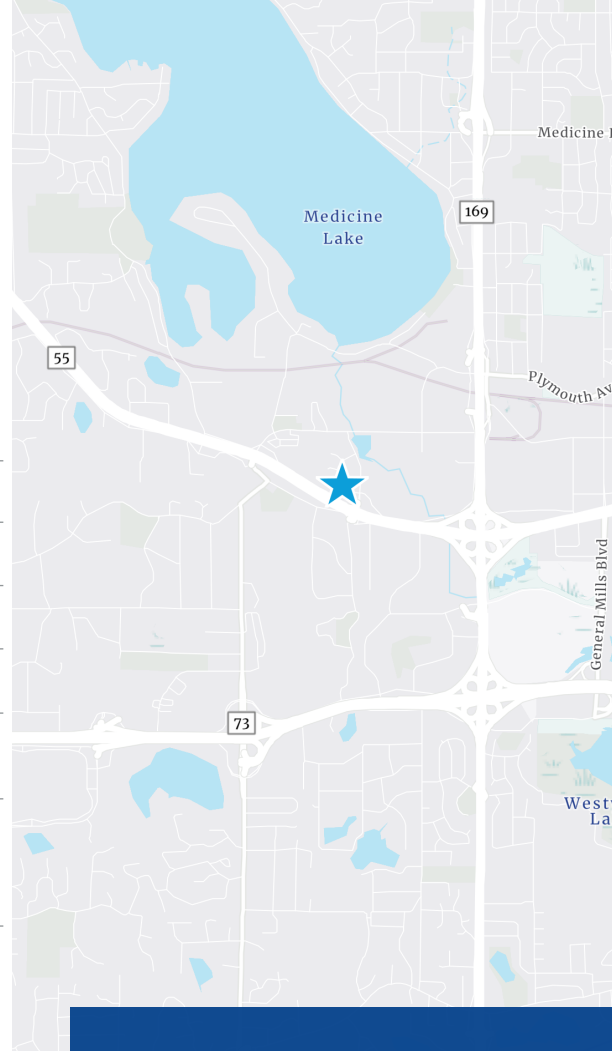
- Prime location for professional image
- Up to 17,593 RSF Available
- Exterior building signage available
- Ample surface parking available
- Easy access to Highway 55 and Highway 169
- Well-maintained property with woodland and pond views

Copyright © 2021 Colliers International. Information herein has been obtained from sources deemed reliable, however its accuracy cannot be guaranteed. The user is required to conduct their own due diligence and verification.

For Lease

Property Highlights

Building Address:	10405 6th Avenue North Plymouth, MN 55441
Currently Available:	Up to 17,593 RSF
Year Built:	1990
Parking:	Ample surface
Rental Rates:	\$15.00 PSF
2024 Est Tax & Ops:	\$13.81 PSF
Available Suites:	Suite 115: 2,773 Suite 200: 4,000 - 9,197 SF Suite 250: 6,538 SF

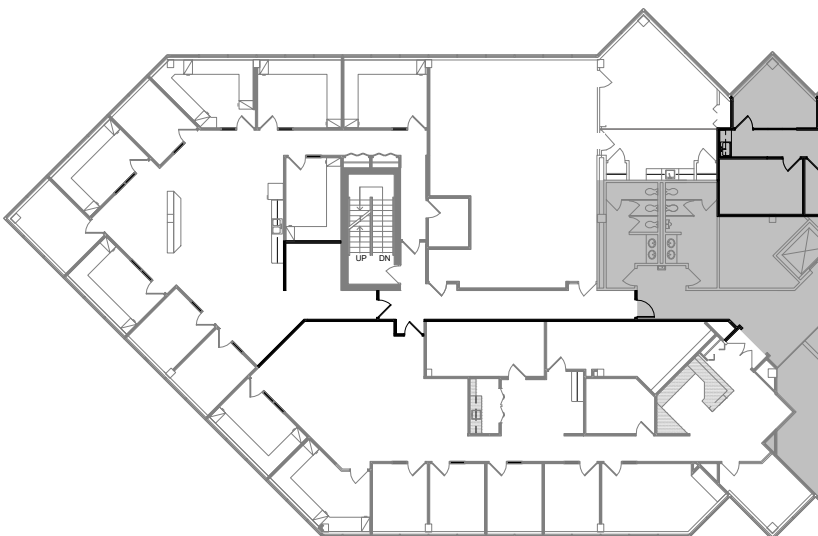


Building Amenities

- Key card access
- Views of neighboring wetland and woodland
- Convenient access to Waterford Park Plaza shopping center and restaurants

Floor Plan

Suite 200 | 9,197 RSF



Contact us:

Matt Delisle

Senior Associate
+1 952 837 3029
matt.delisle@colliers.com

Colliers

1600 Utica Avenue South, Suite 300
St. Louis Park, MN 55416
P: +1 952 897 7700