



CUSHMAN &  
WAKEFIELD

# 700 WALNUT

CINCINNATI





In Cincinnati's Backstage District and next to the Aronoff Center, shopping, dining and entertainment.

Amid Cincinnati's revitalization, **700 WALNUT** offers great company and exceptional office space.

### PROPERTY HIGHLIGHTS



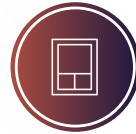
**Size**  
86,750 SF



**Ceiling Height**  
9' Finished



**Floor Space**  
2<sup>nd</sup> through 6<sup>th</sup>  
floors office space



**Windows**  
Operable



**Elevators**  
3 Passenger  
1 Freight

### TENANT AMENITIES

**1<sup>st</sup> Floor**

- The Lempicka
- First Watch
- Bortz Jewelers

**5<sup>th</sup> Floor**

Private Fitness Center

**Asking Rate**

\$18.00 /SF Gross







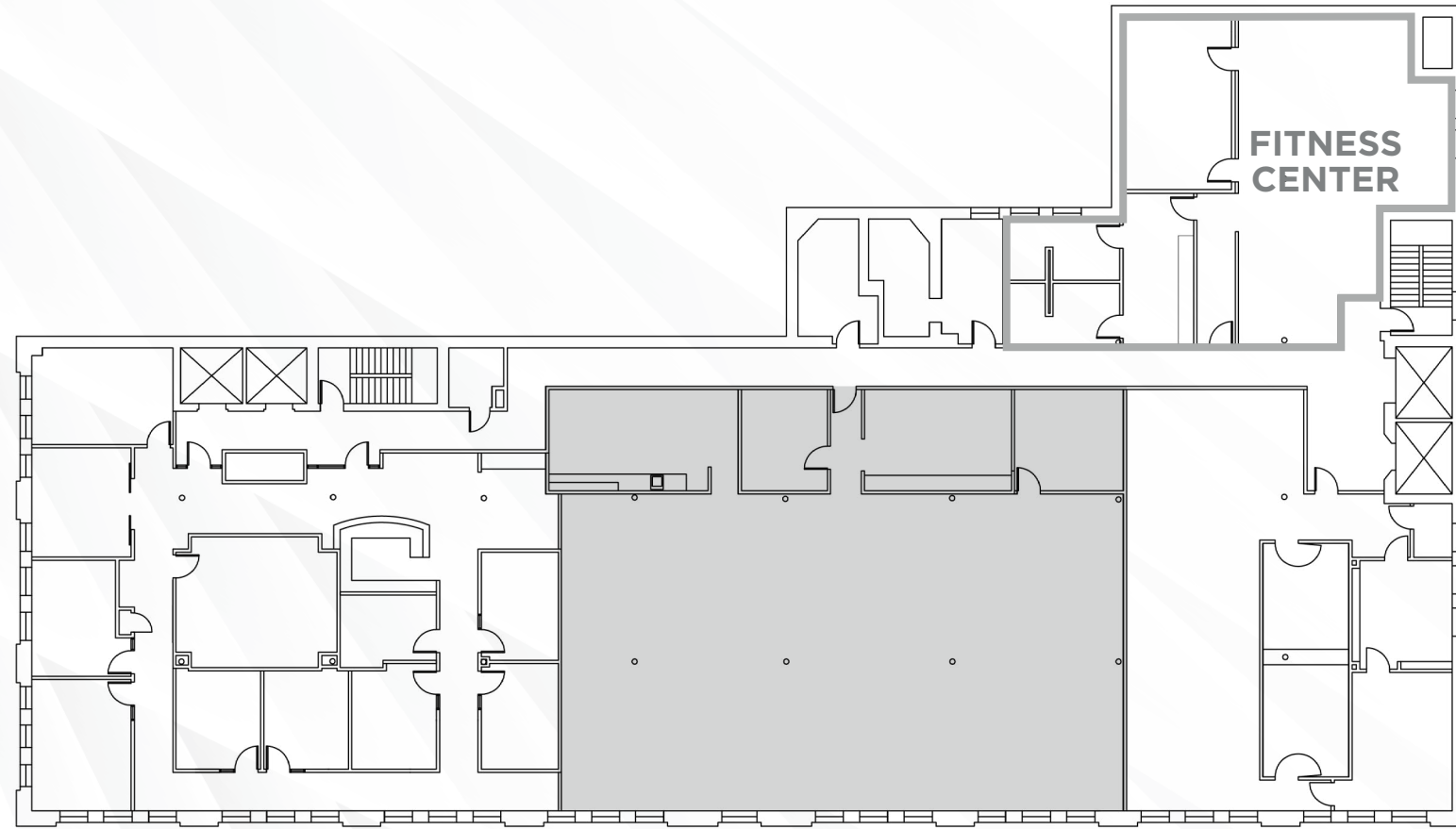
PHOTO GALLERY  
**700 WALNUT**



**SUITE 502** | 4,965 RSF

[Click Here for a Tour](#)

WALNUT ST.

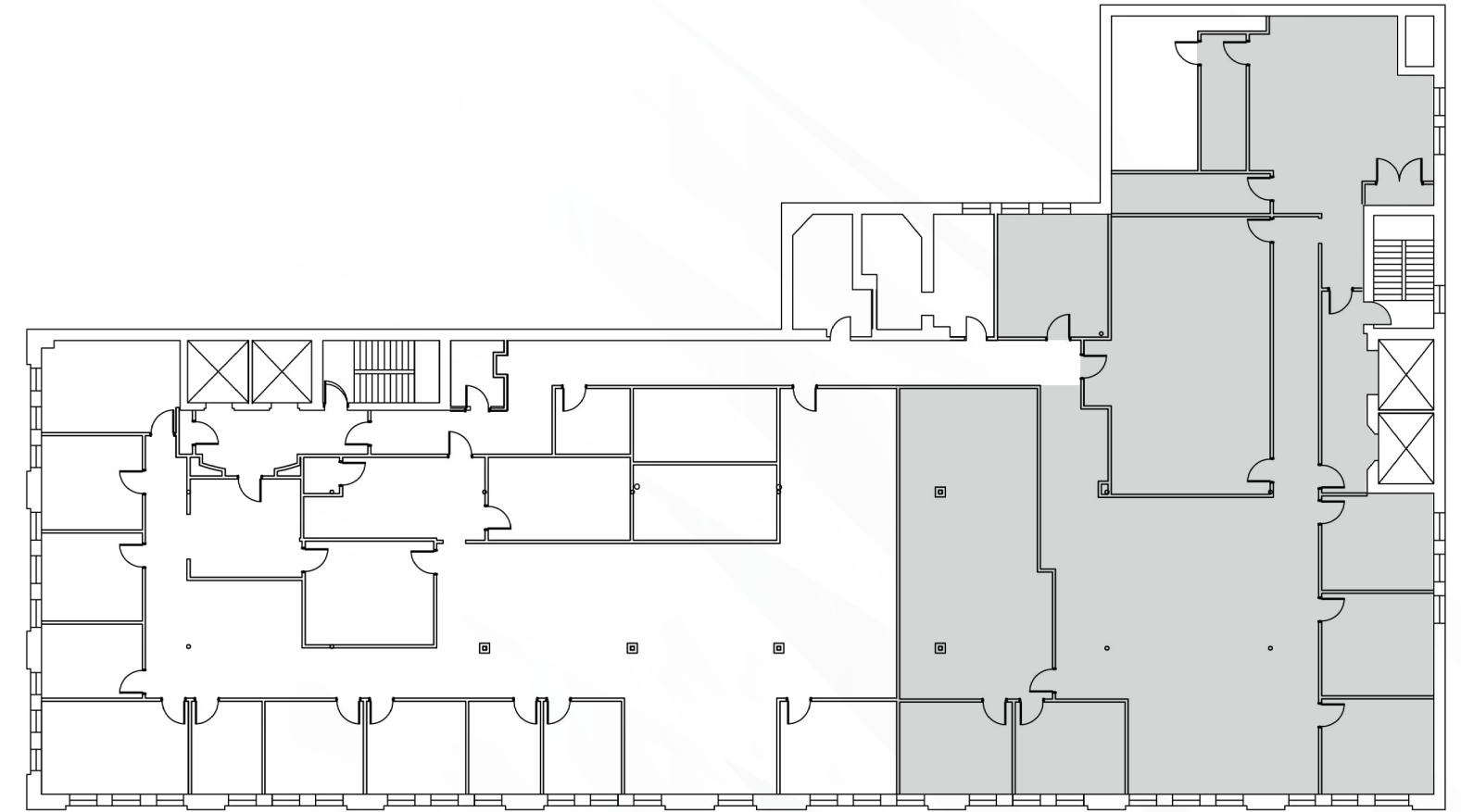


7<sup>th</sup> ST.

**SUITE 608** | 7,157 RSF

[Click Here for a Tour](#)

WALNUT ST.

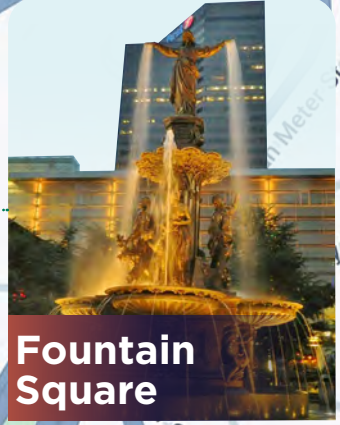


7<sup>th</sup> ST.





Cincinnati and Hamilton County Public Library



Fountain Square



Cincinnati Fire Museum



Aronoff Center for Arts



Taft Theatre

**700 WALNUT  
CINCINNATI**

**IN THE HEART OF CINCINNATI  
COMES A BOUTIQUE OFFICE ENVIRONMENT.**

**NEARBY AMENITIES**

*The LEMPICKA™*  
BY JEFF RUBY

**PHILIP BORTZ**  
JEWELERS

**FIRST WATCH.**  
THE DAYTIME CAFE



**LEGENDS** ● Restaurants ● Hotel ● Retail ● Point of Interest ● Parking Spaces





# 700 WALNUT

## CONTACT INFORMATION

### SCOTT ABERNETHY, SIOR, CCIM

Senior Director  
+1 513 763 3013  
scott.abernethy@cushwake.com

### JOE JANSZEN

Senior Director  
+1 513 549 3011  
joe.janszen@cushwake.com

[cincyofficeadvisors.com](http://cincyofficeadvisors.com)

©2024 Cushman & Wakefield. All rights reserved. The information contained in this communication is strictly confidential. This information has been obtained from sources believed to be reliable but has not been verified. NO WARRANTY OR REPRESENTATION, EXPRESS OR IMPLIED, IS MADE AS TO THE CONDITION OF THE PROPERTY (OR PROPERTIES) REFERENCED HEREIN OR AS TO THE ACCURACY OR COMPLETENESS OF THE INFORMATION CONTAINED HEREIN, AND SAME IS SUBMITTED SUBJECT TO ERRORS, OMISSIONS, CHANGE OF PRICE, RENTAL OR OTHER CONDITIONS, WITHDRAWAL WITHOUT NOTICE, AND TO ANY SPECIAL LISTING CONDITIONS IMPOSED BY THE PROPERTY OWNER(S). ANY PROJECTIONS, OPINIONS OR ESTIMATES ARE SUBJECT TO UNCERTAINTY AND DO NOT SIGNIFY CURRENT OR FUTURE PROPERTY PERFORMANCE.

