

PINEWOOD AT THE GROVE  
**1001 NAVAHO DRIVE**  
Raleigh, NC 27609



**SUITE 204C, OPTION B | APPROX. 2,422 RSF**

## PROPERTY FEATURES

- \$23.00/SF FS lease.
- ~4:1000 parking ratio.
- On-Site maintenance.
- Highly desirable location at the epicenter of two major developments (over \$1B each):
  - The Exchange
  - North Hills Innovation District
- Convenient location
  - 0.2 miles from Duke Raleigh Hospital
  - 0.3 miles from I-440 highway
  - 0.5 miles from Midtown East
  - 1.2 miles from North Hills Shopping Center



## SUITE FEATURES

- Fully renovated space: new flooring & paint, LED light fixtures, & reworked suite layouts.
- Eight windowed perimeter offices.
- Break area & large conference room.
- Semi-open floorplan.



## CONTACT US TODAY

ROSIE DANIEL  
Rosie@HobbsProperties.com

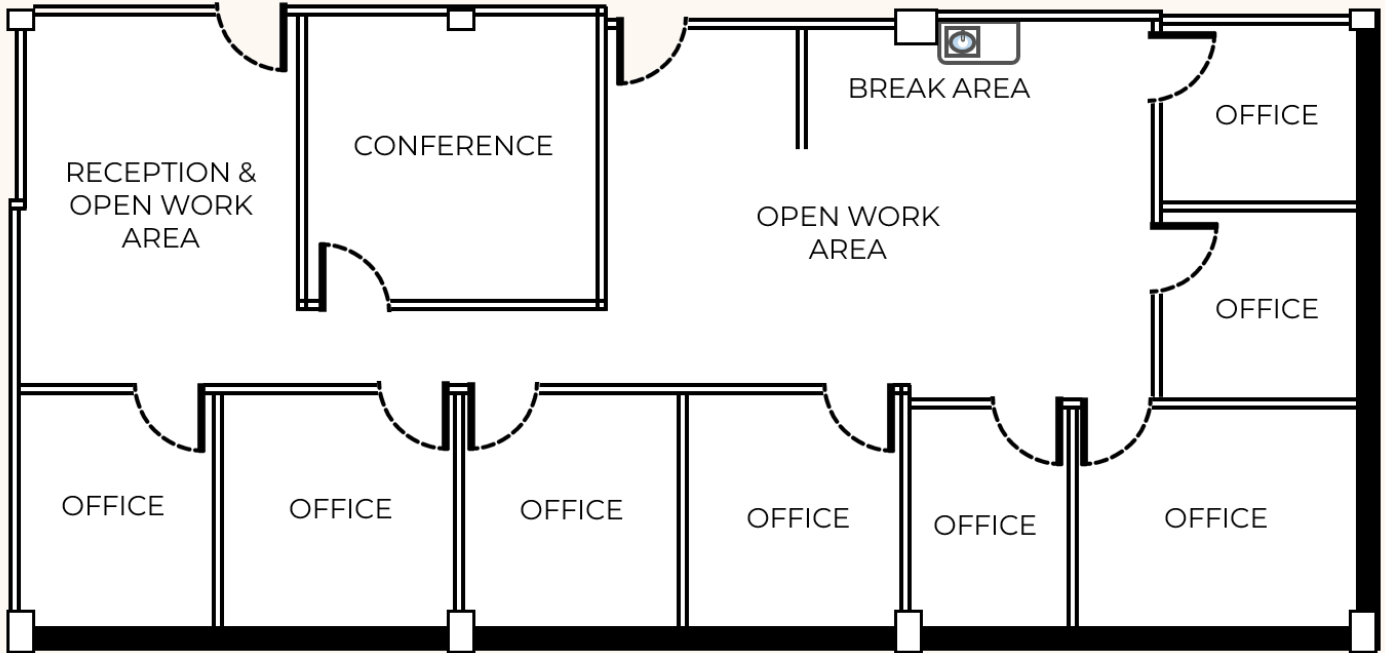
○ 919-828-9999  
C 919-696-6719

VISIT US AT  
Hobbsproperties.com

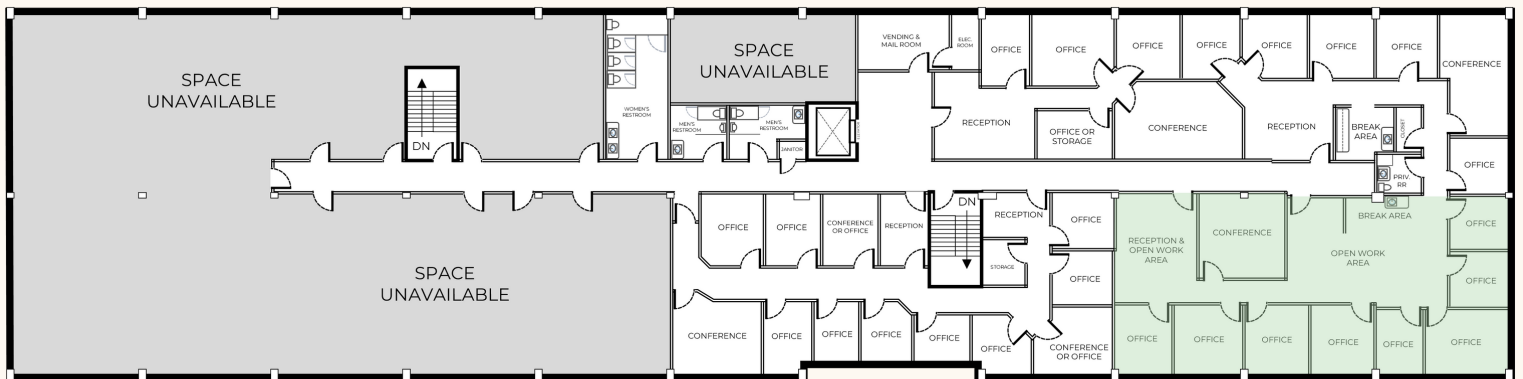


# FLOORPLANS

## SUITE OUTLINE



## FLOOR PLATE



Suite 204C  
OPTION B

## CONTACT US TODAY

ROSIE DANIEL  
Rosie@HobbsProperties.com

O 919-828-9999  
C 919-696-6719

VISIT US AT  
Hobbsproperties.com

