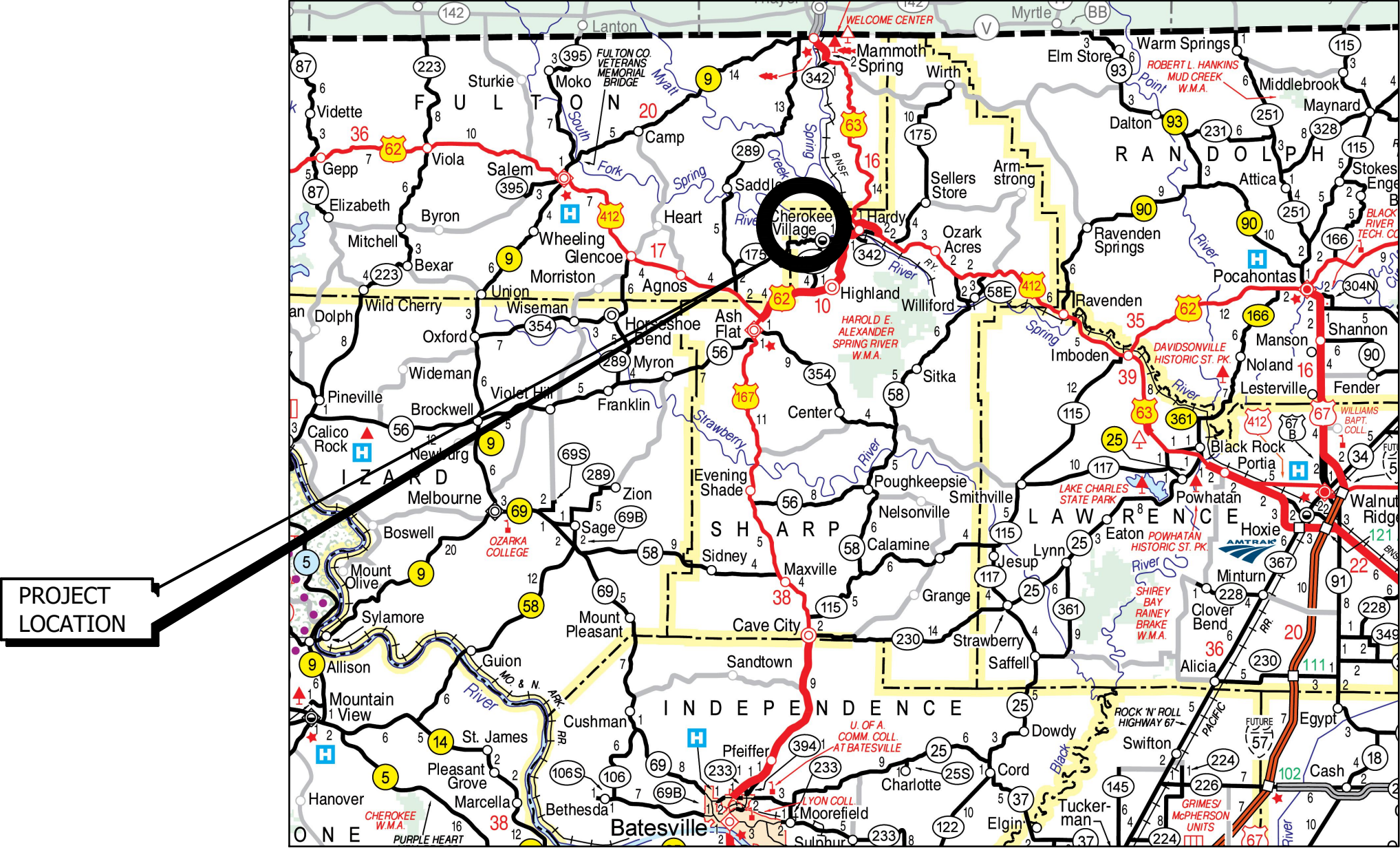
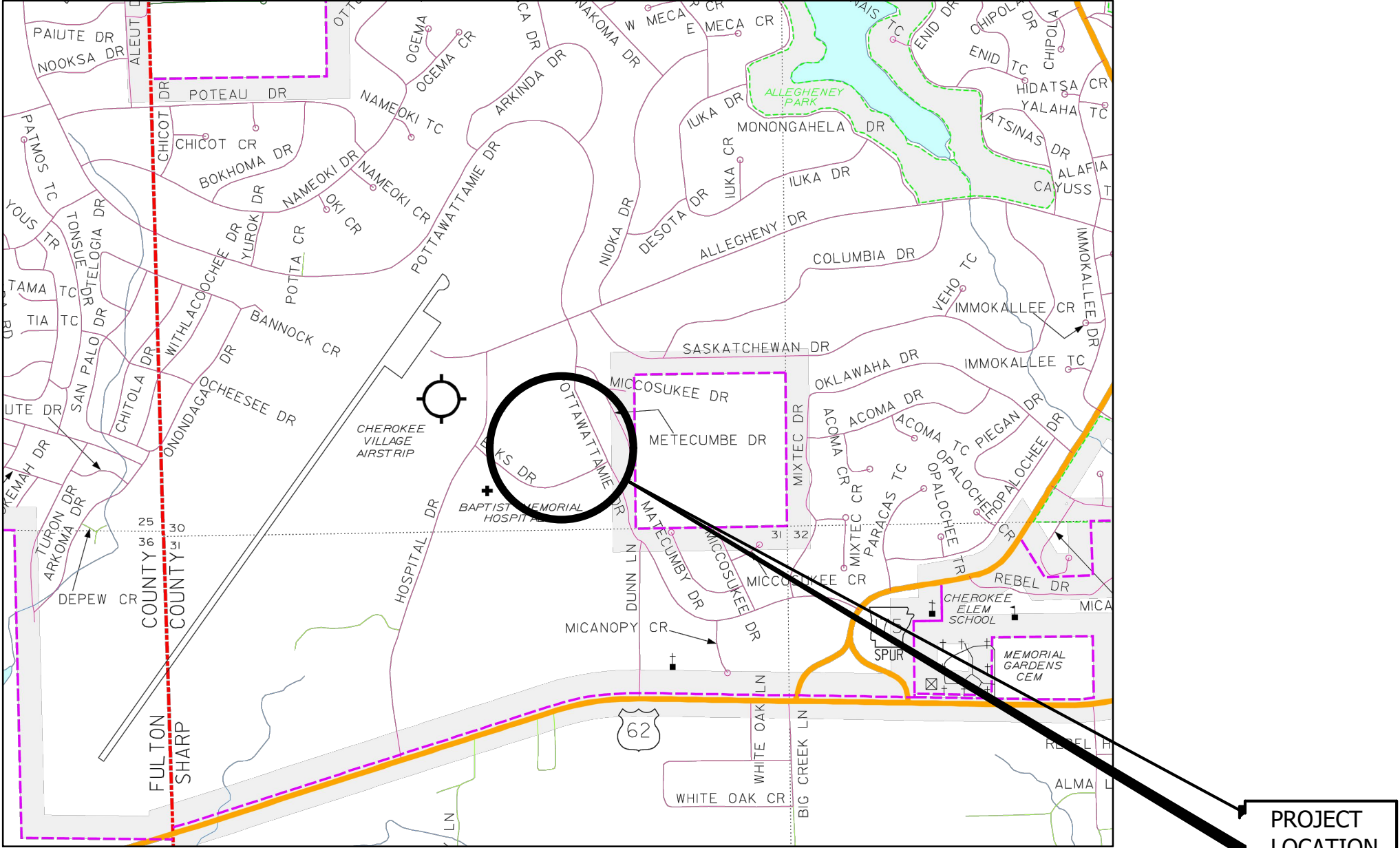


GILLEY RV PARK CHEROKEE VILLAGE, ARKANSAS



LOCATION MAP



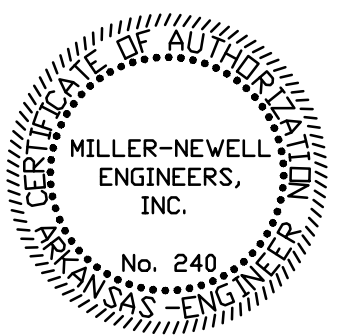
CHEROKEE VILLAGE SITE LOCATION MAP

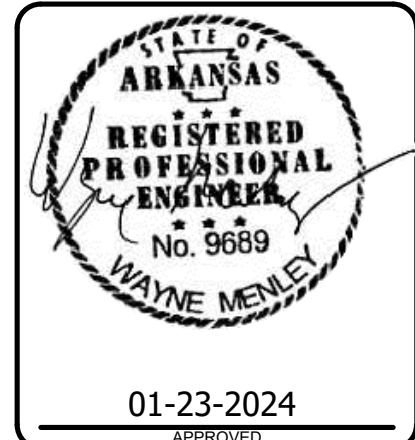
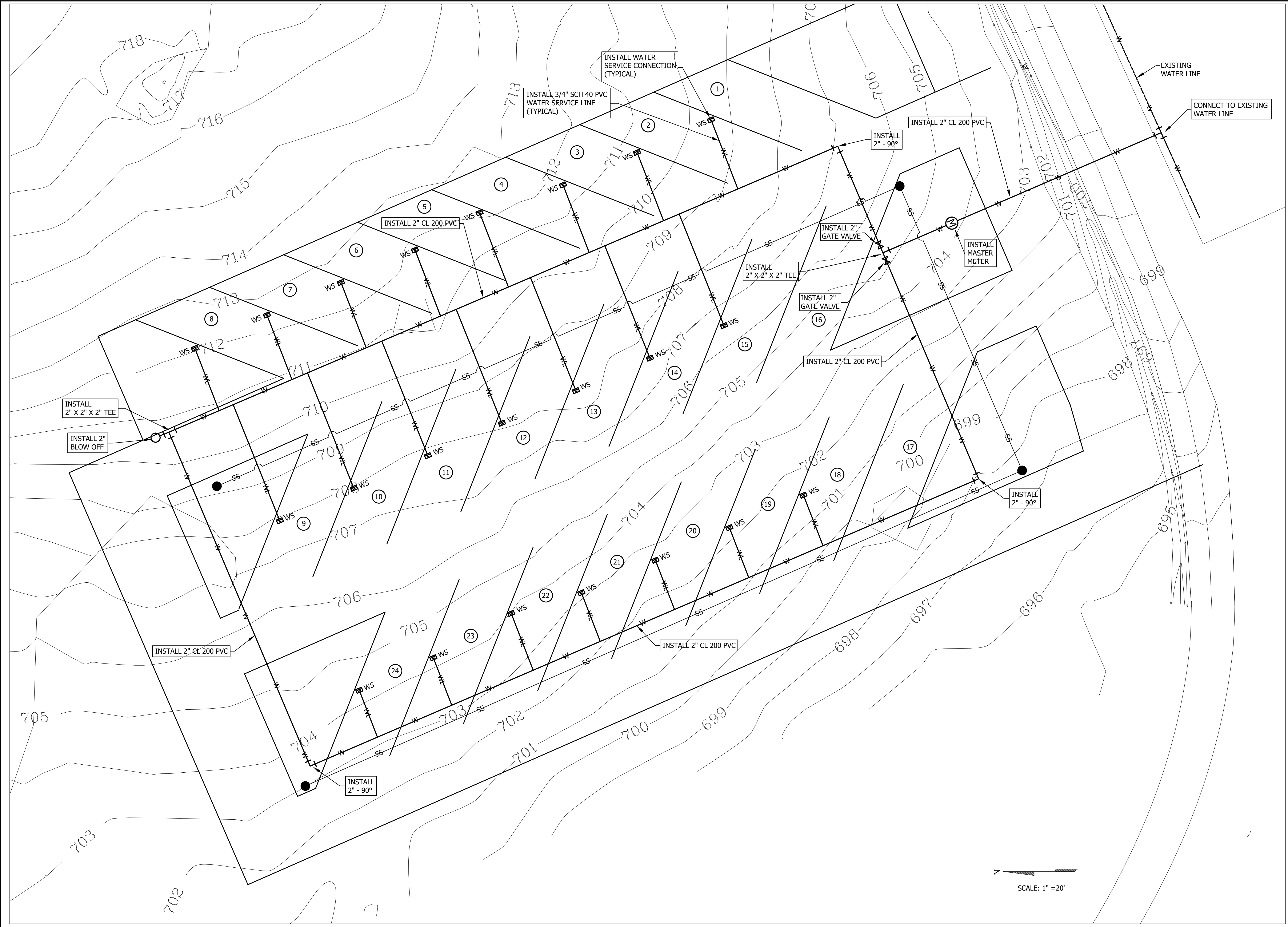
INDEX

1. WATER LAYOUT
2. SEWER LAYOUT
3. SEWER PROFILES
4. SEWER PROFILES
5. FORCE MAIN PLAN
6. FORCE MAIN PROFILE
7. PUMP STATION DETAILS
8. MISCELLANEOUS DETAILS
9. MISCELLANEOUS DETAILS
10. ELECTRICAL LAYOUT
11. ELECTRICAL SCHEMATICS
12. ELECTRICAL NOTES

REVISED 1-23-24

	<h2 style="margin: 0;">Miller-Newell Engineers, Inc.</h2>	<p style="margin: 0;"><i>Newport, AR</i></p>
---	---	--



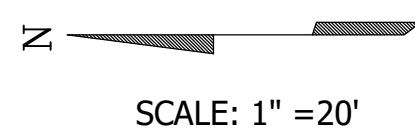


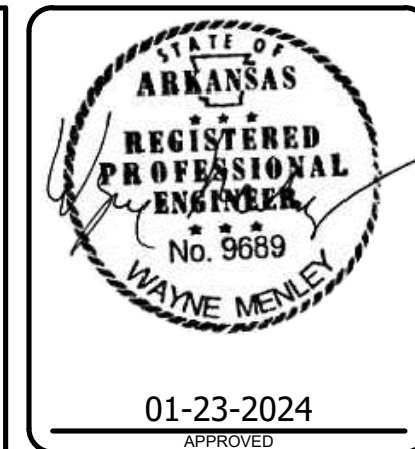
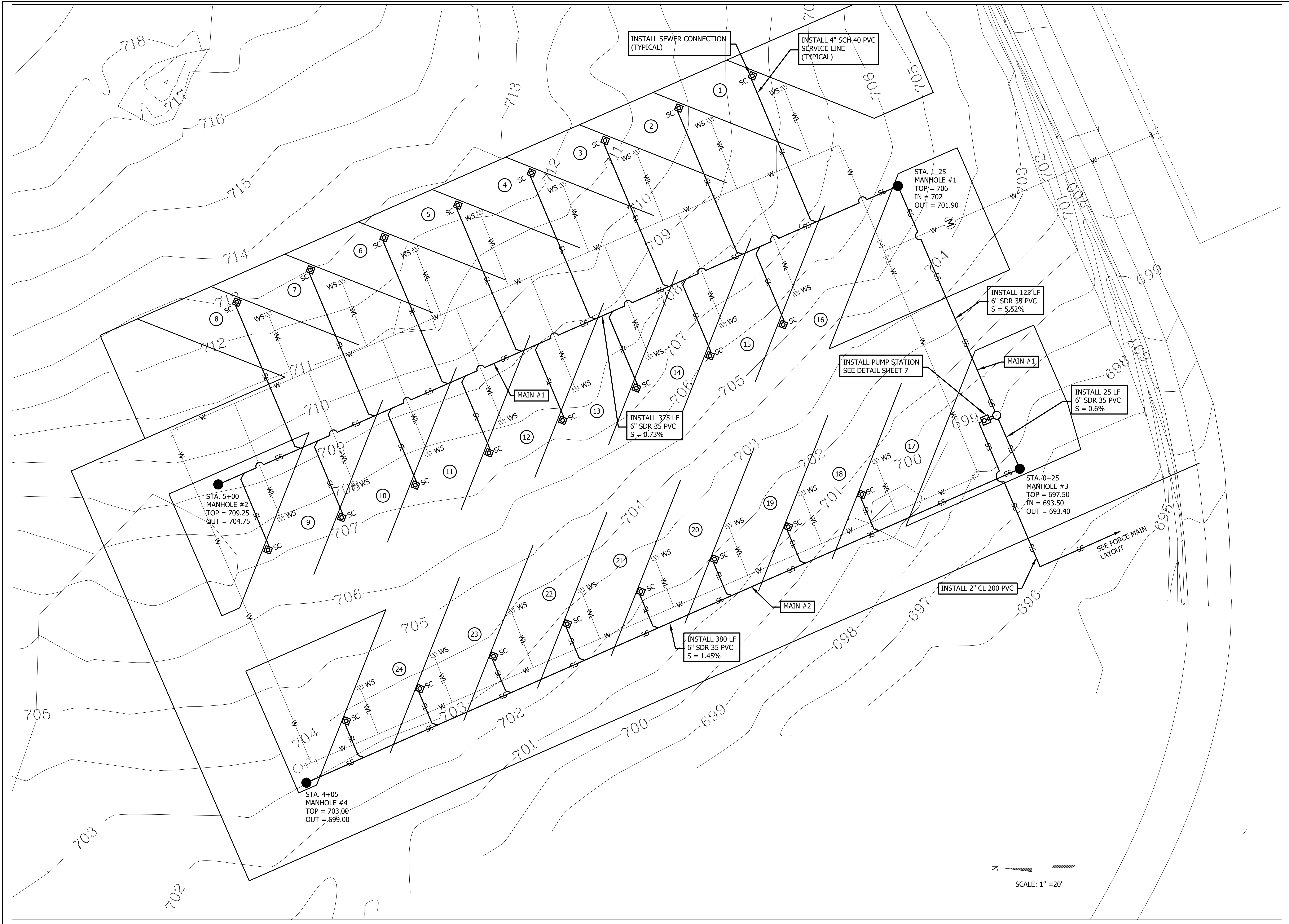
Miller Newell Engineers Inc.
 510 THIRD STREET NEWPORT, AR 72112
 PHONE: (870) 523-6651 FAX: (870) 523-6653
 EMAIL: MILNEWENGR@AOL.COM

WATER LAYOUT GILLEY RV PARK CHEROKEE VILLAGE, ARKANSAS

PROJECT NUMBER: 23098
 DRAWN BY: DHD
 CHECKED BY: WM
 DATE: OCT. 2023
 REVISIONS:
 1. REVISED 1-23-2024
 2.
 3.

SHEET NUMBER:
1 of 12
 DRAWER NUMBER:



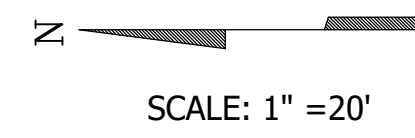


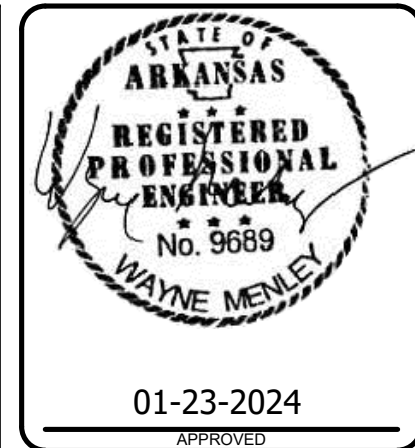
Miller Newell Engineers Inc.
 510 THIRD STREET
 NEWPORT, AR 72112
 PHONE: (870) 523-6531 FAX: (870) 523-6533
 EMAIL: MILNEWENG@aol.com

SEWER LAYOUT
GILLEY RV PARK
 CHEROKEE VILLAGE, ARKANSAS

PROJECT NUMBER: 23098
 DRAWN BY: DHD
 CHECKED BY: WM
 DATE: OCT. 2023
 REVISIONS:
 1. REVISED 1-23-2024
 2.
 3.

SHEET NUMBER:
2 of 12
 DRAWER NUMBER:



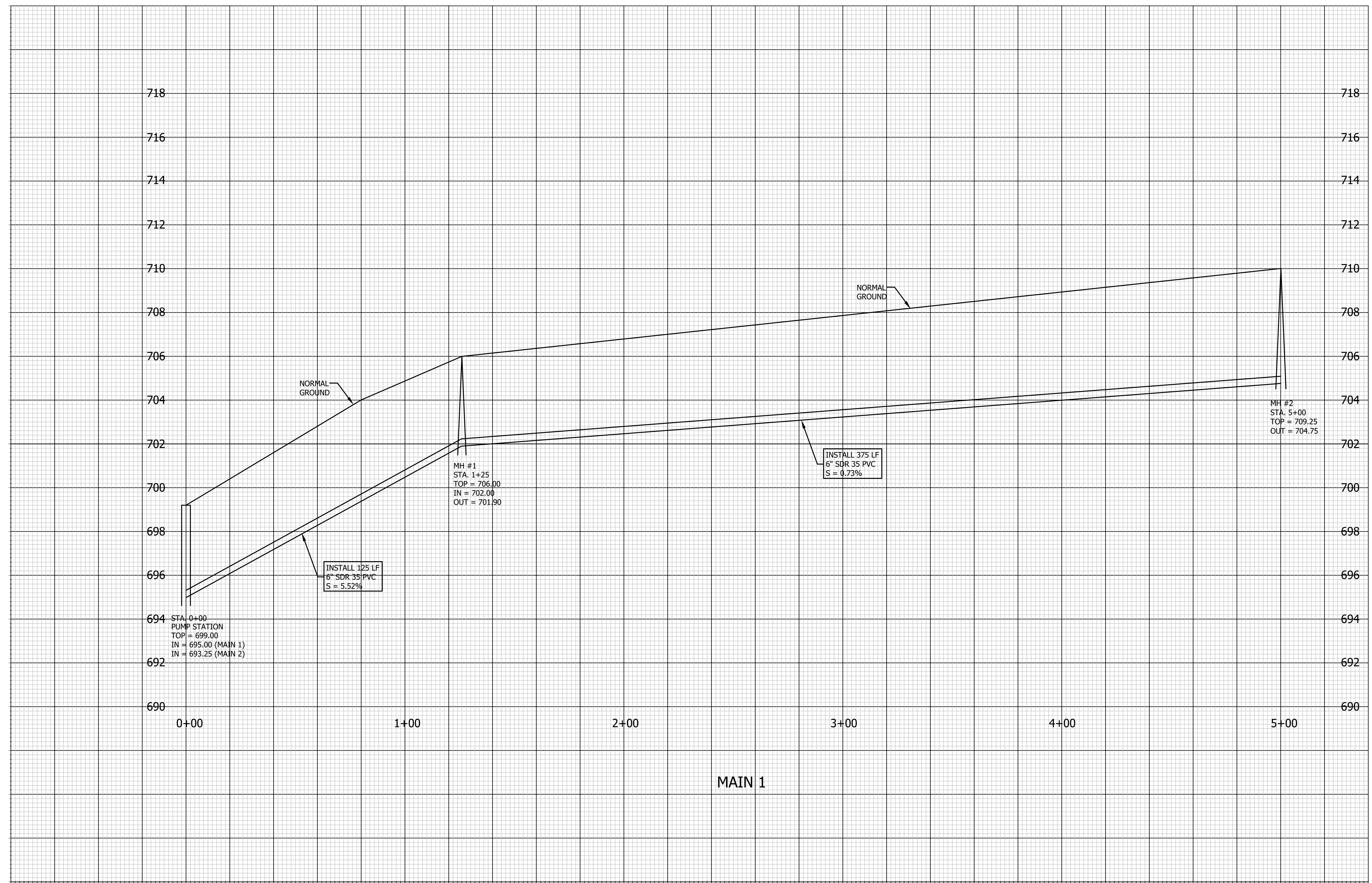


Miller Newell Engineers Inc.
510 THIRD STREET NEWPORT, AR 72112
PHONE: (870) 523-6531 FAX: (870) 523-6533
EMAIL: MILNEWENGR@AOL.COM

SEWER PROFILES GILLEY RV PARK CHEROKEE VILLAGE, ARKANSAS

PROJECT NUMBER: 23098
DRAWN BY: DHD
CHECKED BY: WM
DATE: OCT 2023
REVISIONS:
1. REVISED 1-23-2024
2.
3.

SHEET NUMBER:
3 of 12
DRAWER NUMBER:



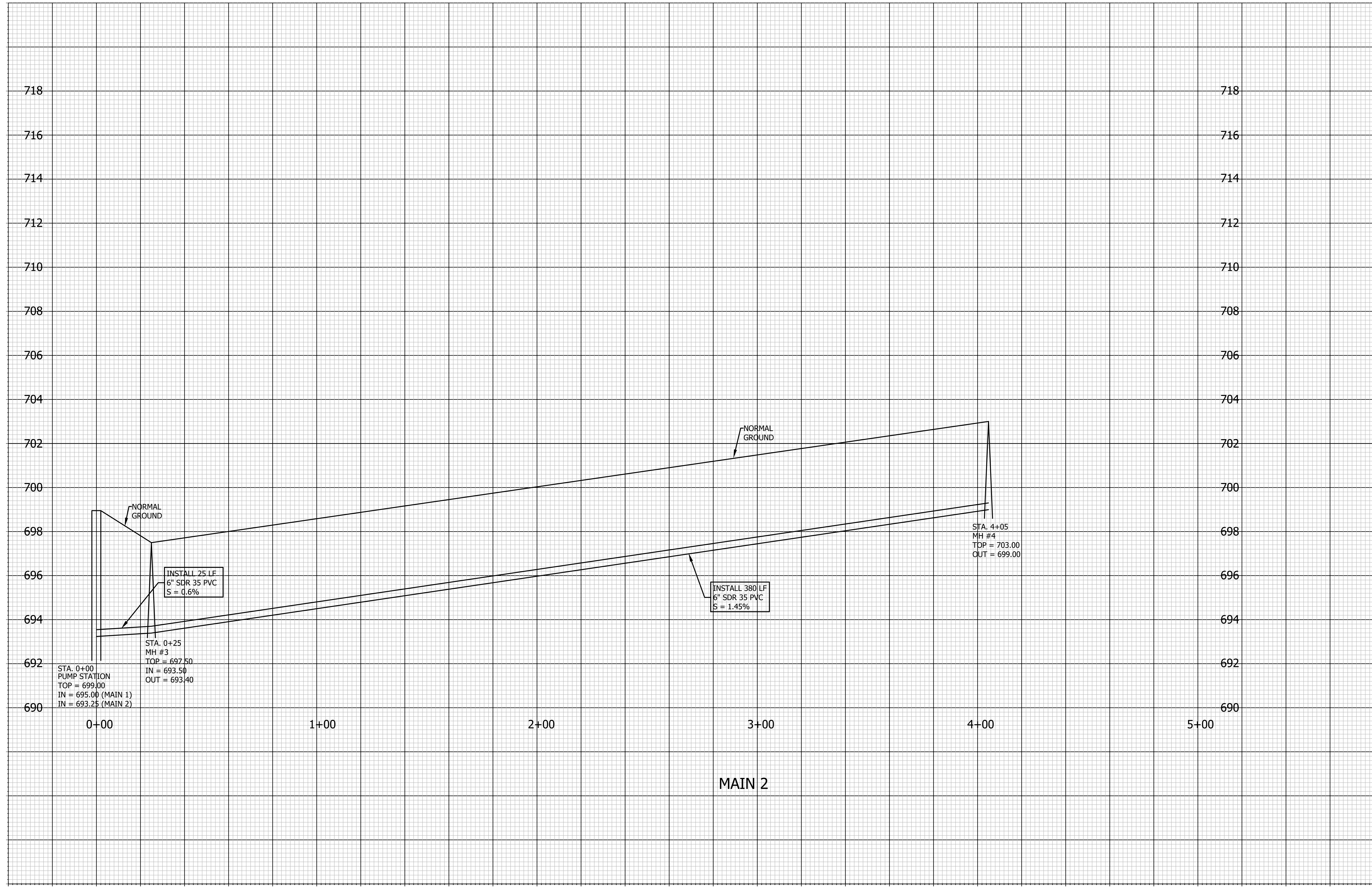


Miller Newell Engineers Inc.
 510 THIRD STREET NEWPORT, AR 72112
 PHONE: (870) 523-6531 FAX: (870) 523-6533
 MILLER - NEWELL EMAIL: MILNEWENGR@AOL.COM

SEWER PROFILES
GILLEY RV PARK
 CHEROKEE VILLAGE, ARKANSAS

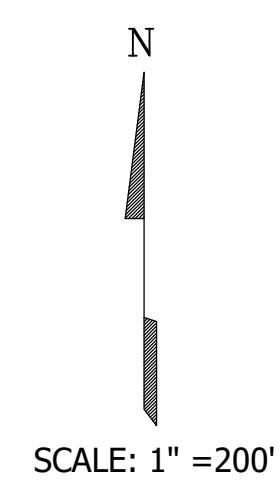
PROJECT NUMBER: 23098
 DRAWN BY: DHD
 CHECKED BY: WM
 DATE: OCT 2023
 REVISIONS:
 1. REVISED 1-23-2024
 2.
 3.

SHEET NUMBER:
4 of 12
 DRAWER NUMBER:





FORCE MAIN PLAN



Miller Newell Engineers Inc.
 510 THIRD STREET NEWPORT, AR 72112
 PHONE: (870) 523-6531 FAX: (870) 523-6533
 Miller - Newell EMAIL: MILNEWENGR@AOL.COM

FORCE MAIN PLAN
GILLEY RV PARK
 CHEROKEE VILLAGE, ARKANSAS

PROJECT NUMBER: 23098
 DRAWN BY: DHD
 CHECKED BY: WM
 DATE: OCT. 2023
 REVISIONS:
 1. REVISED 1-23-2024
 2.
 3.

SHEET NUMBER:
5 of 12
 DRAWER NUMBER:

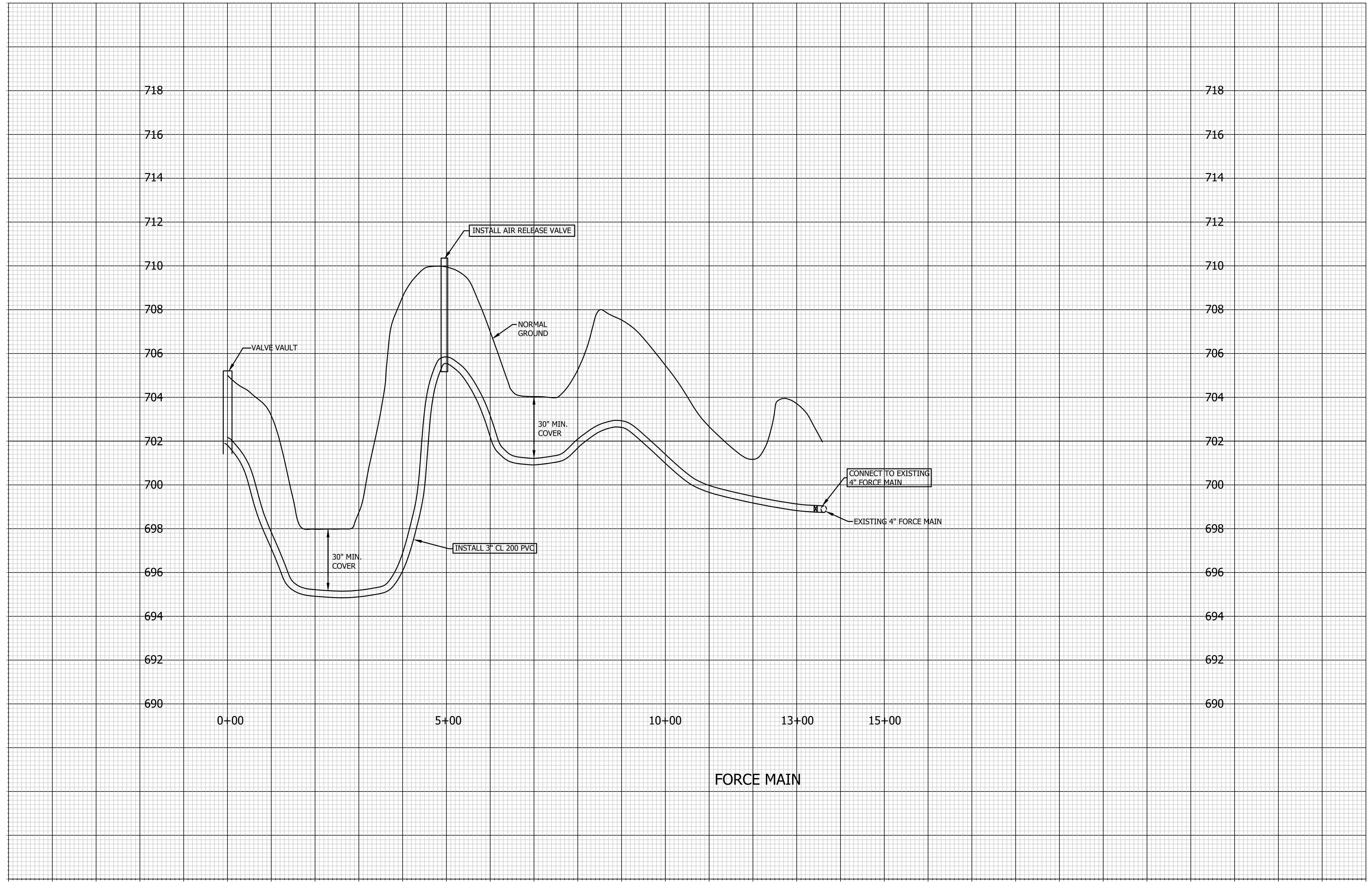


Miller Newell Engineers Inc.
 510 THIRD STREET NEWPORT, AR 72112
 PHONE: (870) 523-6531 FAX: (870) 523-6533
 MILLER - NEWELL EMAIL: MILNEWENGR@AOL.COM

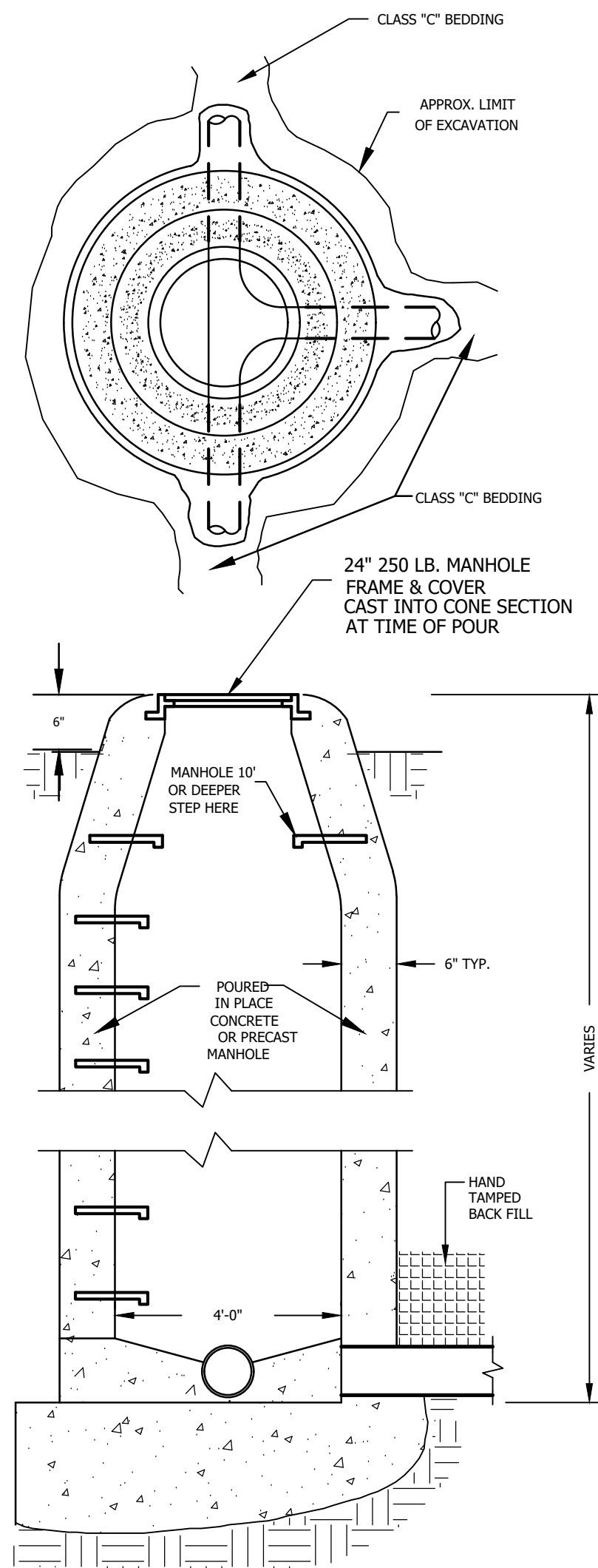
FORCE MAIN PROFILE
GILLEY RV PARK
 CHEROKEE VILLAGE, ARKANSAS

PROJECT NUMBER: 23098
 DRAWN BY: DHD
 CHECKED BY: WM
 DATE: OCT 2023
 REVISIONS:
 1. REVISED 1-23-2024
 2.
 3.

SHEET NUMBER:
6 of 12
 DRAWER NUMBER:

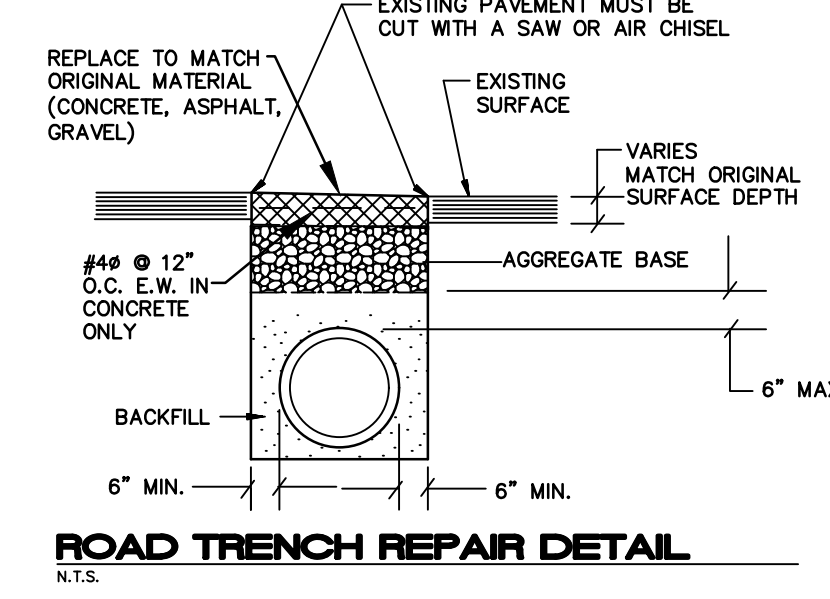
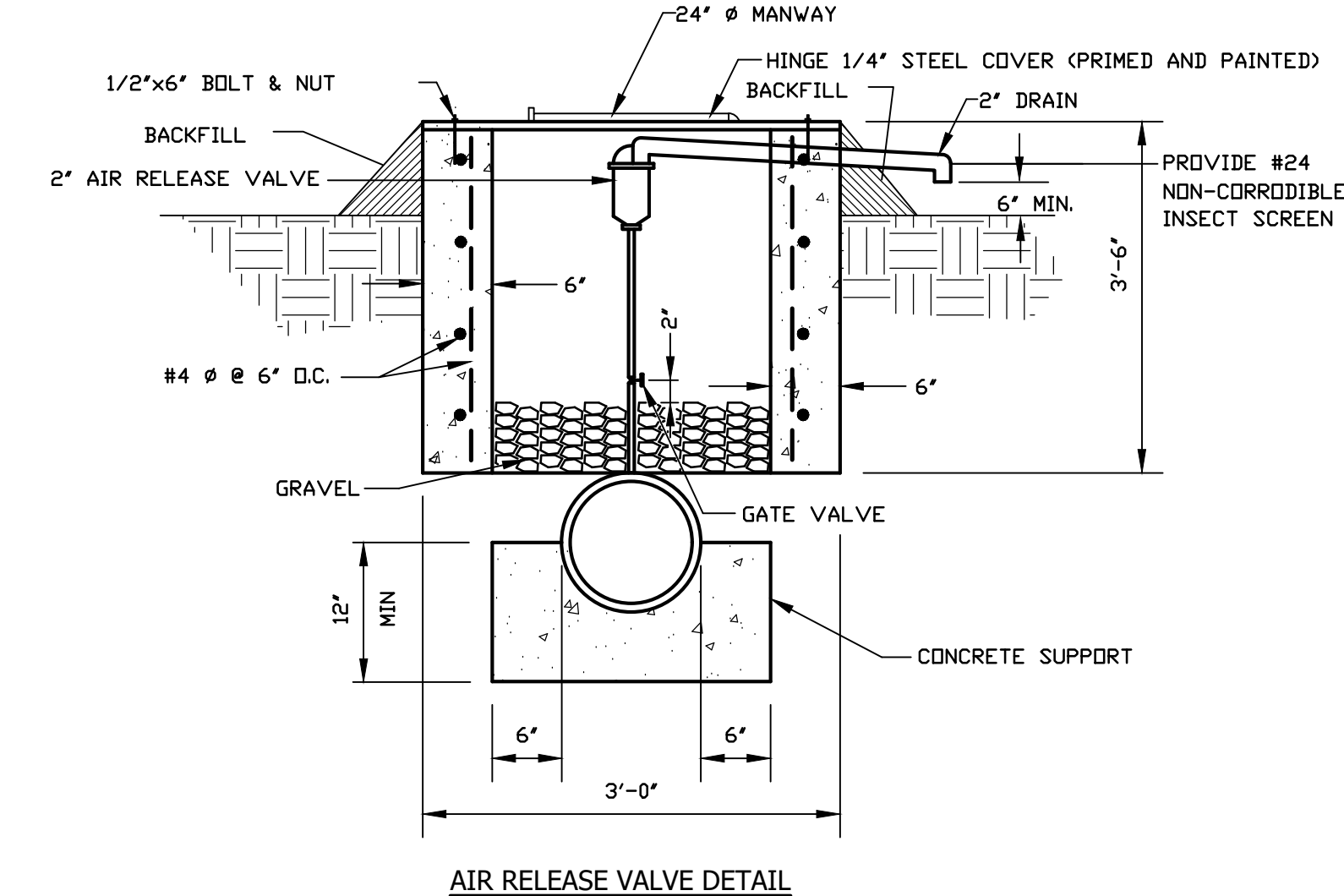
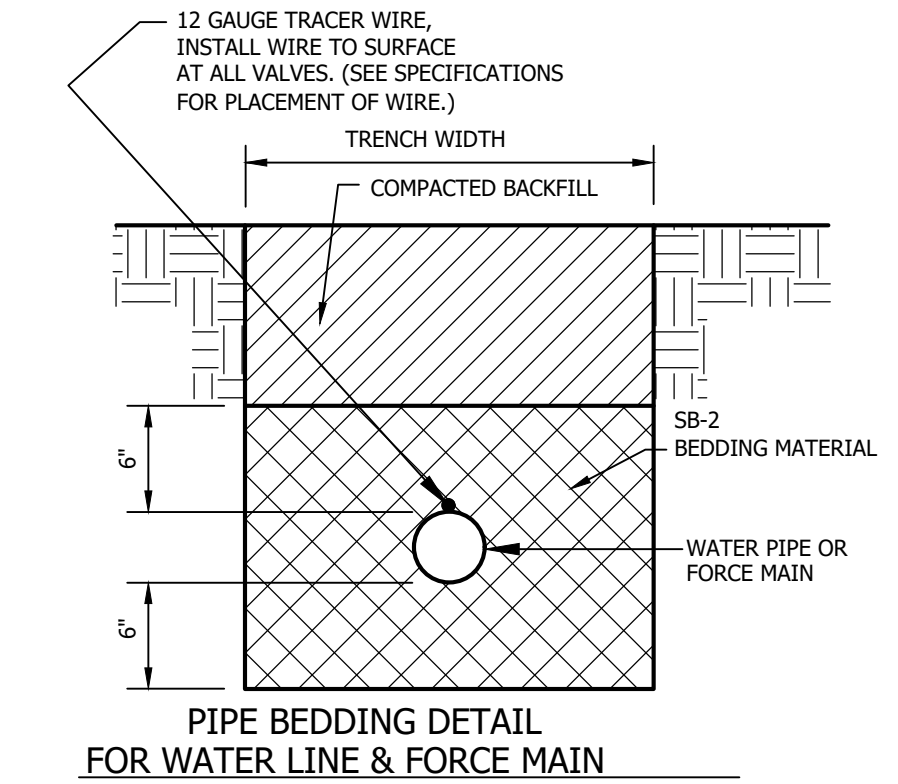
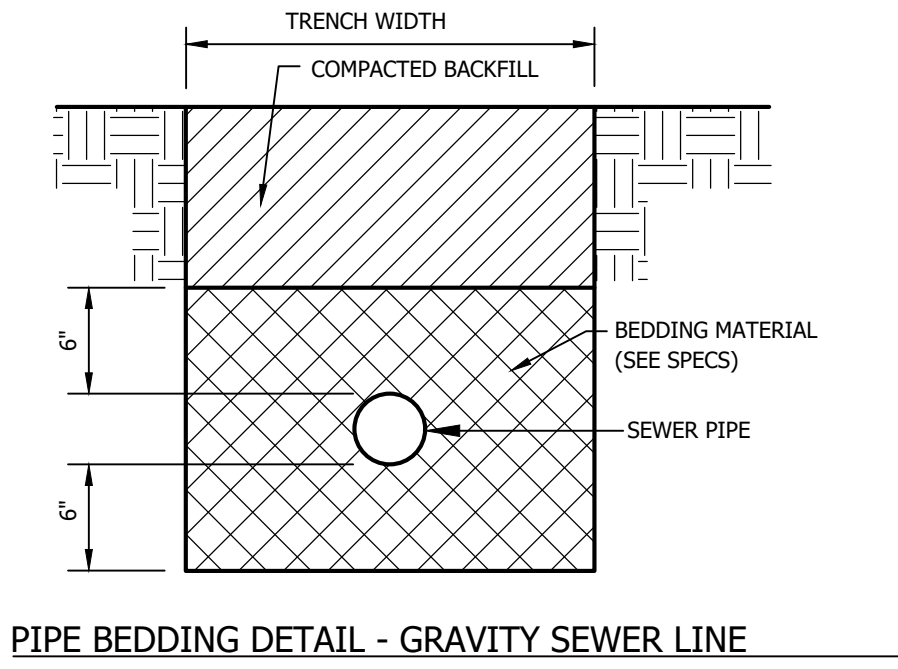


FORCE MAIN



NEW STANDARD MANHOLE

NOTE:
INSTALL ALL MANHOLES 6" ABOVE FINISH GRADE



THRUST BLOCKING SCHEDULE				
SIZE	PIPE CLASS	DEGREE OF BEND	SURFACE AREA OF BLOCKING IN UNDISTURBED SOIL	VOLUME OF CONC. IN WET AREAS
10"	200	45°	8.02 SF	2.0 CY
10"	200	90°	14.82 SF	3.3 CY
8"	200	45°	5.14 SF	1.1 CY
8"	200	90°	9.49 SF	2.1 CY
6"	200	45°	2.88 SF	0.6 CY
6"	200	90°	5.23 SF	1.2 CY
4"	200	45°	1.28 SF	0.3 CY
4"	200	90°	2.37 SF	0.5 CY
3"	200	45°	0.72 SF	0.2 CY
3"	200	90°	1.33 SF	0.3 CY
2"	200	45°	0.32 SF	0.2 CY
2"	200	90°	0.60 SF	0.2 CY

NOTE:
THE BLOCKING DETAILS ON THIS SHEET SHALL APPLY TO ALL WATER LINES AND FORCE MAINS PLACED UNDER THIS PROJECT. ANY CHANGE OF DIRECTION SHALL BE BLOCKED AS DETAILED. TAPPING TEE LOCATIONS SHALL BE BLOCKED AS PER BLOCKING FOR TEE DETAILS. THE INSPECTOR SHALL WITNESS ALL BLOCKING PRIOR TO COVERING.

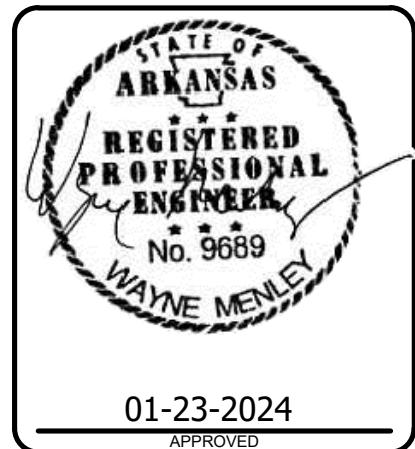
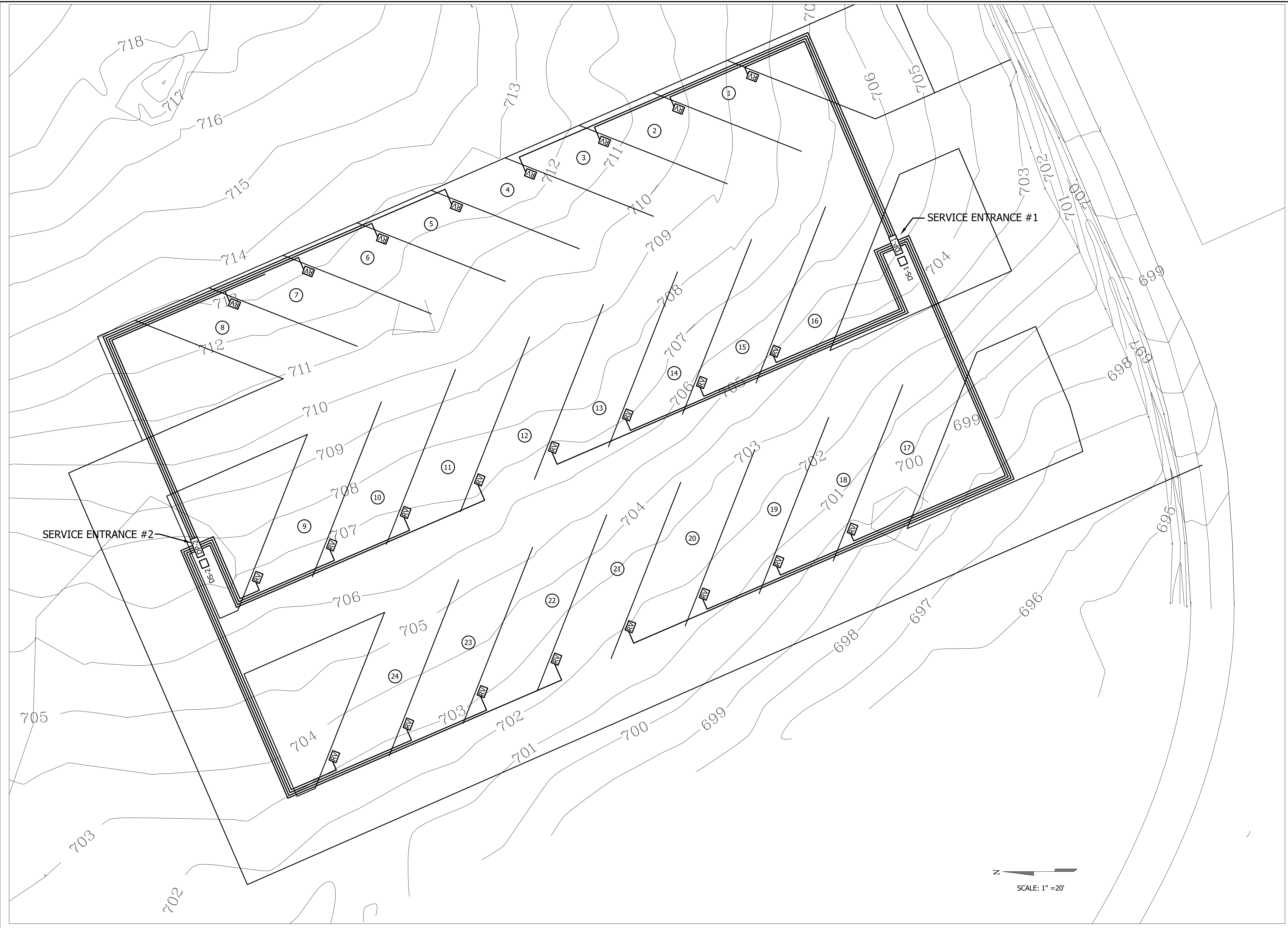


Miller Newell Engineers Inc.
510 THIRD STREET
NEWPORT, AR 72112
PHONE: (870) 523-6531
FAX: (870) 523-6533
EMAIL: MILNEWENGR@AOL.COM

MISCELLANEOUS DETAILS
GILLEY RV PARK
CHEROKEE VILLAGE, ARKANSAS

PROJECT NUMBER: 23098
DRAWN BY: DHD
CHECKED BY: WM
DATE: OCT 2023
REVISIONS:
1. REVISED 1-23-2024
2.
3.

SHEET NUMBER:
9 of 12
DRAWER NUMBER:

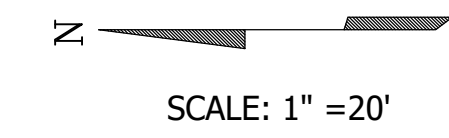


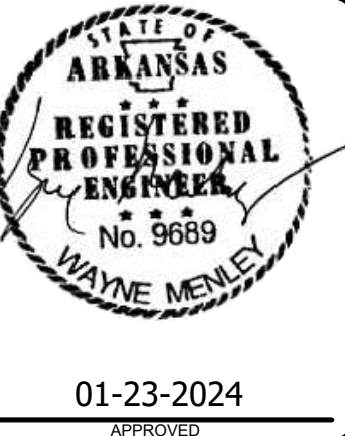
Miller Newell Engineers Inc.
 510 THIRD STREET
 NEWPORT, AR 72112
 PHONE: (870) 523-6531 FAX: (870) 523-6533
 MILLER - NEWELL EMAIL: MILNEWENG@AOL.COM

ELECTRICAL LAYOUT
GILLEY RV PARK
 CHEROKEE VILLAGE, ARKANSAS

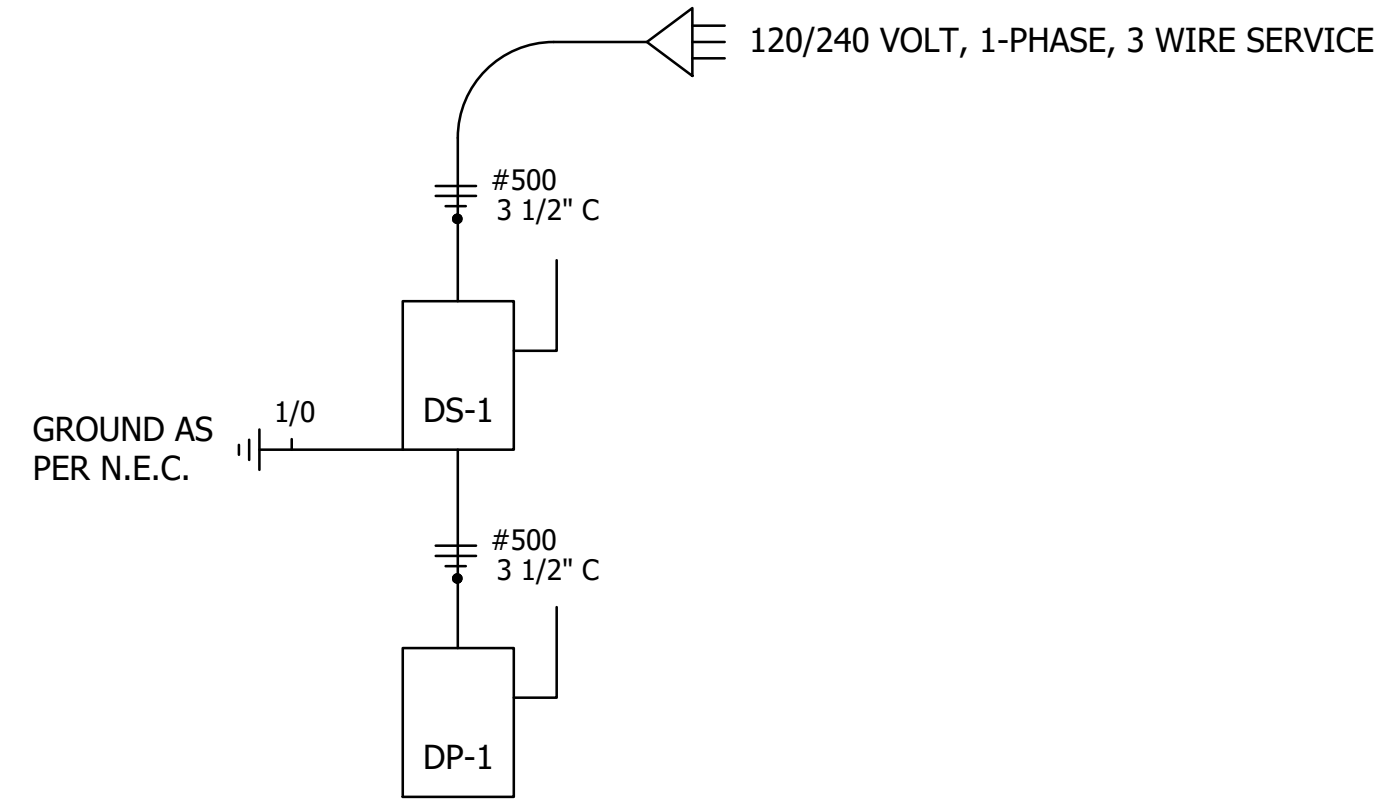
PROJECT NUMBER: 23098
 DRAWN BY: DHD
 CHECKED BY: WM
 DATE: OCT. 2023
 REVISIONS:
 1- REVISED 1-23-2024
 2.
 3.

SHEET NUMBER:
10 of 12
 DRAWER NUMBER:

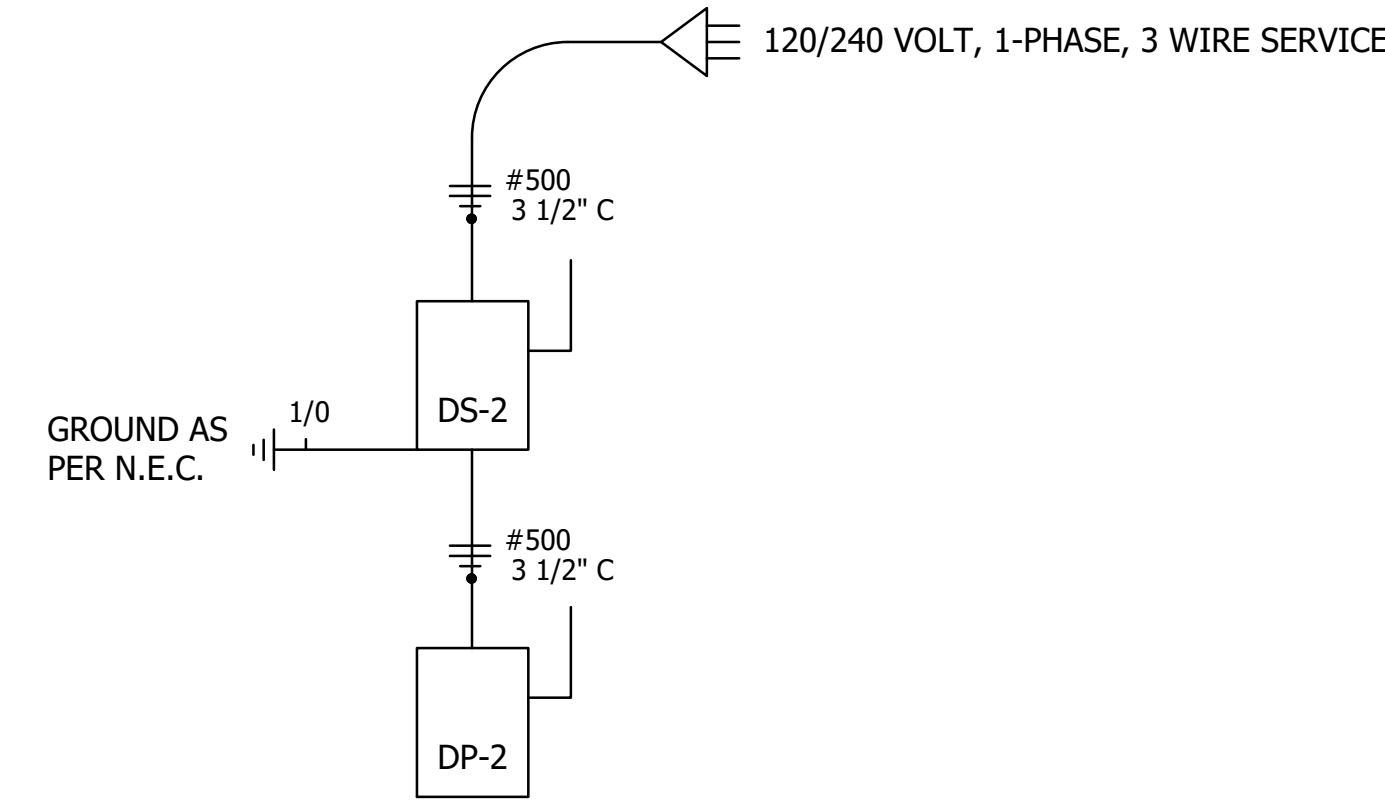




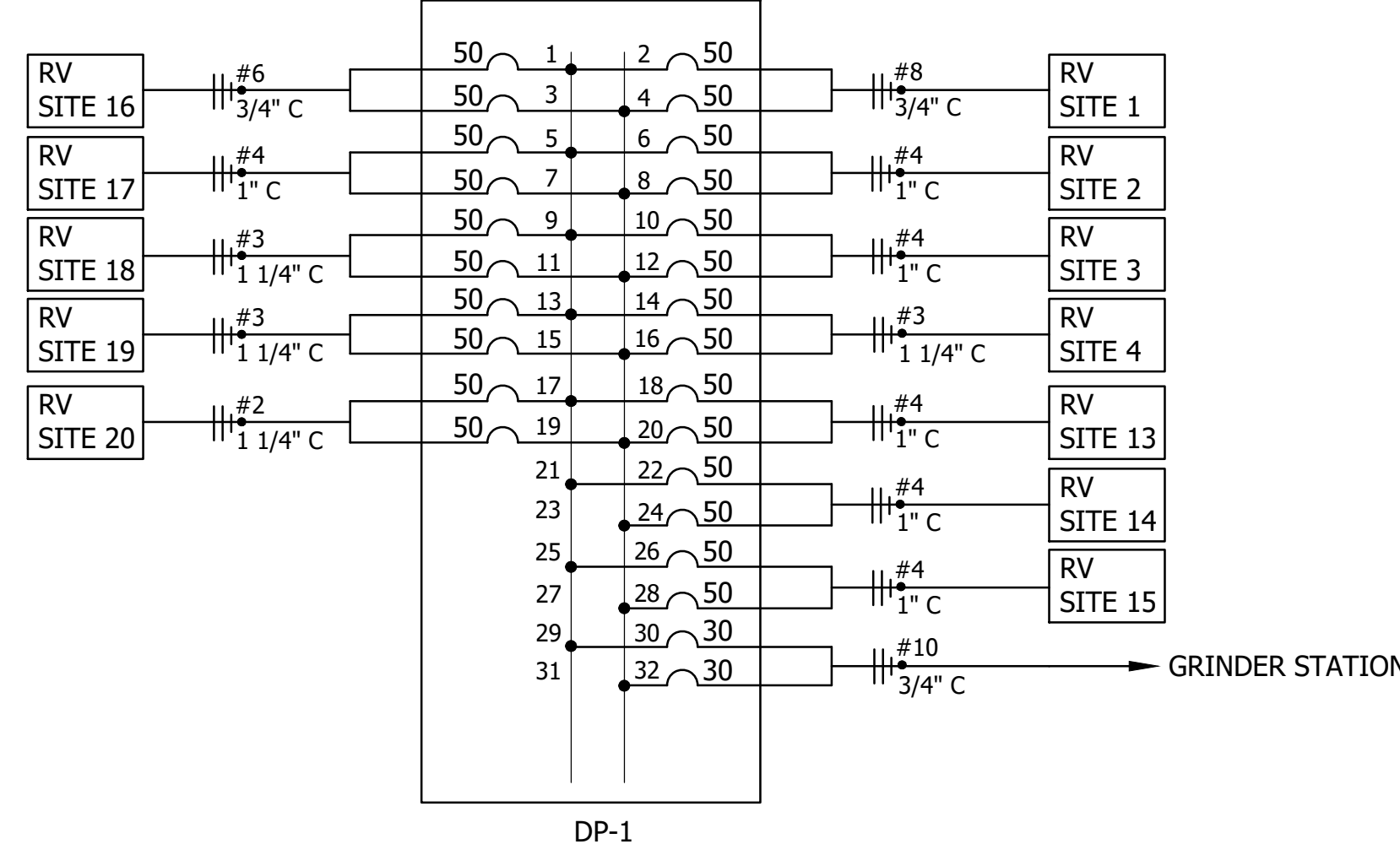
Miller Newell Engineers Inc.
 510 THIRD STREET
 NEWPORT, AR 72112
 PHONE: (870) 523-6531 FAX: (870) 523-6533
 EMAIL: MLNEWENG@aol.com



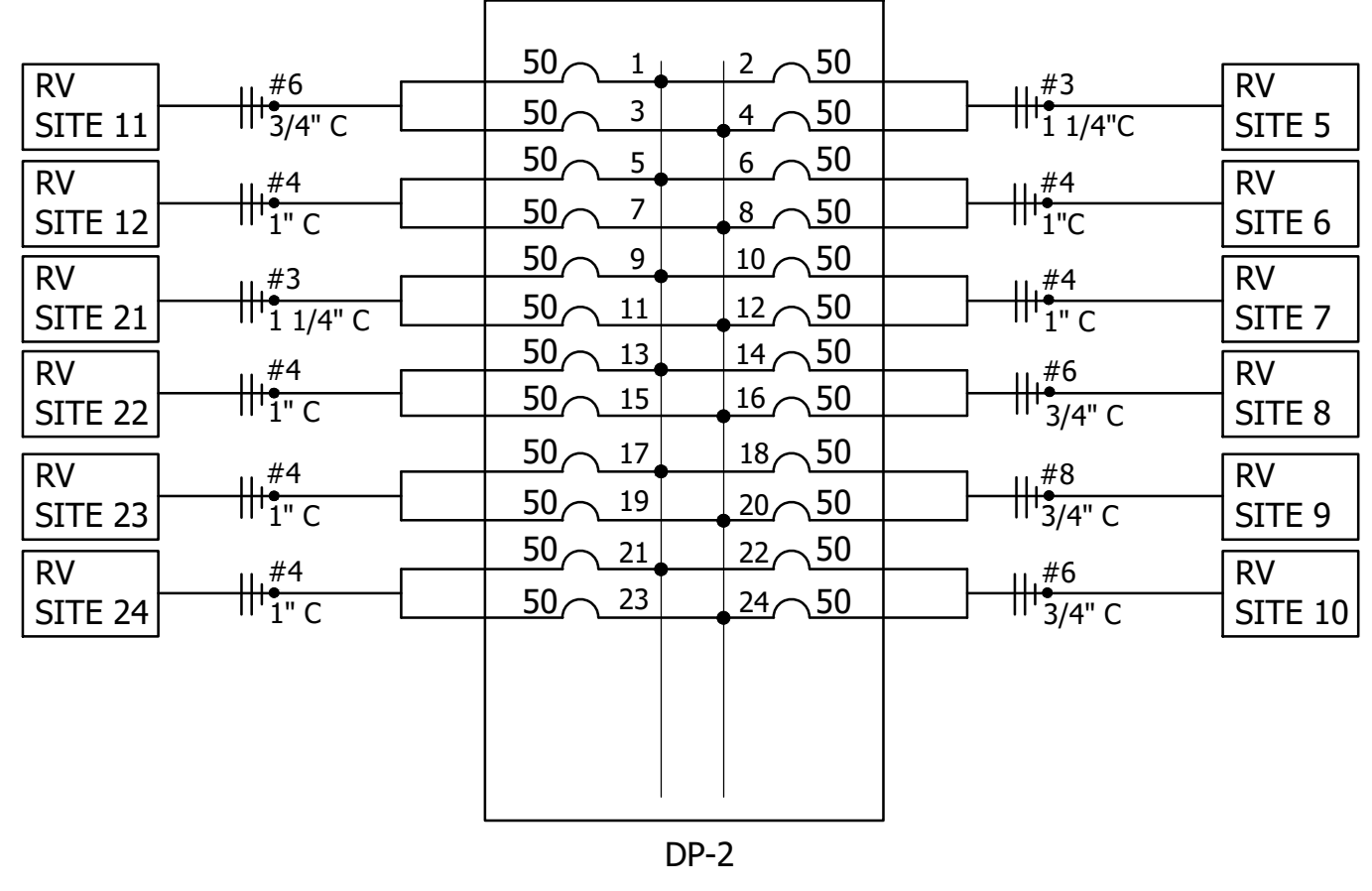
SERVICE ENTRANCE #1 SCHEMATIC



SERVICE ENTRANCE #2 SCHEMATIC



SERVICE ENTRANCE #1 SCHEMATIC

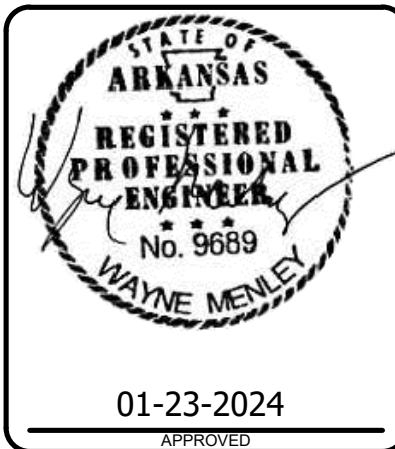


SERVICE ENTRANCE #2 SCHEMATIC

ELECTRICAL SCHEMATICS
GILLEY RV PARK
 CHEROKEE VILLAGE, ARKANSAS

PROJECT NUMBER: 23098
 DRAWN BY: DHD
 CHECKED BY: VM
 DATE: OCT 2023
 REVISIONS:
 1. REVISED 1-23-2024
 2.
 3.

SHEET NUMBER:
11 of 12
 DRAWER NUMBER:



Miller Newell Engineers Inc.
 NEWPORT, AR 72112
 510 THIRD STREET
 PHONE: (870) 523-6531 FAX: (870) 523-6533
 MILLER - NEWELL EMAIL: MILNEWENG@aol.com

ELECTRICAL NOTES
GILLEY RV PARK
 CHEROKEE VILLAGE, ARKANSAS

PROJECT NUMBER: 23098
 DRAWN BY: DHD
 CHECKED BY: WM
 DATE: OCT 2023
 REVISIONS:
 1. REVISED 1-23-2024
 2.
 3.

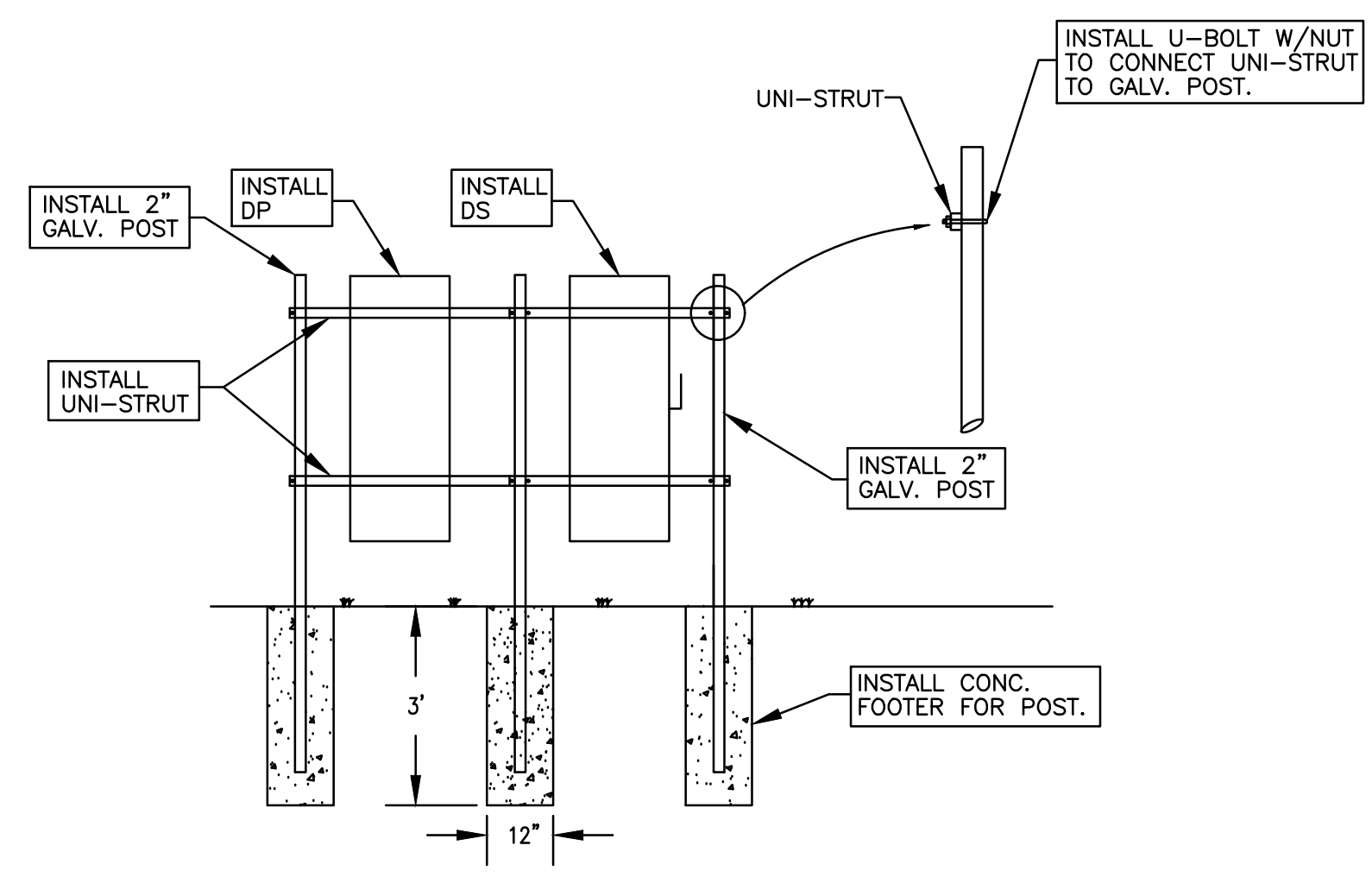
SHEET NUMBER:
12 of 12
 DRAWER NUMBER:

ELECTRICAL NOTES.

- CONTRACTOR SHALL VERIFY LOCATION OF ALL PROPOSED EQUIPMENT WITH OWNER.
- CONTRACTOR SHALL UPSIZE WIRE AS REQUIRED FOR VOLTAGE DROP IF EQUIPMENT IS INSTALLED AT A DIFFERENT LOCATION THAN SHOWN ON PLANS. SEE TABLE NO. 1 THIS SHEET FOR WIRE SIZING GUIDE.
- ALL WIRE IS THHN COPPER UNLESS SHOWN OTHERWISE.
- ALL WIRE IS TYPE THHN COPPER. ALL SIZES ARE #12 UNLESS SHOWN OTHERWISE.
- ALL WIRING AND INSTALLATIONS SHALL MEET ALL N.E.C. REQUIREMENTS.
- ALL CIRCUIT BREAKERS ARE 20 AMP UNLESS SHOWN OTHERWISE.
- ALL CONDUIT SIZE IS 1/2" UNLESS SHOWN OTHERWISE.
- FURNISH AND INSTALL ALL ELECTRICAL SYSTEMS COMPLETE IN EVERY RESPECT AND READY TO OPERATE. FURNISH ALL MISCELLANEOUS ITEMS AND ACCESSORIES REQUIRED FOR SUCH INSTALLATION, WHETHER OR NOT EACH SUCH ITEM OR ACCESSORY IS SHOWN ON THE DRAWINGS OR MENTIONED IN THE SPECIFICATIONS.
- PROVIDE RACEWAYS FOR ALL WIRING SYSTEMS, MINIMUM 3/4 INCH. RACEWAYS SHALL INCLUDE RIGID GALVANIZED STEEL, CONDUIT, RIGID ALUMINUM CONDUIT, (EMT) ELECTRICAL METALLIC TUBING, FLEXIBLE CONDUIT, SURFACE METAL RACEWAYS, WIRE WAYS AND TROUGHS. RACEWAYS SHALL BE MECHANICALLY AND ELECTRICALLY CONTINUOUS FROM SERVICE ENTRANCE TO FINAL OUTLET. RACEWAYS SHALL BE RUN PERPENDICULAR AND PARALLEL TO BUILDING CONSTRUCTION. EXCEPT IN MECHANICAL ROOMS OR AS OTHERWISE NOTED, ALL RACEWAYS SHALL BE CONCEALED. AL BREAKS AND TURNS WITH EXPOSED RACEWAYS SHALL BE MADE WITH MALLEABLE IRON CADMIUM OR HOT DIPPED GALVANIZED CONDUIT FITTINGS AND COVERS. RACEWAYS SHALL BE RIGIDLY SUPPORTED WITH MALLEABLE IRON CONDUIT CLAMPS OR TRAPEZE SUPPORTS AND CLAMPS AT INTERVALS NOT EXCEEDING 7 FEET WITH 12 INCHES OF ALL OUTLET BOXES, ELBOWS, AND CHANGES OF DIRECTION. CONCEALED RACEWAYS SHALL BE SUPPORTED FROM STRUCTURAL MEMBERS AND NOT FURRING. ALL RACEWAY SYSTEMS SHALL BE COMPLETELY INSTALLED AND SECURED AND SWABBED OUT, AND ALL WORK IN THE AREA SHALL HAVE PROGRESSED SUFFICIENTLY TO PREVENT INJURY TO CABLES, BEFORE ANY CONDUCTORS ARE INSTALLED. PROVIDE CAPS AND PLUGS ON ENDS OF RACEWAYS AND OPENINGS IN BOXES TO PREVENT FOREIGN MATERIAL FROM ENTERING DURING CONSTRUCTION PROVIDE DOUBLE LOCKNUTS WHERE 1 1/2 INCH AND LARGER CONDUITS TERMINATE, WHERE NO. 4 AND LARGER CONDUCTORS ARE INSTALLED, AND WHERE REQUIRED BY NEC. DO NOT USE RUNNING THREADS. LEAVE NO. 12 PULL WIRE (IDENTIFIED AT BOTH ENDS) IN ALL EMPTY RACEWAYS. PROVIDE PLASTIC INSULATING BUSING ON ALL CONDUIT CONNECTIONS AND FIBER INSERTS ON ALL TUBING CONNECTIONS. SURFACE METAL RACEWAYS, SURFACE WIREMOLD AND SURFACE METAL TROUGHS SHALL BE INSTALLED ONLY WHERE SHOWN ON THE DRAWINGS.
- PROVIDE RIGID GALVANIZED STEEL CONDUITS FOR SERVICE ENTRANCE, PANEL FEEDERS AND ALL MOTOR FEEDERS. THREADLESS FITTINGS, ALL THREAD AND RUNNING THREADS SHALL NOT BE USED. RIGID CONDUITS SHALL BE PROVIDED FOR ALL RACEWAY SYSTEMS RUN UNDERGROUND OR EMBEDDED IN CONCRETE OR SOLID MASONRY. ALL UNDERGROUND CONDUIT SHALL BE PVC AND COMPLY WITH N.E.C.
- ELECTRICAL METALLIC TUBING (EMT) MAY BE USED FOR CONDUITS CONCEALED IN FURRED CEILINGS OR WALLS, RUN EXPOSED IN THE BUILDING, OR EMBEDDED IN HOLLOW MASONRY CONSTRUCTED ABOVE GRADE. EMT FITTINGS SHALL BE FERROUS METAL GALVANIZED OR PLATED TO RESIST CORROSION AND SHALL BE OF THE COMPRESSION-RING TYPE, RAIN-TIGHT AND CONCRETE-TIGHT.
- ALL CONDUITS SHALL BE RIGIDLY SUPPORTED AND SECURELY FASTENED.
- ALL CONDUCTORS SHALL BE RATED 600 VOLTS, AND SHALL BE COPPER WITH TYPE THHN INSULATION. MINIMUM SIZE SHALL BE NO. 12 AND NO. 8, AND LARGER SHALL BE STRANDED. ALL CONDUCTORS SHALL BE COLOR CODED, WITH SIZES THROUGH NO. 10 BEING OF THE SOLID COMPOUND COATING. STRIPES, BANDS OR HASH MARKS WITH RESPECTIVE COLOR CODING MAY BE USED FOR CONDUCTORS NO. 8 AND LARGER. COLOR CODING SHALL BE PHASE A-BLACK, PHASE B-RED, PHASE C-BLUE, NEUTRAL-WHITE, AND GROUND-GREEN.
- MAINS AND FEEDERS SHALL BE RUN CONTINUOUS WITHOUT JOINTS OR SPLICES. BRANCH CIRCUIT SPLICES SHALL BE MADE WITH 3M "SCOTCHLOKS", OR EQUAL. IN PANEL BOARDS AND BOXES, CONDUCTORS SHALL BE NEATLY PLACED IN PHASE GROUPS AND SUPPORTED AWAY FROM ALL ENCLOSURE SIDES. LACING SHALL BE DONE AT INTERVALS NOT GREATER THAN SIX (6) INCHES AND SHALL BE DONE WITH LINEN CORD OR T & B SELF-LOCKING "TY-RAPS", OR EQUAL.
- THE ENTIRE ELECTRICAL SYSTEM AND THE BUILDING STRUCTURE SHALL BE GROUNDED, OR AS INDICATED ON THE DRAWINGS. THE ELECTRIC SERVICE, EQUIPMENT AND ENCLOSURES, CONDUITS AND RACEWAYS, SWITCHES, BREAKERS AND PANELS, MOTORS, CONTROLLERS, LIGHTING FIXTURES AND RECEPTACLES SHALL BE GROUNDED. EACH BRANCH OR POWER CIRCUIT SHALL HAVE AN INDEPENDENT GROUNDING CONDUCTOR WHETHER SHOWN OR NOT, WITH THE EXCEPTION OF LIGHTING SWITCHES.
- CONTRACTOR SHALL INSTALL LABELS ON PANELS AS REQUIRED BY ARTICLE 551 OF THE NATIONAL ELECTRIC CODE.
- ALL INSTALLATIONS SHALL COMPLY WITH ARTICLE 551 OF THE NATIONAL ELECTRIC CODE.

ELECTRICAL SCHEDULE					
MARK	DESCRIPTION	MANUFACTURER	MODEL	SIZE	REMARKS
DS-1	DISCONNECT	CUTLER HAMMER	DH225NRK	400 AMP	NEMA 3R, 1-PHASE, 240 VOLT, FUSED
DS-2	DISCONNECT	CUTLER HAMMER	DH225NRK	400 AMP	NEMA 3R, 1-PHASE, 240 VOLT, FUSED
DP-1	LOAD CENTER	CUTLER HAMMER	BR424L400R	400 AMP	NEMA 3R, 1-PHASE, 240 VOLT, MAIN LUG
DP-2	LOAD CENTER	CUTLER HAMMER	BRA24L400R	400 AMP	NEMA 3R, 1-PHASE, 240 VOLT, MAIN LUG

TABLE NO. 1 VOLTAGE DROP WIRE SIZING GUIDE	
DISTANCE	WIRE SIZE
0' - 95'	#8
95' - 149'	#6
149' - 235'	#4
235' - 298'	#3



ELECTRICAL LEGEND

- = SWITCH LEG
- = PHASE LEG
- = NEUTRAL LEG
- = GROUND
- = PROPOSED DISCONNECT

DS & DP INSTALLATION DETAIL
 NO SCALE