

5421

Kietzke Ln | SUITE 100
RENO, NV 89502

OFFICE
FOR LEASE



DOMINIC BRUNETTI, CCIM

PRINCIPAL
775.240.1192 **CELL**
dbrunetti@dicksoncg.com
S.58419

PATRICK RIGGS

VICE PRESIDENT, OFFICE
775.220.4957 **CELL**
priggs@dicksoncg.com
S.180878



5421

Kietzke Ln | SUITE 100
RENO, NV 89502



ABOUT THE PROPERTY

- Premier Class A professional office space located in Reno's Meadowood submarket.
- Ground floor suite with direct access off the main lobby.
- Floor to ceiling windows providing natural light throughout.
- Located on Kietzke Lane in close proximity to Interstate-580 and walking distance to The Village @ Rancharra
- Ample parking for a variety of professional office uses.
- Neighboring new office development



Lease Rate | \$3.00 SF FSG

Office Size | 3,012 SF

Year Built | 2005

Zoning | SPD (OFFICE)
ALL - SPECIFIC PLAN DISTRICT

APN | 040-971-05

SITE MAP



FIRST FLOOR

5421
KIETZKE LANE
SUITE 100



AREA MAP NORTH

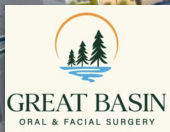


PEPPERMILL
RENO

Atlantis
CASINO RESORT • RENO



MEADOWOOD MALL®
A SIMON MALL



5421
KIETZKE LANE

5421 KIETZKE LANE
POPULATION



3 miles
67,972

5 miles
158,312



SUITE 100



SUITE 100





FLOOR PLAN

SUITE 100

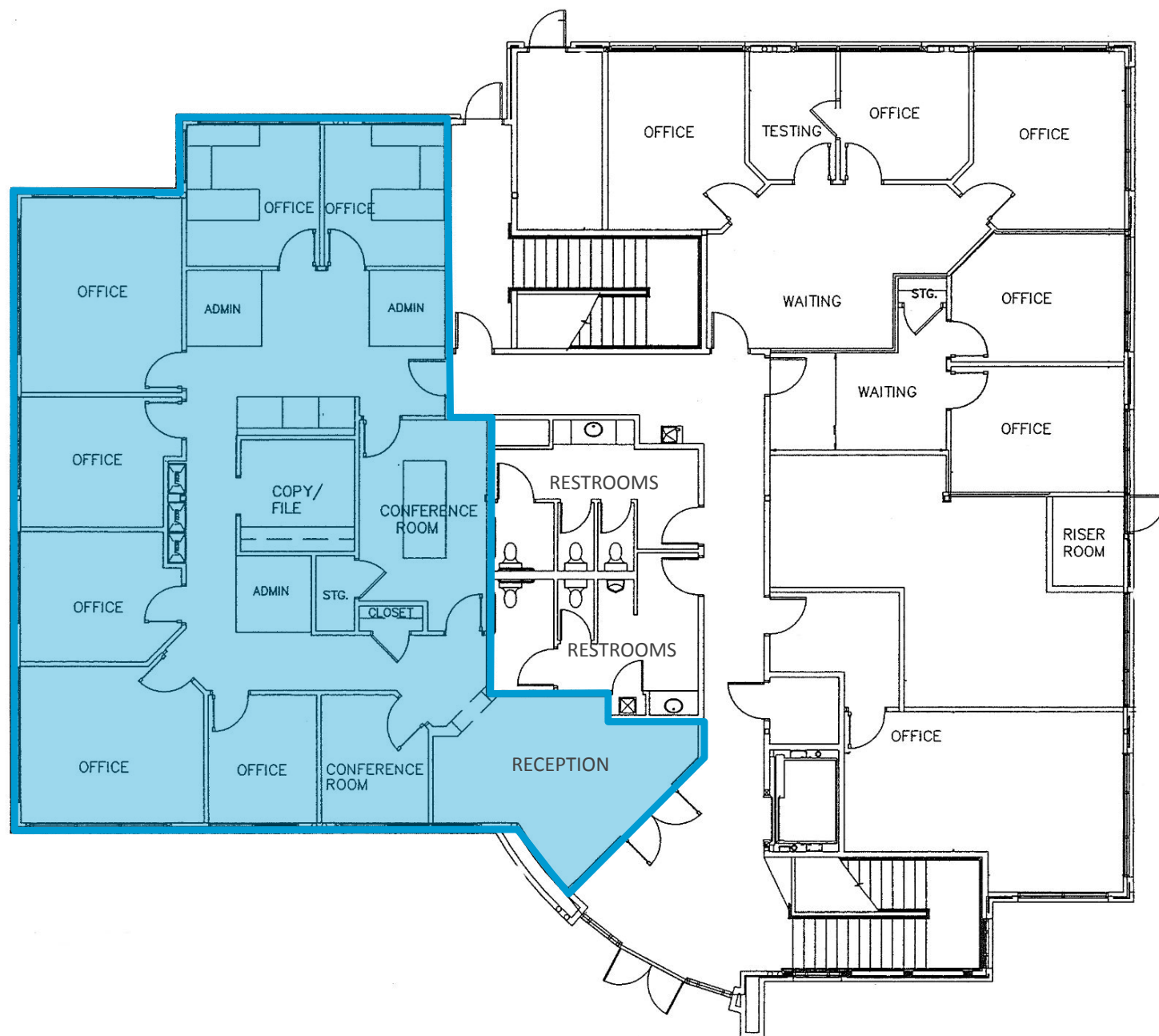
3,012 SF

7

OFFICES

2

CONFERENCE ROOMS



NORTHERN NEVADA A SMART CHOICE FOR GROWTH



HOME TO INDUSTRY GIANTS

Ranked in TOP 10 states
for best business tax
climate and business
incentives.



19K
UNDERGRADUATE
STUDENTS

23K
TOTAL
STUDENTS

4K
GRADUATE
STUDENTS

RI - University for Research by Carnegie Classifications



20 MINUTES
TAHOE RENO
INDUST. CENTER



"Super-Loop"
Fiber Network
IN PROGRESS



America's
DATA & TECH
Growth Frontier



22 MINUTES
Commute Time



3.5 HOURS
TO BAY AREA



2 HOURS
TO SACRAMENTO



NEVADA LITHIUM LOOP
Closed-loop system for lithium
extraction, processing, and
battery material recycling to
support sustainable domestic
EV supply chains.



WORKFORCE DEVELOPMENT

- Lowest labor costs in the Western U.S.
- 35K+ students at UNR & TMCC
- 10-year surge in manufacturing jobs
- MSA population growing 1.4% annually

Nevada is the 6th **fastest-growing state in the nation**,
according to the latest *U.S. Census* data.

– U.S. Census Bureau (2025)

Recognized by *US News* for being the No. 7
across the nation for Business Environment.

– US News (2024)



Business Assistance Programs



Sales, Use &
Modified
Business Tax
Abatements



Incentives for
Equipment,
Property &
Recycling



Specialized
Programs for
Data Centers and
Aviation

Opportunity Zones

Northern Nevada offers multiple federally designated Opportunity Zones, supporting long-term investment and development.

Qualified Opportunity Zone investments offer:



Deferred capital gains



Step-up in basis



Permanent exclusion of qualifying gains

Nevada Tax Climate

Nevada's tax structure is designed for business success:

NO

Corporate or Personal Income Tax
Inventory or Franchise Tax
Capital Gains or Inheritance Tax

One of the most competitive tax climates in the U.S., ranked among the best for business.



NORTHERN NEVADA TOP COMPANIES

5.4M SF

Tesla Gigafactory

1.3M SF

7.2M SF Planned
Switch Campus



ORMAT



STATE OF
NEVADA



switch



CAESARS
ENTERTAINMENT.



INSURANCE



AMERCO



SNC
SIERRA
NEVADA
CORPORATION



Renown
HEALTH



its
logistics



MONARCH
CASINO RESORT SPA • BLACK HAWK



TAX COMPARISONS

	NV	CALIFORNIA	ARIZONA	UTAH	IDAHO	OREGON	WASHINGTON
state corporate income tax	NO	8.84%	4.9%	4.85%	6.5%	6.6%	NO
individual income tax	NO	<13.3%	<2.5%	4.55%	5.695%	<9.9%	NO
payroll tax	>1.17%	>1.5%	NO	NO	NO	>.9%	.92%
capital gains tax	NO	<13.3%	<2.5%	4.55%	5.695%	<9.9%	7-9.9%



DOMINIC BRUNETTI, CCIM

775.850.3109 **OFFICE**
dbrunetti@dicksoncg.com
S.58419

PATRICK RIGGS

775.220.4957 **CELL**
priggs@dicksoncg.com
S.180878

**Sourced from credible sources, the broker cannot guarantee the reliability of the information provided. No explicit or implied warranties or representations are made regarding the accuracy of the information. This content is subject to potential vulnerabilities, such as errors, omissions, price fluctuations, rental terms, and other conditions, including prior sale, lease, financing, or unexpected withdrawal. You and your advisors should thoroughly assess the property to ascertain its suitability for your specific needs. Additionally, we strongly recommend seeking guidance from your legal, financial, or other qualified professional advisors.*

333 Holcomb Ave., Ste. 300 | Reno, Nevada 89502 | **775.850.3100** | **dicksoncg.com**

CORFAC
INTERNATIONAL

RIETZKE LANE