

# 6260 MANGO AVE. FONTANA | CA

**DAUM**  
COMMERCIAL REAL ESTATE SERVICES



PROPERTY HIGHLIGHTS



**113,930 SF**  
FREESTANDING CLASS A  
DISTRIBUTION BUILDING



**32'**  
CLEAR HEIGHT



**19**  
DOCK DOORS



**TBD AMPS – EXPANDABLE**

CONTACTS

For More Information, Contact:

**NOAH SAMARIN**  
EXECUTIVE VICE PRESIDENT  
P: 909.912.0007  
nsamarin@daumcre.com  
CA License #01755814

**DAVID GORES**  
VICE PRESIDENT  
P: 909.652.9059  
dgores@daumcre.com  
CA License #01502471

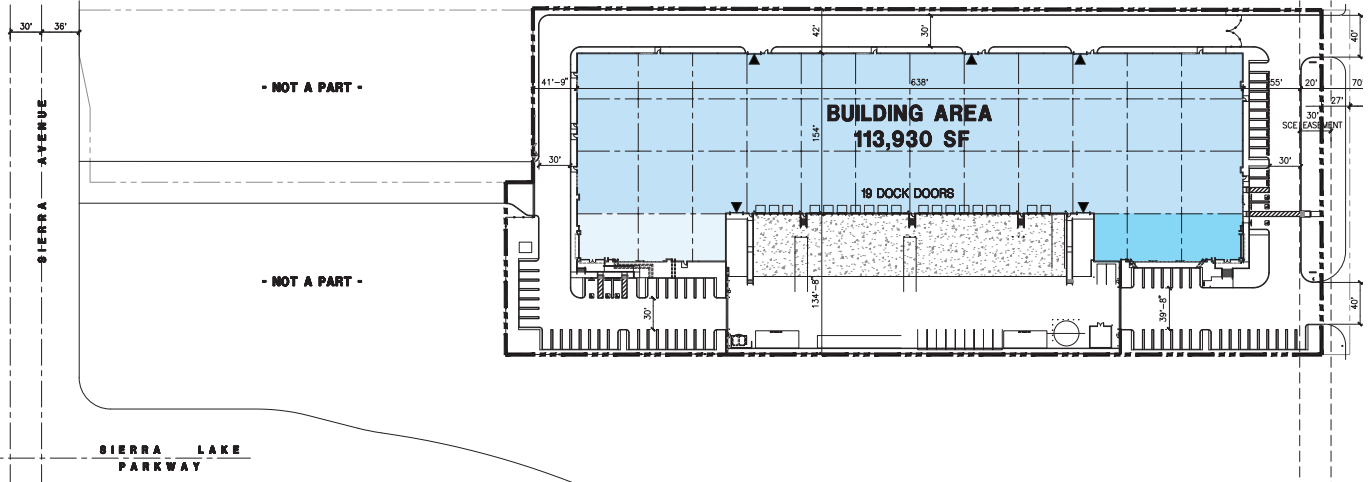
**GARY WOMACK**  
VICE PRESIDENT  
P: 909.652.9041  
gwomack@daumcre.com  
CA License #00795648

FOR LEASE

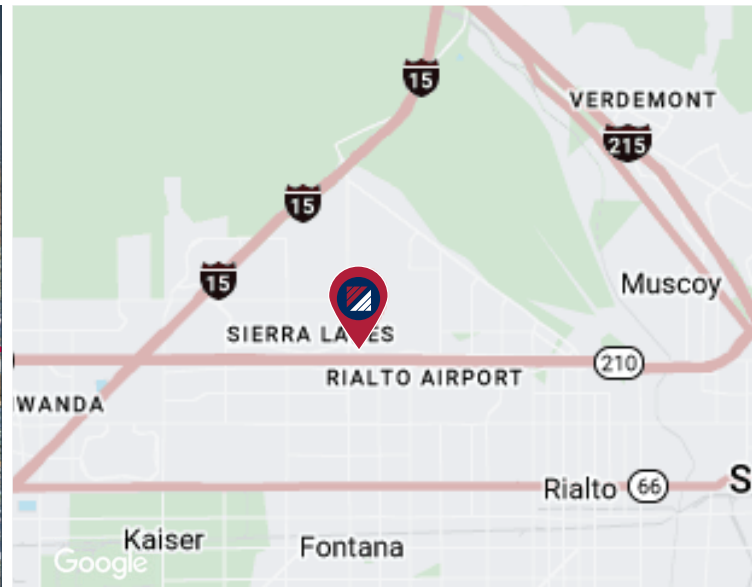
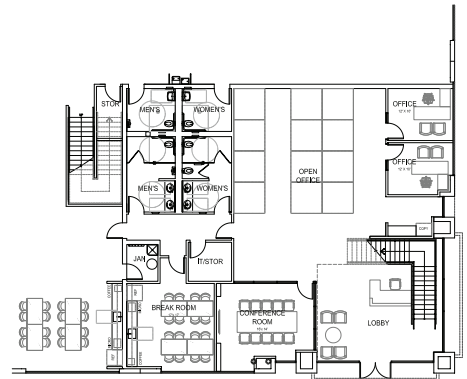
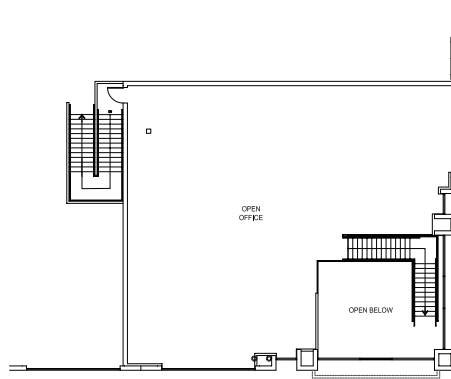
# 6260 MANGO AVE.

FONTANA | CA

# FOR LEASE



**CONCEPTUAL FLOOR PLAN**  
 GROUND LEVEL = 3,332 SF  
 MEZZANINE = 2,830 SF  
 -----  
**6,162 SF TOTAL**





# 6260 MANGO AVE. FONTANA | CA

# FOR LEASE

