

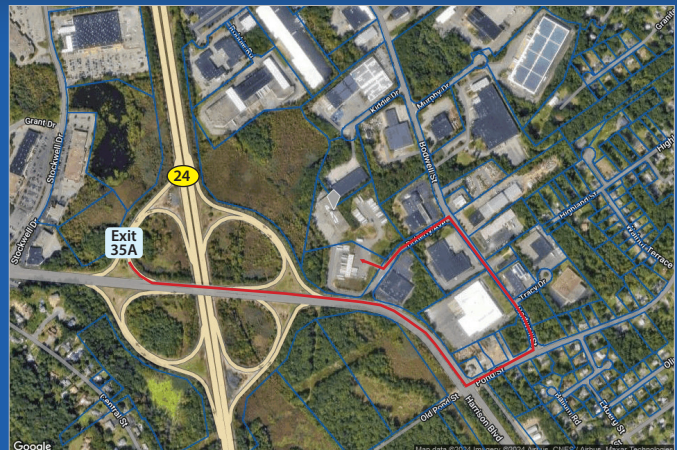
# FOR SUBLEASE

*27 Doherty Ave., Avon, MA*

20,000 SF Warehouse w/ Outside Storage

RADER PROPERTIES, INC

781-681-9000

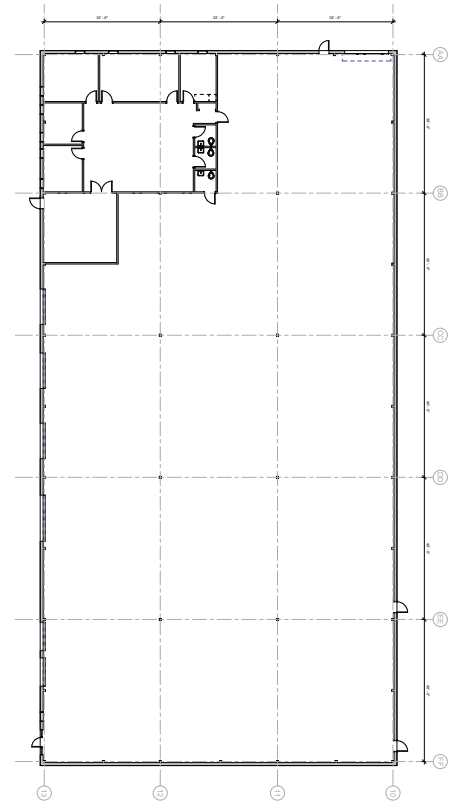




27 Doherty Ave.,  
Avon, MA  
20,000 SF  
w/ Outside Storage

## SPECIFICATIONS

- Location:** Located in the established Avon Industrial Park just off Route 24
- Building Size:** 32,000 SF, single-story
- Available Space:** 20,000 SF / 18,500 SF Warehouse / 1,500 SF Office
- Outdoor Space:** 6,000 SF of fenced outdoor storage area
- Clear Height:** 21' clear
- Loading:** Five (5) tailboard docks  
One (1) ground-level doors
- Column Spacing:** 30' x 40'
- HVAC:** Gas-fired unit heaters throughout warehouse
- Power:** 200 amps, 120 amps/240 volt
- Fire Sprinkler:** 100% wet system
- Lighting:** T5 motion sensors
- Parking:** Ample Parking



### EXCLUSIVE SUBLEASE AGENT:

**Rader Properties, Inc.**

David Mitchell 781-681-9000 Ext. 20

Jim Rader 781-681-9000 Ext.13

# RADER PROPERTIES, INC

## 781-681-9000

*For more information or to schedule a building tour contact:*

**David Mitchell**, davidmitchell@raderproperties.net or **Jim Rader**, jrader@raderproperties.net

80 Washington Street, Building J-40, Norwell, MA 02061 • www.raderproperties.net