

For Sale

W. 2nd St. & Washington St.



[Click for a Virtual Tour](#) 

690 W. 2nd St.
Reno, NV 89503

Michael Keating, SIOR
Partner
775.386.9727
mkeating@logicCRE.com
S.0174942

Michael Dorn
Senior Associate
775.453.4436
mdorn@logicCRE.com
S.0189635

Listing Snapshot



\$1,250,000
Sale Price



± 3,828 SF
Total Square Footage



\$327 PSF
Price Per Square Foot

Property Highlights


- Two-Story office building in Downtown Reno
- Easy access to Hwy. 80
- Situated on high-traffic W. 2nd St.
- Ability to owner occupy
- MD-PD Zoning
- One (1) space parking garage
- Includes seven (7) parking spots in the back
- APN: 011-018-20
- Surrounded by newly developed multifamily

Demographics

	1-mile	3-mile	5-mile
2025 Population	19,816	135,097	238,357
2025 Average Household Income	\$84,803	\$91,448	\$101,480
2025 Total Households	11,024	58,874	100,005





 Multifamily

THE MONTAGE RENO

± 370 Rooms


 Multifamily

245 NORTH ARINGTON

 Multifamily

the MOD at Riverwalk

Downtown Reno

 Multifamily

EDEN TOWER APARTMENTS

 Multifamily

Truckee River Terrace APARTMENTS

SUBJECT

± 3,828 SF

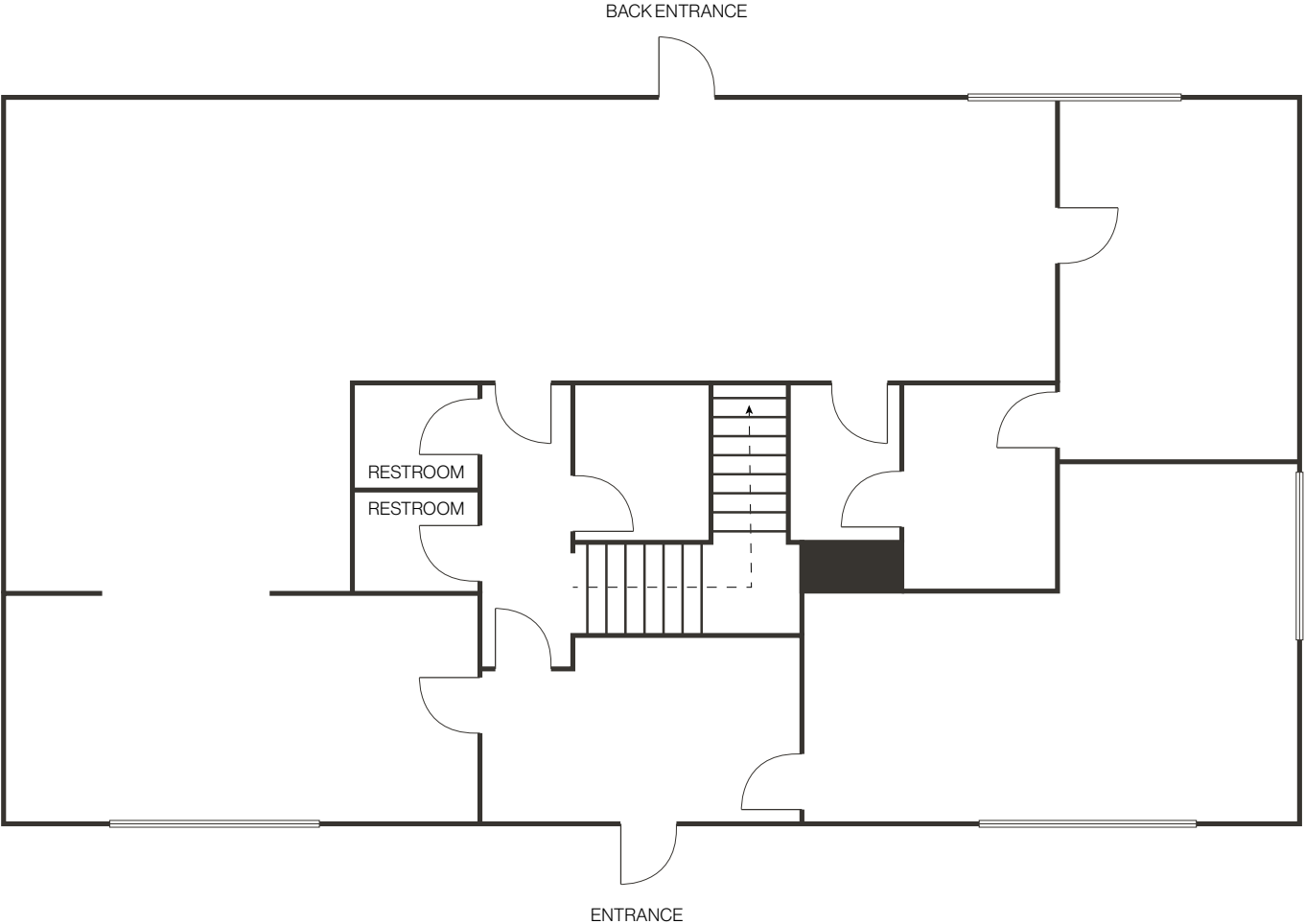
 Future Development

Future Multifamily Development

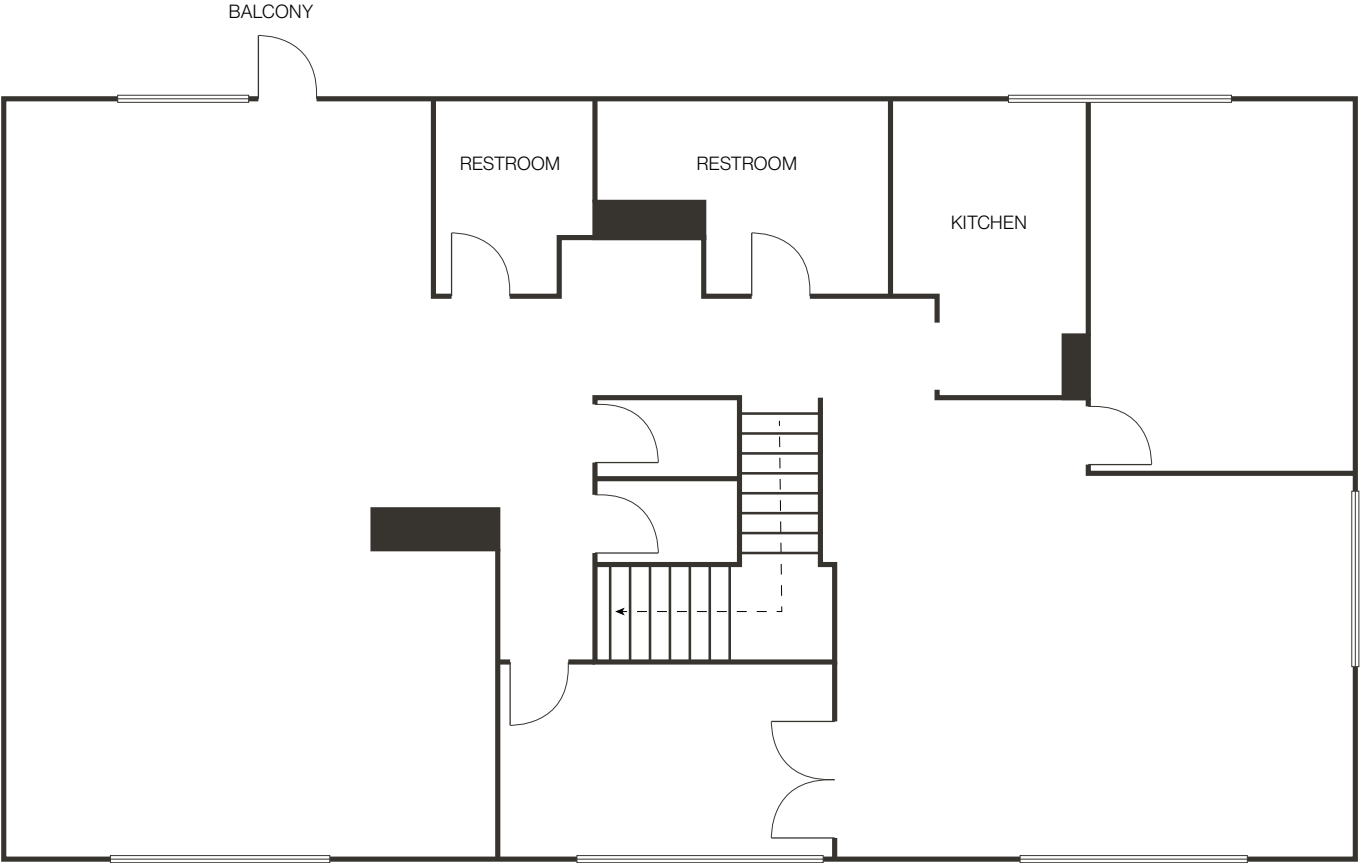
W. 2nd St. / 3,650 CPD

Washington St.

Floor Plan | First Floor



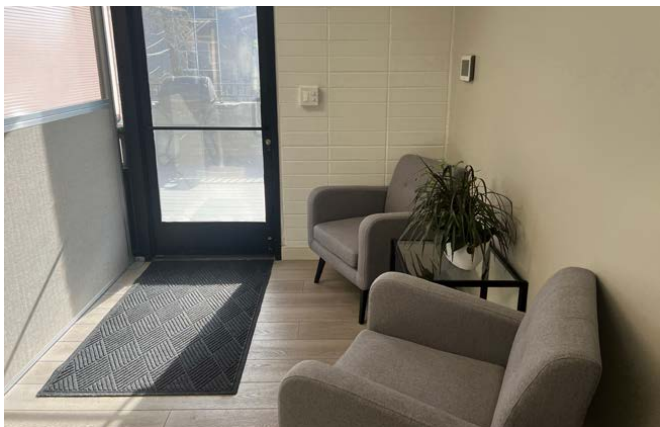
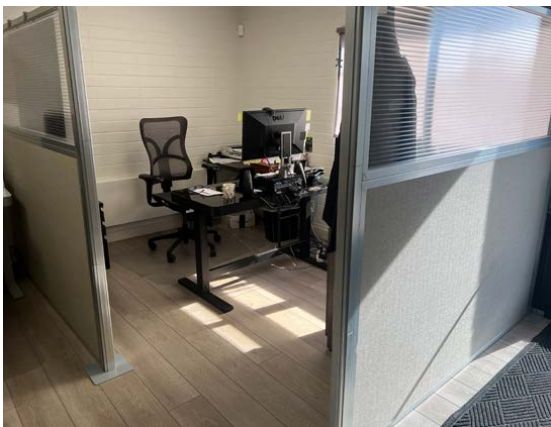
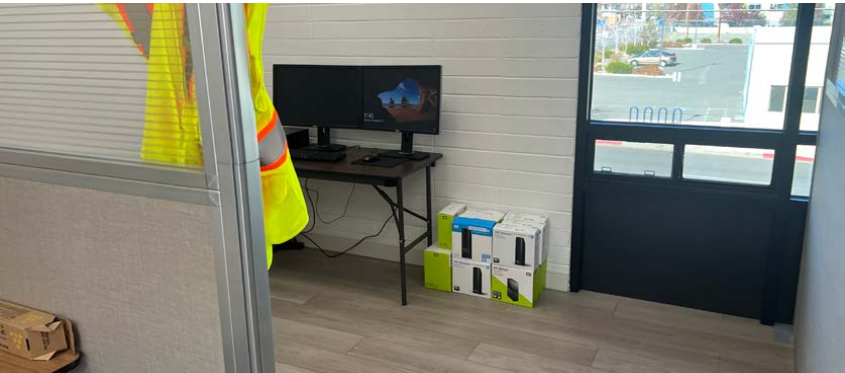
Floor Plan | Second Floor



Property Photos



Property Photos



LOGIC Commercial Real Estate

Specializing in Brokerage and Receivership Services



Join our email list and
connect with us on LinkedIn

The information herein was obtained from sources deemed reliable; however LOGIC Commercial Real Estate makes no guarantees, warranties or representation as to the completeness or accuracy thereof.

For inquiries please reach out to our team.

Michael Keating, SIOR

Partner
775.386.9727
mkeating@logicCRE.com
S.0174942

Michael Dorn

Senior Associate
775.453.4436
mdorn@logicCRE.com
S.0189635