

Available Medical Office Space for Lease

Memorial Medical Office Building

100 EAST 33RD STREET, VANCOUVER, WA 98660



For leasing information:

Lael Crompton

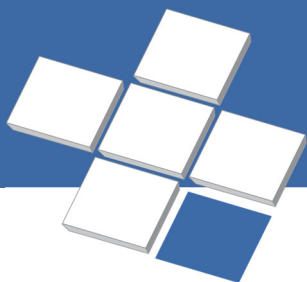
Director, Leasing

Phone: 858-794-1900

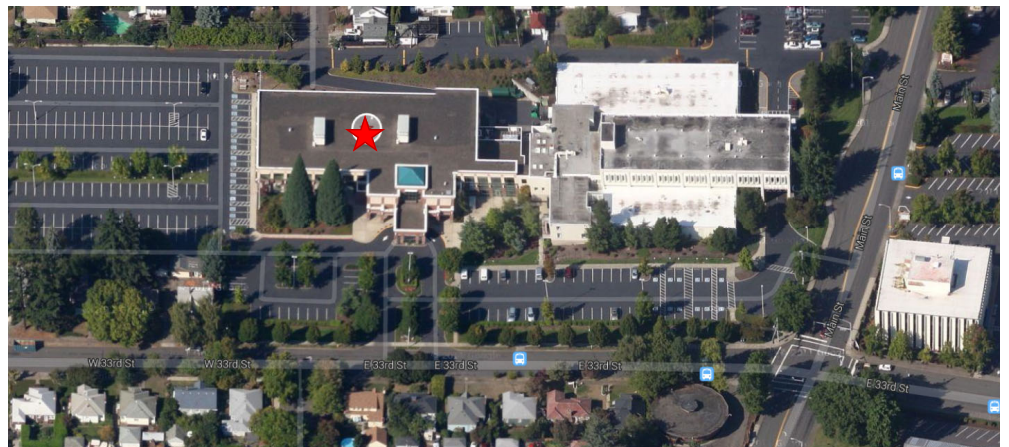
lcrompton@pmbres.com

www.pmbres.com

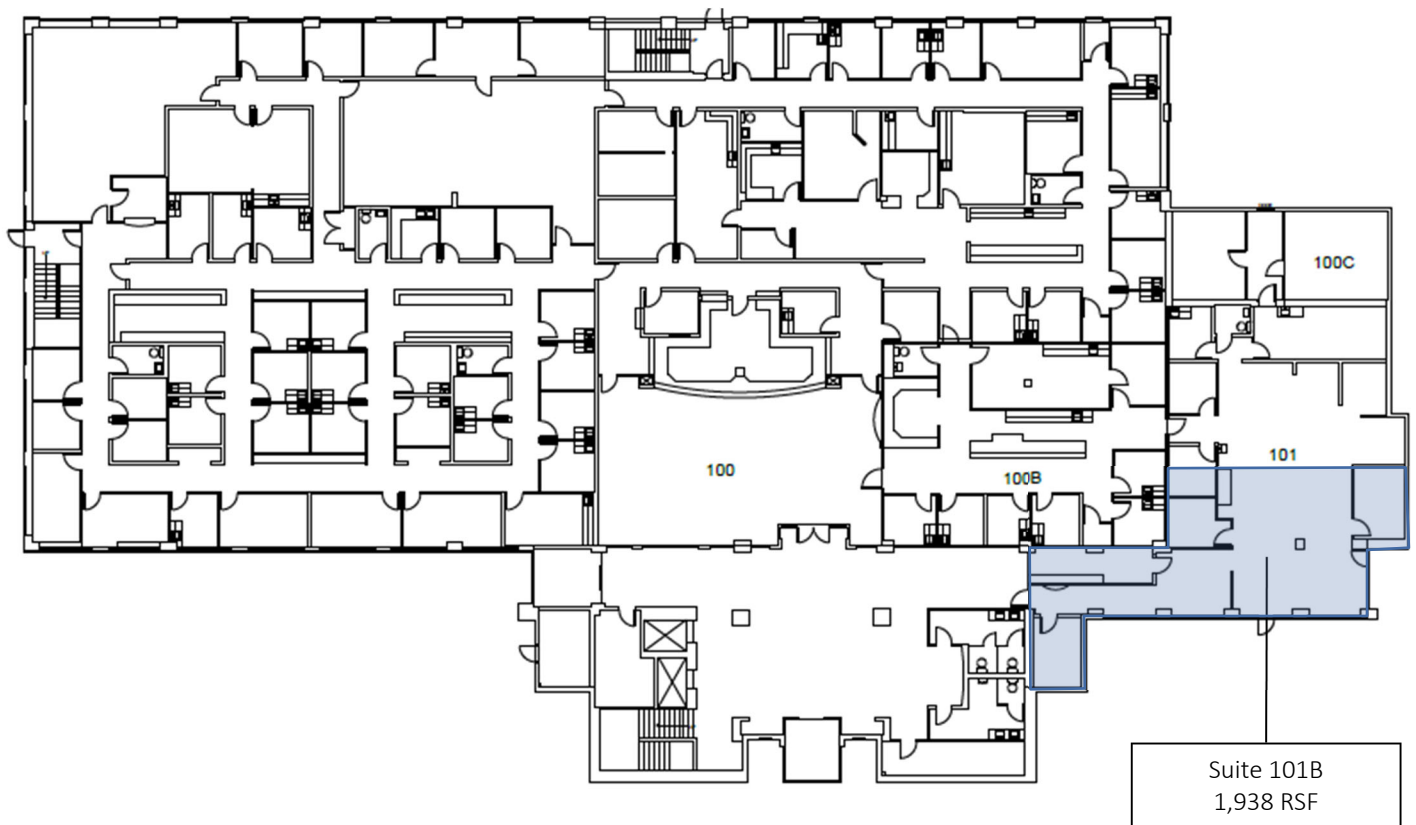
- Connected to PeaceHealth Southwest Memorial Health Center
- Easy access to freeways and public transportation lines
- Conveniently located in downtown Vancouver
- Ample free parking for staff and clients
- Active management team with dedicated maintenance staff



PMB
Real Estate Services
Real Estate Management Solutions for Healthcare



First Floor Availabilities



Second Floor Availabilities

Suite 206B
± 4,787 RSF / ± 3,933 USF
Divisible to
± 972 RSF / ± 803 USF

