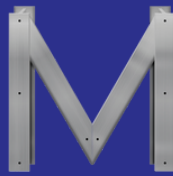


MERCER
COMMERCIAL



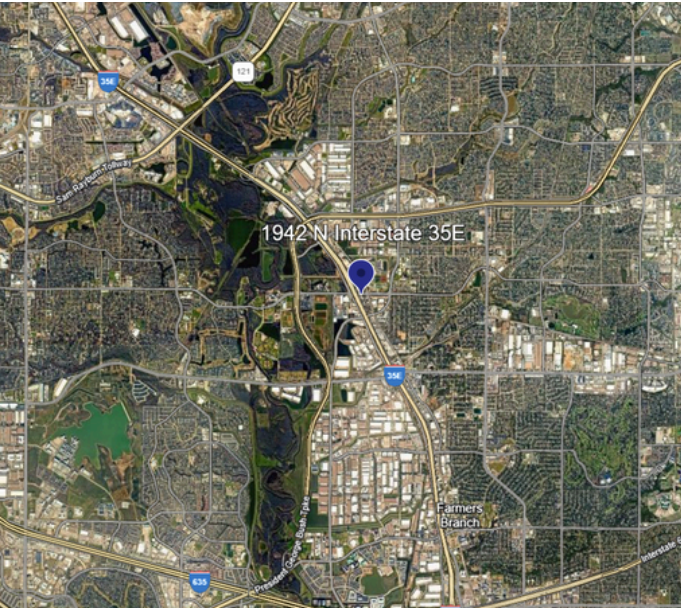
COMPANY
REAL ESTATE

SALE & LEASE



AVAILABLE: 8,352 SF

1942 N INTERSTATE 35 E, CARROLLTON, TX 75006



PROPERTY FEATURES

- Available SF: 8,352
- Office SF: 3,000
- 14' Clear Height
- 1 Grade Level Door
- Highway Frontage

KEENAN COOK, SIOR

Senior Vice President

(214) 814-5876

kcook@mercerc-company.com

MICHAEL HEIDELBAUGH

Associate

(972) 595-8483

michaelh@mercerc-company.com

AVAILABLE: 8,352 SF

1942 N INTERSTATE 35 E, CARROLLTON, TX 75006



KEENAN COOK, SIOR
Senior Vice President
(214) 814-5876



MICHAEL HEIDELBAUGH
Associate
(972) 595-8483

The information contained herein has been given to us by the owner of the property or other sources we deem reliable. We have no reason to doubt its accuracy, but we do not guarantee it. All information should be verified before purchase or lease.

Mercer Company
2461 N Stemmons Fwy, Dallas, TX 75207

mercerc-company.com