



2650 ST. CLAIR AVENUE WEST

DUNPARHOMES.COM





Elevate Your Business at a Reinvented Toronto Landmark

Discover the flexibility of a beautifully repurposed brick-and-beam office, showroom, or retail space.

2650 St. Clair Avenue West is ideally located steps from The Junction, Stockyards District, and Bloor West Village, which are three of Toronto's most rapidly transforming neighbourhoods. With soaring ceilings, abundant natural light, and polished concrete floors, every detail inspires growth and creativity for your business.

Rooted in Dunpar Homes' legacy of architectural distinction this address blends timeless craftsmanship and forward-thinking design, creating a foundation for your next chapter of success.





2650 St. Clair Avenue West at a Glance

Property Type:

- Ground Level: Showroom & Retail
- Second Level: Office

Community: Rockcliffe-Smythe

Building Size: 77,430 sq.ft

Key Features: Elevator, polished concrete floors, multiple washrooms, open concept

HVAC: Fully air-conditioned, forced-air (natural gas)

Water: Municipal





Key Features

Polished concrete floors

Architecturally restored brick-and-beam details

Grand, open-concept space ideal for retail, showroom, event space, or office use

Elegantly designed restrooms

Elevator access

Surface parking

Abundant natural light fills the space through windows and skylights

High, open-concept ceilings

Modern infrastructure

Where your business belongs.

Natural light. Architectural distinction. Transit at your doorstep. 2650 St. Clair Avenue West is where your team does their best work and where your clients take notice.

Brilliantly Connected

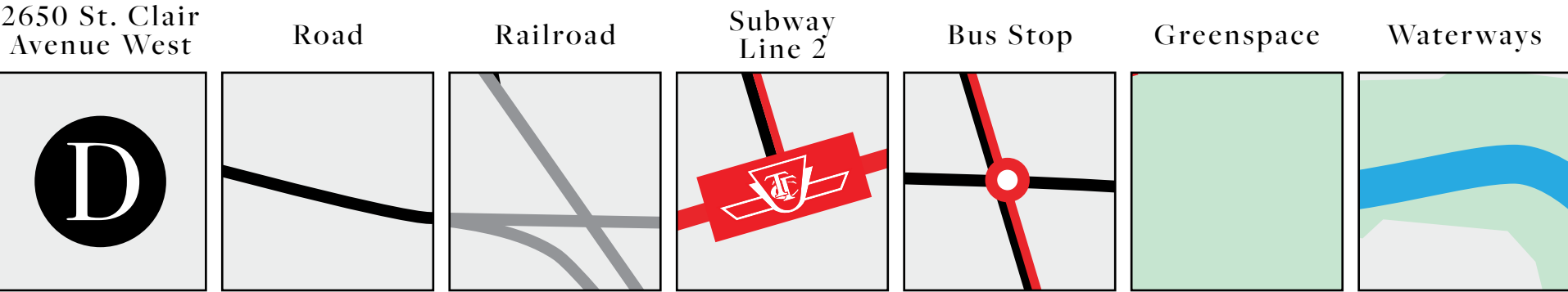
Situated in Rockcliffe-Smythe, just west of Jane St., this landmark property is moments from transit connections and highways, putting the entire city within easy reach.

Walking distance to local shops and restaurants on Bloor

Quick access to streetcar and bus routes at the front door

Close to Junction, High Park, and Bloor West Village

Clustered near growing creative and retail businesses



- | | | |
|--------------------------|---------------------------------|-------------------|
| 1 High Park | 9 F45 Training | 17 Metro |
| 2 The Stockyards | 10 Summer Hill Market | 18 Messina Bakery |
| 3 Bloor retail corridor | 11 Lambton Golf & Country Club | 19 Monte Bakery |
| 4 Junction neighbourhood | 12 Lambton Woods | 20 Gigli Cafe |
| 5 Loblaws | 13 Scarlett Woods Golf Course | 21 Esso |
| 6 Walmart Supercentre | 14 Tracer Golf Indoor Simulator | 22 Shape Fitness |
| 7 Starbucks | 15 Earls court Park | |
| 8 Tim Hortons | 16 Jean Sibelius Park | |

2 minutes to
The Stockyards
Shopping Centre

3 minutes to
Lambton Golf
& Country Club

3 minutes to
Starbucks



Floorplans Designed for Flexibility

Customizable, open-plan floorplans

Fully air-conditioned

Forced air (natural gas) heating

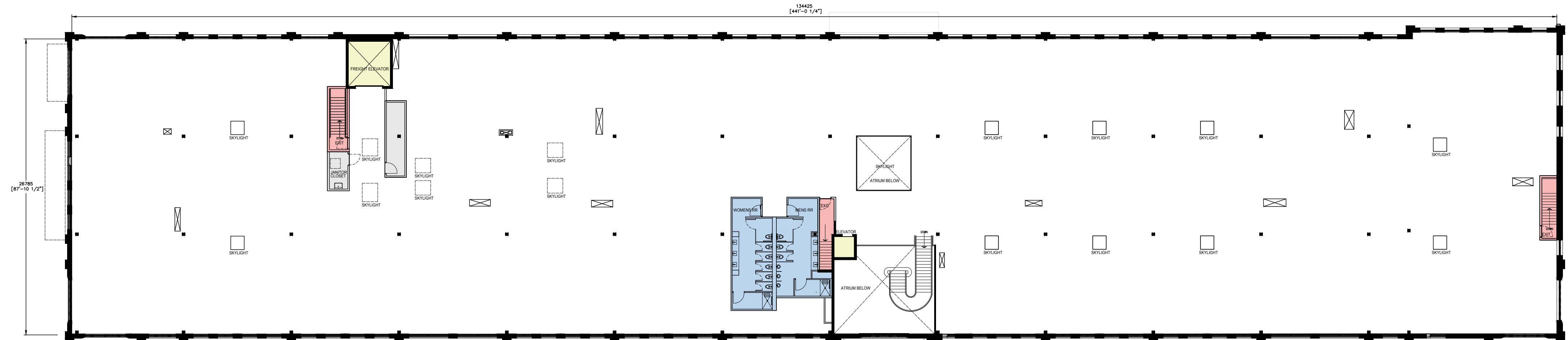
Municipal water

Elevator for enhanced accessibility

Ideal for retail, showroom, office,
or event space use

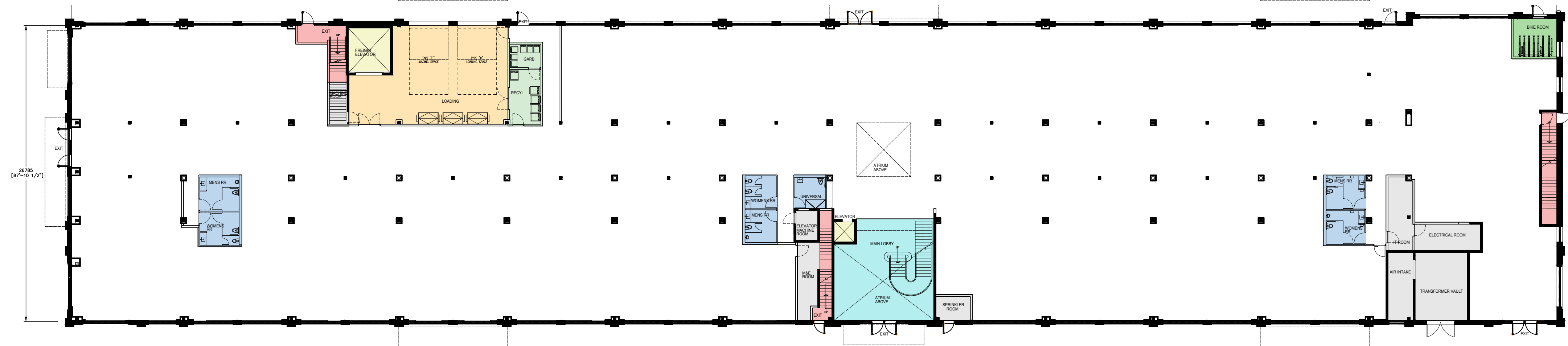
2nd Floor

Total (Interior) Area
= 3,596.63 m² (38,715.07 sq.ft.)



Ground Floor

Total (Interior) Area
= 3,596.63 m² (38,715.07 sq.ft.)





Showcasing the Details

At 2650 St. Clair Avenue West, you can experience a space where every detail speaks to both history and modern inspiration. The building's authentic finishes transform work and retail environments into something extraordinary that offers character, artistry, and light in every corner.

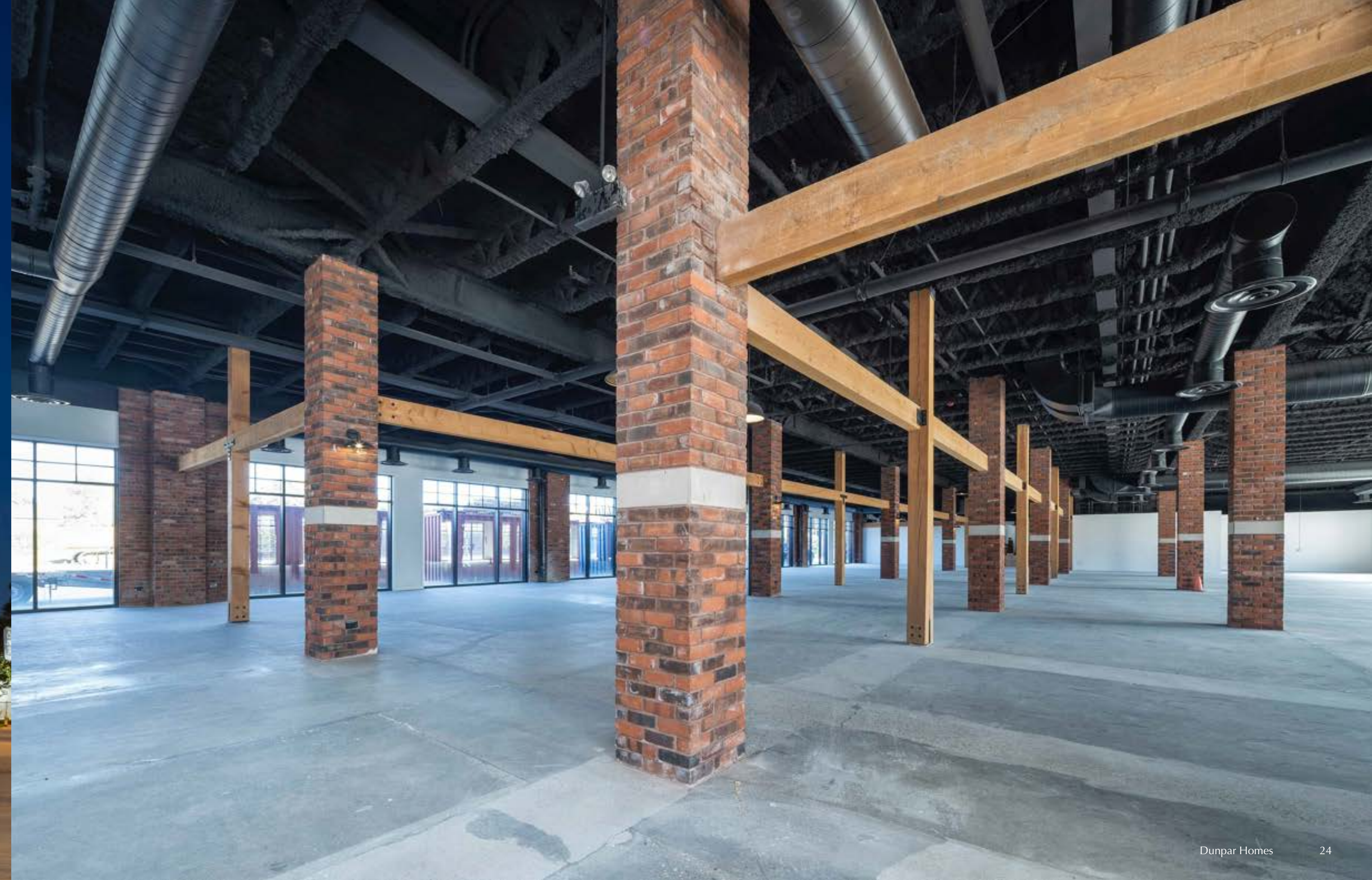
Exposed brick and
wooden beams

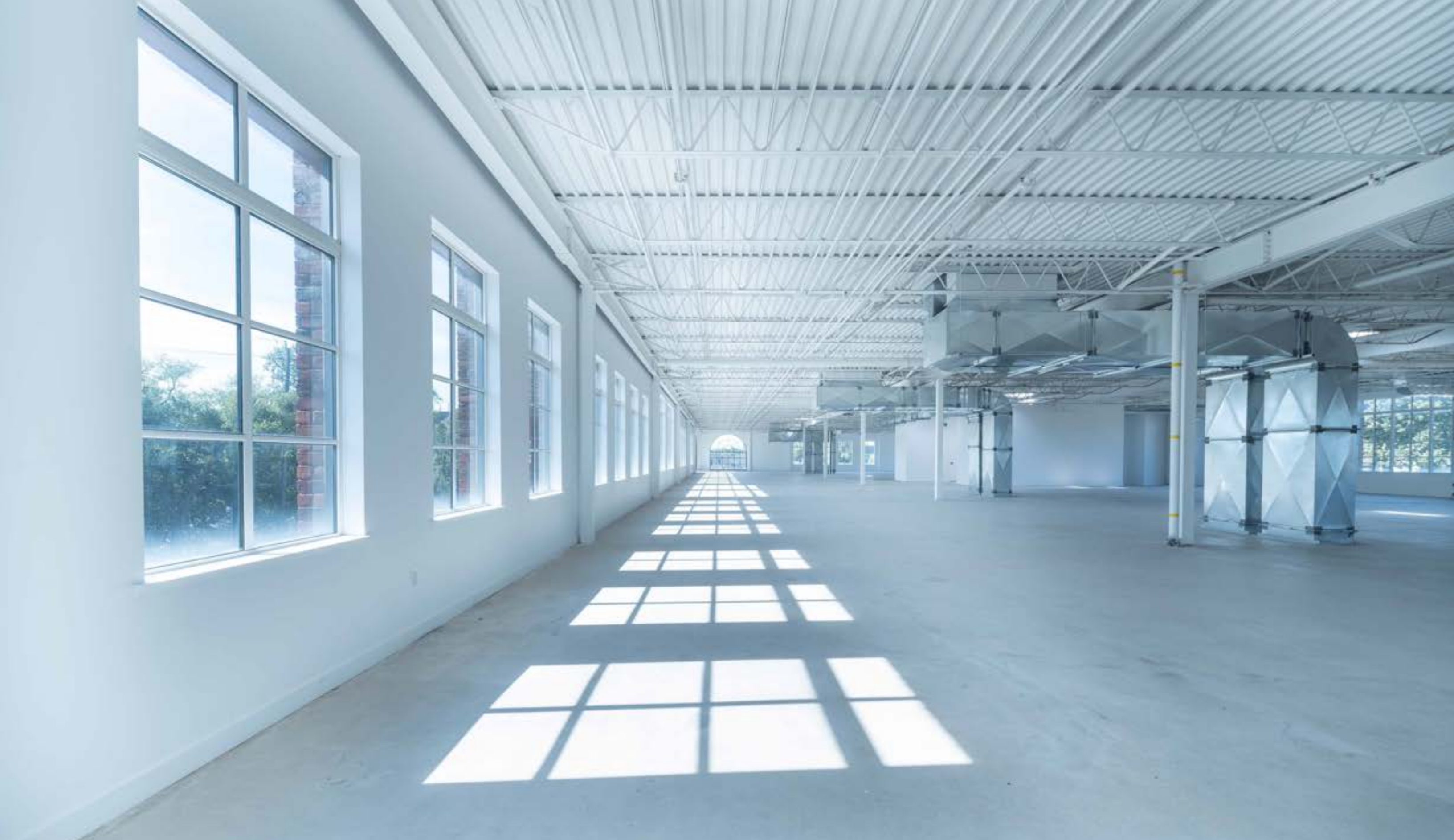
Expansive windows

Skylights and
feature lighting

Natural light
from all angles







2650 ST. CLAIR
AVENUE WEST

by

D

D U N P A R

BETTER BY DESIGN

Contact

Cynthia Patricia Del Peschio

416-318-9112 | c.delpeschio@dunpar.ca

40⁺DUNPAR
FOUNDED IN 1981

2650 St. Clair Avenue West
DUNPARHOMES.COM

