



5224 W. Tuscarawas St
Canton, Ohio 44708

AVAILABLE SF	4,480
MONTHLY RATE	\$1,866.67 + utilities
ZONING	B2
OVERHEAD DOORS	(2) 10' x 12'
TOWNSHIP	Perry

Property Highlights

- Warehouse with office space and restroom.
- Located on W Tuscarawas between Canton and Massillon.
- No automotive repair or autobody work permitted.
- Broker/Owner Interest

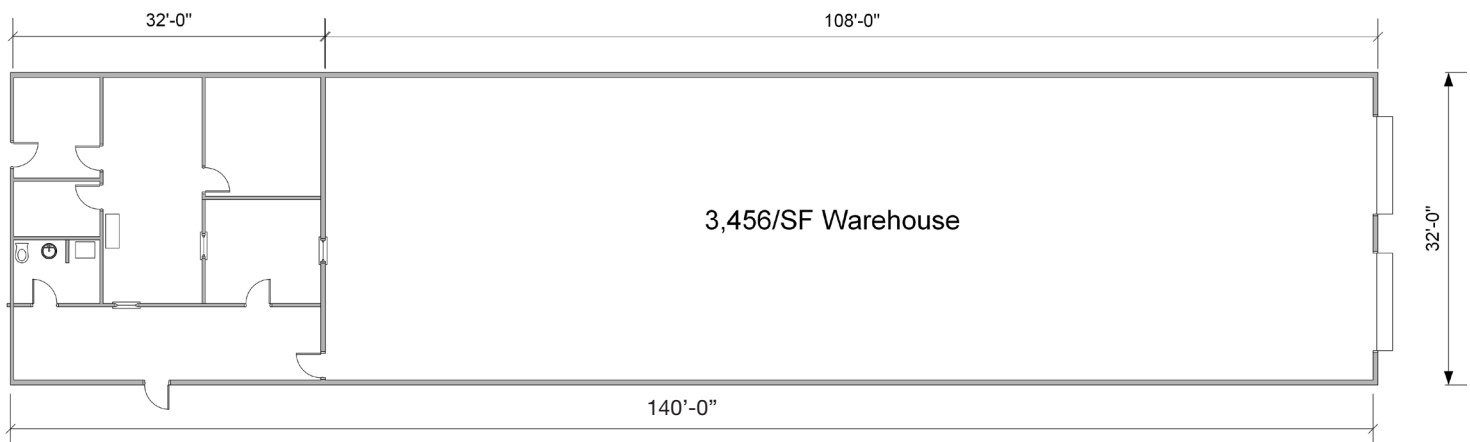
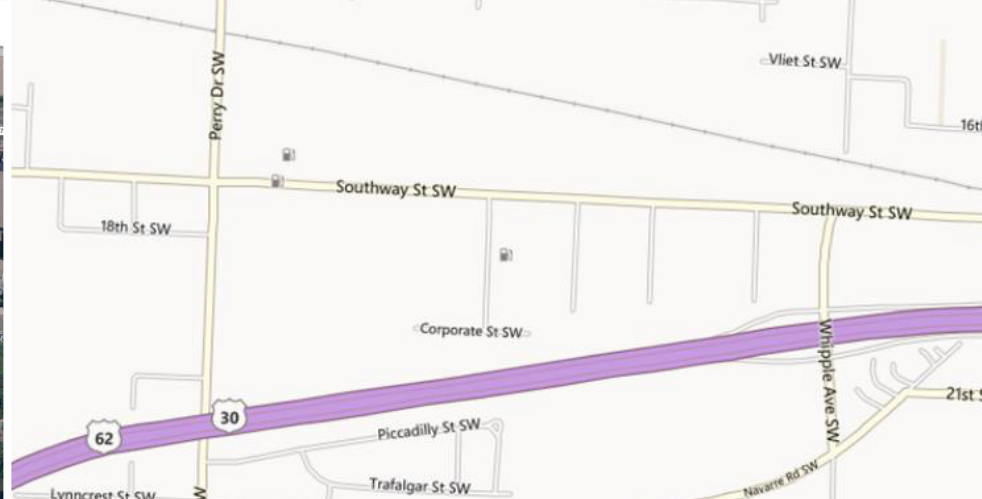
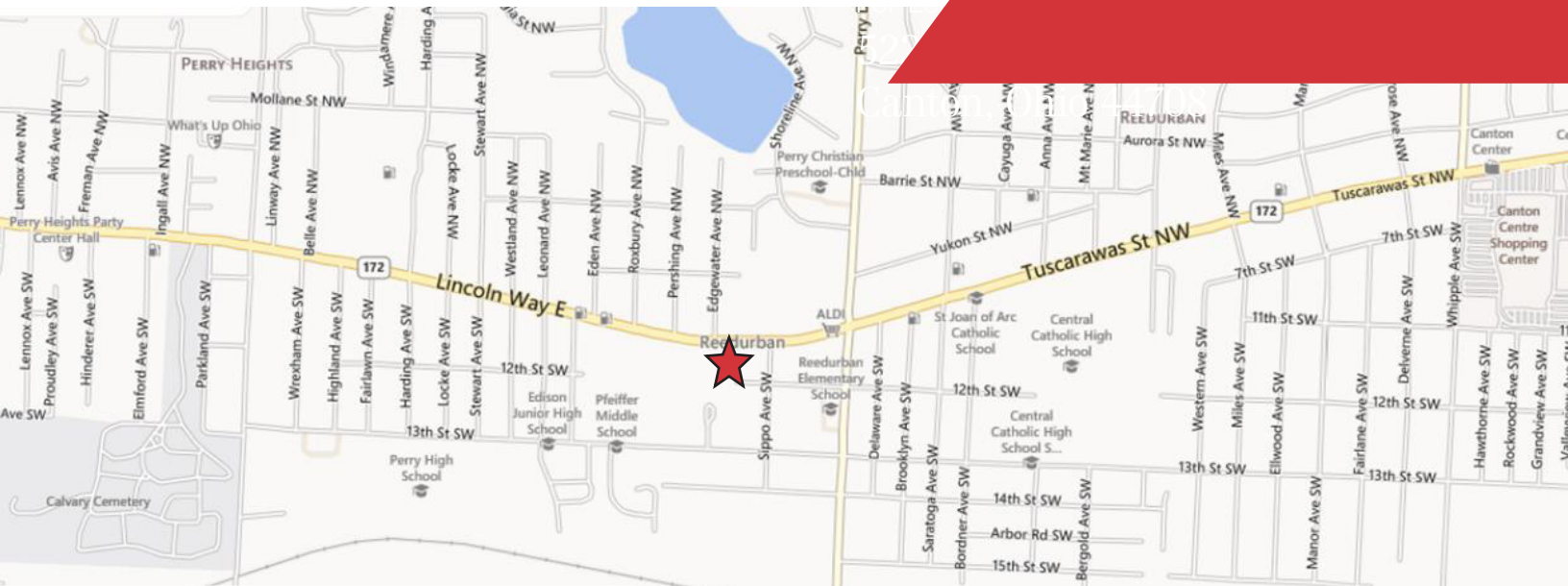
Dan Spring, SIOR

P 330 497 6249
dan@naispring.com

Kelly Sober, CCIM

P 330 497 9837
kelly@naispring.com

For Lease Industrial Warehouse



NO WARRANTY OR REPRESENTATION, EXPRESS OR IMPLIED, IS MADE AS TO THE ACCURACY OF THE INFORMATION CONTAINED HEREIN, AND THE SAME IS SUBMITTED SUBJECT TO ERRORS, OMISSIONS, CHANGE OF PRICE, RENTAL OR OTHER CONDITIONS, PRIOR SALE, LEASE OR FINANCING, OR WITHDRAWAL WITHOUT NOTICE, AND OF ANY SPECIAL LISTING CONDITIONS IMPOSED BY OUR PRINCIPALS NO WARRANTIES OR REPRESENTATIONS ARE MADE AS TO THE CONDITION OF THE PROPERTY OR ANY HAZARDS CONTAINED THEREIN ARE ANY TO BE IMPLIED.

8234 Pittsburg Ave NW
North Canton, OH 44720
+1 330 966 8800
naispring.com