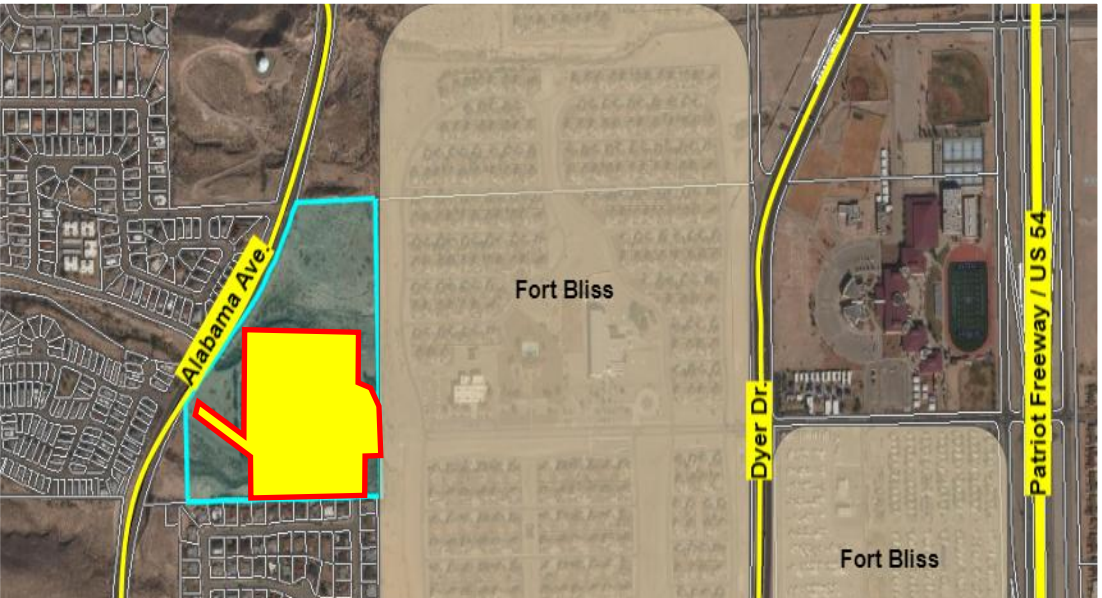


# 7000 ALABAMA

27,600 square foot office building and a 54,459 square foot warehouse, on 24.5 (+/-) acres of land. It is located in central Northeast next to Fort Bliss, US Highway 54 and SPUR 601.

**Total Acreage: 24.5 acres +/-**  
**Improved Square feet: 82,059 sqft**  
**Property Zoning: C-3 (Commercial)**



7000 Alabama St



Fort Bliss Museum  
Temporarily closed



Fort Bliss

Memorial Park



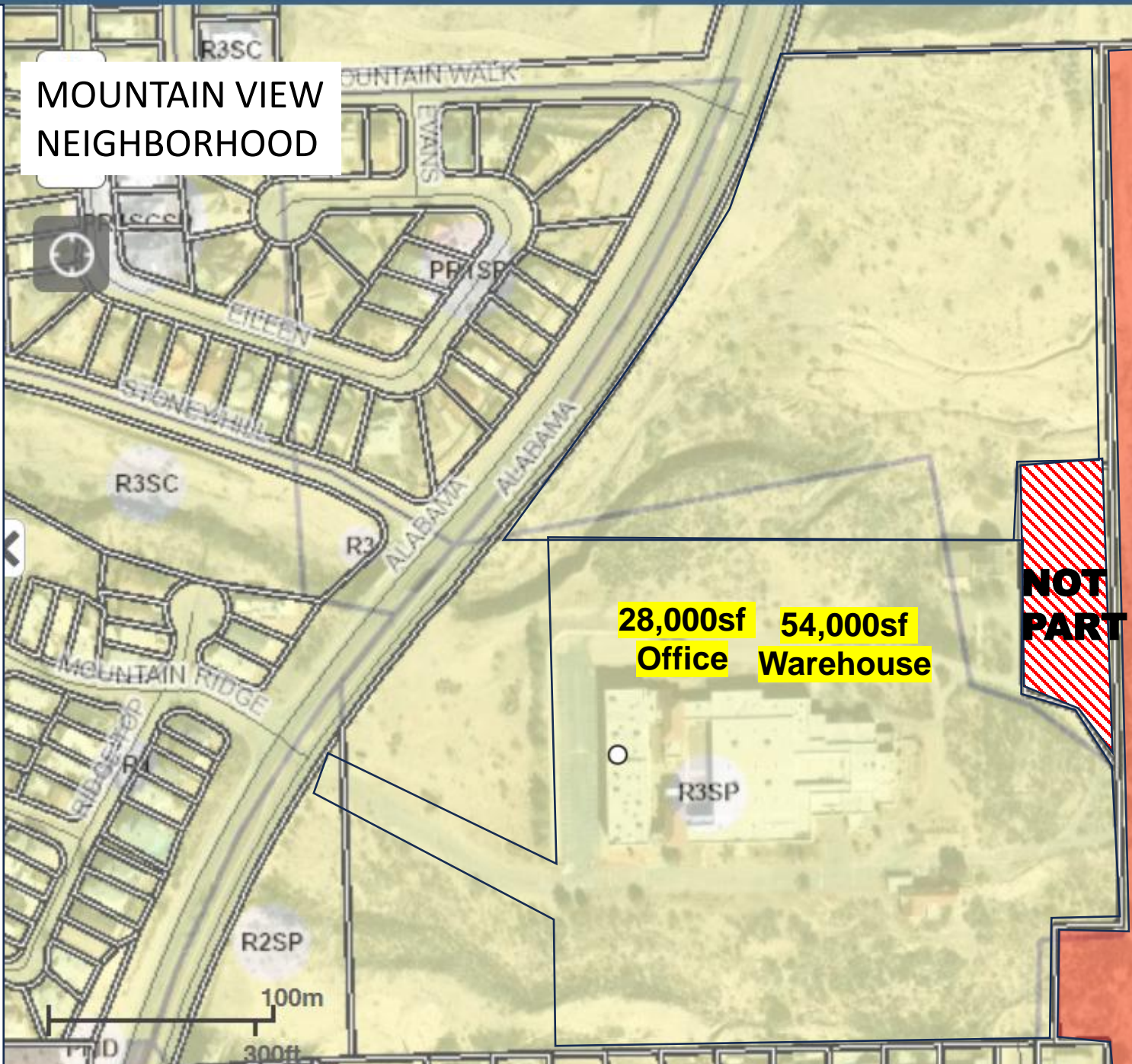
Cristo Rey



El Paso

Layers

**MOUNTAIN VIEW  
NEIGHBORHOOD**



**FORT  
BLISS**

**NOT  
PART**



# OFFICE SPACE DETAILS

- 27,600 SF
- Class B+
- Two Story
- Elevator (Well maintained)



# WAREHOUSE DETAILS

- 54,459 Square Feet
- Single Story
- Class C
- Reinforced Concrete Slab
- 4 Separate Dock Doors
  - 7'x7'
  - 8'x8'
  - 7'x6'
  - 7'x4'
- Refrigerated air throughout warehouse
- 8 Restrooms
- 3 Phase Electricity
- Ceiling Height: 16.3 Feet

