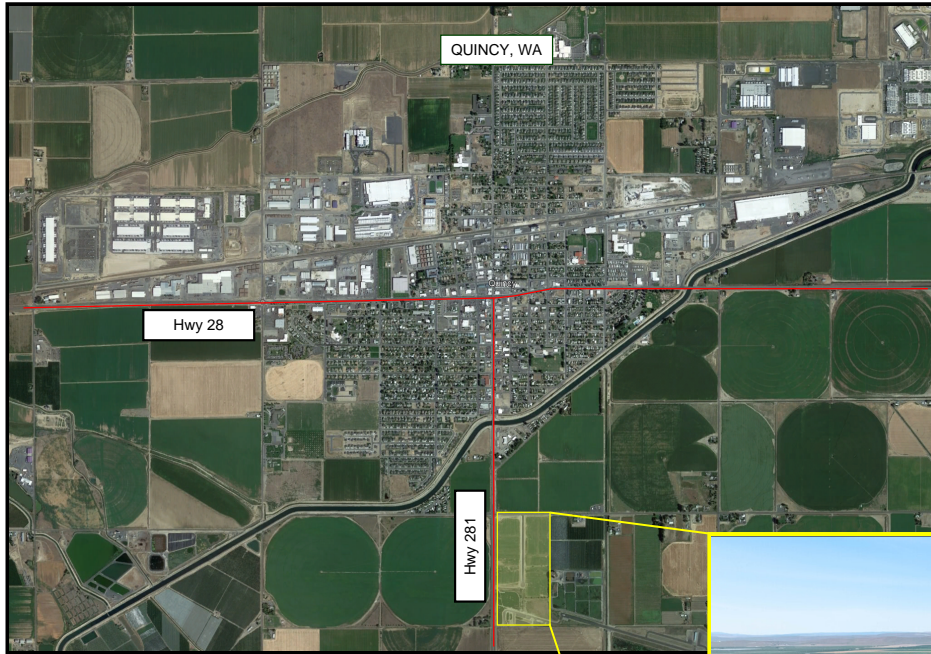


Quincy, Washington

Highway 281 Commercial Development

Zoning: Business | Light Industrial



Adjacent to Highway 281 | Unobstructed Visibility

Hwy 281: T1 Designated Freight Corridor > 2,000 trucks/day

Within City Limits | City Water, Sewer, and Power at Lot | Build-Ready Sites

509-289-0376

jcedergreen@redderecapital.com

Lot Map Pricing & Zoning

SECTION CORNER

FOUND 2-1/2" BUREAU OF RECLAMATION BRASS CAP INSIDE A MONUMENT WELL 0.8' BELOW ASPHALT

See Corner Lot Breakdown: Next Page
Zoning: Business

For Sale: \$1,000,000
Zoning: Business

For Sale: \$1,190,000
Zoning: Business

For Sale: \$605,000
Zoning: Business

For Sale: \$990,000
Zoning: Business

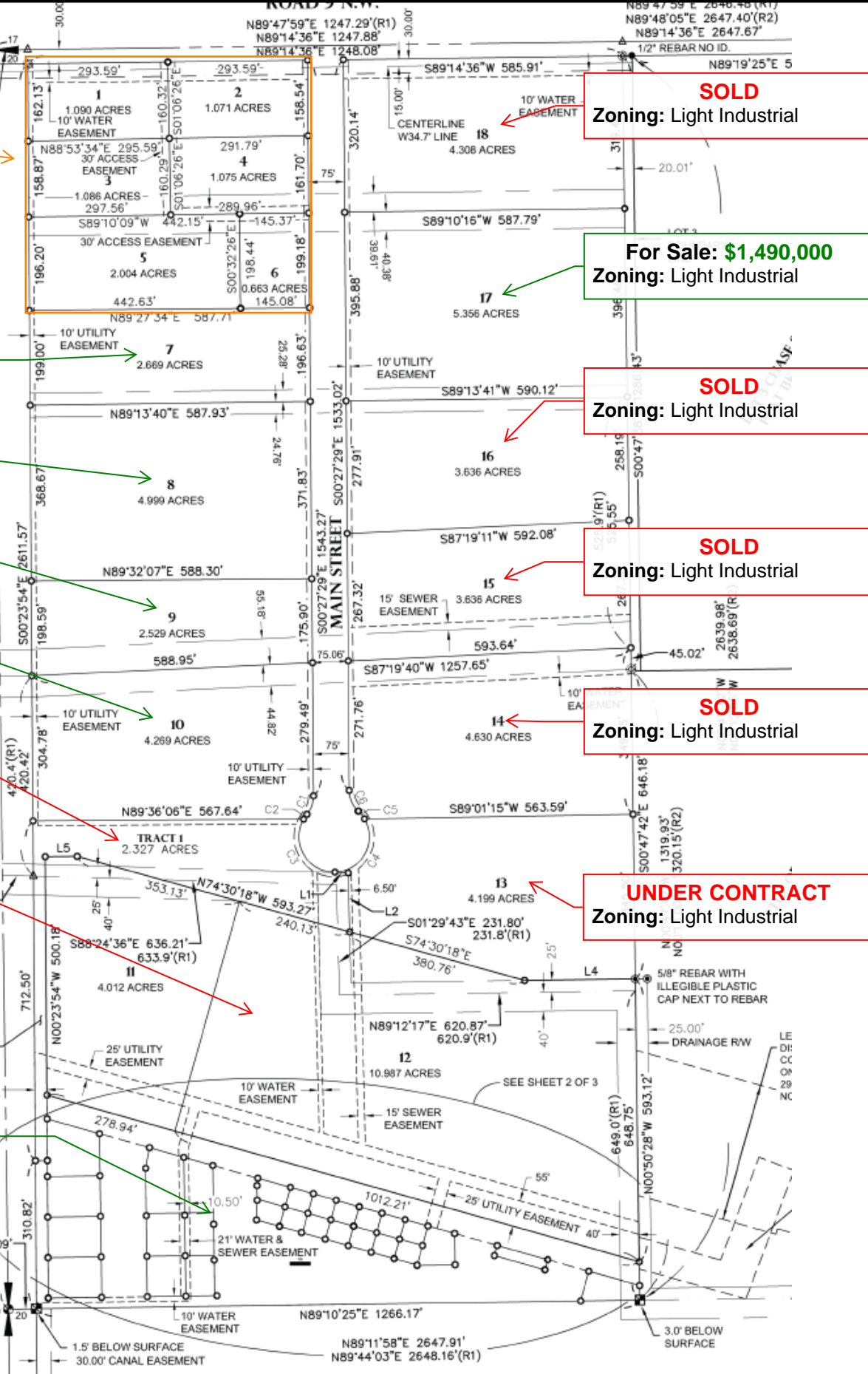
Pending Feasibility
Intended Use: Turning lane off Highway 281

Pending Feasibility
Intended Use: Runway expansion

HANGAR LOTS
SEE SEPARATE PRICING SHEET

QUARTER CORNER

FOUND 2-1/2" BUREAU OF RECLAMATION BRASS CAP ON 1" IRON ROD INSIDE A MONUMENT WELL 0.5' BELOW ASPHALT



SOLD
Zoning: Light Industrial

For Sale: \$1,490,000
Zoning: Light Industrial

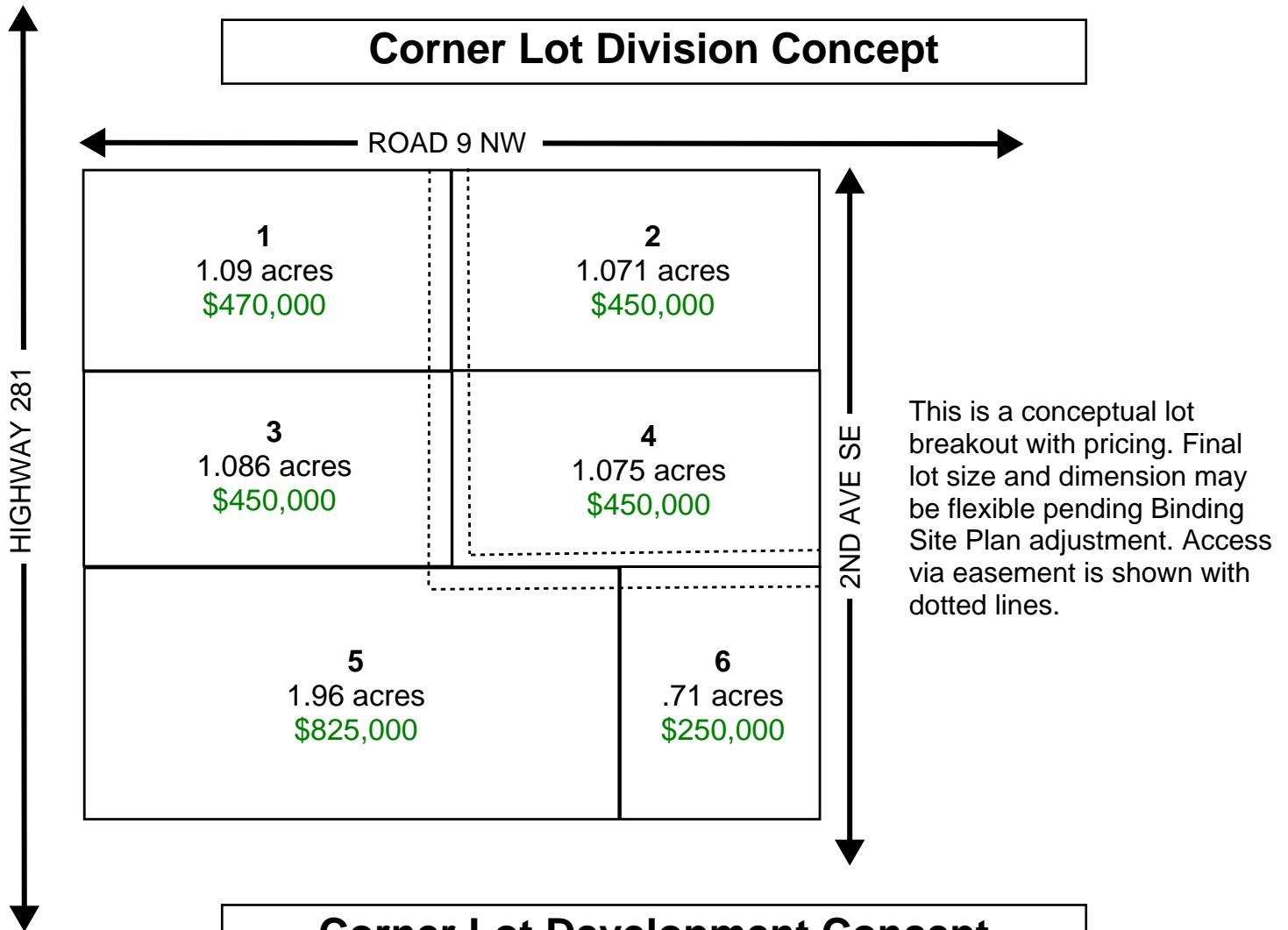
SOLD
Zoning: Light Industrial

SOLD
Zoning: Light Industrial

SOLD
Zoning: Light Industrial

UNDER CONTRACT
Zoning: Light Industrial

Corner Lot Pricing & Concept



Corner Lot Development Concept

