

# WESTMORELAND AIRPARK

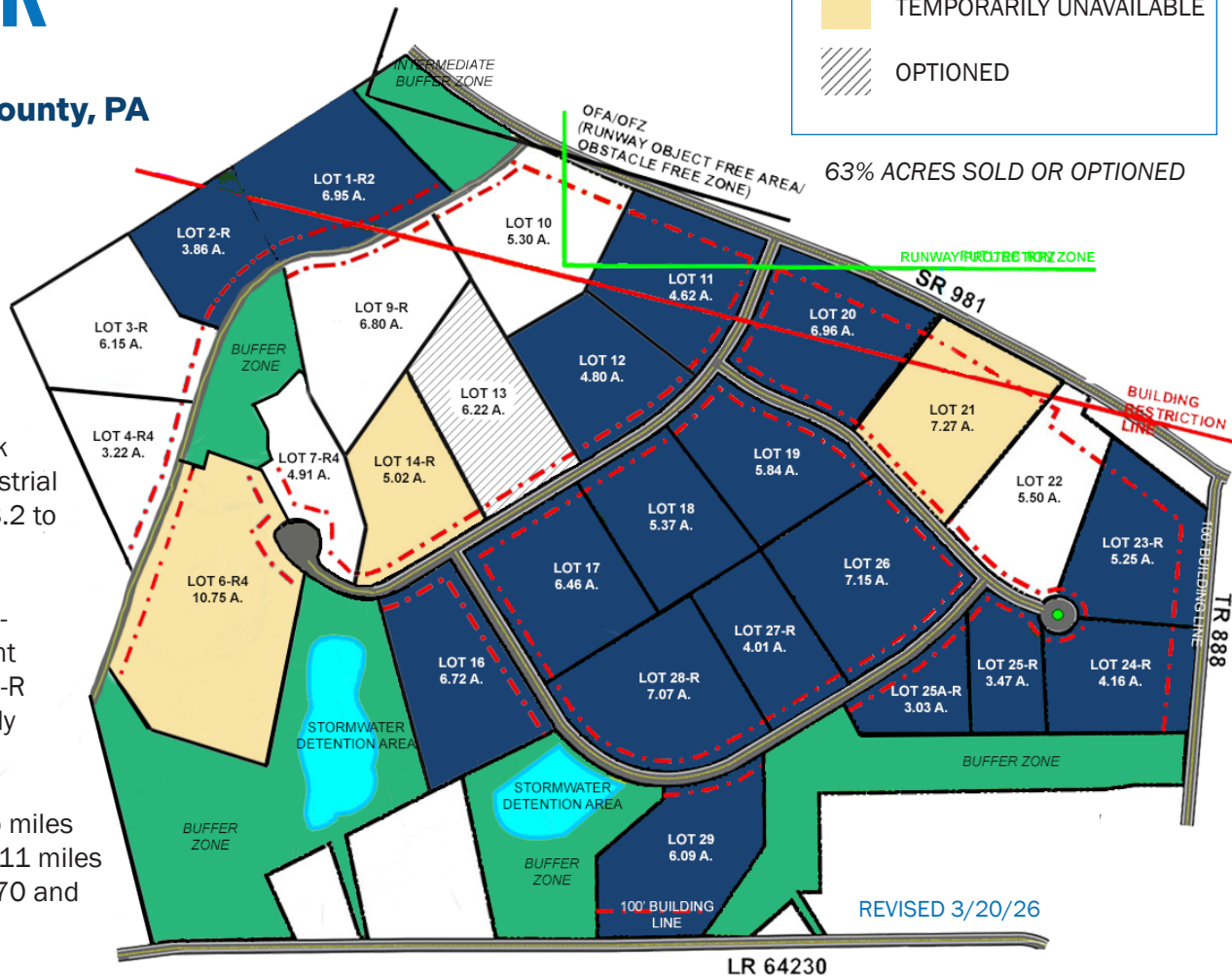
Unity Township,  
Westmoreland County, PA

## ABOUT

Located next to Arnold Palmer Regional Airport, Westmoreland Airpark has available six industrial lots that range from 3.2 to 6.8 acres.

Due to a nearby transportation improvement project, Lots 6-R4, 14-R and 21 are temporarily unavailable.

The park is within two miles of U.S. Route 30 and 11 miles of the New Stanton I-70 and I-76 interchange.



### LOTS SOLD

LOTS SOLD	COMPANY
LOT 1-R2	SNYDER PERFORMANCE ENGINEERING
LOT 2-R	LATROBE ANIMAL CLINIC
LOT 11	WESTMORELAND MECHANICAL TESTING & RESEARCH, INC.
LOT 12	INDUSTRIAL TRACTOR PARTS
LOT 16	724 AIRPARK PARTNERS LLC
LOT 17	UNIVERSAL PLASTICS - LATROBE
LOT 18	ASG INVESTMENTS LLG
LOT 19	724 AIRPARK PARTNERS LLC
LOT 20	WESTMORELAND MECHANICAL TESTING & RESEARCH

### LOTS SOLD

LOTS SOLD	COMPANY
LOT 23-R	ARCH CUTTING TOOLS
LOT 24-R	MENASHA PACKAGING CO.
LOT 25A-R	HUNTING ENERGY SERVICES
LOT 25-R	LANG SPECIALTY TRAILERS
LOTS 26, 27-R & 28R	OPEN LIBRARY, PUBLIC CHARITIES
LOT 29	LATROBE MACHINING CORPORATION

### OPTIONED

OPTIONED	COMPANY
LOT 13	FOX & JAMES INC.



# WESTMORELAND AIRPARK

## AVAILABLE ACREAGE

LOT 3-R - 6.15 ACRES	\$307,500
LOT 4-R4 - 3.22 ACRES	\$161,000
LOT 7-R4 - 4.91 ACRES	\$245,500
LOT 9-R - 6.80 ACRES	\$340,000
LOT 10 - 5.30 ACRES	\$265,000
LOT 22 - 5.50 ACRES	\$275,000

Projects may be eligible for an [8-year LERTA tax incentive](#).  
LERTA applications accepted through 8/18/26.

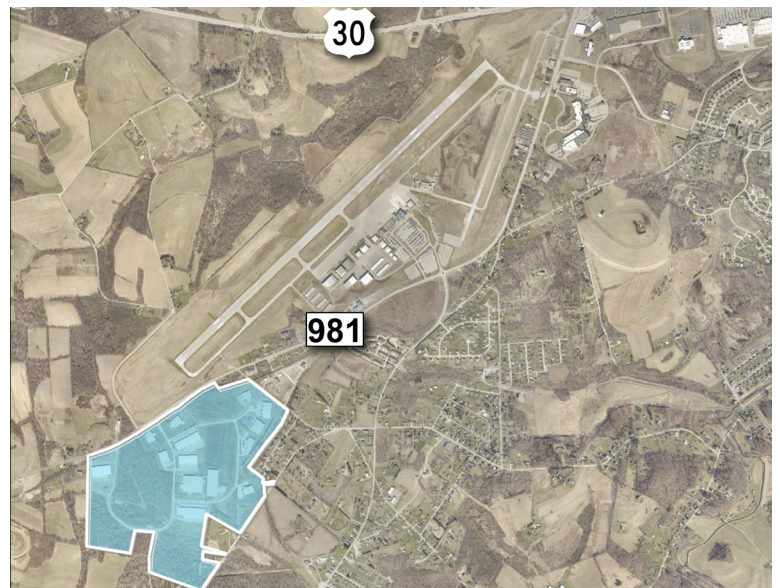
## KEY DISTANCES

PA ROUTE 981	Adjacent
U.S. ROUTE 30	2.7 Miles
I-70 & I-76	12 Miles

## PARK DETAILS

Total Acreage: **195+**

- ▶ Zoned: Institutional Airpark District
- ▶ Utilities at Roadway



NOTE: Information shown is purported to be from reliable sources. No representation is made to the accuracy thereof, and is submitted subject to errors, omissions, change in price, prior sale, withdrawal notice, or other conditions.