

# Galleria Tenant Experience



## INTERIOR BUILDING AMENITIES

- Transformed tenant lounges offering various seating and collaboration areas
- Tenant engagement app with weekly curated events
- 90-person training room
- 10,000 IronWorx Fitness Studio (professionally operated) offering group fitness classes and personal training with Peloton bikes
- On-site Starbucks
- Ultrafast 1 Gigabit WiFi in all common areas
- Multiple cafes throughout campus
- Sweetgreen outpost
- WELL Health-Safety Rating, Energy Star Certified, and BOMA 360 Performance Buildings
- Needlepoint Bipolar Ionization (NPBI Technology)

## EXTERIOR BUILDING AMENITIES

- 6-acre outdoor park offering community green space for open-air collaboration and outdoor meetings
- Upfit outdoor adaptive workspace structures that provide power and wifi
- Pedestrian bridge to The Battery
- 30+ restaurants within a 10-minute walk
- Private tenant shuttle to The Battery, Akers Mill Shopping Center, and Cumberland Mall
- Immediate access to I-75 (N/S) and I-285 (E/W) with numerous points of ingress/egress
- Access to Cumberland Trails and future Cumberland Sweep
- Electrical vehicle charging stations
- Amazon lockers
- Cumberland CID bike share
- Helipad





**GALLERIA**  
ON THE PARK

# Building 100

Suite 380 // 3,419 RSF





**GALLERIA**  
ON THE PARK

# Building 100

Suite 450 // 6,798 RSF



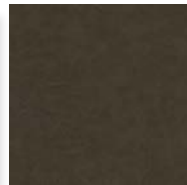
CARPET



CERAMIC  
TECHNICS



CAESARSTONE



CONCERTEX



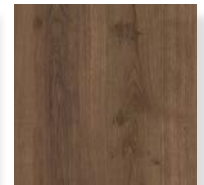
KNOLL  
TEXTILES



GARDEN ON  
THE WALL



MATTE BLACK  
HARDWARE



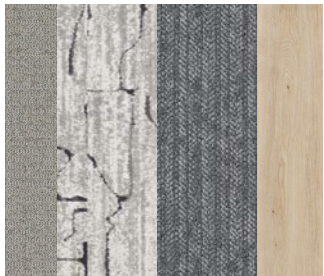
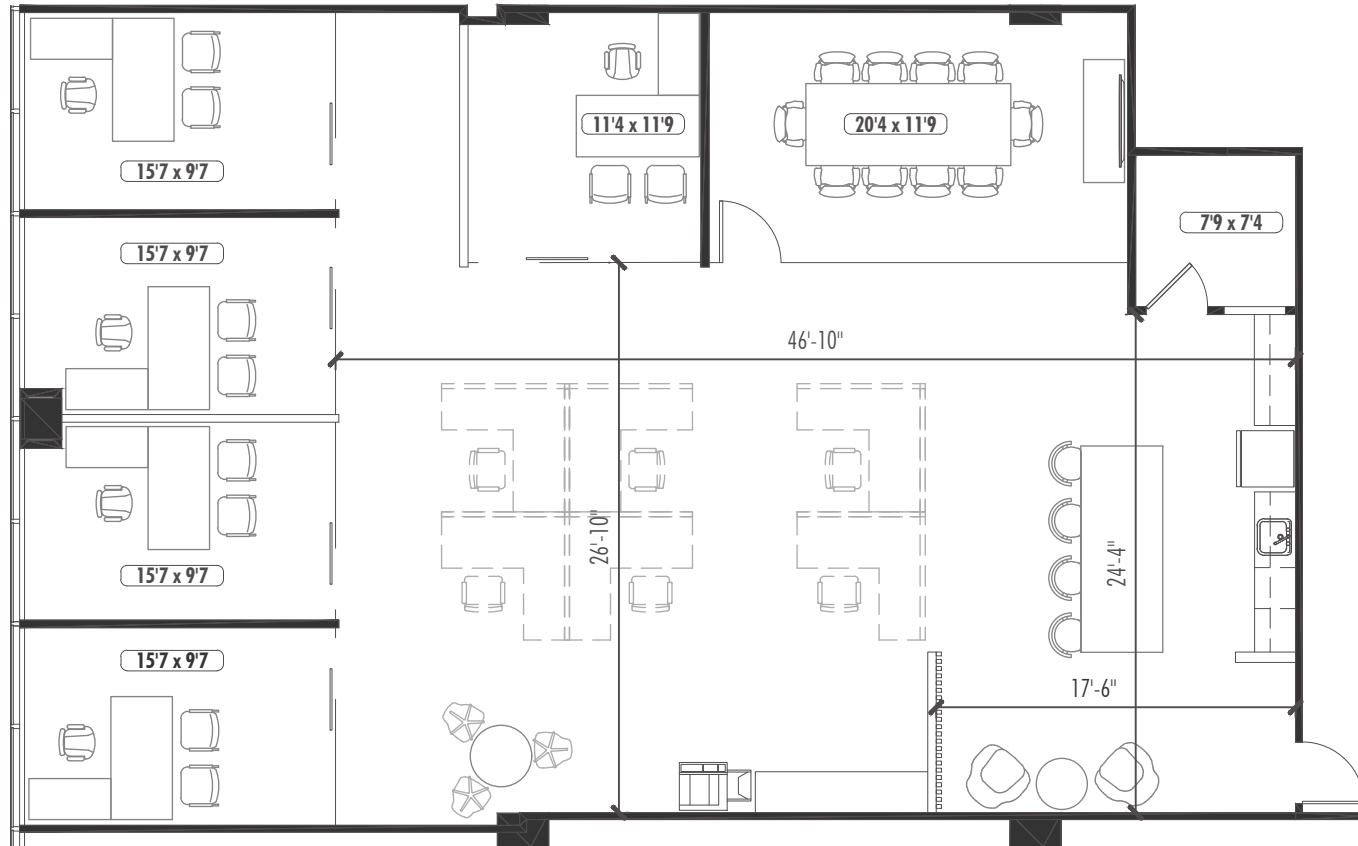
FORMICA



**GALLERIA**  
ON THE PARK

# Building 100

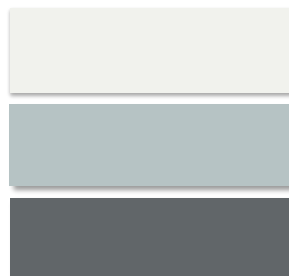
Suite 965 // 2,859 RSF



FLOORING



FELT BAFFLES & RING PENDANTS



PAINT



WOOD



LAMINATE

FORMICA

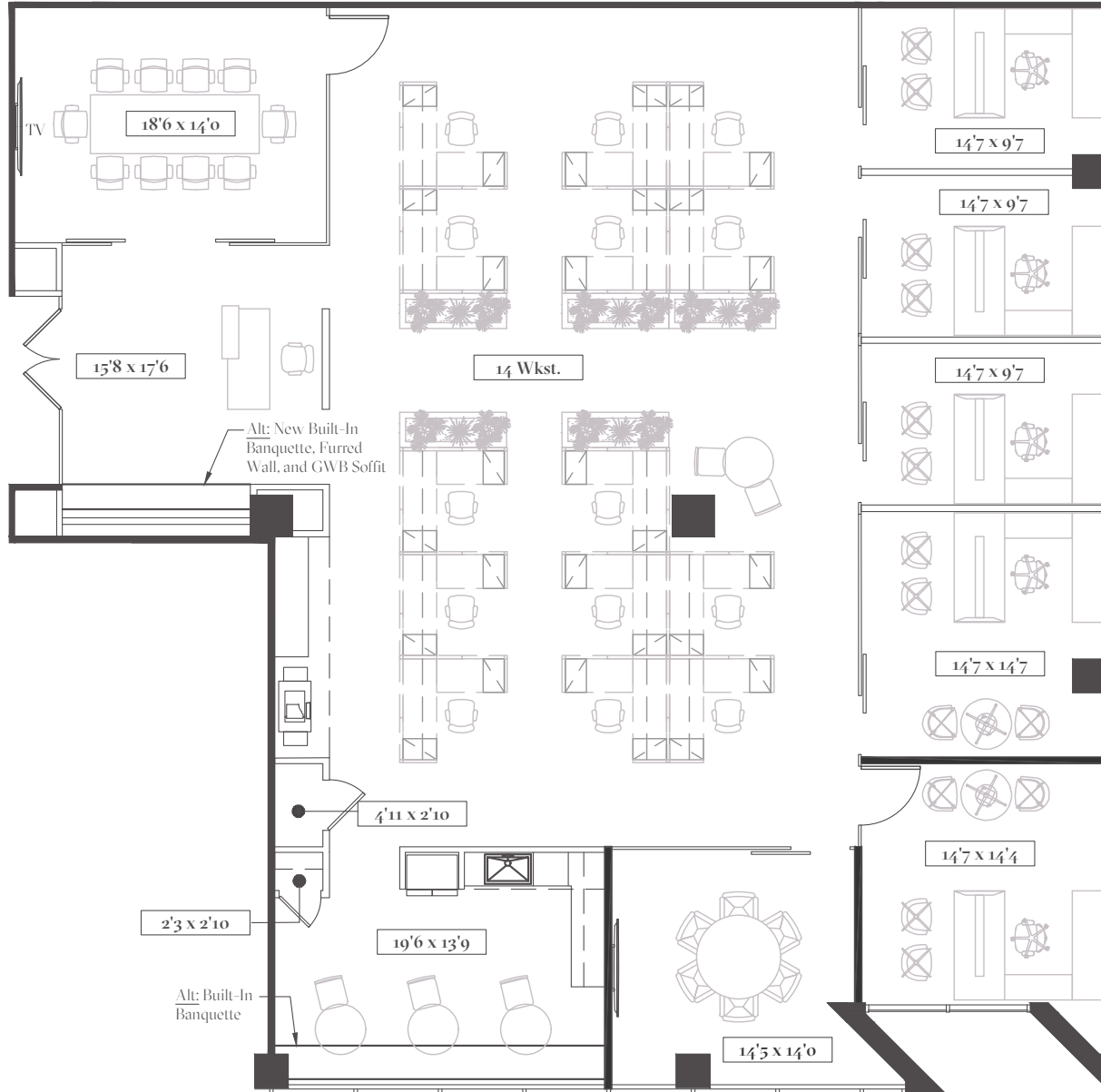
CORIAN QUARTZ



**GALLERIA**  
ON THE PARK

# Building 100

Suite 1350 // 4,309 RSF

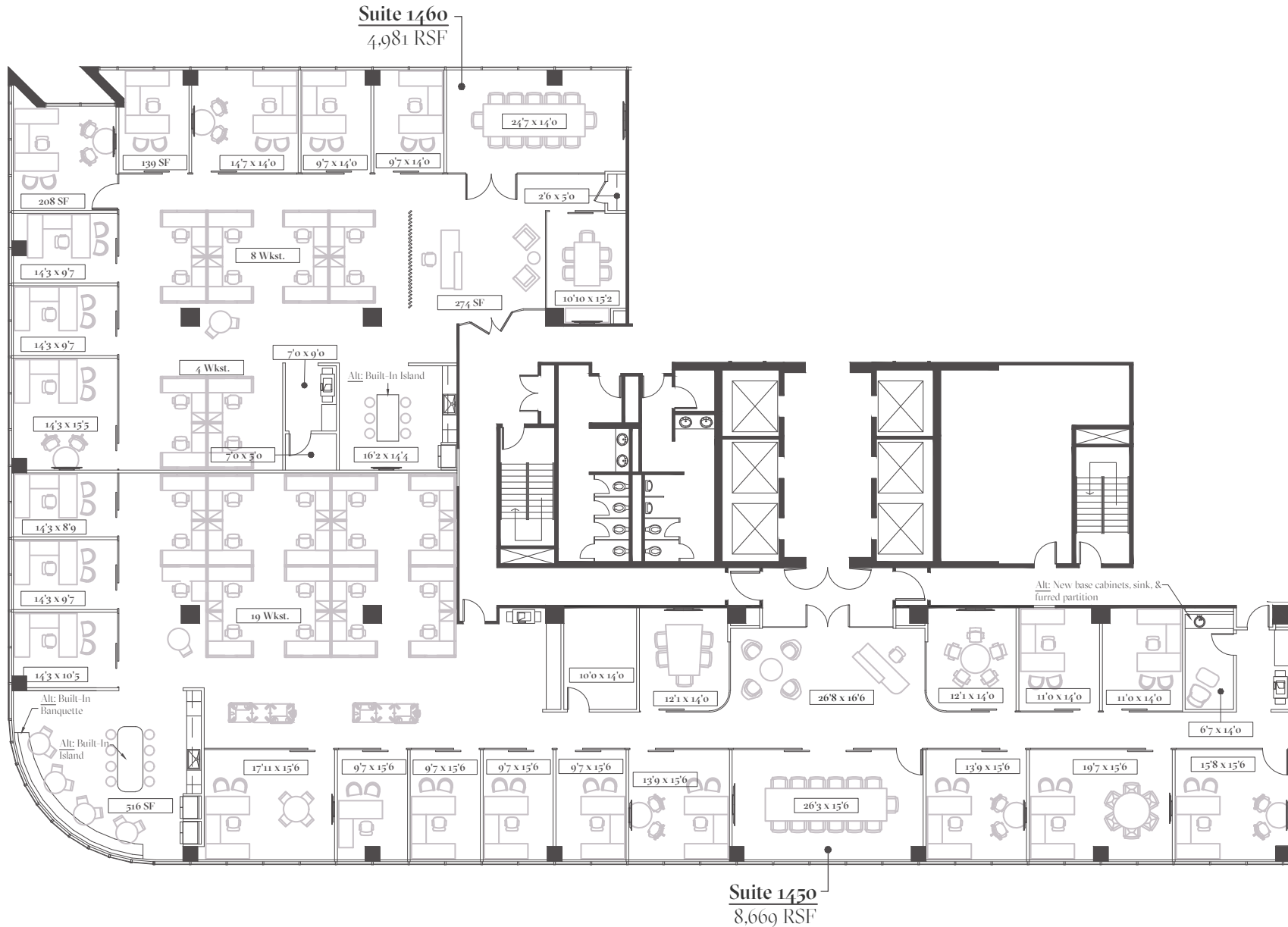




**GALLERIA**  
ON THE PARK

# Building 100

Suite 1450 & 1460 // 13,650 RSF

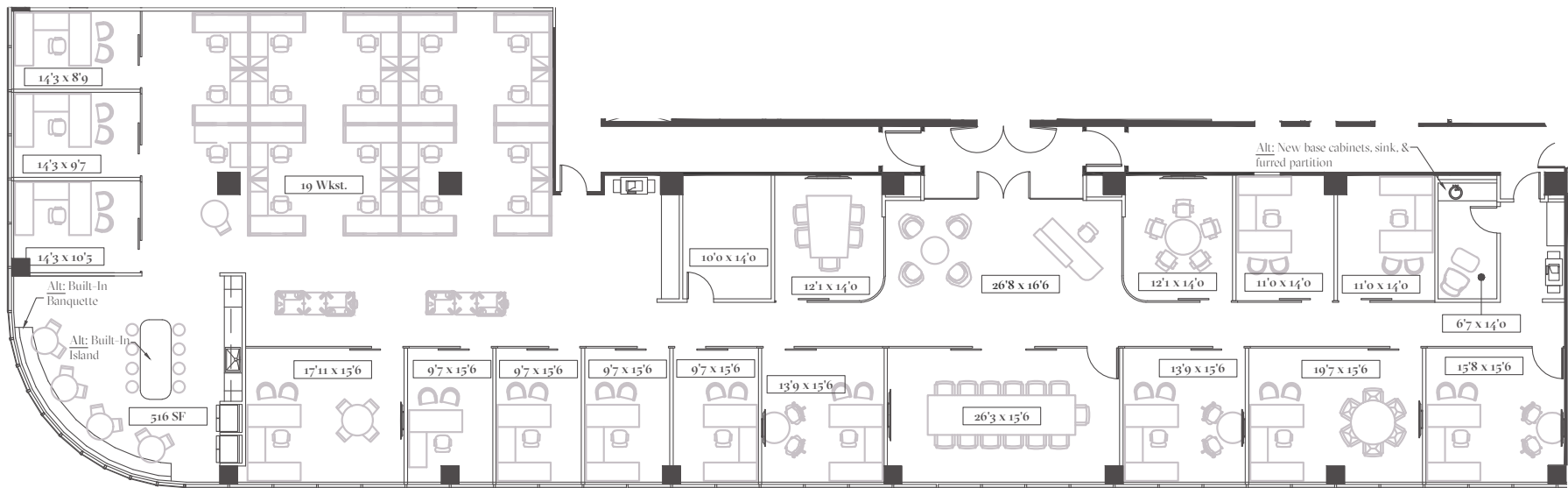




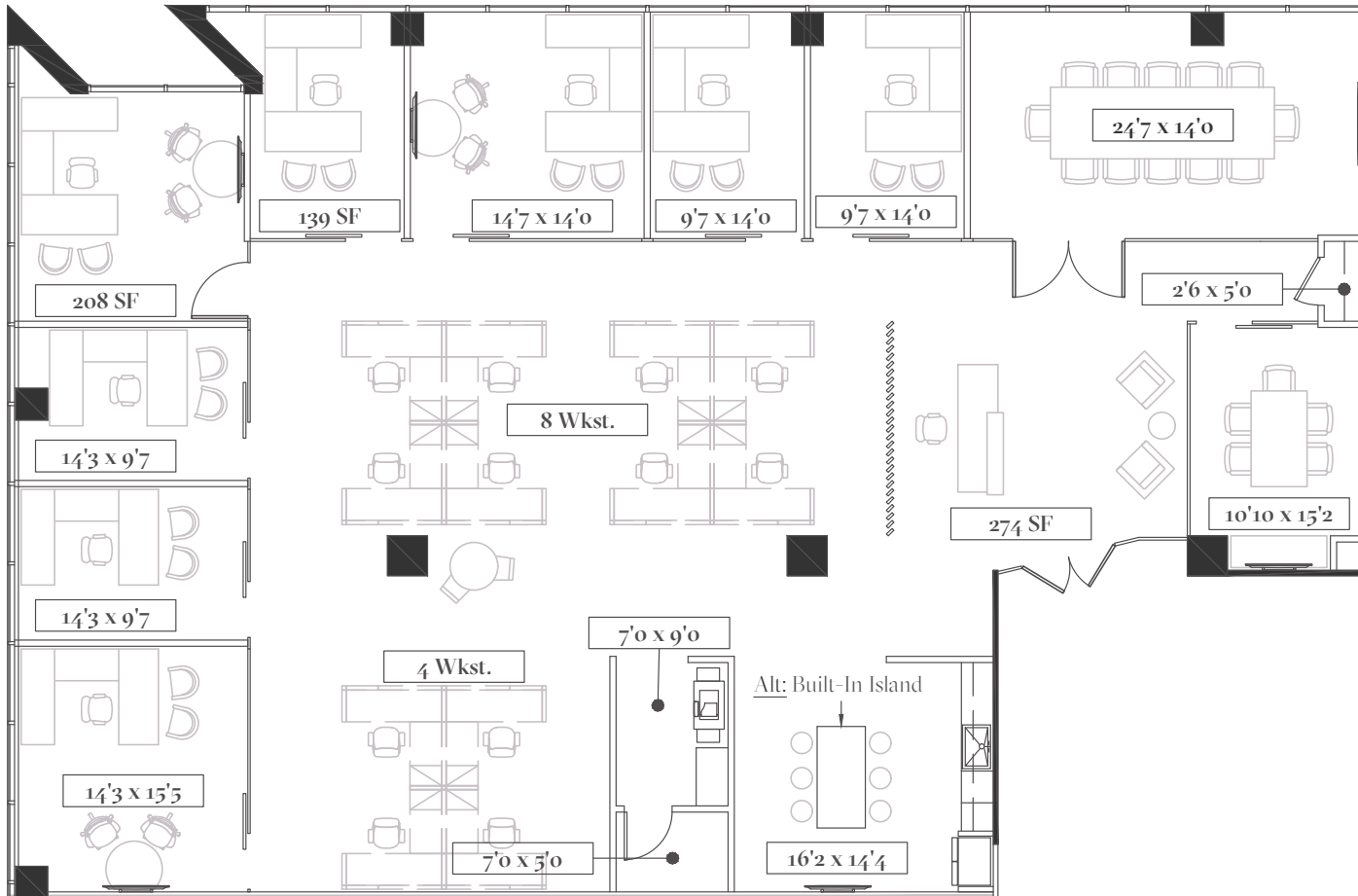
**GALLERIA**  
ON THE PARK

# Building 100

Suite 1450 // 8,669 RSF





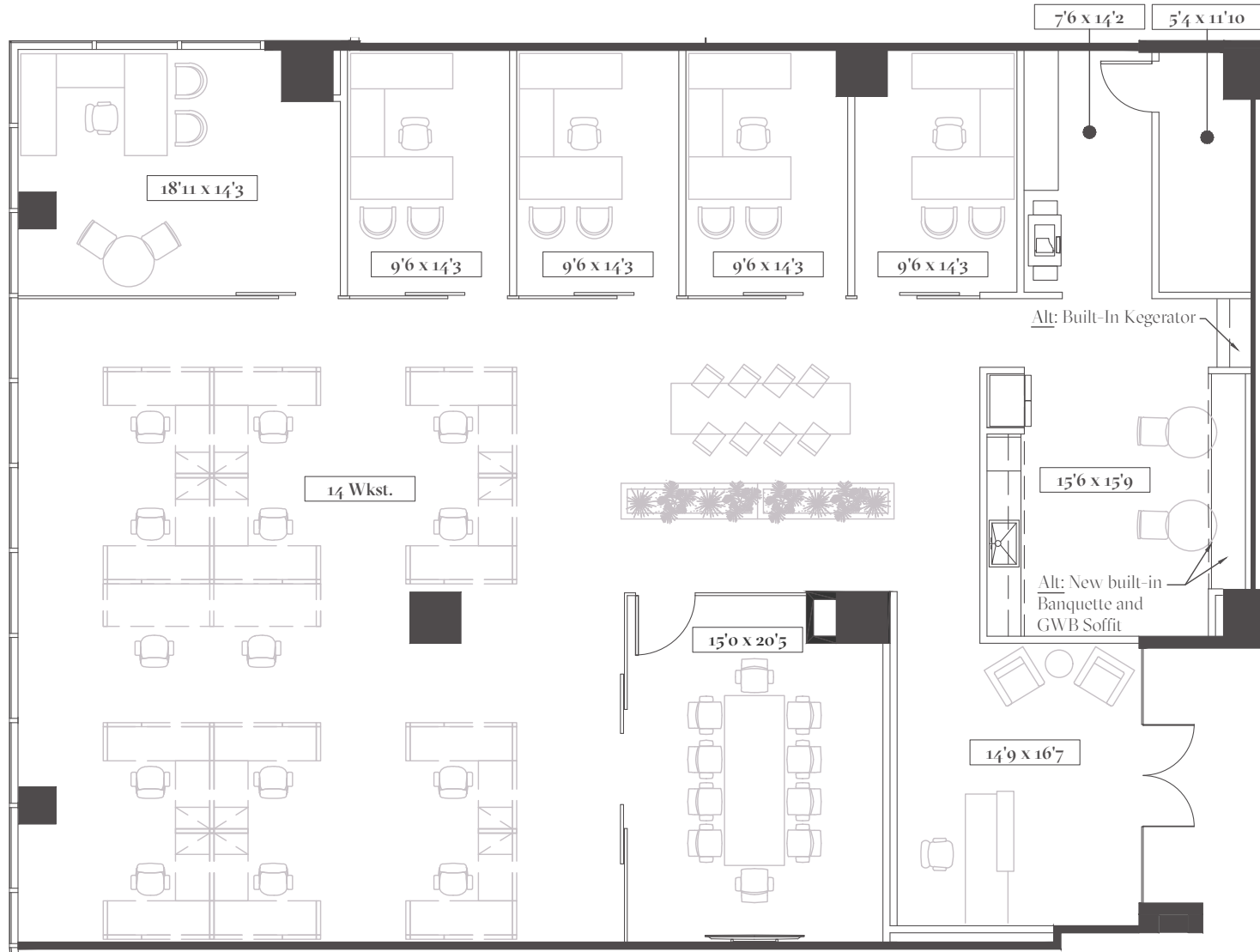




**GALLERIA**  
ON THE PARK

# Building 200

Suite 250 // 4,393 RSF

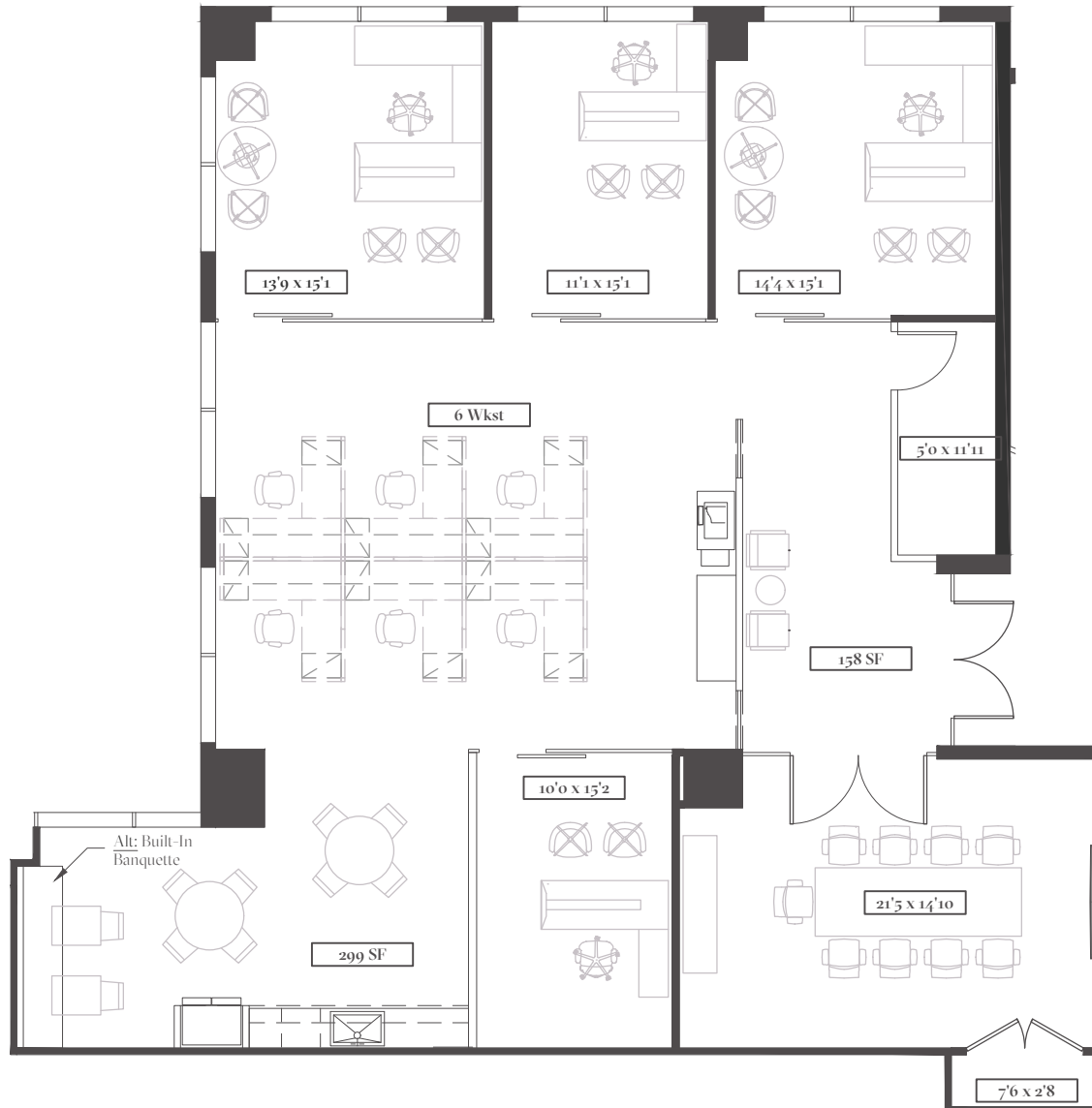




**GALLERIA**  
ON THE PARK

# Building 300

Suite 310 // 2,797 RSF





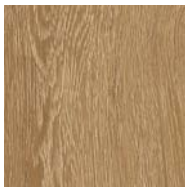
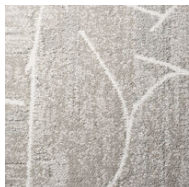
**GALLERIA**  
ON THE PARK

# Building 400

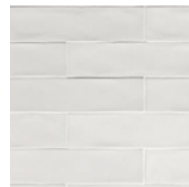
Suite 960 // 7,015 RSF



CARPET



WOODGRAINS  
ANTIQUE OAK



TILE



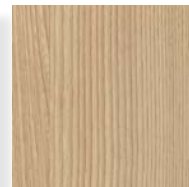
CAESARSTONE



MATTE BLACK  
HARDWARE



FORMICA  
GLOSS



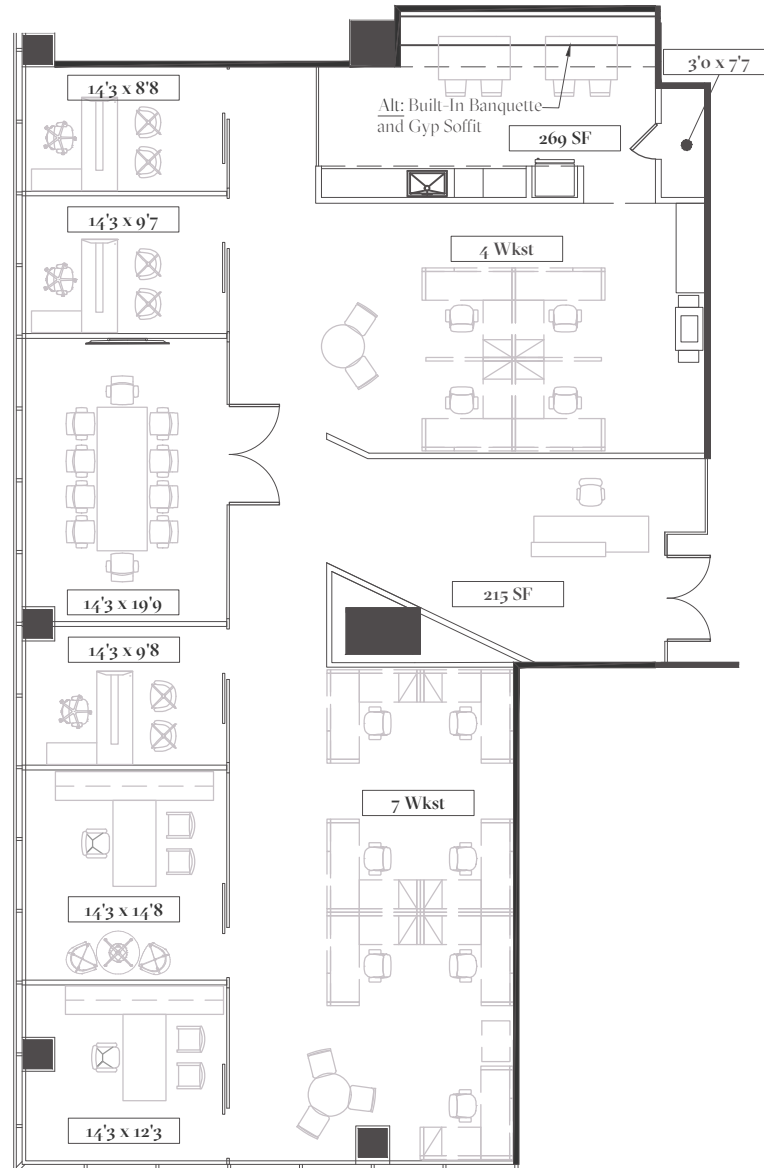
FORMICA



**GALLERIA**  
ON THE PARK

# Building 600

Suite 515 // 3,930 RSF





# GALLERIA

ON THE PARK

## Contact Information

---

**ADAM VIENTE**

+1 404 995 6551

[adam.viente@jll.com](mailto:adam.viente@jll.com)

**JEFF BELLAMY**

+1 404 995 2221

[jeff.bellamy@jll.com](mailto:jeff.bellamy@jll.com)

**CLAIRE ROSS**

+1 404 995 2473

[claire.ross@jll.com](mailto:claire.ross@jll.com)

