

DOWNTOWN BOULDER OFFICE CONDO FOR SALE



MAPLETON TERRACE OFFICE CONDO FOR SALE \$749,000

2033 11TH STREET, UNIT 5 BOULDER, COLORADO 80302

Mapleton Terrace is located in the heart of Downtown Boulder, just feet from the Pearl Street Mall. The best of Downtown Boulder, shopping, restaurants and more! Updated finishes and a great floorplan!

Keys Commercial

T 303.214.1540 | C 303.818.4006
keys-commercial.com
885 Arapahoe Ave. | Boulder,
Colorado, 80302

2033 11TH STREET MAPLETON TERRACE OFFICE CONDO

PROPERTY FEATURES

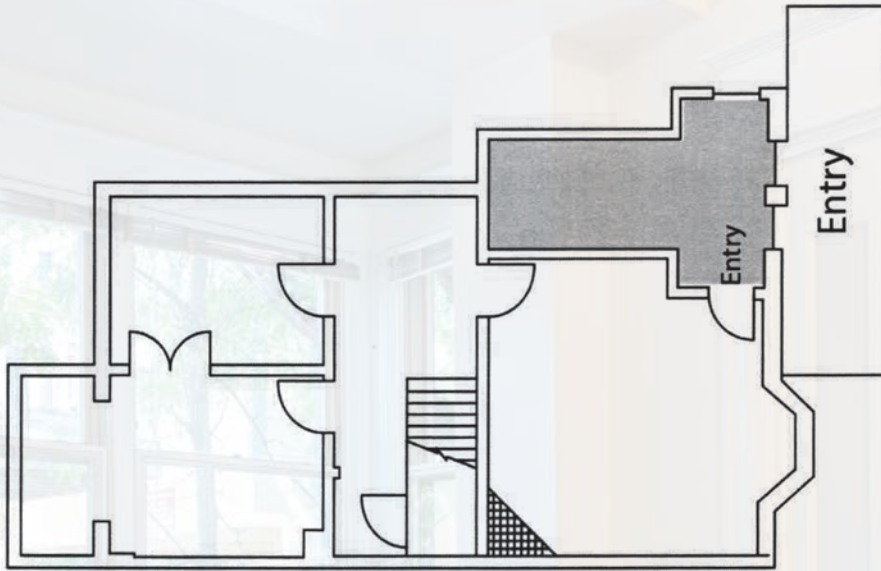
- 2 story professional office condo for sale
- Quality finishes and fixtures
- The condo features recently updated bathroom with shower and a breakroom
- Walking distance to numerous amenities, including restaurants, retail and the Boulder Creek Path
- Located ½ block from the Pearl Street Mall



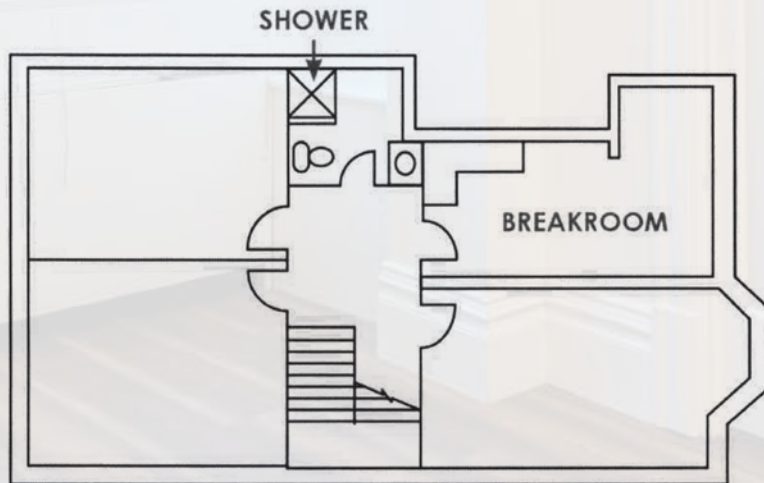
FLOOR PLAN

UNIT 5 - 1,564 SQUARE FEET

MAIN FLOOR





2ND FLOOR



AGENT INFO



GEOFFREY E. KEYS

 303.214.1540 | 303.818.4006
 keys@keys-commercial.com

Copyrighted report licensed to Keys Commercial Real Estate - 74697361.