



# NORTH PARK CORPORATE CENTER

17319 SAN PEDRO AVE, SAN ANTONIO TX 78232



## LEASING CONTACTS:

**CHARLIE WEIL**  
(210) 253 - 2934  
charlie.weil@transwestern.com

**MASON POLLARD**  
(210) 253 - 2935  
mason.pollard@transwestern.com



# BUILDING FEATURES



**A MODERN OFFICE FOR A MODERN  
WORKER**

**+/- 7,262 SF -  
+/- 18,148 SF**

**BUILDING 3: ±7,262 SF  
BUILDING 4: ±7,742 SF  
BUILDING 5: ±18,148 SF**



**WRAP AROUND PARKING WITH  
DRIVE-UP ACCESSIBILITY  
(4.65/1,000)**



**TOUR NEWLY CONSTRUCTED  
ONSITE GREENSPACE**



**EXTERIOR MEETING  
AREAS WITH FULL WIFI  
INTEGRATION**



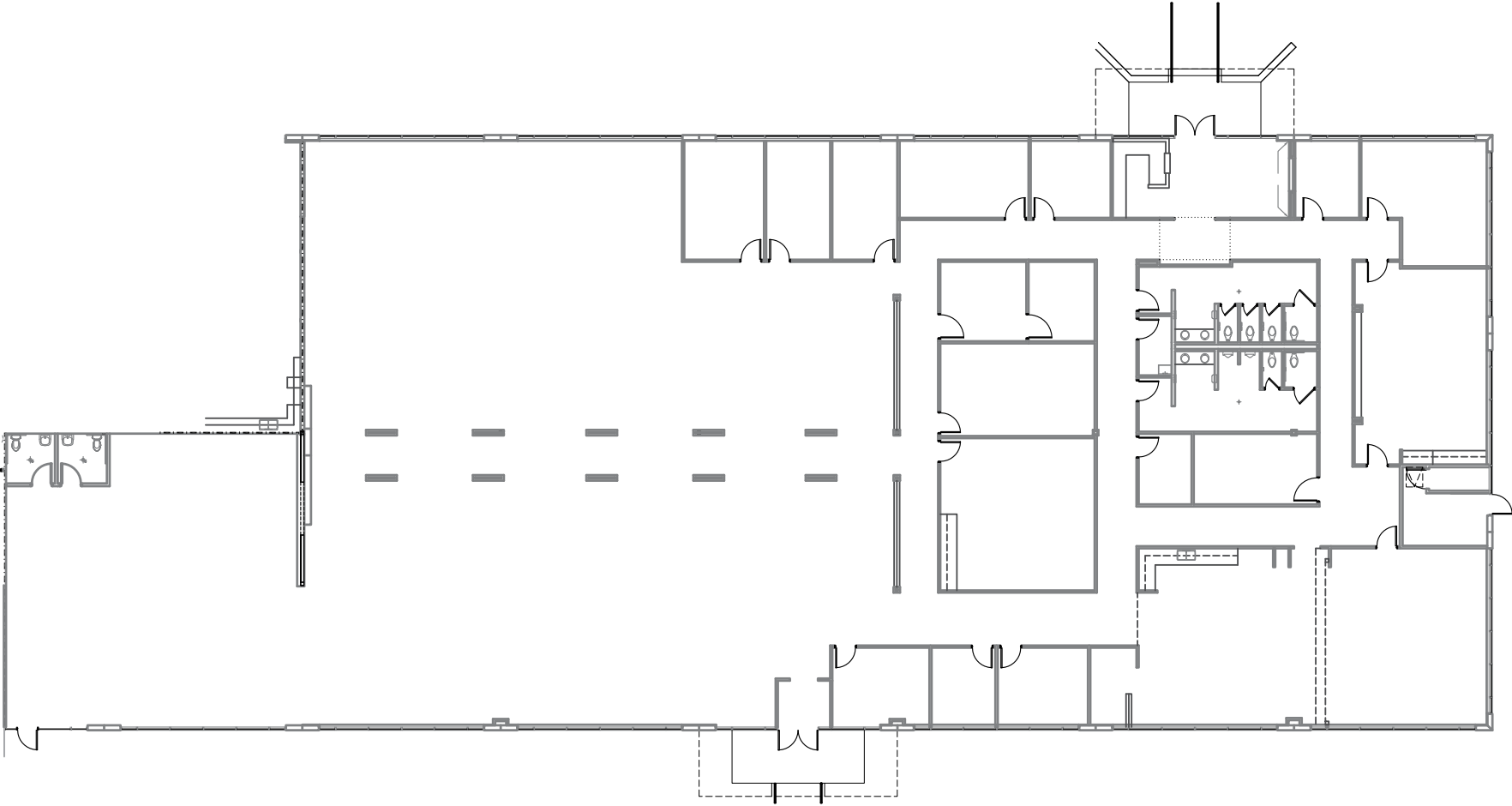
**BEST-IN-CLASS AMENITIES WITHIN  
1 MILE OF PROPERTY**

# INTERIOR SPACES



# BUILDING 5 | AS-BUILT FLOOR PLAN | SUITE 500 | 18,148 RSF

Efficient floorplate provides maximum flexibility for a range of buildout options from fully open plan to perimeter office.



\*Space available with 30 day notice

# BUILDING 3 | AS-BUILT FLOOR PLAN | SUITE 300 | 7,262 RSF

Move-in ready space tailored to accommodate diverse business needs with ease.



\*Space available with 30 day notice

# BUILDING 4 | AS-BUILT FLOOR PLAN | SUITE 425 | 7,742 RSF

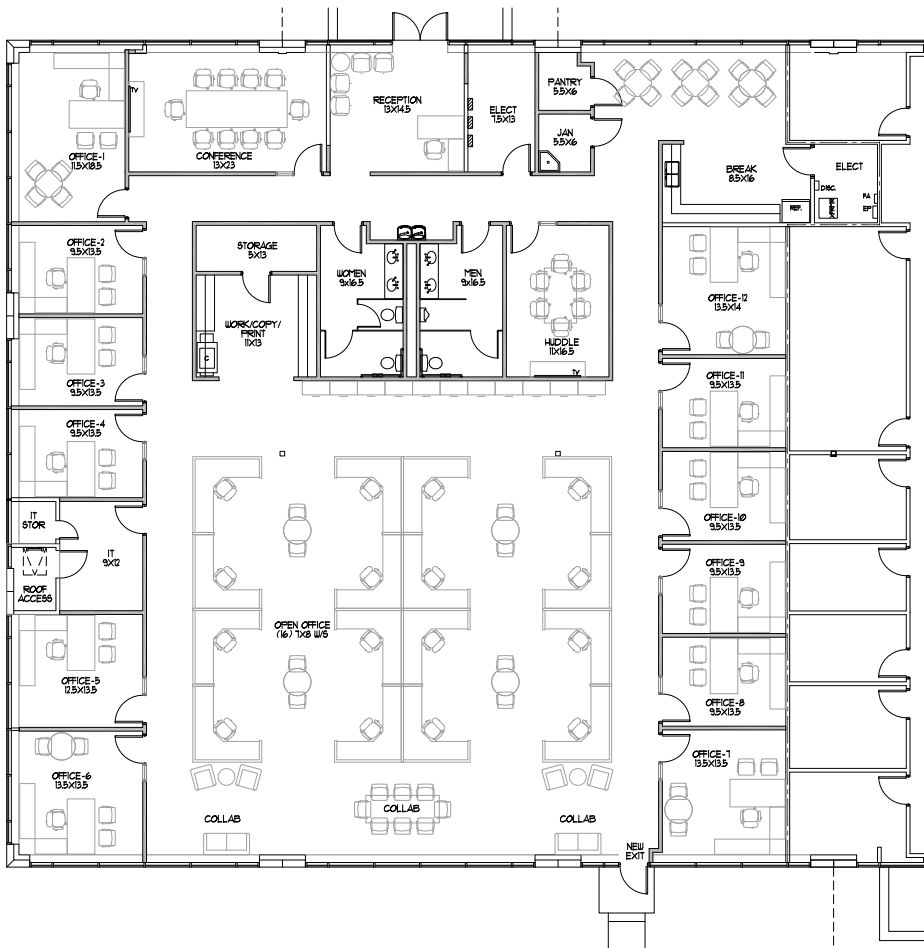
Efficient floorplate provides maximum flexibility for a range of buildout options from fully open plan to perimeter office.



[VIRTUAL TOUR](#)

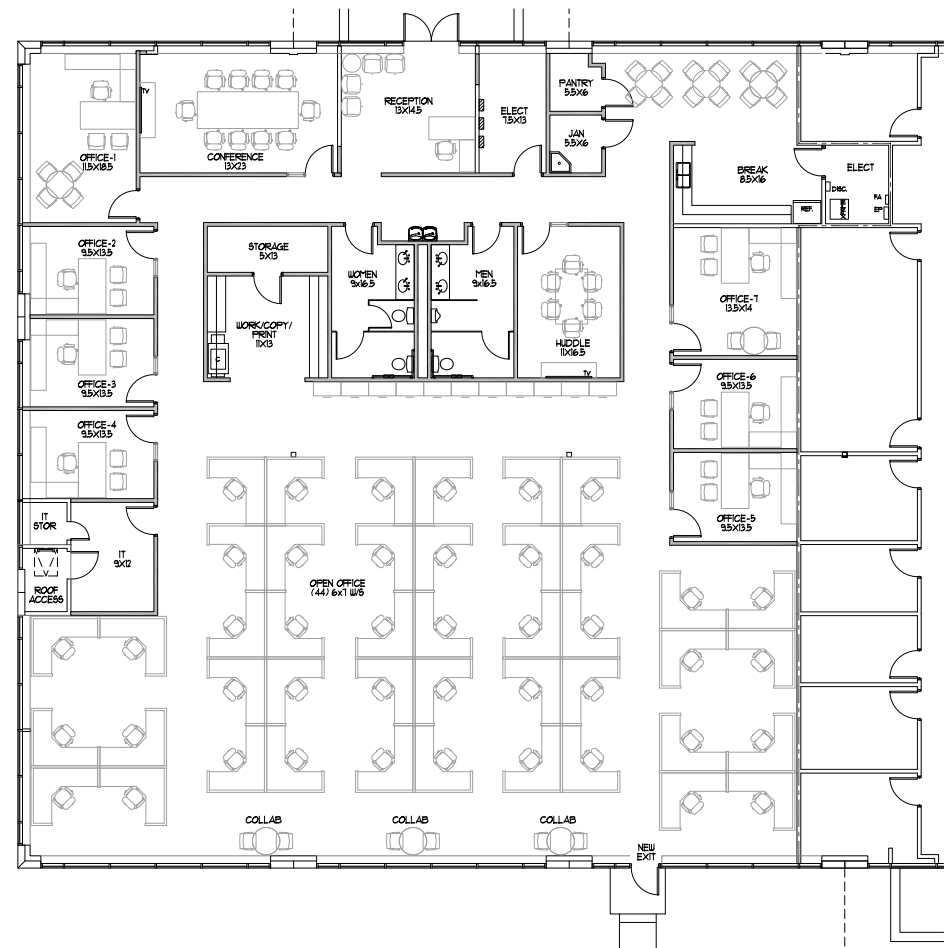
# BUILDING 4 | CONCEPTUAL PLANS | SUITE 425 | 7,742 RSF

## OPTION 1



**16 OPEN OFFICE WORKSTATIONS**  
**12 PRIVATE OFFICES**  
**2 HUDDLE/CONFERENCE ROOMS**  
**1 BREAK/LOUNGE AREAS**

## OPTION 2



**44 OPEN OFFICE WORKSTATIONS**  
**7 PRIVATE OFFICES**  
**2 HUDDLE/CONFERENCE ROOMS**  
**1 BREAK/LOUNGE AREAS**

# OUTDOOR AMENITY | GREENSPACE

Enjoy a breath of fresh air at North Park Corporate Center's new landscaping project that benefits employees and the environment.







1604

281

1604

281

**NORTH PARK**  
CORPORATE CENTER



PHASE I

PHASE II



Ingress



Egress

---

**Local Amenities**  
1-Mile Radius

	Area Count
Groceries	3
Shopping	42
Restaurants	32

Large Retailers










**SUITE 425**  
**7,742 SF**

**SUITE 300**  
**7,262 SF**

**SUITE 500**  
**18,148 SF**

**CHARLIE WEIL**

Transwestern  
(210) 253 - 2934  
[charlie.weil@transwestern.com](mailto:charlie.weil@transwestern.com)

**MASON POLLARD**

Transwestern  
(210) 253 - 2935  
[mason.pollard@transwestern.com](mailto:mason.pollard@transwestern.com)

