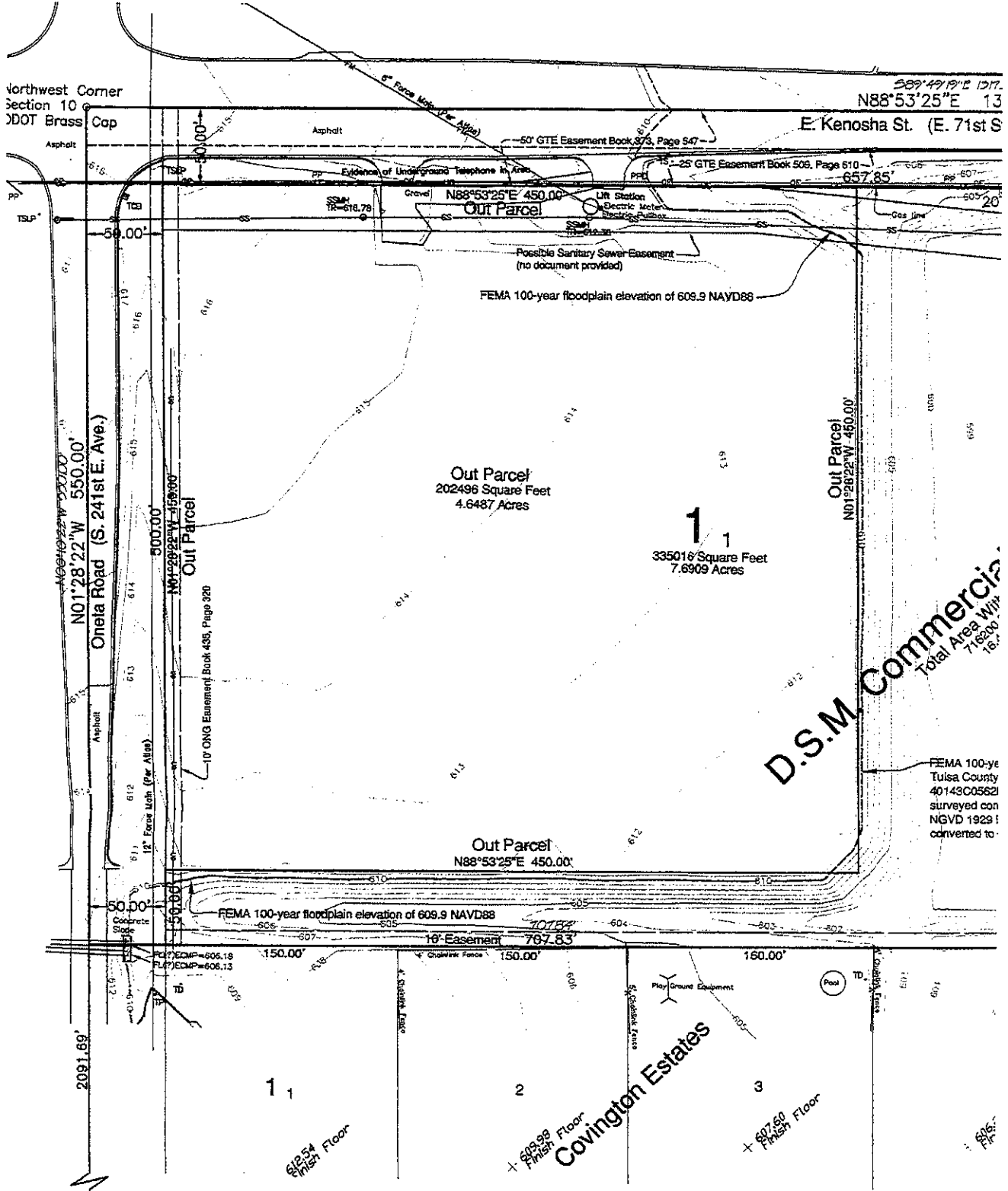


Northwest Corner
Section 10
DOT Brass Cap

589°49'19"E 137.7
N88°53'25"E 13

E. Kenosha St. (E. 71st S



West Quarter Corner
Section 10
Found 5/8" Rebar with
Cap "RLS 1253"

- Revision:**
- 11/16/2010
Add Floodplain Line 609.9 NAVD 1988 to Graphics
 - 11/16/2010
Add NGVD29 to NAVD88 conversion Factor to Notes
 - 11/16/2010
Add Latitude and Longitude Coordinates of Benchmark to Notes

Floodplain:
FEMA 100-year floodplain elevation of 609.9 NAVD88

- Notes:**
- Bearings are based on Oklahoma North State Plane previous survey.
 - Benchmark is the Top middle of the South Headwall of Latitude 36°03'38.45", Longitude -95°42'20.54" Oklah
 - The Vertical and Horizontal datum were determined by Geodetic Survey solutions.
 - The Horizontal datum is (SPC 3501 OK N), NAD83 (to ground distances). The Vertical Datum is NAVD 1988.
 - Vertical Datum shift (NAVD 88 minus NGVD 29): 0.36
 - All underground utilities were located by observable "OKIE" (1-800-522-6543) before digging.