



Specifications

Property Highlights

- ±13,000 SF Medical Office
- 4 Medical / Office Units
- 12' Ceiling Height (Slab to Slab)
- ±3.24 AC Lot (Block 46, Lot 12)
- No Loading
- 2.86 / 1000 Parking Ratio
- Taxes at \$42,115.20 (2025)
- Zoned General Commercial
- Currently Undergoing Interior and Exterior Renovations

Accessibility

- 1 Mile to Route 31
- 8.3 Miles to Hackettstown Airport
- 11.2 Miles to Hackettstown Medical Center
- 11.7 Miles to I-78

Sale Price

- \$1,400,000

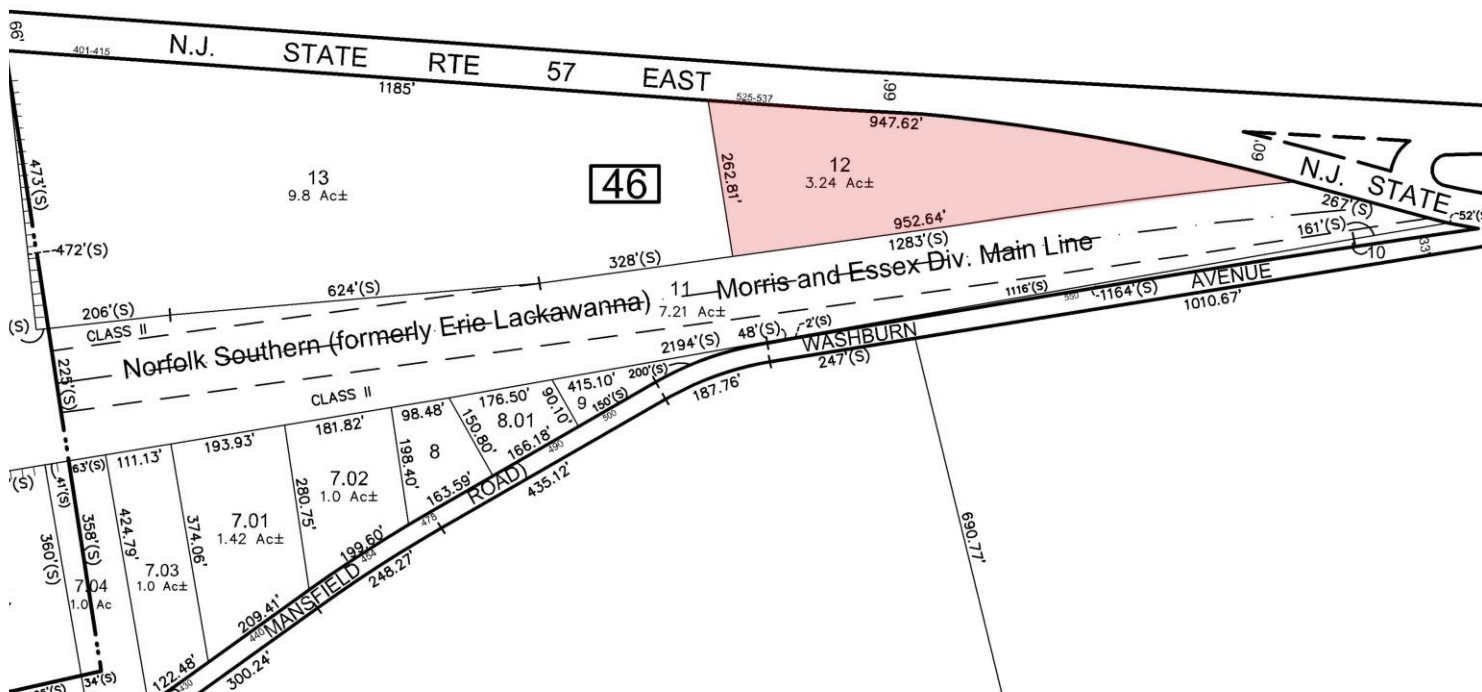
For additional property information or to arrange an inspection, please contact the exclusive brokers:

Jason M. Crimmins, CCIM, SIOR
President
973.379.6644 x 122
jmcrimmins@blauberg.com

Alessandro (Alex) Conte, CCIM, SIOR
Executive Vice President
973.379.6644 x 131
aconte@blauberg.com

Peter J. Murano, Jr., SIOR
Managing Executive Director
973.379.6644 x 114
pjmurano@blauberg.com

Nicholas Bio
Associate
973.379.6644 x 233
nbio@blauberg.com



For additional property information or to arrange an inspection, please contact the exclusive brokers:

Jason M. Crimmins, CCIM, SIOR
President
973.379.6644 x 122
jmcrimmins@blauberg.com

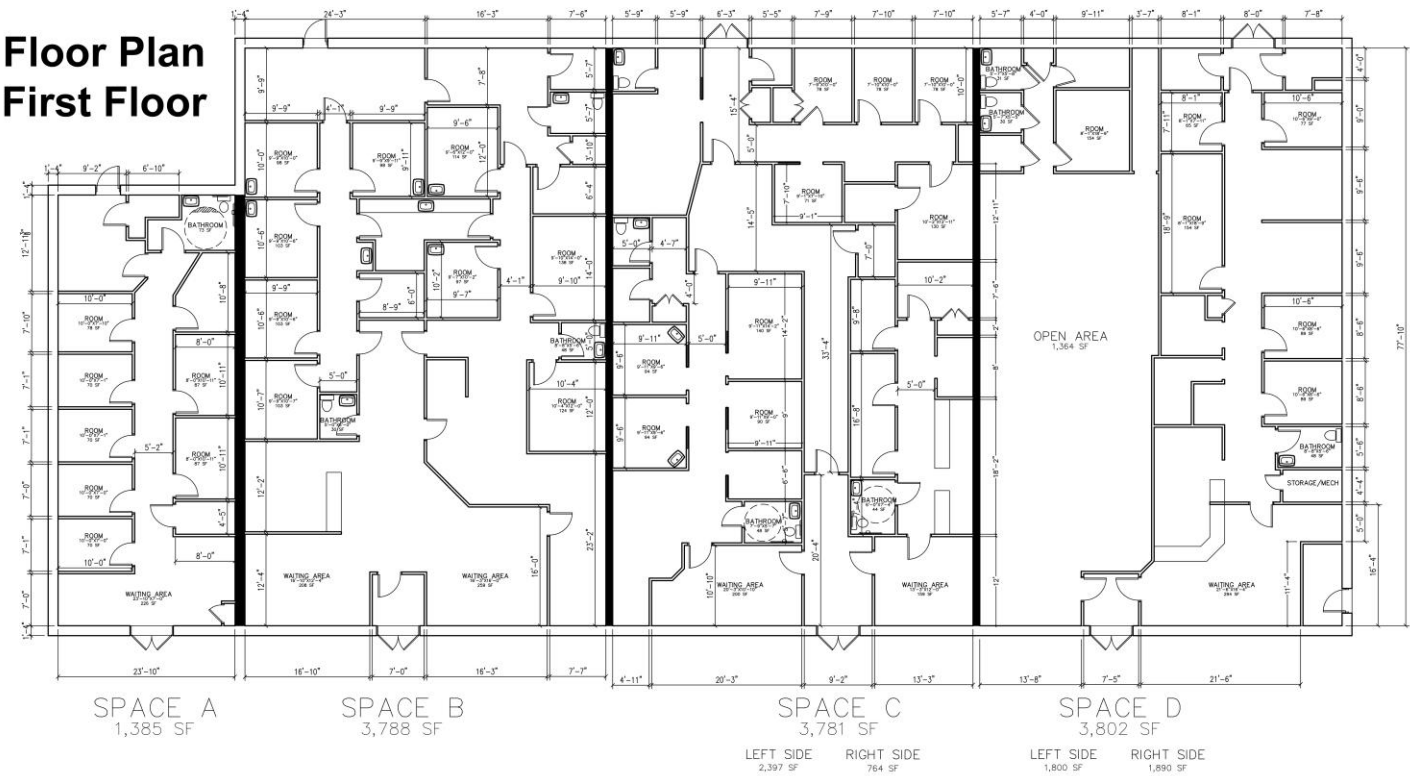
Alessandro (Alex) Conte, CCIM, SIOR
Executive Vice President
973.379.6644 x 131
aconte@blauberg.com

Peter J. Murano, Jr., SIOR
Managing Executive Director
973.379.6644 x 114
pjmurano@blauberg.com

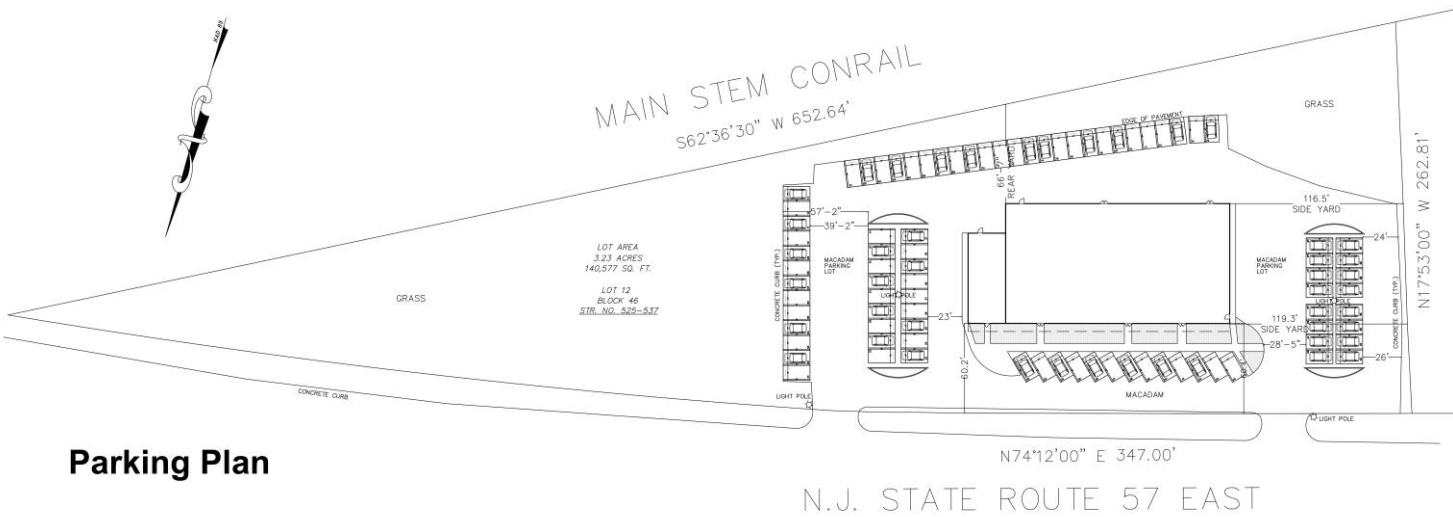
Nicholas Bio
Associate
973.379.6644 x 233
nbio@blauberg.com

The information contained herein has been obtained from sources considered to be reliable, but no guarantee of its accuracy is made by this company. In addition, no representation is made respecting zoning, condition of title, dimensions, or any matters of a legal or environmental nature. Such matters should be referred to legal counsel for determination. Terms and conditions are subject to change without prior notice. Subject to errors and omissions.

Floor Plan
First Floor



Parking Plan



For additional property information or to arrange an inspection, please contact the exclusive brokers:

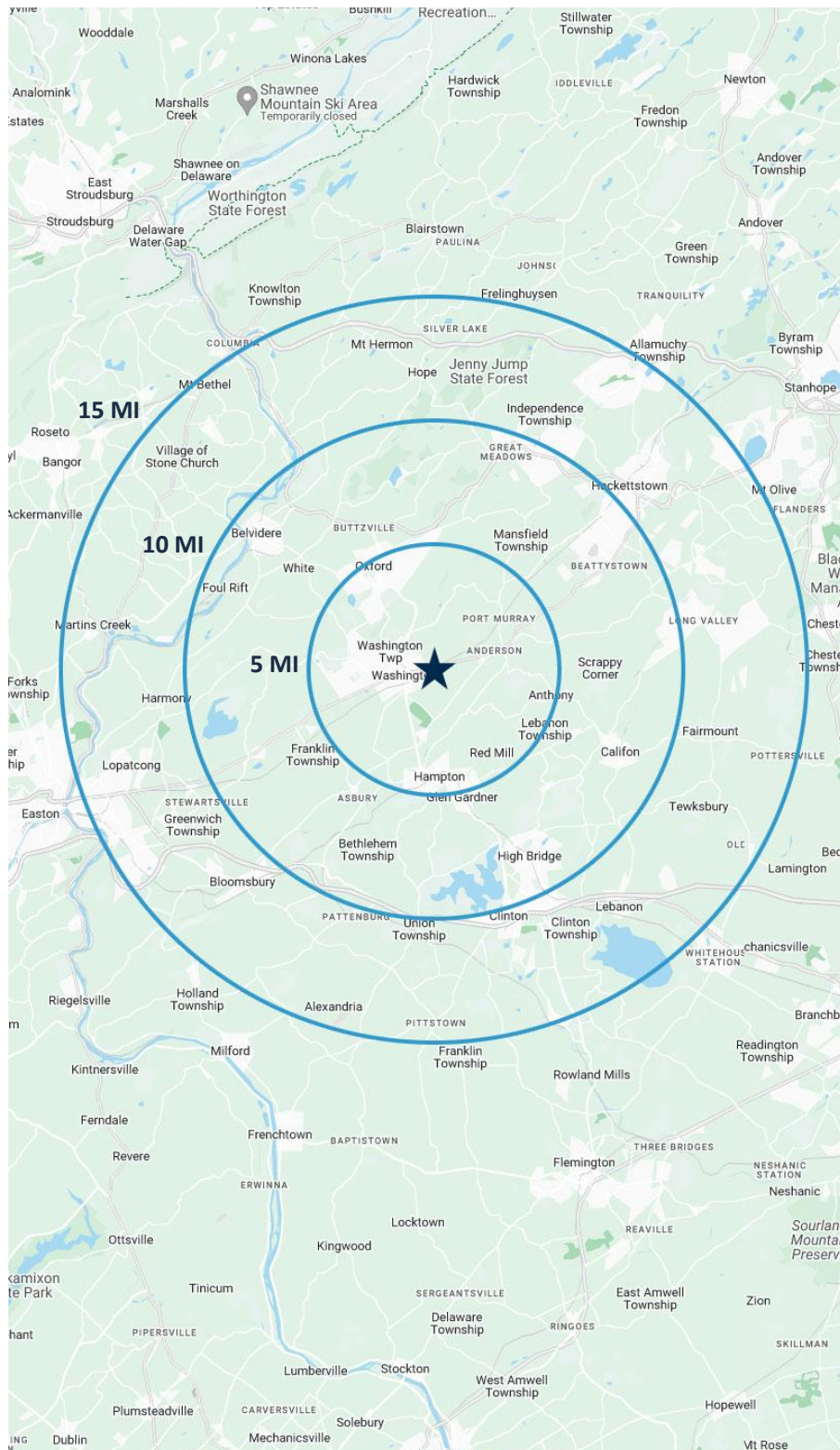
Jason M. Crimmins, CCIM, SIOR
President
973.379.6644 x 122
jmcrimmins@blauberg.com

Alessandro (Alex) Conte, CCIM, SIOR
Executive Vice President
973.379.6644 x 131
aconte@blauberg.com

Peter J. Murano, Jr., SIOR
Managing Executive Director
973.379.6644 x 114
pjmurano@blauberg.com

Nicholas Bio
Associate
973.379.6644 x 233
nbio@blauberg.com

The information contained herein has been obtained from sources considered to be reliable, but no guarantee of its accuracy is made by this company. In addition, no representation is made respecting zoning, condition of title, dimensions, or any matters of a legal or environmental nature. Such matters should be referred to legal counsel for determination. Terms and conditions are subject to change without prior notice. Subject to errors and omissions.



5 MILES

- Total Population: 27,137
- Households: 11,052
- Median Household Income: \$102,526
- Average Household Size: 2.4
- Transportation to Work: 15,143
- Labor Force: 23,080

10 MILES

- Total Population: 104,079
- Households: 40,273
- Median Household Income: \$120,163
- Average Household Size: 2.5
- Transportation to Work: 55,422
- Labor Force: 88,737

15 MILES

- Total Population: 281,924
- Households: 108,332
- Median Household Income: \$121,677
- Average Household Size: 2.5
- Transportation to Work: 151,198
- Labor Force: 238,252

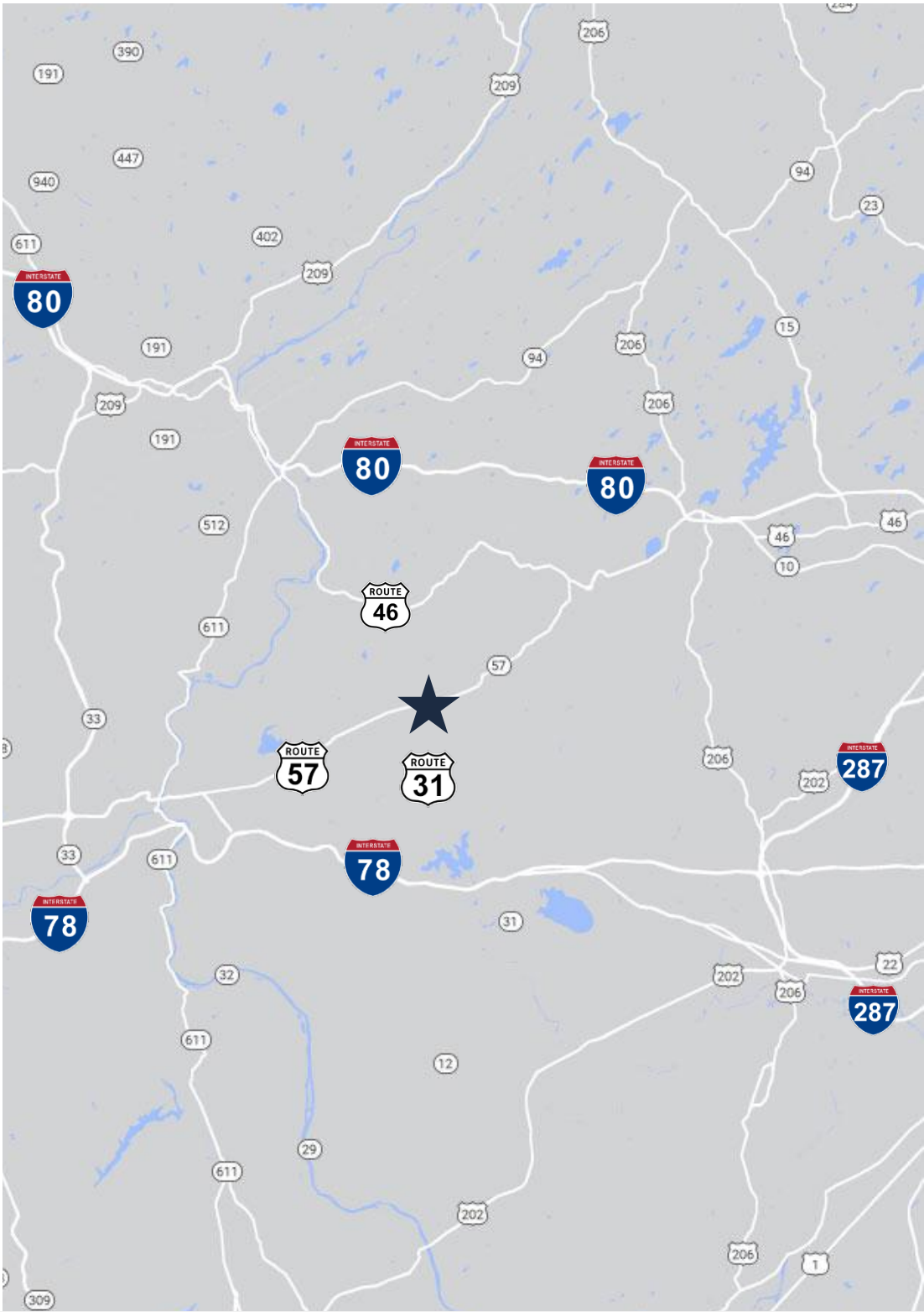
For additional property information or to arrange an inspection, please contact the exclusive brokers:

Jason M. Crimmins, CCIM, SIOR
President
973.379.6644 x 122
jmcrimmins@blauberg.com




Alessandro (Alex) Conte, CCIM, SIOR
Executive Vice President
973.379.6644 x 131
aconte@blauberg.com

Peter J. Murano, Jr., SIOR
Managing Executive Director
973.379.6644 x 114
pjmurano@blauberg.com

Nicholas Bio
Associate
973.379.6644 x 233
nbio@blauberg.com



ACCESSIBILITY

	1.0 MI Route 32
	6.7 MI Route 46
	17.7 MI I-78
	16.8 MI I-80
	24.6 MI I-287

For additional property information or to arrange an inspection, please contact the exclusive brokers:

Jason M. Crimmins, CCIM, SIOR
President
973.379.6644 x 122
jmcrimmins@blauberg.com

Alessandro (Alex) Conte, CCIM, SIOR
Executive Vice President
973.379.6644 x 131
aconte@blauberg.com

Peter J. Murano, Jr., SIOR
Managing Executive Director
973.379.6644 x 114
pjmurano@blauberg.com

Nicholas Bio
Associate
973.379.6644 x 233
nbio@blauberg.com

The information contained herein has been obtained from sources considered to be reliable, but no guarantee of its accuracy is made by this company. In addition, no representation is made respecting zoning, condition of title, dimensions, or any matters of a legal or environmental nature. Such matters should be referred to legal counsel for determination. Terms and conditions are subject to change without prior notice. Subject to errors and omissions.