

SKEES ROAD INDUSTRIAL PARK



1,500 SF OFFICE / WAREHOUSE AND LOT FOR LEASE 1486 SKEES ROAD, UNIT E WEST PALM BEACH, FL 33411

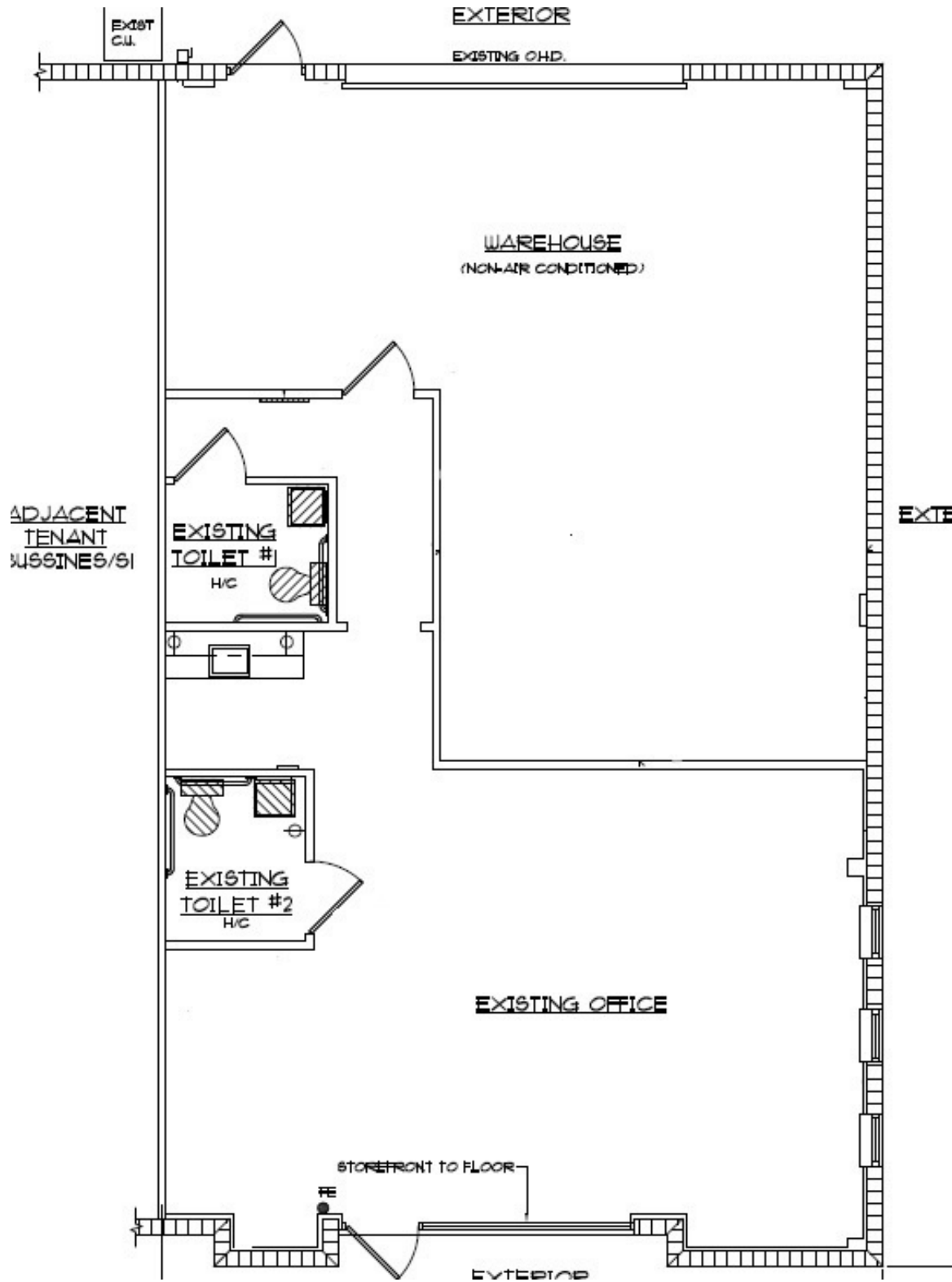
Zoning:	Industrial
Property Type:	Office /Warehouse
Space Available:	1,500 SF
Min Divisible:	1,500 SF
Base Monthly Rent:	\$3,172.50
Lease Rate PSF Annual:	\$18.50
Lease Type:	NNN
Operating Expenses PSF:	\$6.88

This 1,500 SF Office/Warehouse consists of approx. 800 SF of office and 700 SF of warehouse space. The office area has a break room and a restroom. The warehouse has 18' ceilings, and one 14'x14' overhead door.



Great Location! 3 Phase electric! This industrial complex consists of 9 buildings totaling 73,000 sf. The buildings are CBS and metal construction. Each unit has a glass storefront entrance and 14 X 14 foot Grade Level Roll-up Doors. Ceiling heights are 18 to 21 ft Clear. Great Location for a variety of businesses! This complex is located on the east side of Skees Road in between Belvedere Road and Okeechobee Boulevard. Directly across from the Hippocrates Health Institute.

Floor Plan





Cornerstone Realty, Inc
8233 Gator Lane, Suite 18
West Palm Beach, FL 33411
(561)793-9810
www.cri-re.com



Contact: Devin Schmidt
devin@cri-re.com
561-793-9810