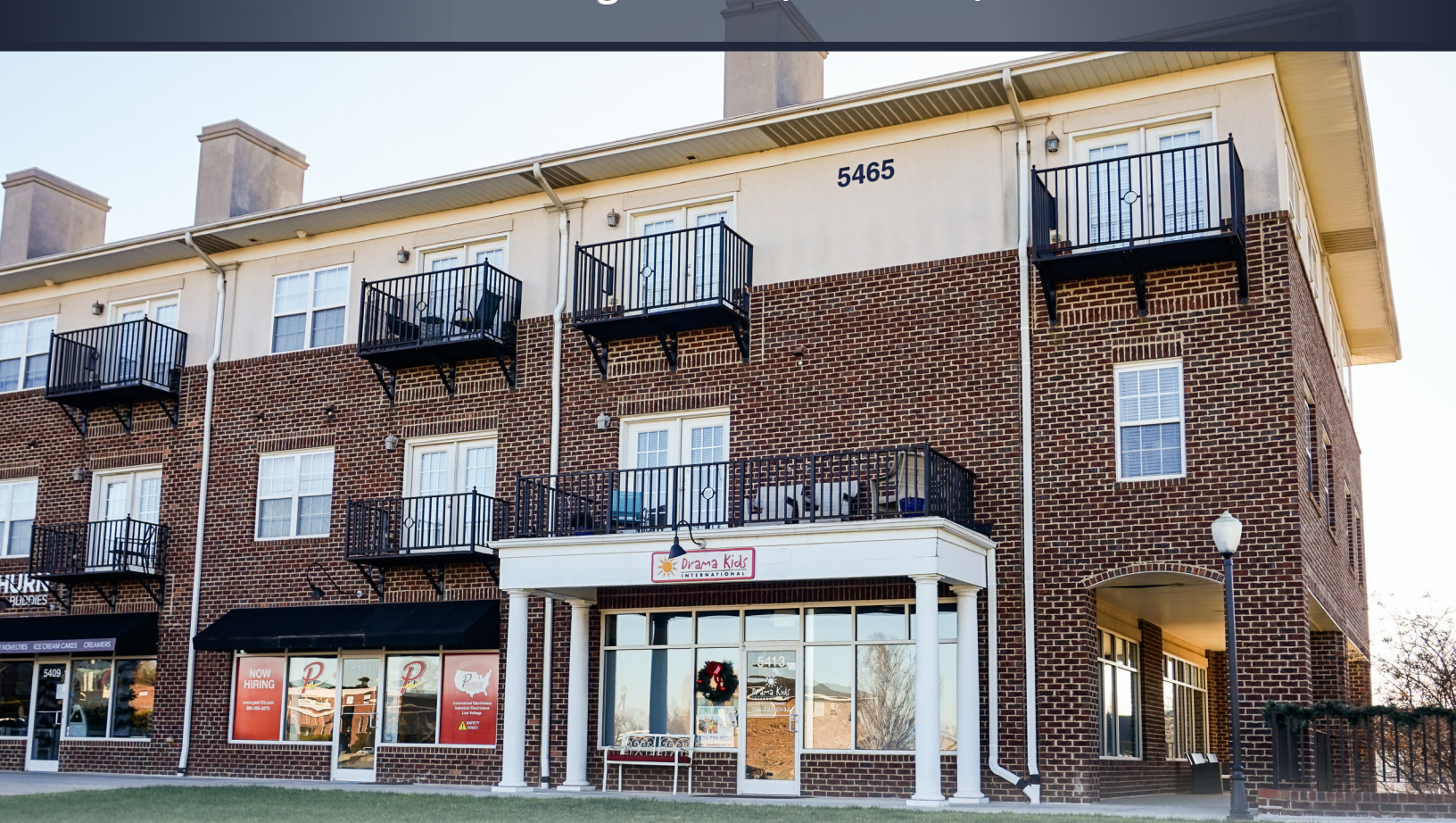


Afton Village

5411 - 5413 Village Dr Nw, Concord, NC 28027



±2,400 SF Retail / Office Condo Available For Sale

- **Unit 5411:** Tenant in place until May 2028
- **Unit 5413:** Tenant in place until May 2031

ASKING PRICING: \$850,000



Lem Doss
Associate
704 285 2069
lem.doss@avisonyoung.com

Zach Simpson
Vice President
704 315 5091
zach.simpson@avisonyoung.com

**AVISON
YOUNG**

RETAIL / OFFICE CONDO INVESTMENT

5413 Village Dr NW, Concord, NC 28027



Located in Afton Village

Afton Village in Concord, North Carolina, is a mixed-use development that seamlessly blends residential, commercial, and recreational spaces. This community-oriented project is designed to offer a diverse range of amenities within a cohesive living environment. The Chesterfield Building is a 3-story residential-over-commercial building located directly on Village Dr, just minutes from Interstate 85.

NEIGHBORING TENANTS:

- E Noodles Asian Bistro
- Smoothie King
- The Gateway to Athens
- Village Corner Comfort Kitchen
- Afton Dental
- Afton Cleaners
- FastMed Urgent Care
- Rowan Cabarrus YMCA
- Atrium Health
- Modern Eye Care
- Edible Arrangements
- Afton Pub & Pizza
- The Wine Room
- 9Round
- Solace Yoga
- Dance Expressions
- Drama Kids
- Afton Tavern
- Primrose School
- QuickTrip

For more information:

Lem Doss

Associate

704 285 2069

lem.doss@avisonyoung.com

Zach Simpson

Vice President

704 315 5091

zach.simpson@avisonyoung.com

**AVISON
YOUNG**