

TIFFANY PLAZA

7121-7165 TIFFANY BLVD
BOARDMAN, OHIO 44514

Cleveland Clinic
Star Imaging

33-472 VPD

INTERSTATE
680

Youngstown
SKATE

Marc's
Fresh. Savory. Smart. Living.

WINDOW DEPOT

AT&T

CATULLO
PRIME
MEATS

QUALITY MATTRESS

AVAILABLE

SHERWIN-WILLIAMS

Classic Bakery

THE MOCHA
HOUSE
CAFE & PATISSERIE

American Renal Associates
Boardman Dialysis Center

FIT BODY
BOOT CAMP

POP
JUICE AND SMOOTHIE BAR

TWIN PEAKS
RESTAURANT & BAR

HOBBY
LOBBY

THE FEATHER
FAR
OUTFITTERS

Marshalls

ASHLEY

TIFFANY BLVD

POTENTIAL OUTPARCEL
OPPORTUNITY

RED LOBSTER
FRESH FISH - LIVE LOBSTERS



Aspendental
Sport Clips
HAIRCUTS
OUTBACK
STEAKHOUSE

Anchor
CLEVELAND

ALLISON GIOMUSO
216.342.2620
agiomuso@anchorcleveland.com

VICTOR KIRALLAH
216.342.2626
vkirallah@anchorcleveland.com

CLICK TO VIEW ON
GOOGLEMAPS



RETAIL SPACE AVAILABLE

7121-7165 TIFFANY BLVD, BOARDMAN, OHIO 44514



HIGHLIGHTS

- ▶ 2,216 SF retail space available
- ▶ Potential +/- 0.92 acre outparcel opportunity at Tiffany Plaza
- ▶ Anchored by Marc's with co-tenants including Sherwin Williams, Mattress Warehouse, Window Depot, AT& T, Pulp Juice & Smoothie Bar, and more
- ▶ Located in one of two major retail hubs in the Mahoning Valley with convenient highway access to I-680
- ▶ Signalized entryway at the intersection of Boardman-Poland Road (US-224) and Tiffany Blvd
- ▶ Join other major area retailers including Walmart Supercenter, Lowe's, Target, Kohl's, Dick's Sporting Goods, TJ Maxx & HomeGoods, Marshalls, Big Lots, Giant Eagle Supermarket, PetSmart, Hobby Lobby and many more!

ALLISON GIOMUSO
216.342.2620
agiomuso@anchorcleveland.com

VICTOR KIRALLAH
216.342.2626
vkirallah@anchorcleveland.com

216.342.2523
www.anchorcleveland.com

Anchor
CLEVELAND

RETAIL SPACE AVAILABLE

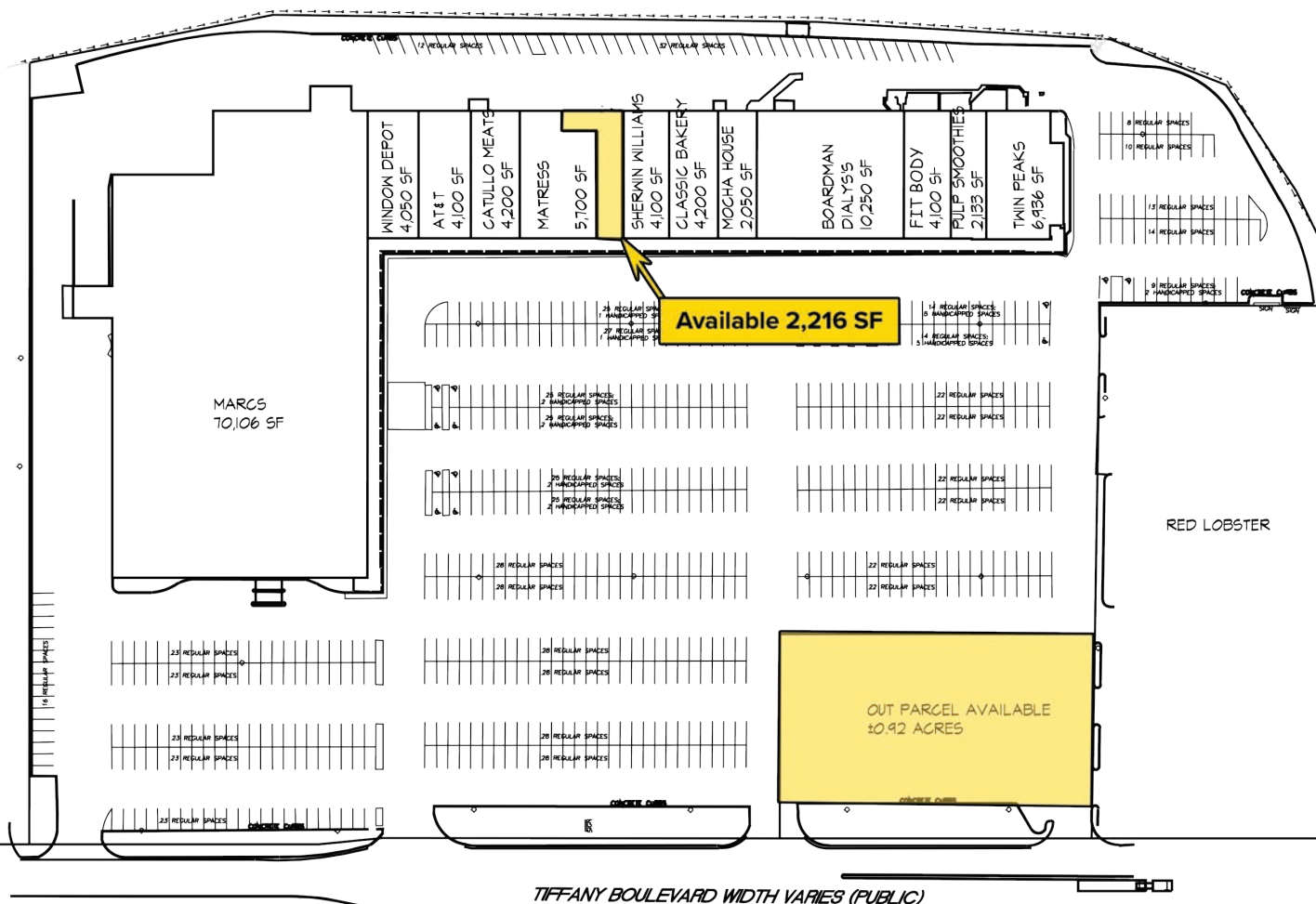
7121-7165 TIFFANY BLVD, BOARDMAN, OHIO 44514

SITE PLAN

NTS



INTERSTATE 680 (PUBLIC)

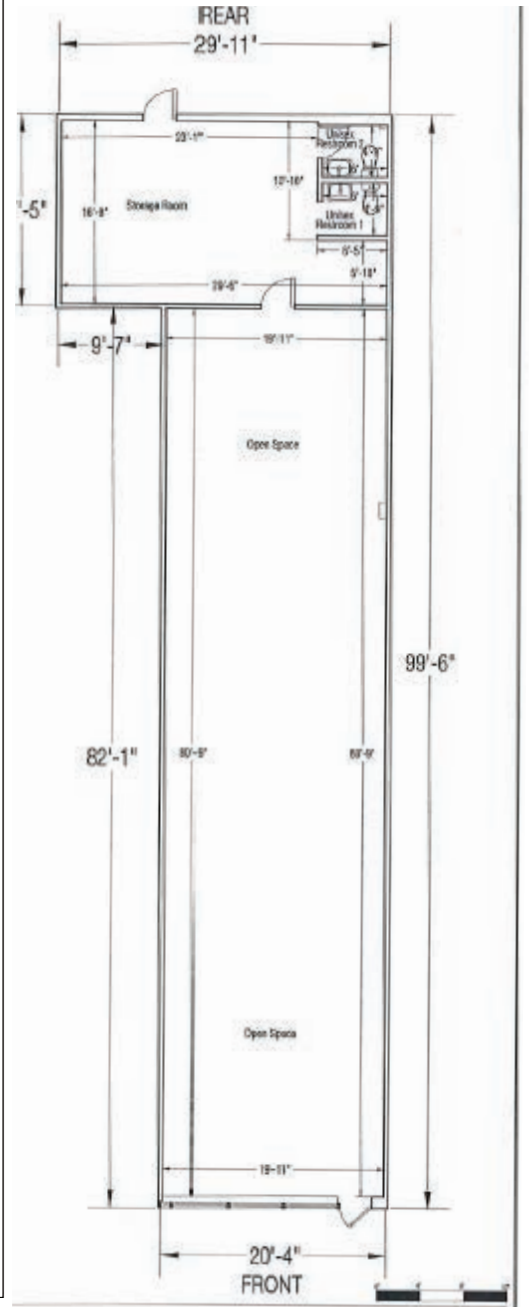


Available 2,216 SF

OUT PARCEL AVAILABLE
±0.92 ACRES

TIFFANY BOULEVARD WIDTH VARIES (PUBLIC)

BOARDMAN POLAND ROAD (US 224) WIDTH VARIES (PUBLIC)



ALLISON GIOMUSO
216.342.2620
agiomuso@anchorcleveland.com

VICTOR KIRALLAH
216.342.2626
vkirallah@anchorcleveland.com

216.342.2523
www.anchorcleveland.com



RETAIL SPACE AVAILABLE

7121-7165 TIFFANY BLVD, BOARDMAN, OHIO 44514



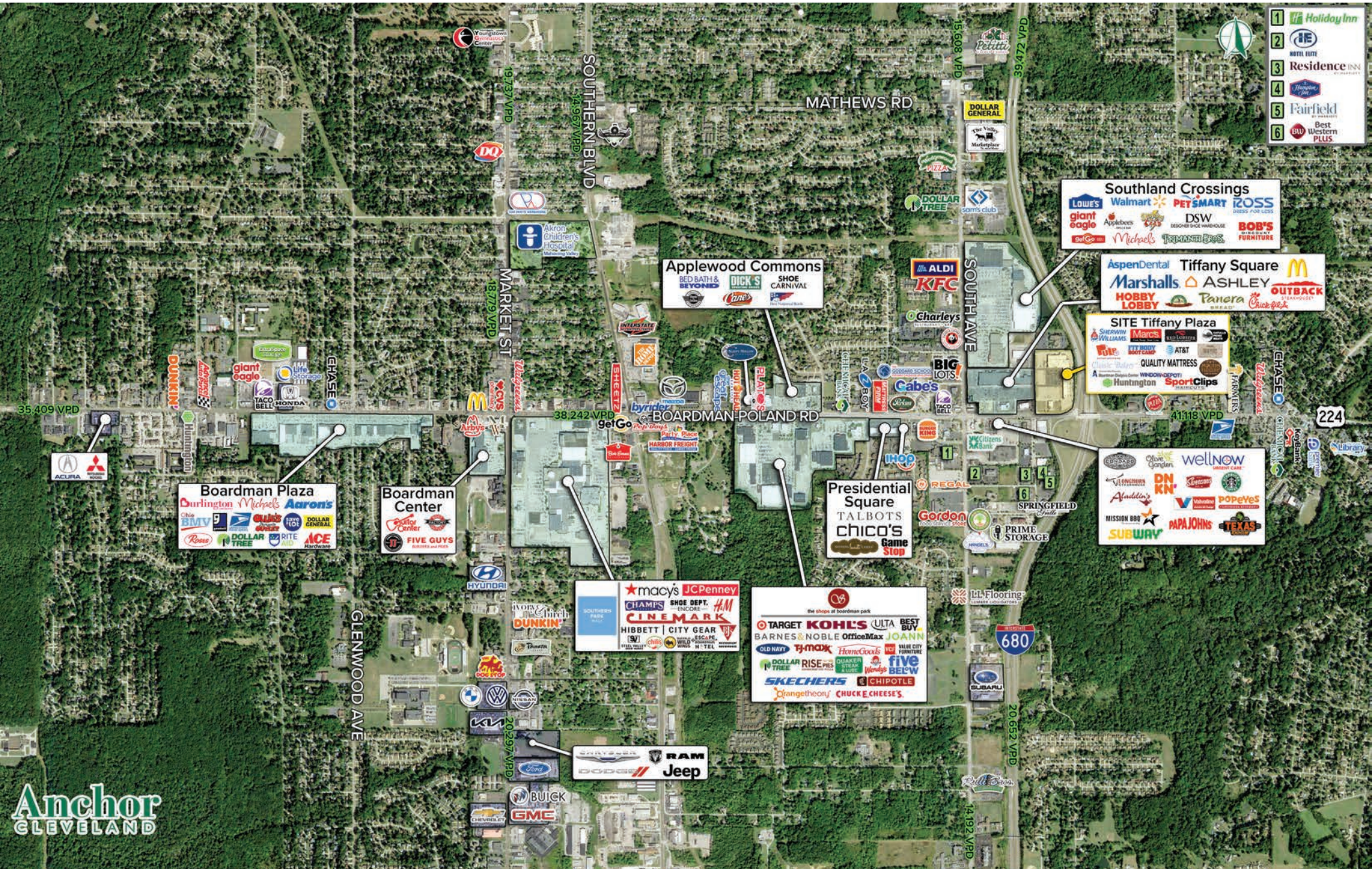
ALLISON GIOMUSO
216.342.2620
agiomuso@anchorcleveland.com

VICTOR KIRALLAH
216.342.2626
vkirallah@anchorcleveland.com

216.342.2523
www.anchorcleveland.com
Anchor
CLEVELAND

RETAIL SPACE AVAILABLE

7121-7165 TIFFANY BLVD, BOARDMAN, OHIO 44514



ALLISON GIOMUSO
216.342.2620
agiomuso@anchorcleveland.com

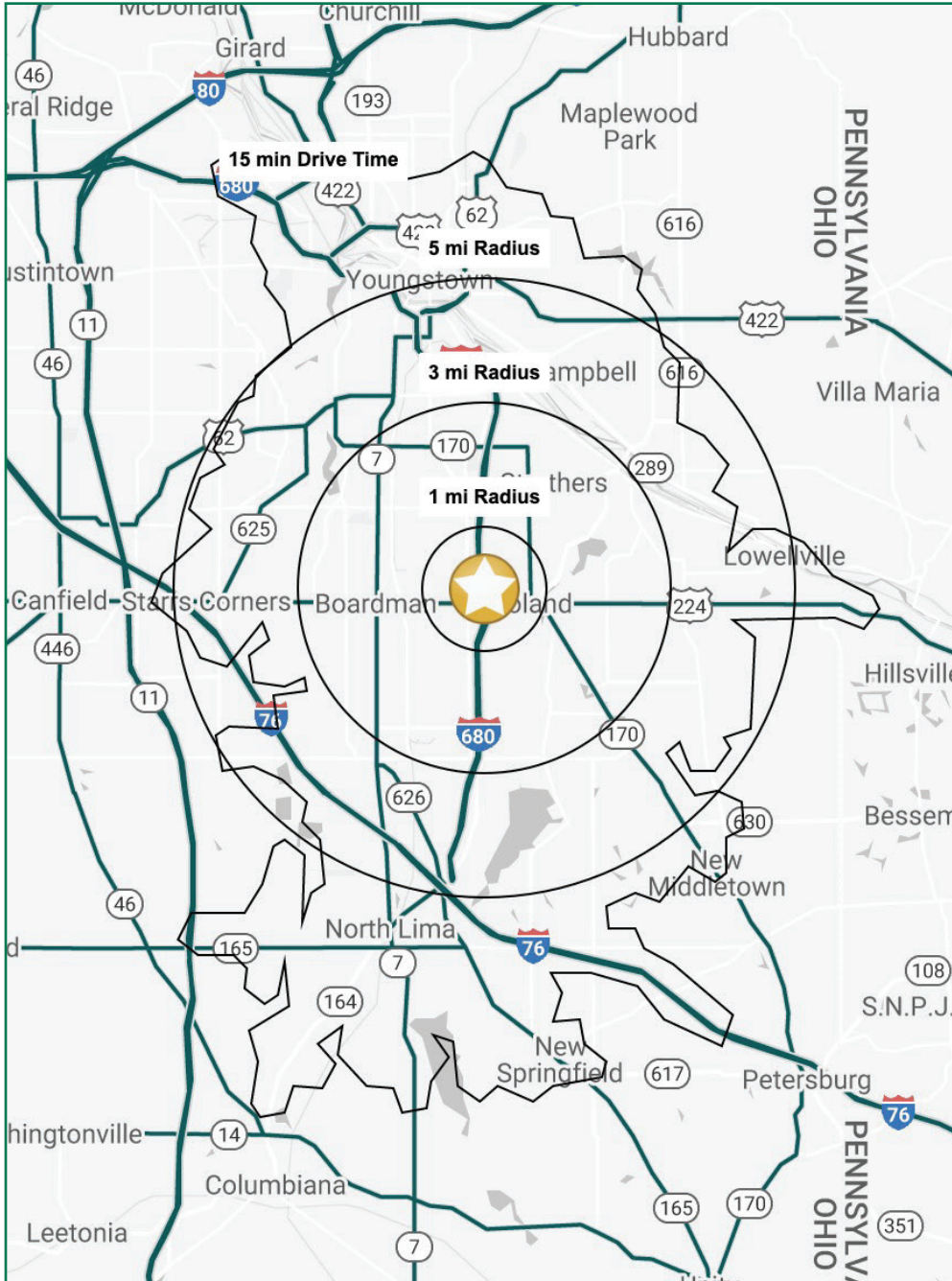
VICTOR KIRALLAH
216.342.2626
vkirallah@anchorcleveland.com

216.342.2523
www.anchorcleveland.com



RETAIL SPACE AVAILABLE

7121-7165 TIFFANY BLVD, BOARDMAN, OHIO 44514



DEMO SNAPSHOT

	1 MILE	3 MILES	5 MILES	15 MIN DRIVE
POPULATION	5,069	58,663	10,695	128,858
HOUSEHOLDS	2,242	25,782	46,708	55,526
MEDIAN AGE	48.4	44.9	44.6	43.4
AVERAGE HH INCOME	\$79,155	\$70,310	\$67,209	\$64,923
MEDIAN HH INCOME	\$66,407	\$57,378	\$53,115	\$50,316
BUSINESSES	442	2,473	4,092	5,080
EMPLOYEES	5,427	29,951	46,021	70,898
EDUCATION: BACHELORS +	35.2%	28.0%	26.1%	24.6%

Demographics ©2022 AGS

CONTACT

ALLISON GIOMUSO
216.342.2620
agiomuso@anchorcleveland.com

VICTOR KIRALLAH
216.342.2626
vkirallah@anchorcleveland.com



24500 Chagrin Blvd., Suite 100 | Beachwood, Ohio 44122
216.342.2523 | www.anchorcleveland.com

The information submitted herein is not guaranteed. Although obtained from reliable resources, it is subject to errors, omissions, prior sale and withdrawal from the market without notice. Anchor Cleveland, LLC, and its agents, associates, and employees make no guarantee, warranty, or representation of the property. All images contained here in are the property of Anchor Cleveland, LLC, and shall not be duplicated or reproduced without express written consent of Anchor Cleveland, LLC. © 2022