



# SmartEquity

Commercial Real Estate and Property Management

## **FOR LEASE** **Warehouse in** **Midtown**

---

**2730 Delmar Blvd, St. Louis, MO 63103**

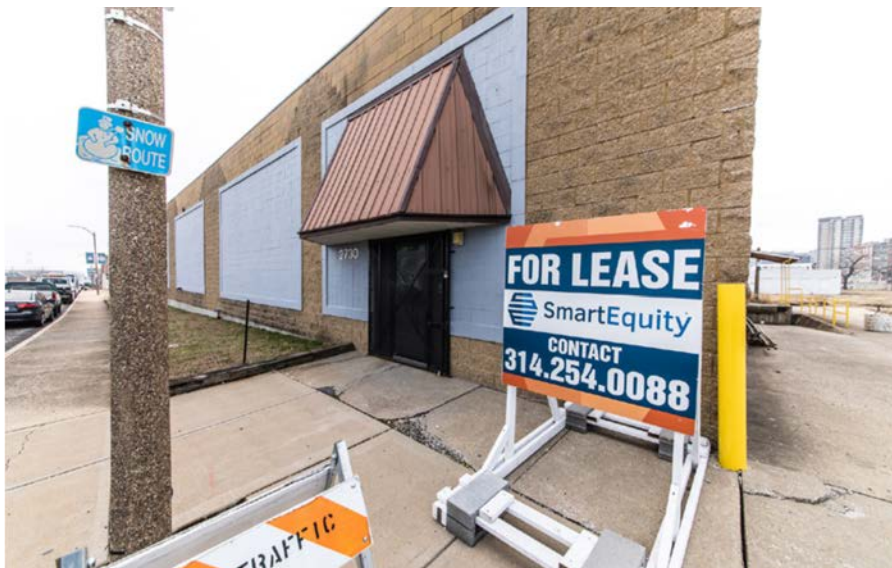
MALIK R. SIMMONS | 314.254.0088 | [Malik@bsmartequity.com](mailto:Malik@bsmartequity.com)

BRANDON K. SMART, CCIM, SIOR | 314.254.0088 | [Brandon@bsmartequity.com](mailto:Brandon@bsmartequity.com)

No expressed or implied warranty or representation is made as to the accuracy of the information contained herein. This property is submitted subject to errors, omissions, change of price, withdrawal without notice, prior lease or sale and any other listing conditions imposed by the principals.



## PROPERTY DETAILS



### INDUSTRIAL WAREHOUSE

Type

**URBAN**

Location

**15,000 SF**

Building Size

**27**

Parking

**18**

Clear Height

**WET**

Sprinklers

**1 EXT**

Docks

**J-INDUSTRIAL**

Zoning

**\$8.00 MODIFIED GROSS**

Base Rent