



OFFICE SPACE
FOR LEASE

FOR LEASE

2500 Crosspark Rd 2nd Floor, Coralville, Iowa

Discover unparalleled convenience and accessibility at our spacious office suite located in vibrant Coralville. Situated mere moments from Coral Ridge Mall and the pivotal I-80/I-380 interchange, this 16,500 square feet versatile space awaits your business. Take advantage of a generous tenant improvement allowance, enabling you to customize the entire suite to suit your unique needs. Ideal for a single business seeking a strategic location with ample room to grow.



REALTOR®

For more information on this property contact one of our listing agents:

Craig Byers, CCIM

319-360-7017

Jason Rogers, BROKER

319-361-3958

Austin Geasland, AGENT

319-893-3279

1950 Boyson Road
Hiawatha, Iowa 52233
319-294-3339

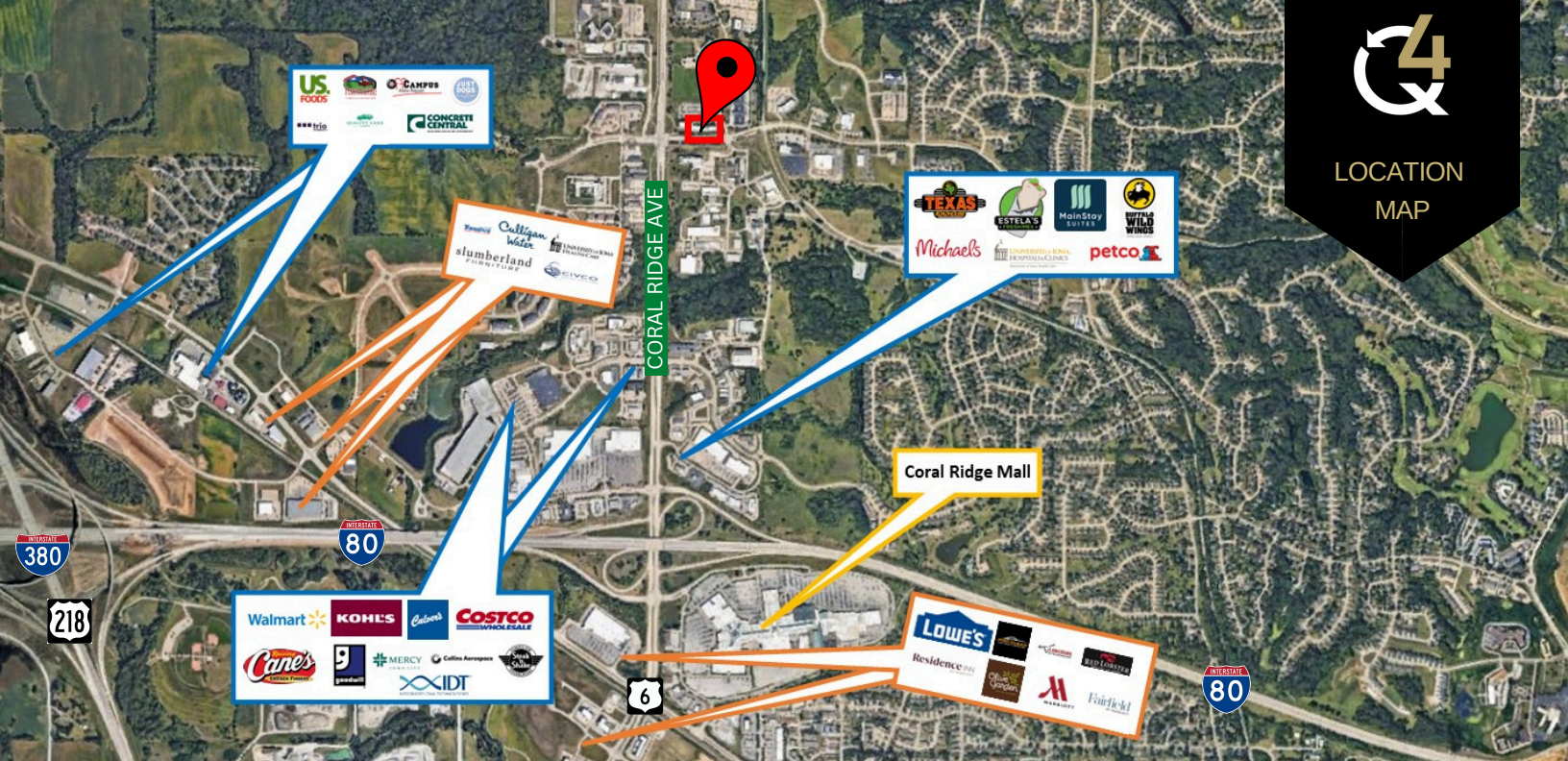
Q4realestate.com



REAL ESTATE
An Ahmann Company



LOCATION
MAP



2500 Crosspark Rd 2nd Floor, Coralville, Iowa

DETAILS

DETAILS

Square Footage: 8,000 - 16,500 SF

Lease Rate: \$12.50 PSF NNN

Est. Pass Throughs: \$11.95 PSF

Includes all expenses except desktop electrical, phone, data and suite janitorial

Healthy Tenant Improvement Allowance for Qualified Tenants

Zoning: C-Commercial

Year Built: 2008

LOCATION

Located in the University of Iowa Research Park at the corner of Hwy 965 and Oakdale Blvd.

SURROUNDING BUSINESS AND AMENITIES

University of Iowa Hospital and Clinics, Steindler Orthopedic Surgery Center, State Hygienic Laboratory at the U of I, Leepfrog Technologies, Creative Planning, Siemens, U of I Driving Safety Research Institute, U of I Rehabilitation Hospital, Oakdale Iowa Geological Survey, U of I IREH Building, Center for Biocatalysis and Bioprocessing, Integrated DNA Technologies, Myriad Technology Plaza, MediRevv, Veenstra & Kimm, Brighton Consulting Group

