

**BUILDING AND PARKING LOT**

**PRICE REDUCED!**



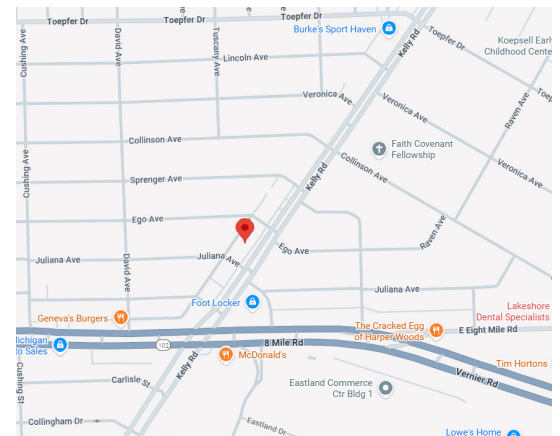
**PILOT**  
PROPERTY GROUP

**20927 KELLY ROAD, EASTPOINTE, MI 48021**

**PROPERTY OVERVIEW:**

- Former medical building for sale, including adjacent parking lot on Juliana
- Building has a full finished basement that is elevator equipped (not included in the square footage)
- Zoning permits office, retail, and personal service uses
- Building is in need of extensive interior improvements

Property Type: ..... Office/Retail  
Cross Streets: ..... West side of Kelly, between 8 and 9 Mile Rds  
Total Square Footage: ..... 4,197 plus finished basement  
Lot Size: ..... 0.382 Acres (both parcels)  
Year Built: ..... 1964  
Zoning: ..... MU-1 - Neighborhood Mixed Use  
Parking Spaces: ..... Approx. 20 plus Kelly Rd parking  
Property Taxes: ..... 2024: \$12,387.62  
Sale Price: ..... ~~\$225,000.00~~ **\$199,000 (\$47.41/SF)**



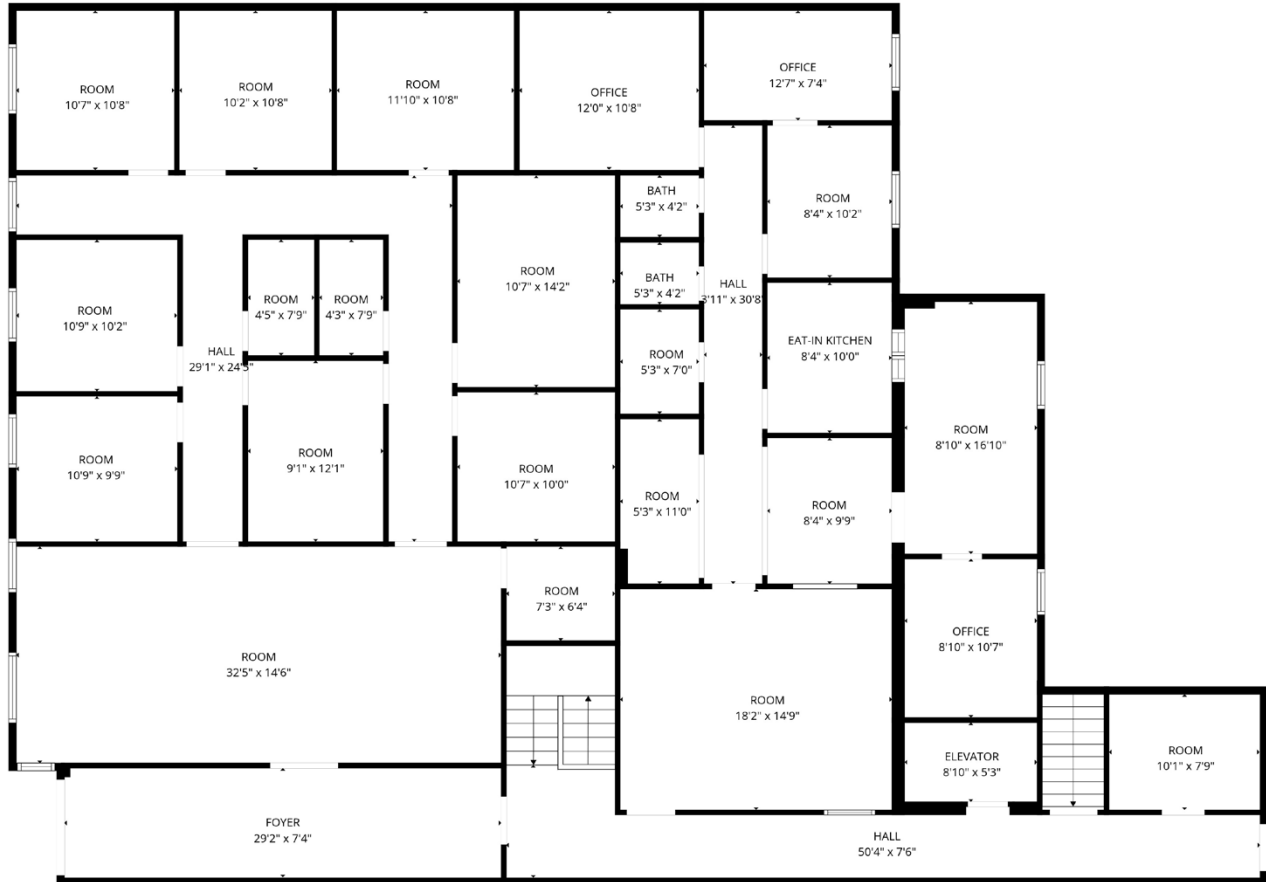
**AGENT CONTACT INFO**

**JIMMY DIEHL** O: 586.254.0900 x109 • C: 586.337.5241 • j.diehl@pilotpg.com  
**ALEX TERMINI** O: 586.254.0900 x104 • C: 586.291.0499 • alex@pilotpg.com

*Matching the right people to the right place.*

Offices in Sterling Heights and Port Huron to serve you  
586.254.0900 • www.pilotpg.com

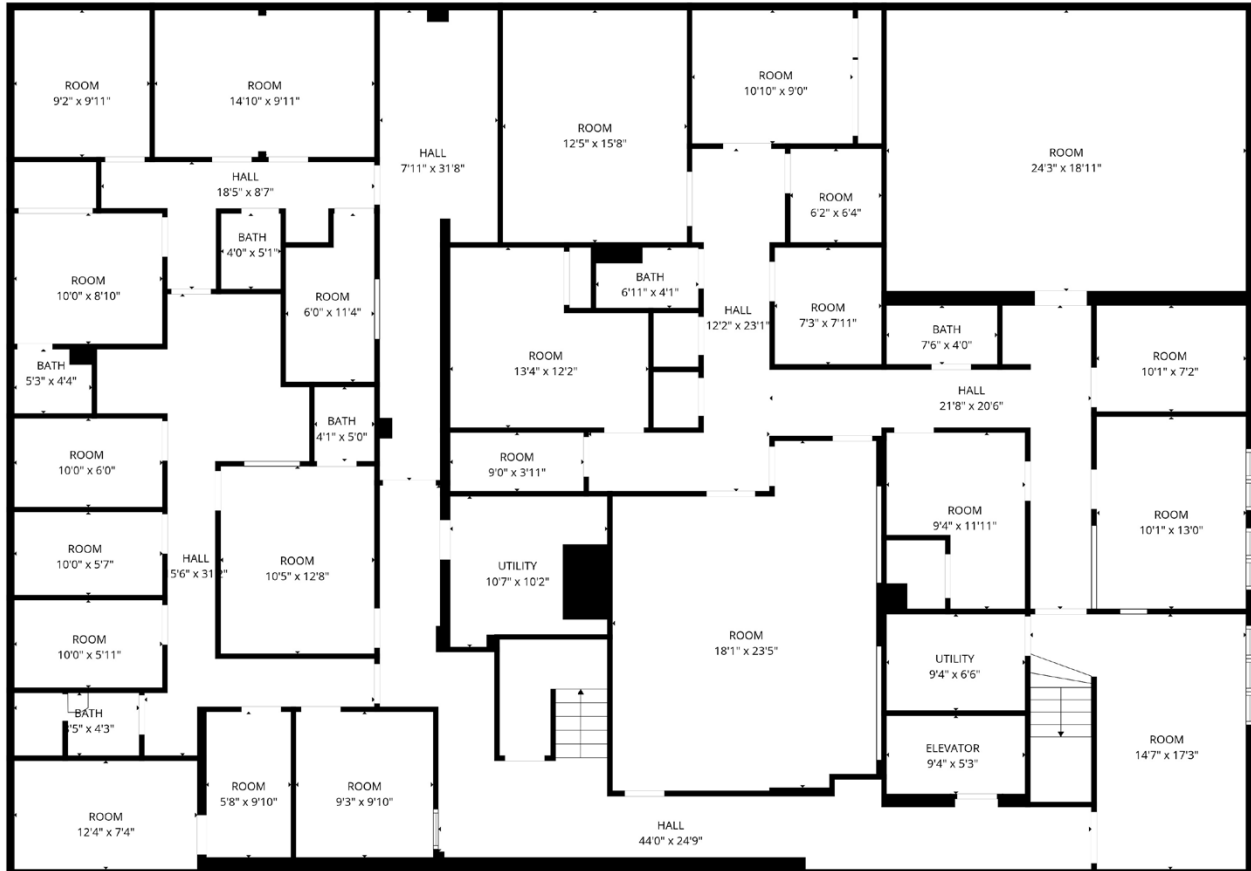
**FIRST FLOOR FLOORPLAN**



*Matching the right people to the right place.*

Offices in Sterling Heights and Port Huron to serve you  
586.254.0900 • [www.pilotpg.com](http://www.pilotpg.com)

**BASEMENT FLOORPLAN**



*Matching the right people to the right place.*

Offices in Sterling Heights and Port Huron to serve you  
586.254.0900 • [www.pilotpg.com](http://www.pilotpg.com)

**ADDITIONAL PHOTOS**



***Matching the right people to the right place.***

Offices in Sterling Heights and Port Huron to serve you  
586.254.0900 • [www.pilotpg.com](http://www.pilotpg.com)