

45

EAST 55TH STREET

BETWEEN PARK & MADISON AVENUES



INTERIOR
CONCEPTUAL RENDERING



SIZE: Ground Floor - Size Flexible
Lower Level - 5,227 SF
Sub-Lower Level - 5,288 SF

CEILING HEIGHTS: Lower Level - 12'6"
Sub-Lower Level - 7'11"

POSSESSION: Immediate

HIGHLIGHTS:

- Ideal health/wellness or restaurant/lounge opportunity in the heart of the Plaza District
- Can deliver additional ground floor space behind Gregory's Coffee
- Sub-Lower level is optional and can be used for selling
- Formerly Bally Total Fitness with locker rooms and swimming pool in Sub-Lower Level

NEIGHBORING TENANTS:

Vivienne
Westwood
Ferrari

sweetgreen®

—
nana
—
COFFEE. BAKERY. KITCHEN

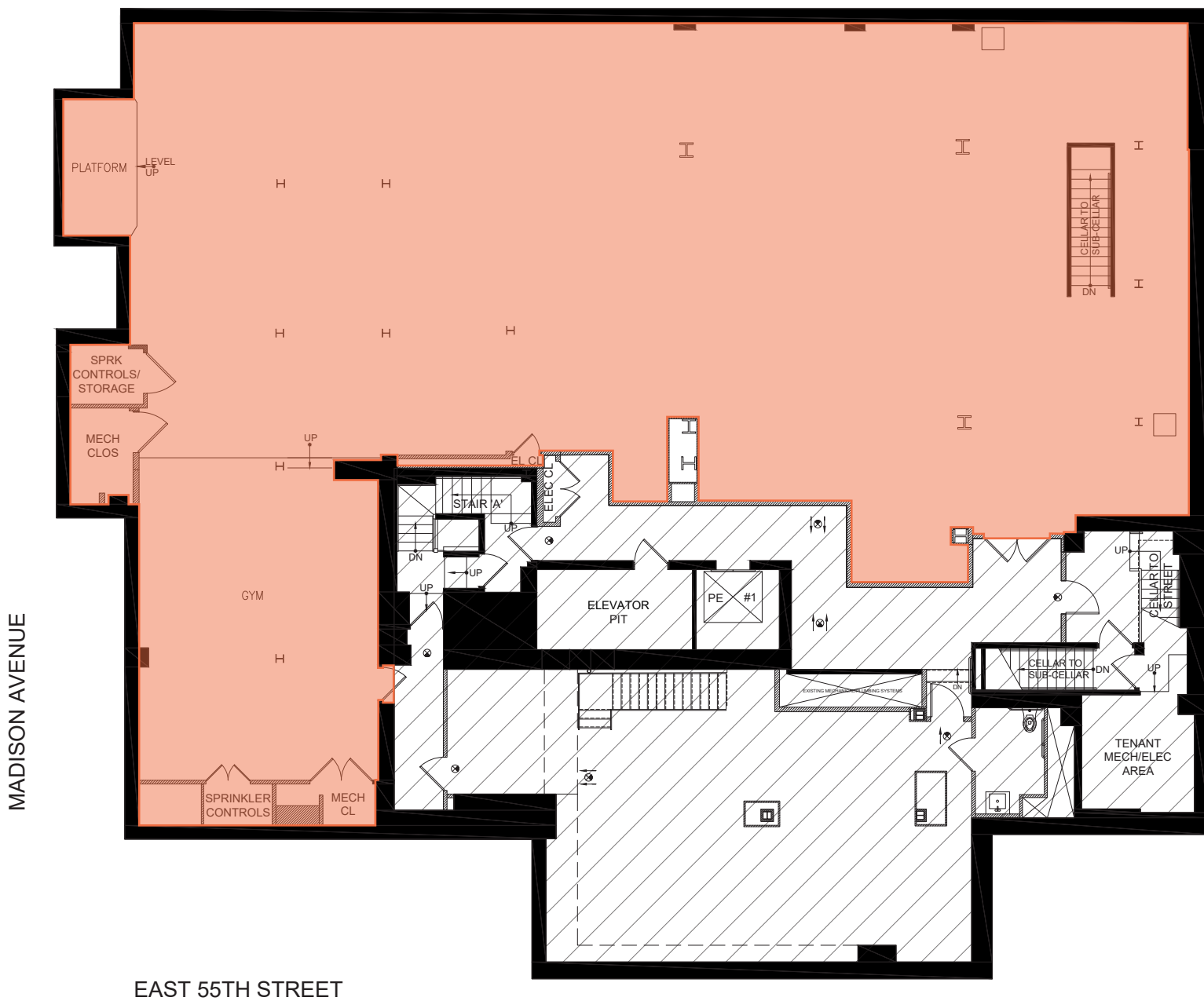


THE POLO BAR
RALPH LAUREN

THE KING COLE BAR

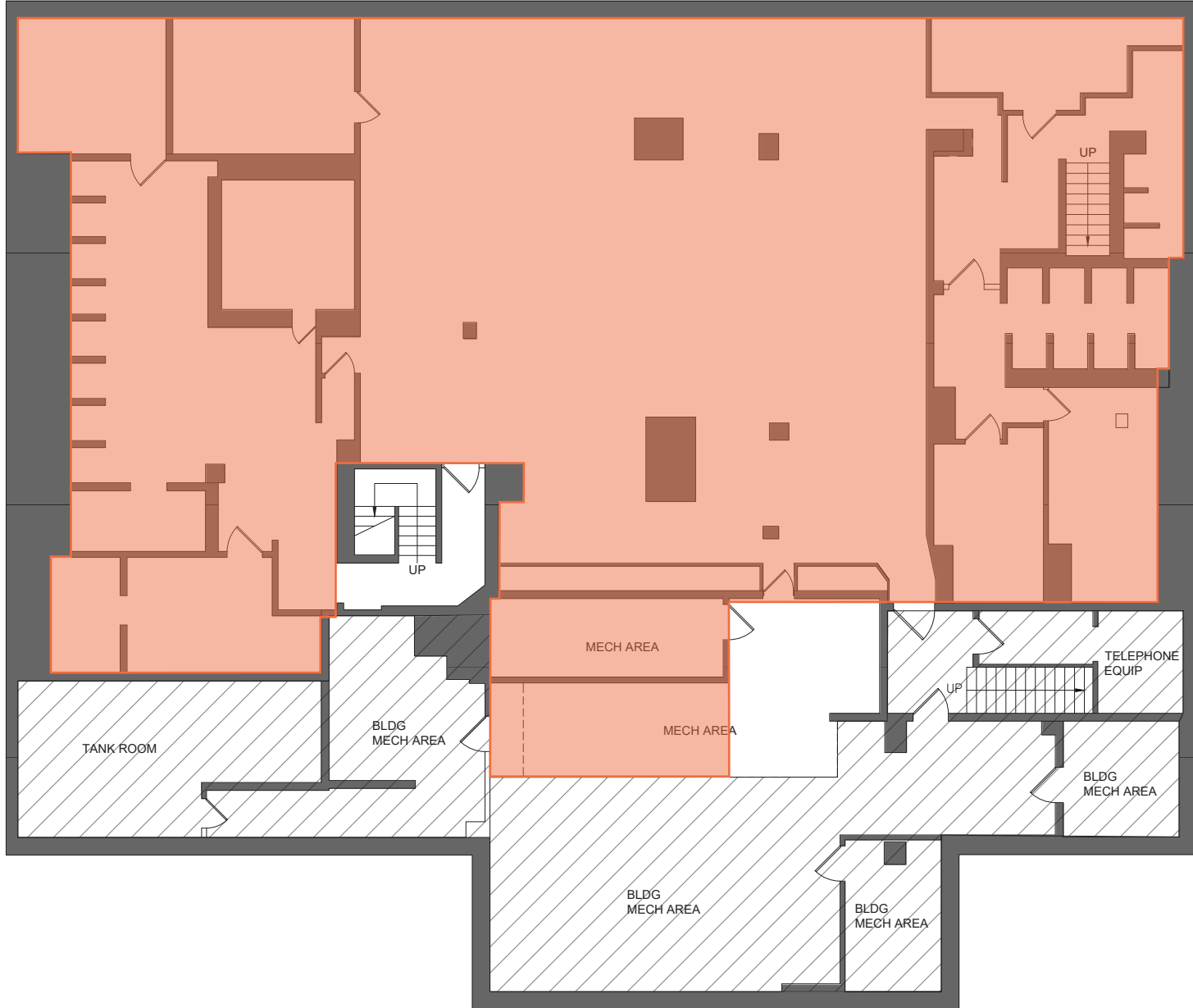
AQUAVIT

LOWER LEVEL



EAST 55TH STREET

SUB-LOWER LEVEL



EAST 55TH STREET

45

EAST 55TH STREET

THE HEART OF
THE PLAZA DISTRICT

FOR MORE INFORMATION,
PLEASE CONTACT:

ZACH NATHAN

240.731.8333 | ZNathan@ksrny.com

BRANDON BERGER

646.236.8525 | BBerger@ksrny.com

MARC SITT

646.869.5528 | MSitt@ksrny.com

