

37735 Enterprise Ct.

Farmington Hills, MI

4,274 SF & 5,448 SF AVAILABLE



Contact Us

Edward Wujek

Vice Chairman
+1 248 351 2058
edward.wujek@cbre.com

Philip Sprague

Vice President
+1 248 351 2032
philip.sprague@cbre.com

Kelly Cubbin

Vice President
+1 248 936 6852
kelly.cubbin@cbre.com

4,274 SF & 5,448 SF AVAILABLE
37735 Enterprise Ct, Farmington Hills, MI

For Lease

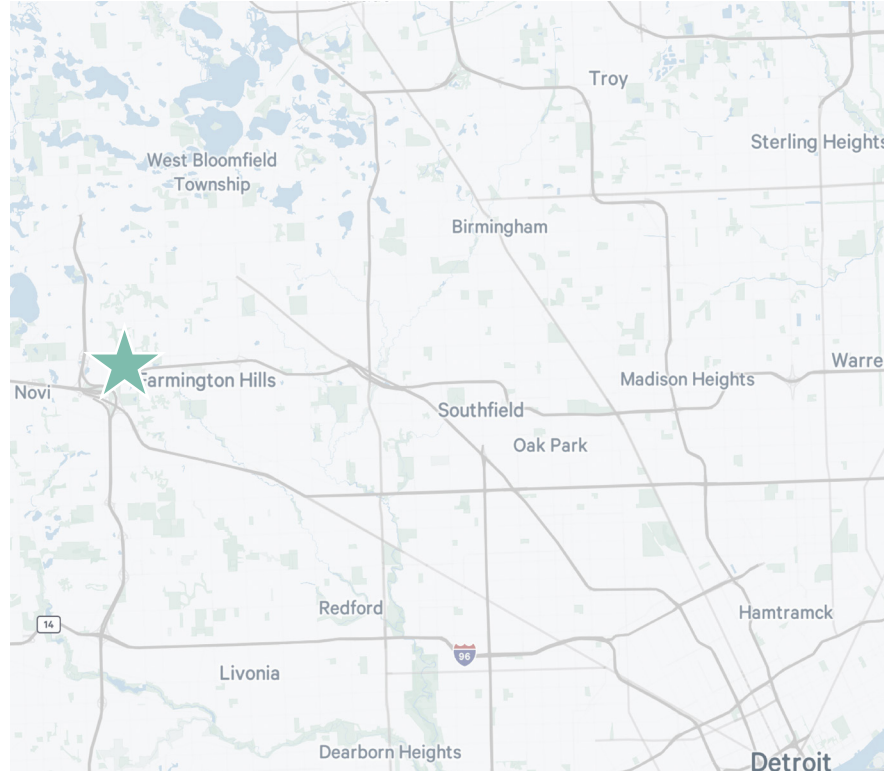
Property Features

4,274 SF &
5,448 SF

Available Square Footage

\$8.50 SF NNN

Lease Rate



Total Available	4,274 SF & 5,448 SF	Parking	40 Spaces
Availability	Immediate	Stories	One (1)
Year Built	1989	Zoning	IRO

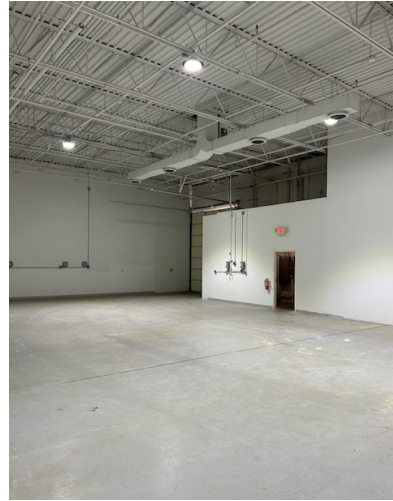
Comments

- Located in the M-5 Interchange and 12 Mile Road Corridor
- Signage Available
- Fully Air-Conditioned space
- Abundant Window Line
- 20' Clearance in Warehouse
- NNN's Estimates \$5.07/SF
- Each Suite Has Grade Level Access In Shop

4,274 SF & 5,448 SF AVAILABLE
37735 Enterprise Ct, Farmington Hills, MI

For Lease

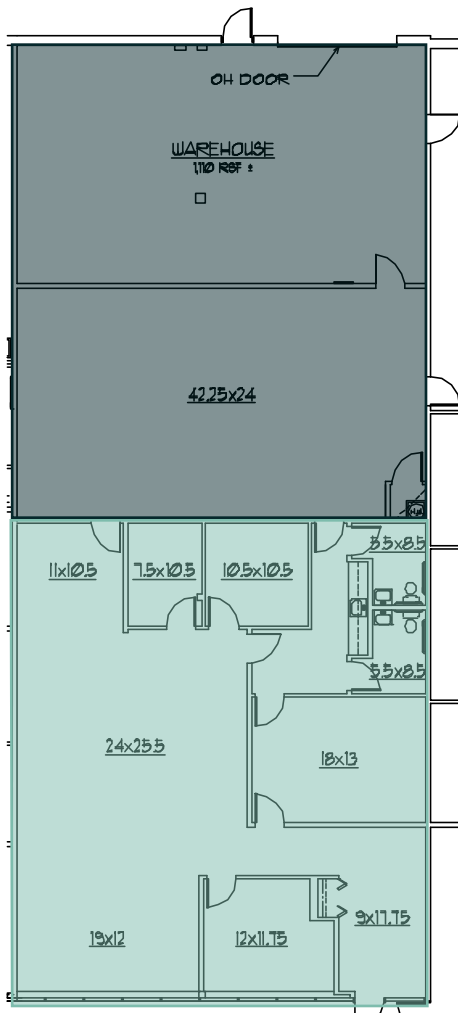
Floorplans



SUITE 200: 4,274 SF

- +/- 2,137 SF Office

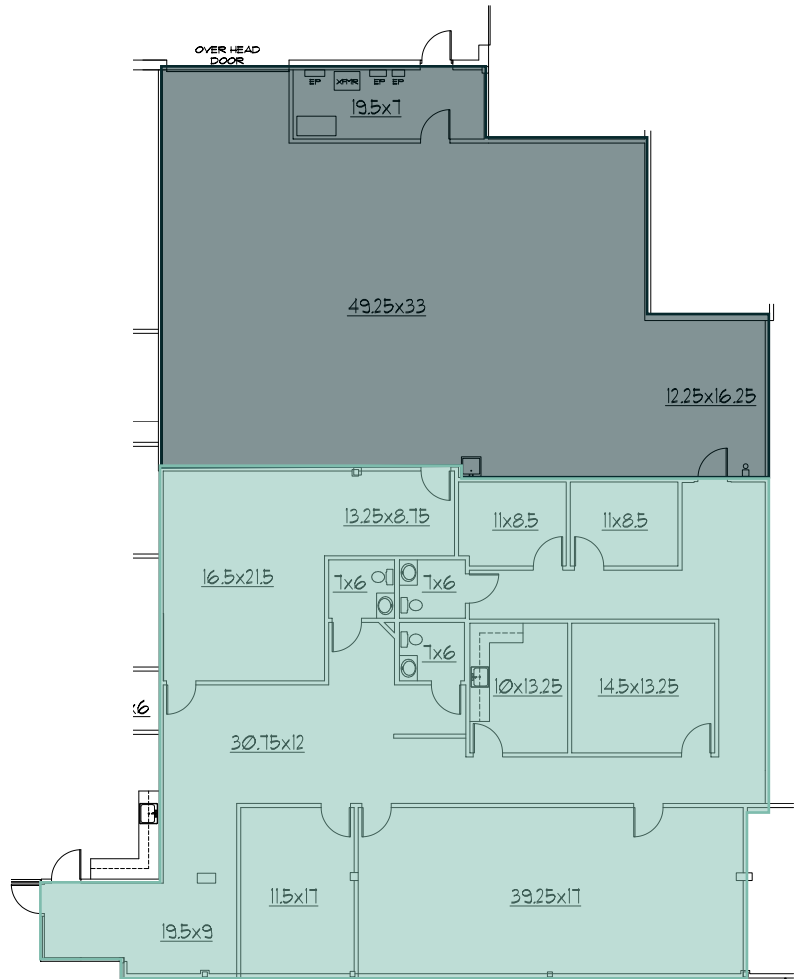
- +/- 2,137 SF Warehouse



SUITE 500: 5,448 SF

- 3,523 SF Office

- 1,925 SF Warehouse



4,274 SF & 5,448 SF AVAILABLE
37735 Enterprise Ct, Farmington Hills, MI

For Lease

Aerial



Contact Us

Edward Wujek

Vice Chairman

+1 248 351 2058

edward.wujek@cbre.com

Philip Sprague

Vice President

+1 248 351 2032

philip.sprague@cbre.com

Kelly Cubbin

Vice President

+1 248 936 6852

kelly.cubbin@cbre.com

© 2025 CBRE, Inc. All rights reserved. This information has been obtained from sources believed reliable, but has not been verified for accuracy or completeness. You should conduct a careful, independent investigation of the property and verify all information. Any reliance on this information is solely at your own risk. CBRE and the CBRE logo are service marks of CBRE, Inc. All other marks displayed on this document are the property of their respective owners, and the use of such logos does not imply any affiliation with or endorsement of CBRE. Photos herein are the property of their respective owners. Use of these images without the express written consent of the owner is prohibited.