

Airspace I

6001 National Turnpike, Louisville, KY 40214

www.cbre.com/louisville

283,990+/- SF Available



Property Highlights

- 283,990+/- square feet
- 25.53+/- acres
- 7,500+/- square feet of office
- 30 dock doors
- 1 drive-in door
- 4.8 miles to UPS Worldport
- 4.9 miles to Ford LAP
- 179 parking spaces
- Zoned EZ-1

Contact Us

Kevin A. Grove, CCIM, SIOR
Executive Vice President
+1 502 412 7615
kevin.grove@cbre.com

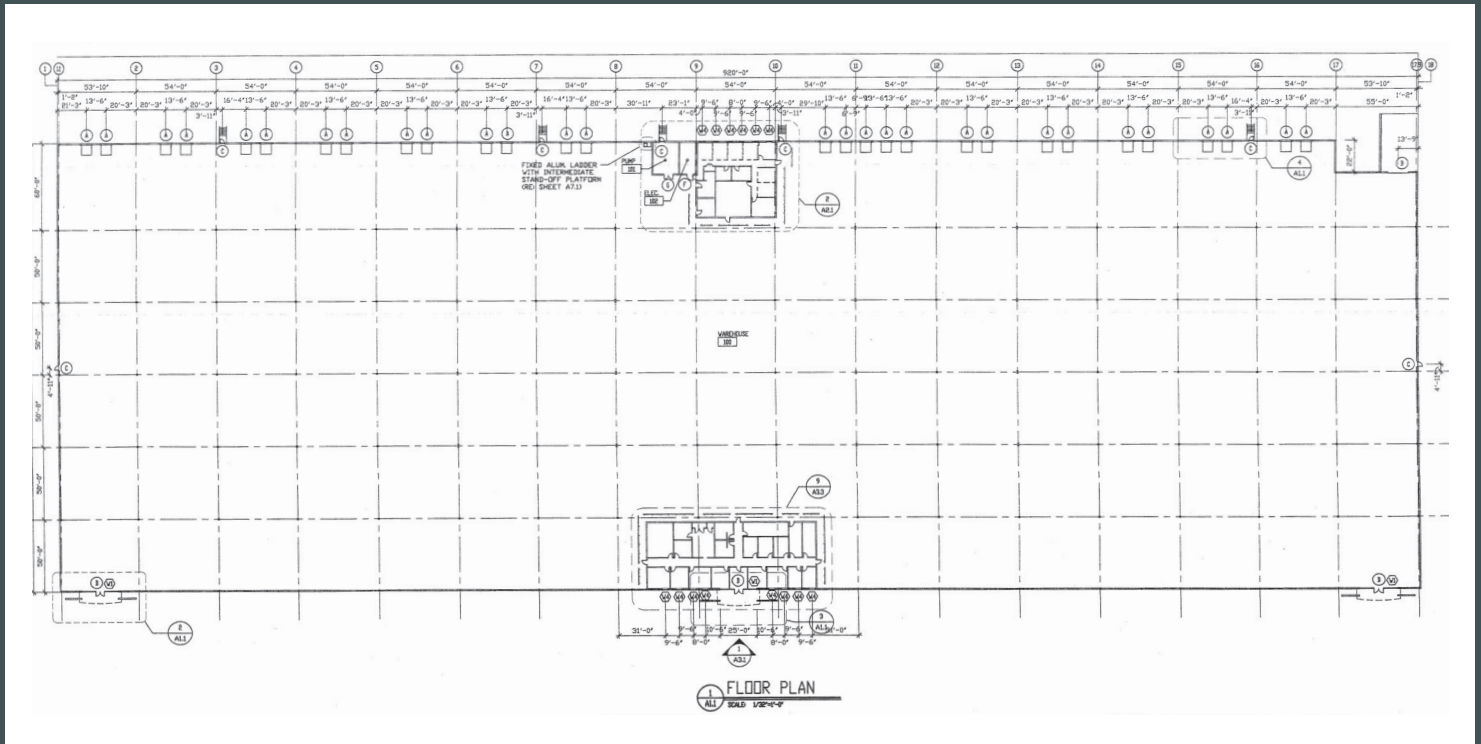
Alex P. Grove
Senior Associate
+1 502 412 7655
alex.grove@cbre.com

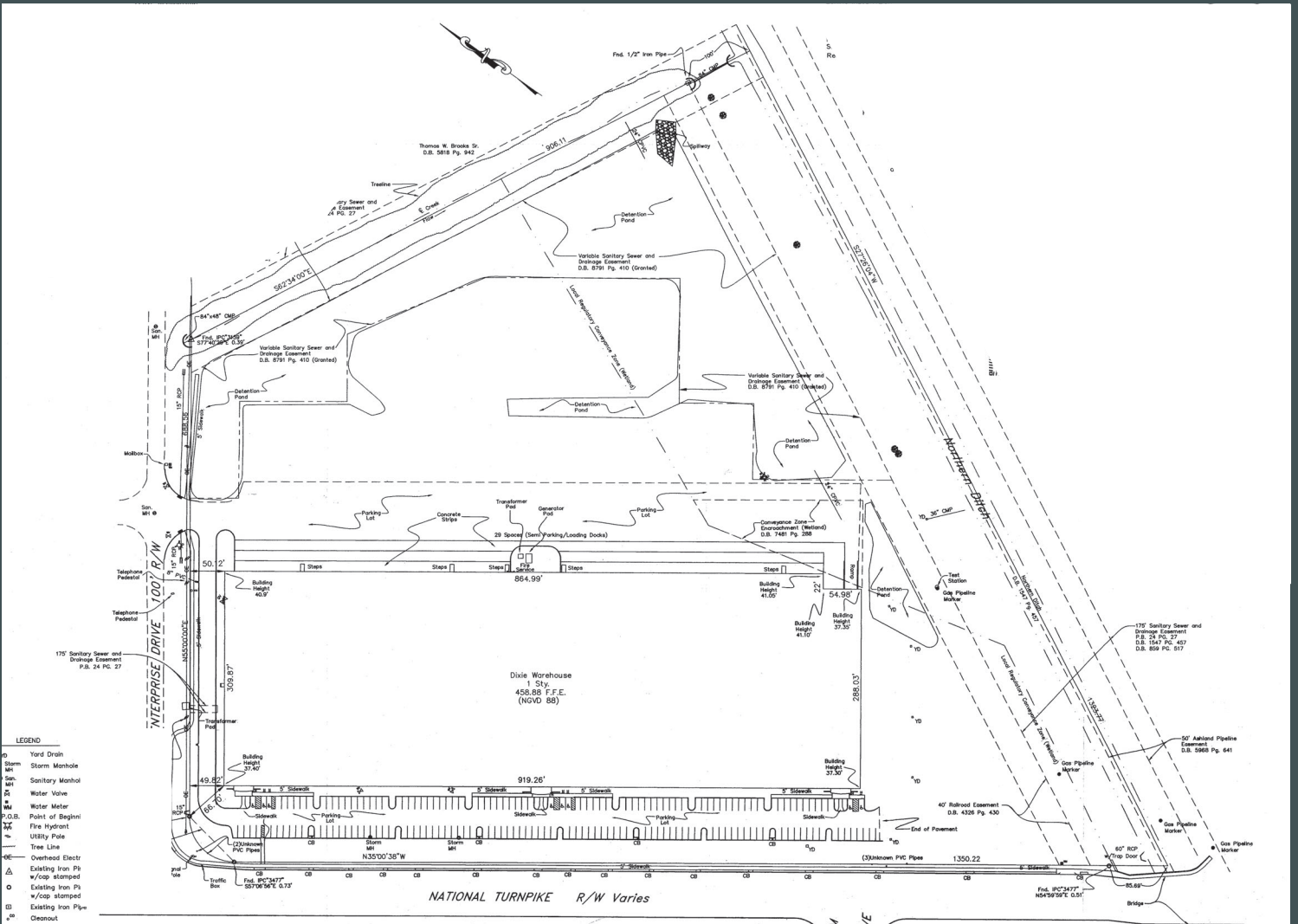
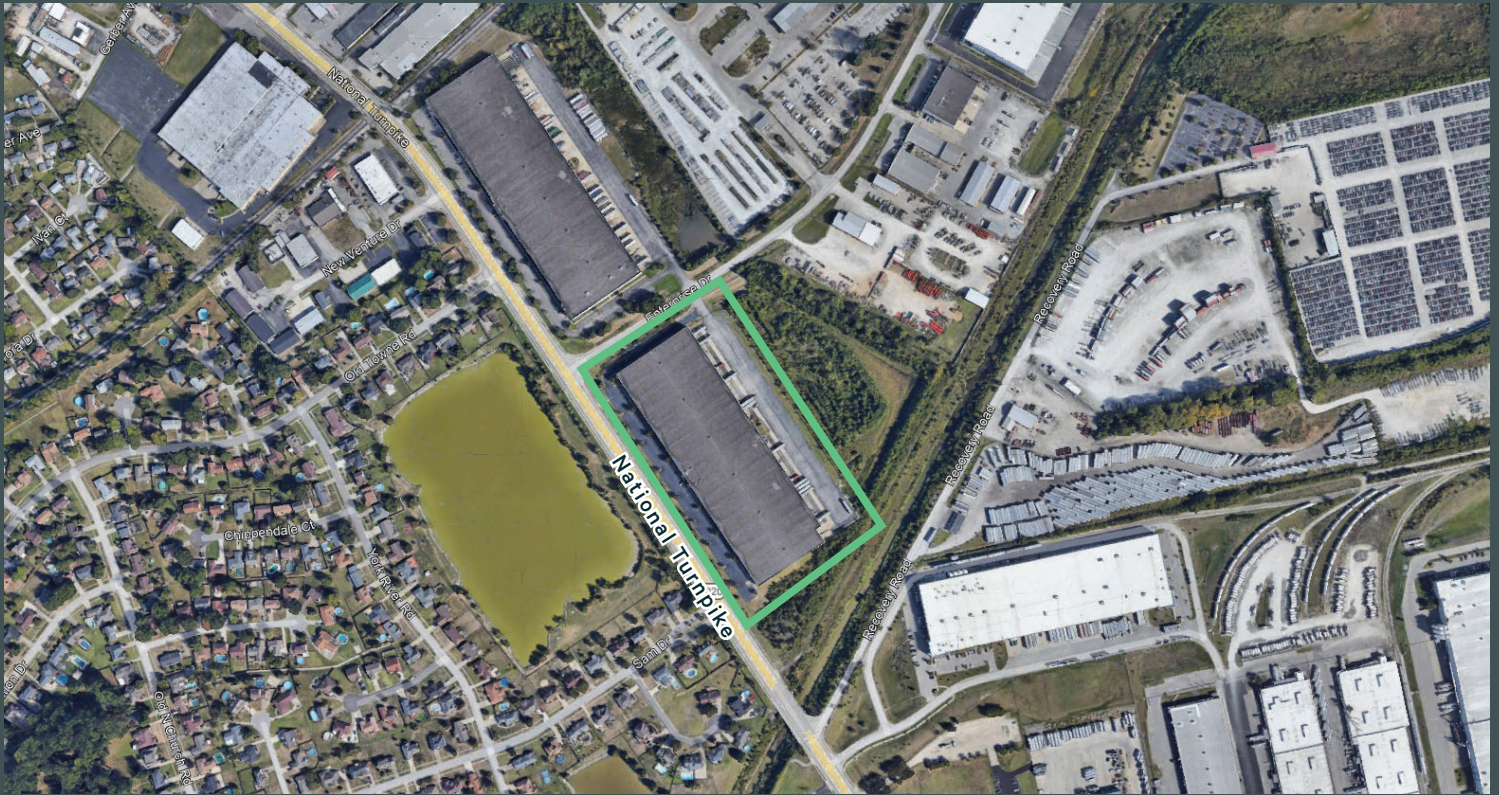
Airspace I

6001 National Turnpike, Louisville, KY

BUILDING SPECS

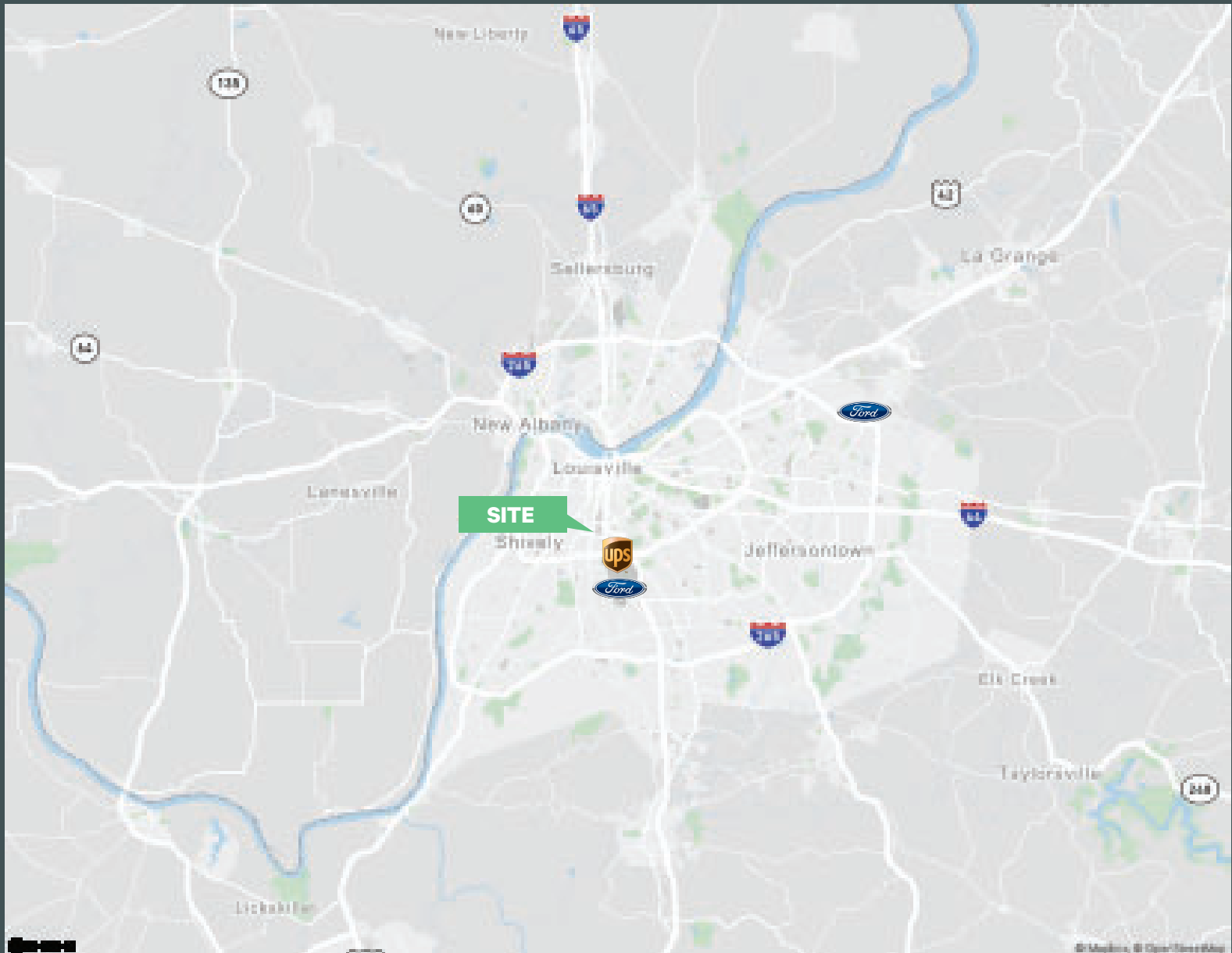
Available Space	283,990+/- SF	Electric	2,000 amp, 277/480V
Office Area	7,500+/- SF	Roof	EPDM
Construction Type	Concrete Tilt-Up	Car Parking	179
Clear Height	30'	Trailer Parking	29
Fire Suppression	ESFR	HVAC System	Gas
Dock Doors	30 (9' X 10'), 25 with Dock Locks	Jurisdiction	Jefferson County
Drive-In Doors	1 (12' X 14')	Zoning	EZ-1
Column Spacing	50' X 50'	Utility Providers	Natural Gas & Electric: Louisville Gas & Electric Company Water: Louisville Water Company Sewer: Metropolitan Sewer District
Lighting	Metal Halide		





Airspace I

6001 National Turnpike, Louisville, KY



Contact Us

Kevin A. Grove, CCIM, SIOR

Executive Vice President

+1 502 412 7615

kevin.grove@cbre.com

Alex P. Grove

Senior Associate

+1 502 412 7655

alex.grove@cbre.com

© 2022 CBRE, Inc. All rights reserved. This information has been obtained from sources believed reliable, but has not been verified for accuracy or completeness. You should conduct a careful, independent investigation of the property and verify all information. Any reliance on this information is solely at your own risk. CBRE and the CBRE logo are service marks of CBRE, Inc. All other marks displayed on this document are the property of their respective owners, and the use of such logos does not imply any affiliation with or endorsement of CBRE. Photos herein are the property of their respective owners. Use of these images without the express written consent of the owner is prohibited.