

1401-1407

THIRD STREET PROMENADE
SANTA MONICA, CA

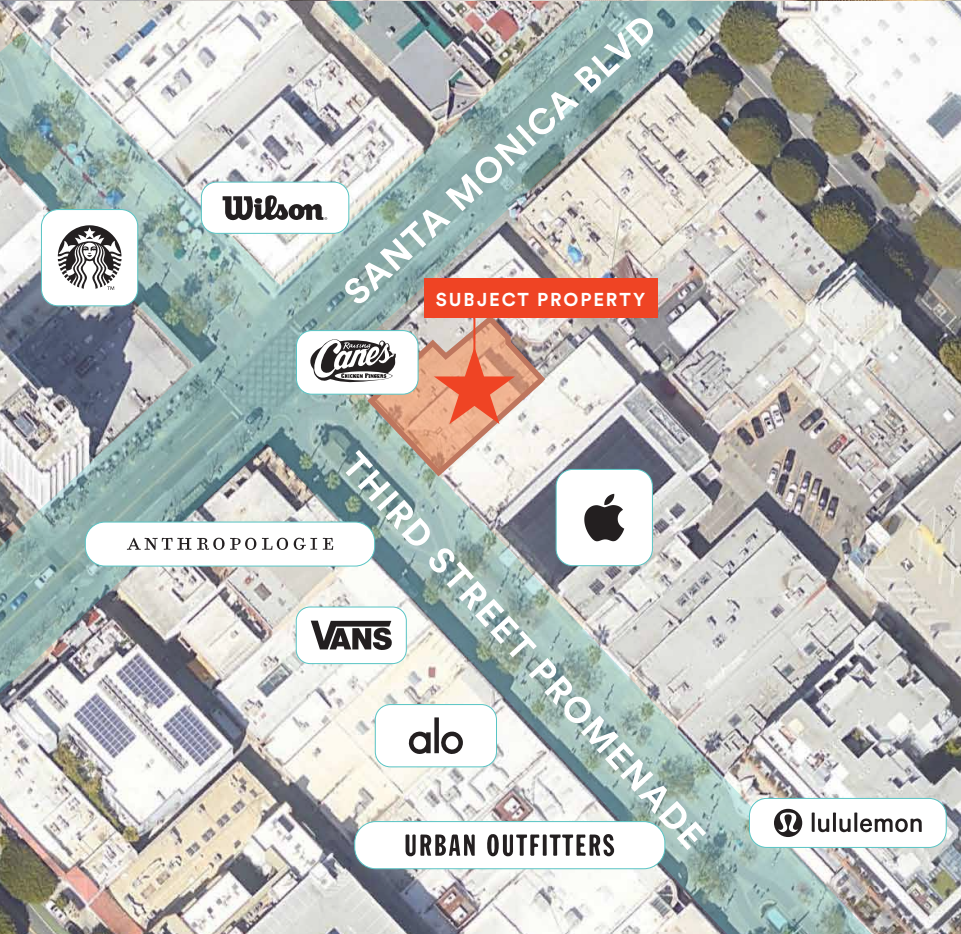


FOR LEASE

PROMINENT RETAIL + F&B SPACES

ADJACENT TO RAISING CANE'S + APPLE FLAGSHIP

SITE OVERVIEW



PROPERTY HIGHLIGHTS

- Located at the intersection of **Santa Monica Boulevard** and **3rd Street** on the most productive block in the Third Street Promenade by volume
- Adjacent to **Apple Flagship** and **Raising Cane's** (coming soon)
- With available spaces ranging from **±562 SF to 2,119 SF**

SITE DESCRIPTION

Address: 1401-1409 Third Street Promenade, Santa Monica, CA

Size: ±562 SF to 2,119 SF

Frontage: Ranging from 13.5' to 40.5' on 3rd Street Promenade

Rent: Upon Request

NNN: \$9.00 PSF per annum

Term: 5-10 years

Possession: Immediate

DOWNTOWN SANTA MONICA PARKING

There are public parking structures throughout Downtown Santa Monica with over 4,000 spaces available.

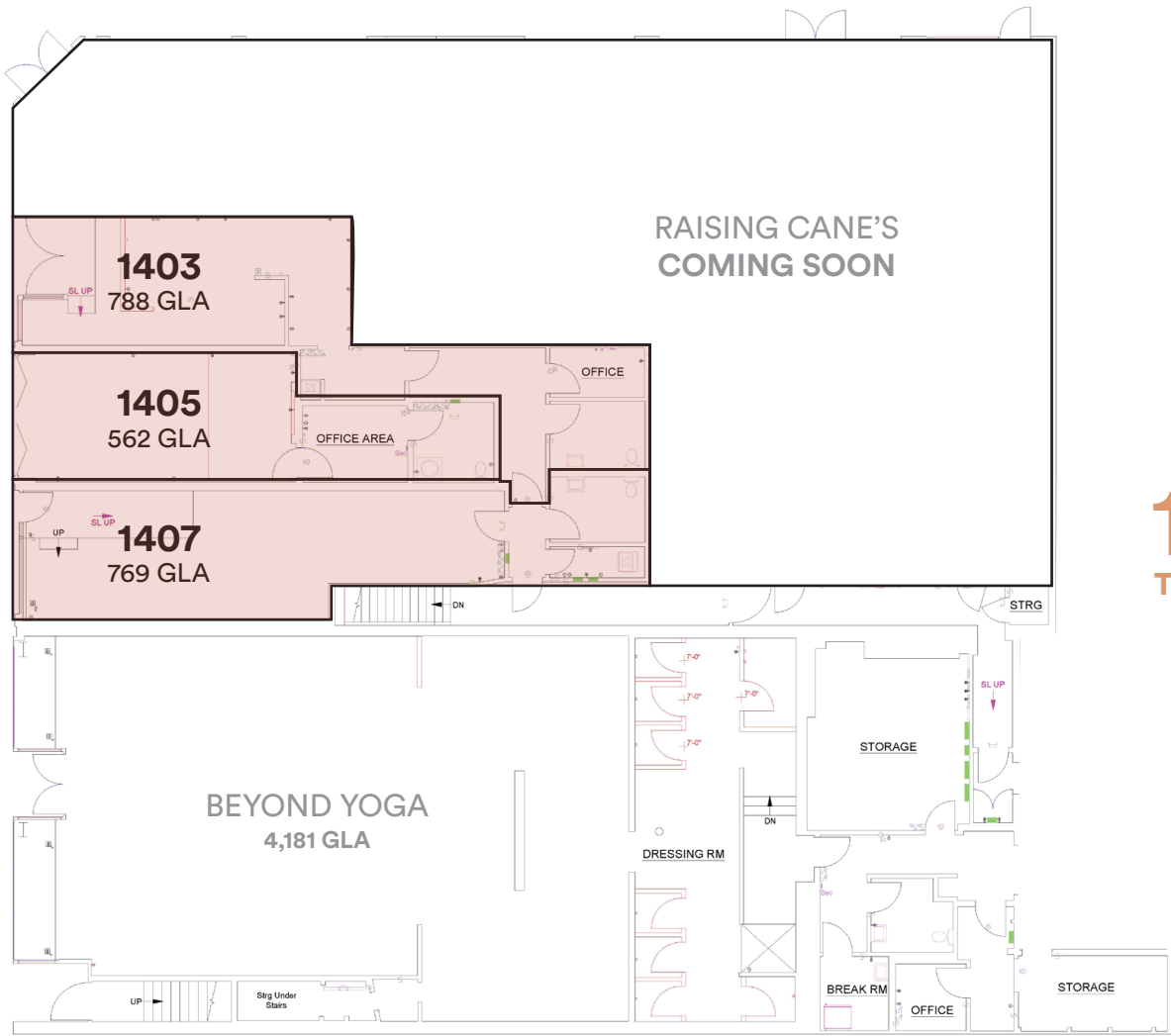
FLOOR PLAN



SANTA MONICA BLVD

THIRD STREET PROMENADE

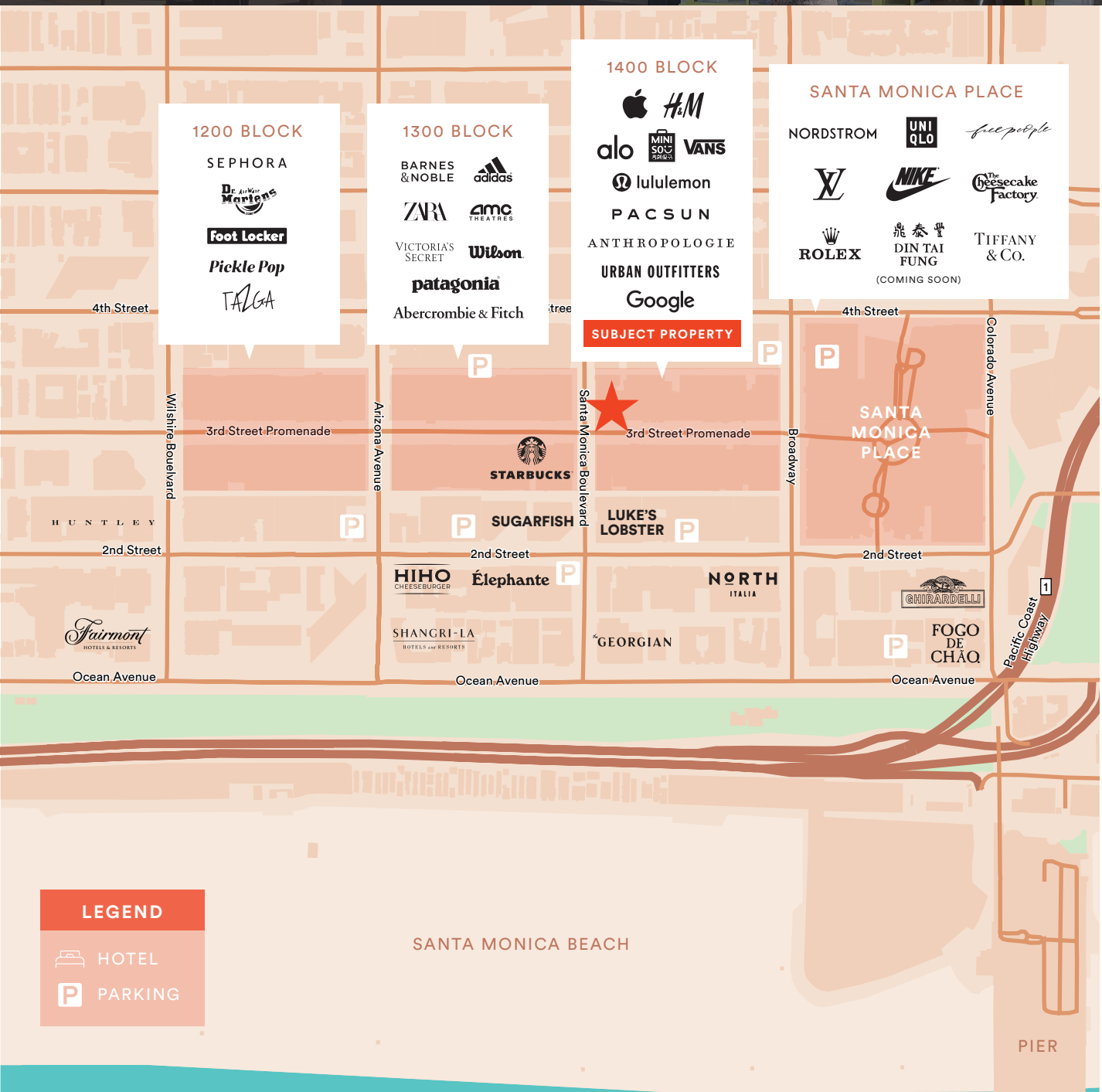
40.5'
13.5' | 13.5' | 13.5'



RAISING CANE'S
COMING SOON

1401-1409
THIRD STREET PROMENADE

LOCATION MAP



THIRD STREET DATA

\$8.56B
RETAIL SPENDING
within 5 miles

USA REGIS 2022
City of Santa Monica

387K
POPULATION
within 5 miles



4.8M
ANNUAL VISITORS
to 3rd Street

VISITOR DEMOGRAPHICS

- 51% First Time Visitors
- 49% Repeat Visitors
- 63% American Visitors
- 33% International Visitors

STATISTICS (within 3 miles)

- \$306 Avg. Hotel Room Rate
- 75.5% Avg. Hotel Occupancy
- \$209,964 Avg. H.H. Income
- 41.5 Median Age
- 68% College Educated

MARKET OVERVIEW

Downtown Santa Monica is the epicenter of world-class shopping, dining and entertainment.

The Promenade hosts the Santa Monica Farmer's Market twice weekly, featuring premium organic ingredients and frequented by over one million customers annually, including L.A.'s top chefs and restaurants.

The City of Santa Monica, in partnership with local stakeholders, is re-imagining the Promenade to cater to the next evolution of retailers and restaurants.

The immediate trade area has over 15 million visitors spending over \$2 Billion a year in hospitality.

LARGEST EMPLOYERS IN THE CITY OF SANTA MONICA

amazon
media group

Snap Inc.

hulu

LIONSGATE

ORACLE

Red Bull
ENERGY DRINK

GoodRx

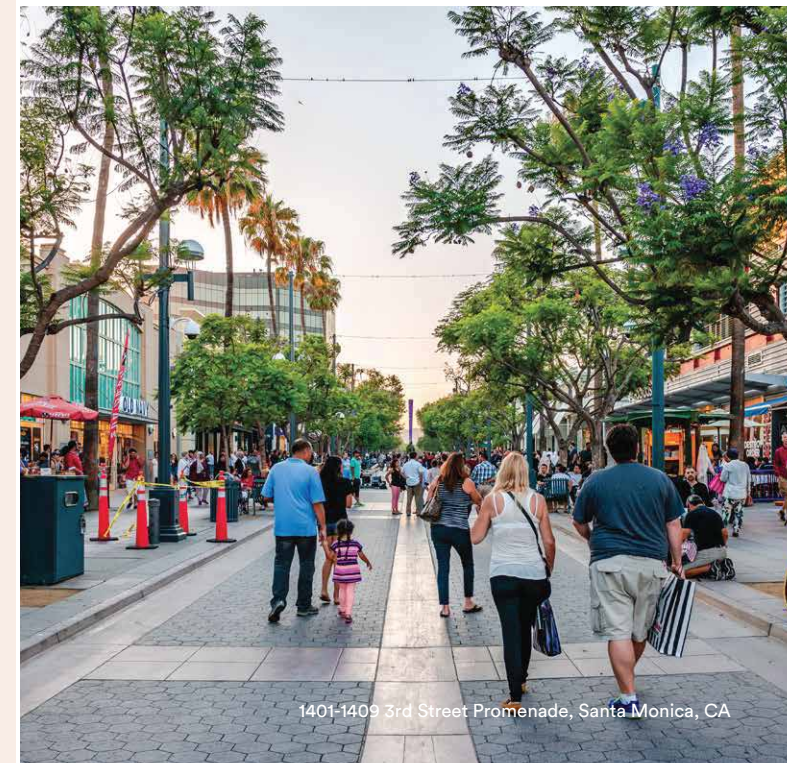
UNIVERSAL
UNIVERSAL MUSIC GROUP

UCLA Health

ACTIVISION
BLIZZARD

sundance
institute

ZipRecruiter



1401-1409

THIRD STREET PROMENADE SANTA MONICA, CA



For leasing information:

Matthew Fainchtein
Managing Director
matthew.fainchtein@jll.com
+1 (310) 430 2548
CA Lic. # 01503546

Devin Klein
Vice President
devin.klein@jll.com
+1 (310) 595 3641
CA Lic. # 01471525

Ryan Hawley
Vice President
ryan.hawley@jll.com
+1 (310) 407-2160
CA Lic. # 02146998

Natalie V. Wagner, CCIM
Executive Vice President
natalie@lockehouse.com
+1 (805) 232 4550
CA Lic. # 01868161

Dennis Borowsky
Senior Vice President
dborowsky@lockehouse.com
+1 (949) 922 6506
CA Lic. # 00882780



Although information has been obtained from sources deemed reliable, neither Owner nor JLL makes any guarantees, warranties or representations, express or implied, as to the completeness or accuracy as to the information contained herein. Any projections, opinions, assumptions or estimates used are for example only. There may be differences between projected and actual results, and those differences may be material. The Property may be withdrawn without notice. Neither Owner nor JLL accepts any liability for any loss or damage suffered by any party resulting from reliance on this information. If the recipient of this information has signed a confidentiality agreement regarding this matter, this information is subject to the terms of that agreement. ©2022 Jones Lang LaSalle IP, Inc. All rights reserved.