



545 McBride Avenue, Neepawa, Manitoba

Commercial Opportunity in the Heart of Neepawa, MB

For Sale/Lease 

Property Details

+/- 5,620 sq. ft.

TOTAL BUILDING SIZE

+/- 14,503 sq. ft.

TOTAL LAND SIZE

~~\$650,000~~ **\$595,000**

SALE PRICE

\$7,000/month

ASKING RENT

\$7,571.61

2024 PROPERTY TAXES

CH - Highway Commercial

ZONING

Features

- Property offers a blend of functionality and potential, ideal for investors or businesses seeking a presence in this vibrant community
- +/- 1,020 sq. ft. front office/showroom area
- +/- 4,600 sq. ft. main production shop/storage/loading area
- Property is approximately 90' wide by 160'
- Selling on as-is basis - buyer to complete own due diligence



Highlights



Prime Location

IN DOWNTOWN
NEEPAWA



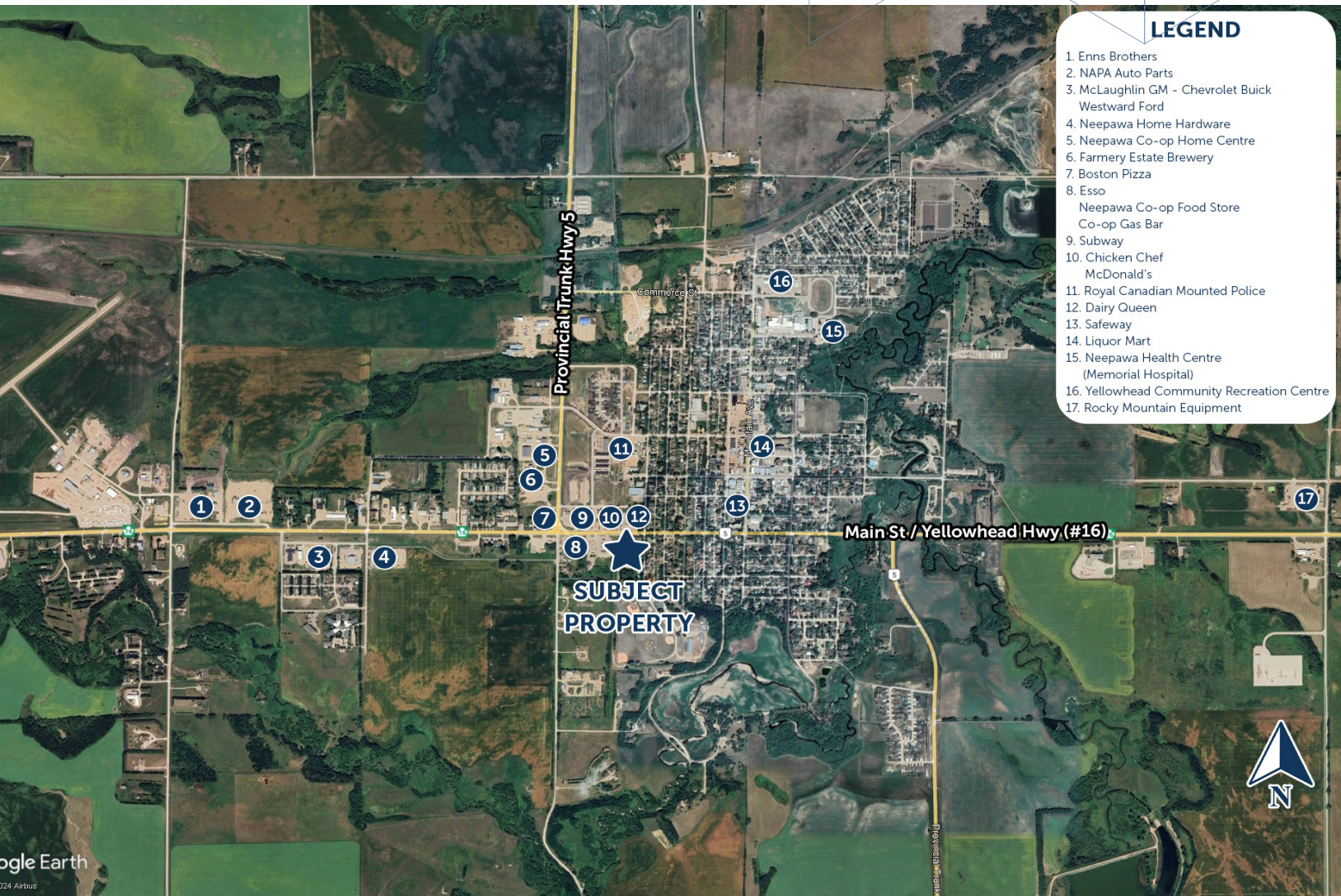
Dominant

BUILDING SIGNAGE
OPPORTUNITIES



Excellent On-Site

PARKING



Connect with us today!

[iciproperties.com](https://www.iciproperties.com)

Jared Kushner*

VICE PRESIDENT

jkushner@iciproperties.com

204-294-1087

DISCLAIMER Information herein has been obtained from sources deemed reliable; however, neither the Vendor/Landlord nor ICI Properties guarantees, warrants, or represents, expressly or impliedly, its completeness or accuracy. Projections, opinions, assumptions, or estimates, if any, are provided as examples only and may differ materially from actual results. Purchasers and tenants are responsible for conducting their own due diligence. The property may be withdrawn without notice. Neither the Vendor/Landlord nor ICI Properties assumes liability for any loss or damage arising from reliance on this information. If the recipient has executed a confidentiality agreement related to this matter, such information is subject to its terms. ©2025 ICI Properties. All rights reserved.

**Services provided by Jared Kushner Personal Real Estate Corporation*

For Sale/Lease 

545 McBride Avenue, Neepawa, Manitoba
[iciproperties.com](https://www.iciproperties.com)