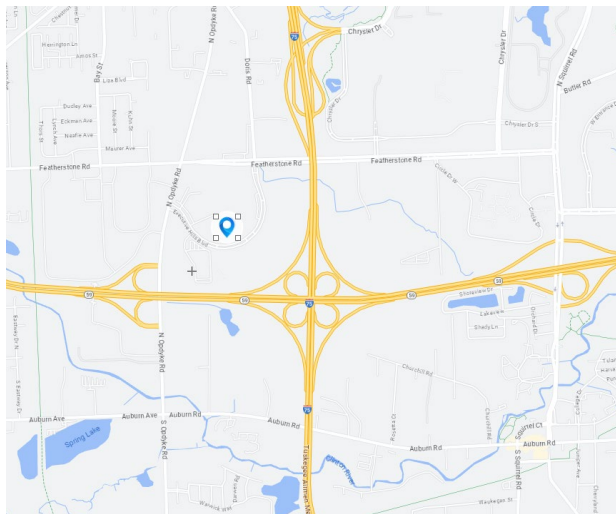




FOR SALE

2193 Executive Hills Blvd

Auburn Hills, MI



Property Highlights

- 17,059 SF Available For Sale
- Clear Span Warehouse
- Large Recently Re-Paved Lot
- (1) Exterior Truckwell
- Heavy Power
- Fully Air-Conditioned

For information, please contact:

Geoff Hill

Executive Managing Director

t 248-350-1492

geoff.hill@nmrk.com

Chris Hill

Director

t 248-350-1192

chris.hill@nmrk.com

Teddy O'Keefe

Associate

t 248-447-2715

teddy.okeefe@nmrk.com

27725 Stansbury Blvd, Suite 300
Farmington Hills, MI 48334



nmrk.com

NEWMARK

The information contained herein has been obtained from sources deemed reliable but has not been verified and no guarantee, warranty or representation, either express or implied, is made with respect to such information. Terms of sale or lease and availability are subject to change or withdrawal without notice.

Sale

2193 Executive Hills Blvd Auburn Hills, MI 48326-2943



Pricing Information:

Lease Rate Range:	N/A
Lease Type:	
Sale Price:	\$2,600,000
Price per sf:	\$152.41/sf
Real Estate Taxes psf:	\$2.16
Building Insurance psf:	\$0.00
CAM psf:	N/A

Property Details:

Total Building Area:	17,059 sf	Parcel ID:	14-26-126-014
Min/Max Available:	17,059 sf	Parking Description:	
Office Area:	5,991 sf	Rail Served:	No
Property Type:	R&D/Flex	Cranes:	No
Tenancy:	Single-tenant	Heat:	GFA/100% HVAC
Year Built:	01/01/1998	Clear Height Min/Max:	14.0'
Year Renovated:	01/01/2017	Grade/Dock Doors:	1 / 1
Zoning:	TR	Sprinkler:	Yes
Site/Parcel Area:	3.06 acres	Power:	800 amps, 480 volt

Comments:

High-image R&D building on 3+ acres with expansion capabilities, parking lot re-paved in 2022, building addition in 2017, fully A/C in office and warehouse, heavy power, airlines, clear span building.

Geoff Hill

248.350.1492

geoff.hill@nrmk.com

Chris Hill

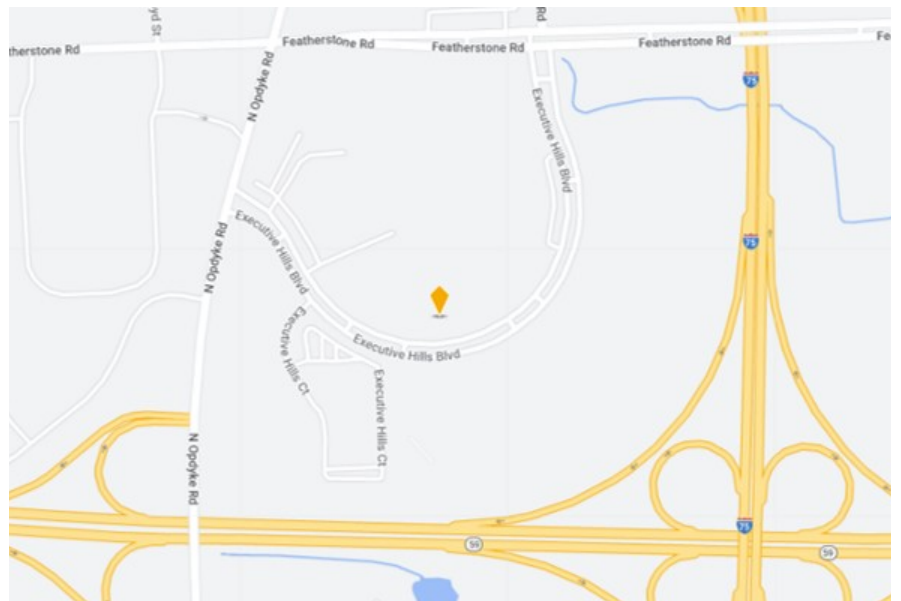
248.350.1192

chris.hill@nrmk.com

Teddy O'Keefe

248.447.2715

teddy.okeefe@nrmk.com



Photos



CONTACT

Geoff Hill

Executive Managing Director
t 248-350-1492
geoff.hill@nmrk.com

Chris Hill

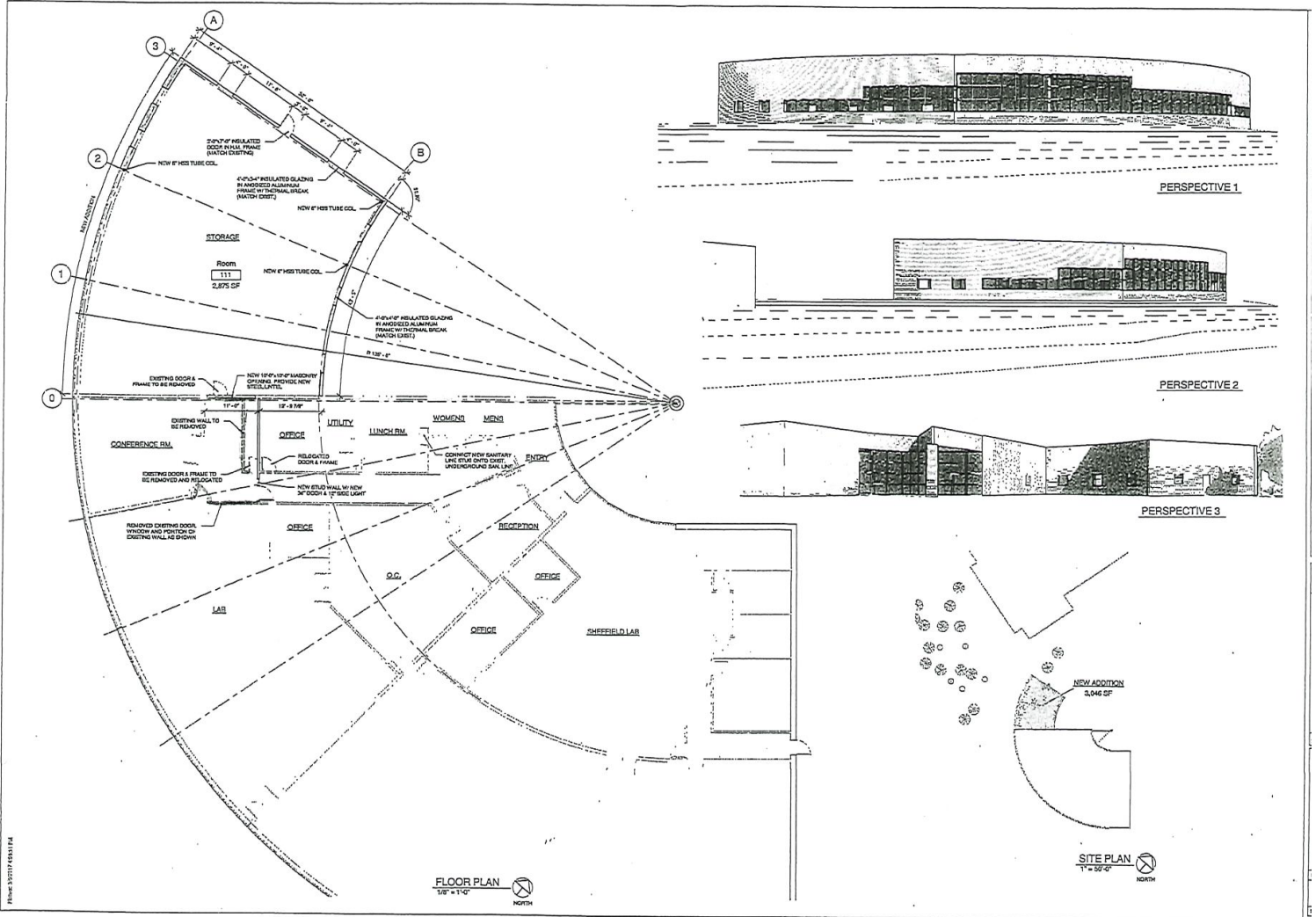
Director
t 248-350-1192
chris.hill@nmrk.com

Teddy O'Keefe

Associate
t 248-447-2715
teddy.okeefe@nmrk.com

NEWMARK

Floor Plan



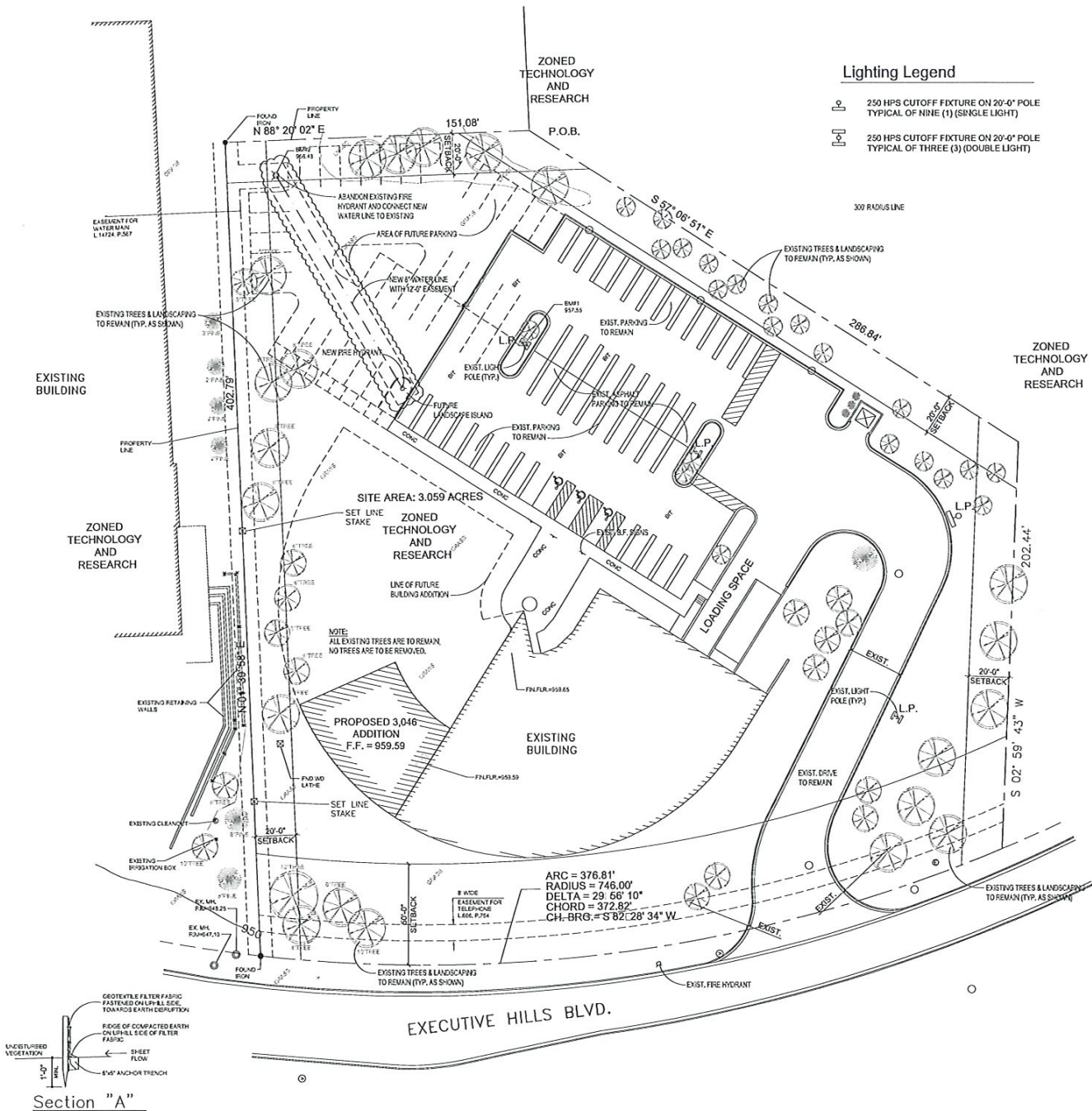
CONTACT

Geoff Hill
Executive Managing Director
 t 248-350-1492
 geoff.hill@nmrk.com

Chris Hill
Director
 t 248-350-1192
 chris.hill@nmrk.com

Teddy O'Keefe
Associate
 t 248-447-2715
 teddy.okeefe@nmrk.com

Site Plan



CONTACT

Geoff Hill
 Executive Managing Director
 t 248-350-1492
 geoff.hill@nmrk.com

Chris Hill
 Director
 t 248-350-1192
 chris.hill@nmrk.com

Teddy O'Keefe
 Associate
 t 248-447-2715
 teddy.okeefe@nmrk.com