

FOR LEASE



OASIS OFFICE CENTRE

940 Centre Circle, Altamonte Springs, FL 32714

AVAILABLE SPACE

Suite 1012 - 1,658± RSF (first floor)

Open floorplan, nicely finished with high-end wood flooring, exposed ceiling with trac lighting, breakroom, one restroom.

Suite 2020 - 3,171± RSF (second floor)

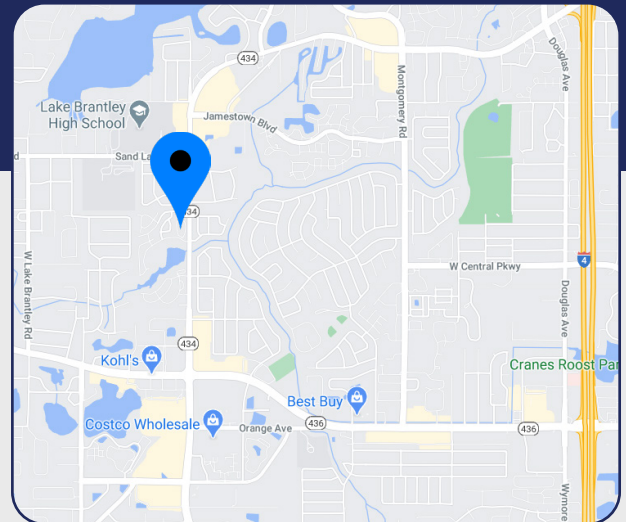
Nicely finished, open floorplan with two private window offices, kitchen, two restrooms.

Suite 3012 - 2,803± RSF (third floor)

Reception area, six window offices, conference room, break area with sink/cabinetry, one restroom, upgraded finishes, freshly painted, luxury vinyl tile, good natural lighting.

LEASE RATE: \$17.00/RSF plus electric/janitorial

- > 48,000 RSF professional office building
- > Beautiful Class "A" Mediterranean Old World Style architecture
- > Exterior recently painted and newly refreshed lobby
- > Monument signage available, highly visible to over 45,000 cars per day
- > Each suite provides outside accessibility, kitchens, restrooms, and individually controlled HVAC and electric
- > Easy access to SR 434, SR 436, Interstate-4, and Maitland Boulevard
- > Excellent parking at five spaces per 1,000 RSF
- > Zoned PUD-MO, Altamonte Springs



Christi Davis, CCIM

D 407.206.5732

C 407.694.5179

christi@bywater.com



1209 Edgewater Drive

Suite 100

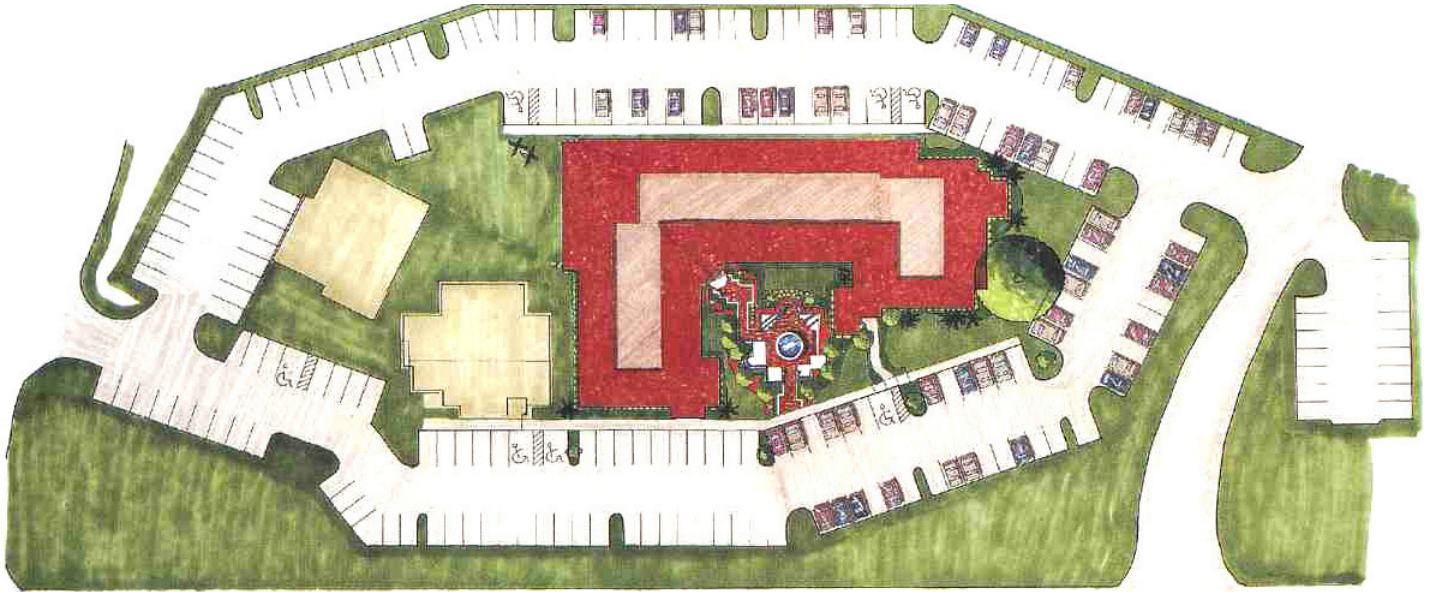
Orlando, FL 32804

407.206.7300 Main

www.bywater.com

OASIS OFFICE CENTRE

940 Centre Circle, Altamonte Springs, FL 32714



- > A unique setting, ideal for professionals
- > Monument signage available
- > Highly visible to over 45,000 cars per day
- > Exterior covered walkways overlook lushly landscaped courtyard and fountain
- > Energy efficient design with core factor of 10%
- > State-of-the-art high-speed internet access connectivity
- > Each suite provides outside accessibility with individually controlled HVAC and electric
- > No after-hours A/C charges
- > 24-hour access
- > On-site property management
- > Excellent parking at 5 spaces per 1,000 RSF
- > Easily accessible to SR 434, SR 436, Interstate-4, and Maitland Boulevard
- > Close to upscale residential communities, restaurants, shopping, and services

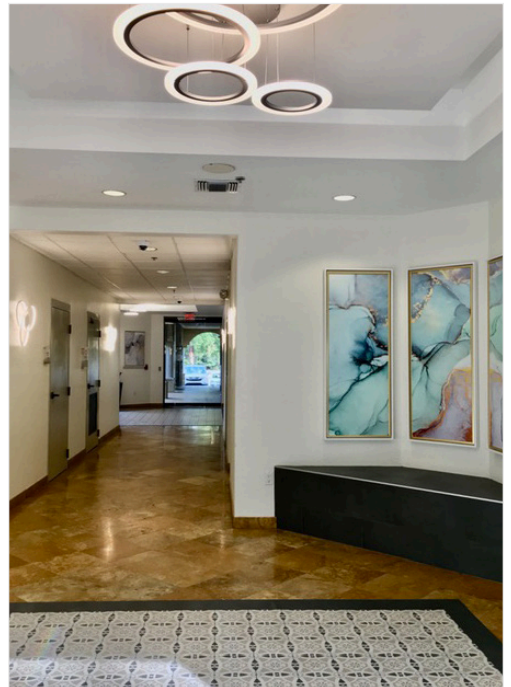
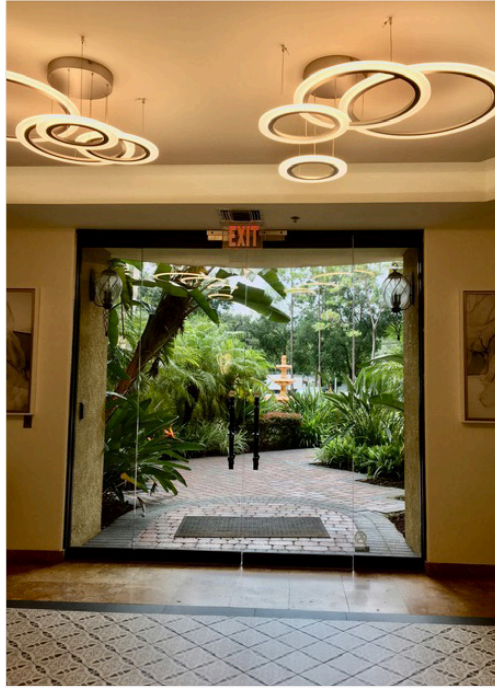


1209 Edgewater Drive, Suite 100 | Orlando, FL 32804 | 407.206.7300 | www.bywater.com

The information contained herein was obtained from sources deemed reliable and is assumed to be correct. It is not guaranteed by The Bywater Company.

OASIS OFFICE CENTRE

940 Centre Circle, Altamonte Springs, FL 32714



1209 Edgewater Drive, Suite 100 | Orlando, FL 32804 | 407.206.7300 | www.bywater.com

The information contained herein was obtained from sources deemed reliable and is assumed to be correct. It is not guaranteed by The Bywater Company.