



# OFFICE/RETAIL SPACE FOR LEASE

## PALATINE CENTRE 3-47 E NORTHWEST HWY, PALATINE, IL



### BUILDING FEATURES:

- 815 SF Available Immediately For Lease
- Located on Northwest Hwy with Excellent Exposure
- Easy Access to Route 53/I-90 via Northwest Hwy
- Center is Anchored by Quest Academy, an Elementary School Serving Approximately 300 Students

- Motivated Ownership Group
- Great Layouts for Immediate Occupancy
- Dedicated entry for office suites
- **Rental Rate on Office Suites \$15.00 PSF MG**
- **\*\*\*All Office Suites Include Utilities & Janitorial**

### AVAILABLE RETAIL SPACE:

100 % Leased

### AVAILABLE OFFICE SPACE:

Suite	Size (SF)	Monthly Rent
15-B	815 RSF	\$15.00 PSF Gross (\$1,018.75 per month) Former Med Spa Space with Sinks

- **\*\*\*All Office Suites Include Utilities & Janitorial \*\*\***

### FOR MORE INFORMATION:

RANDY OLCZYK  
Direct: 847.246.9611  
randy@chicagolandcommercial.com

TOM CALLAHAN  
Direct: 847.246.9636  
tom@chicagolandcommercial.com



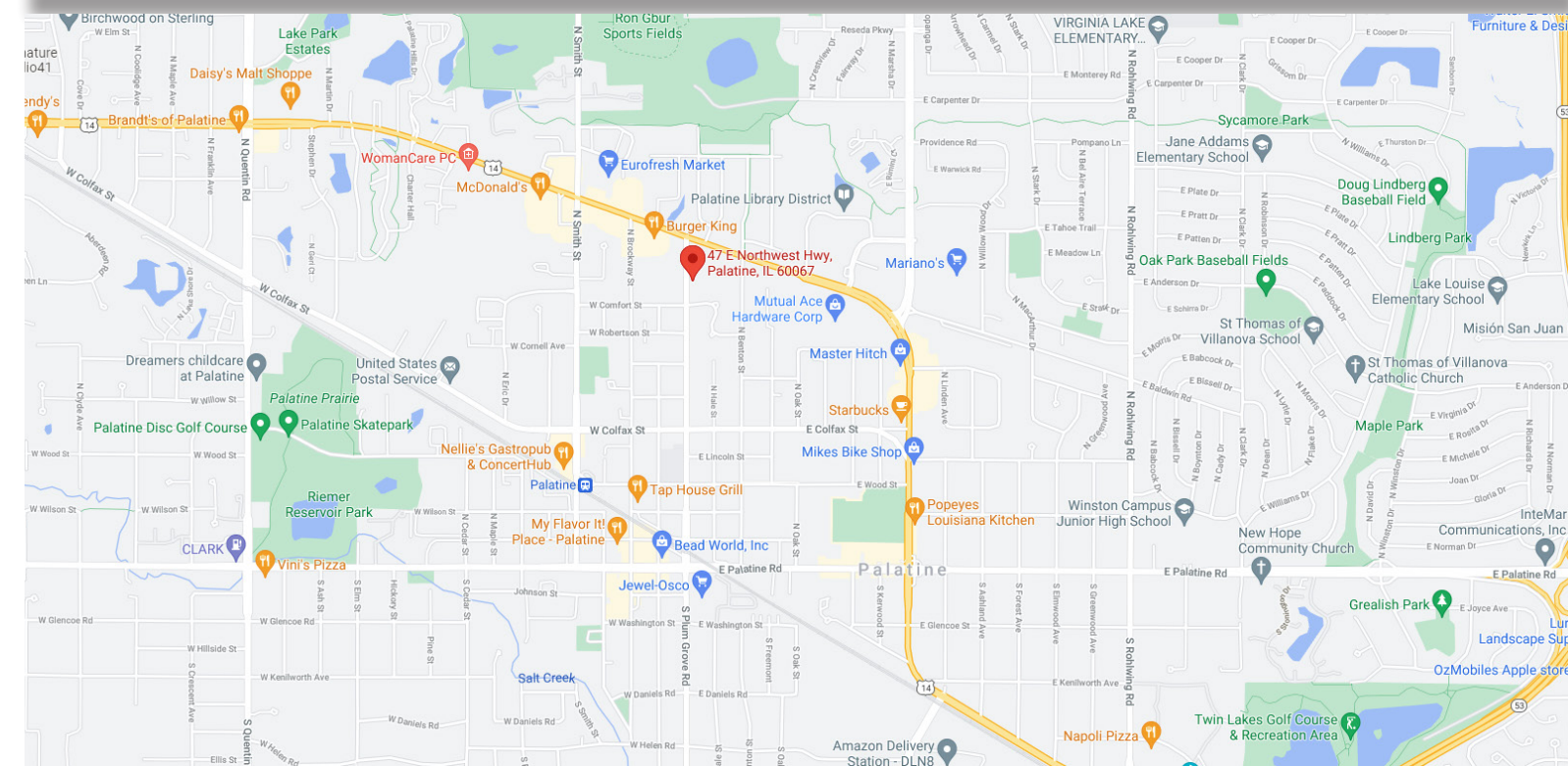
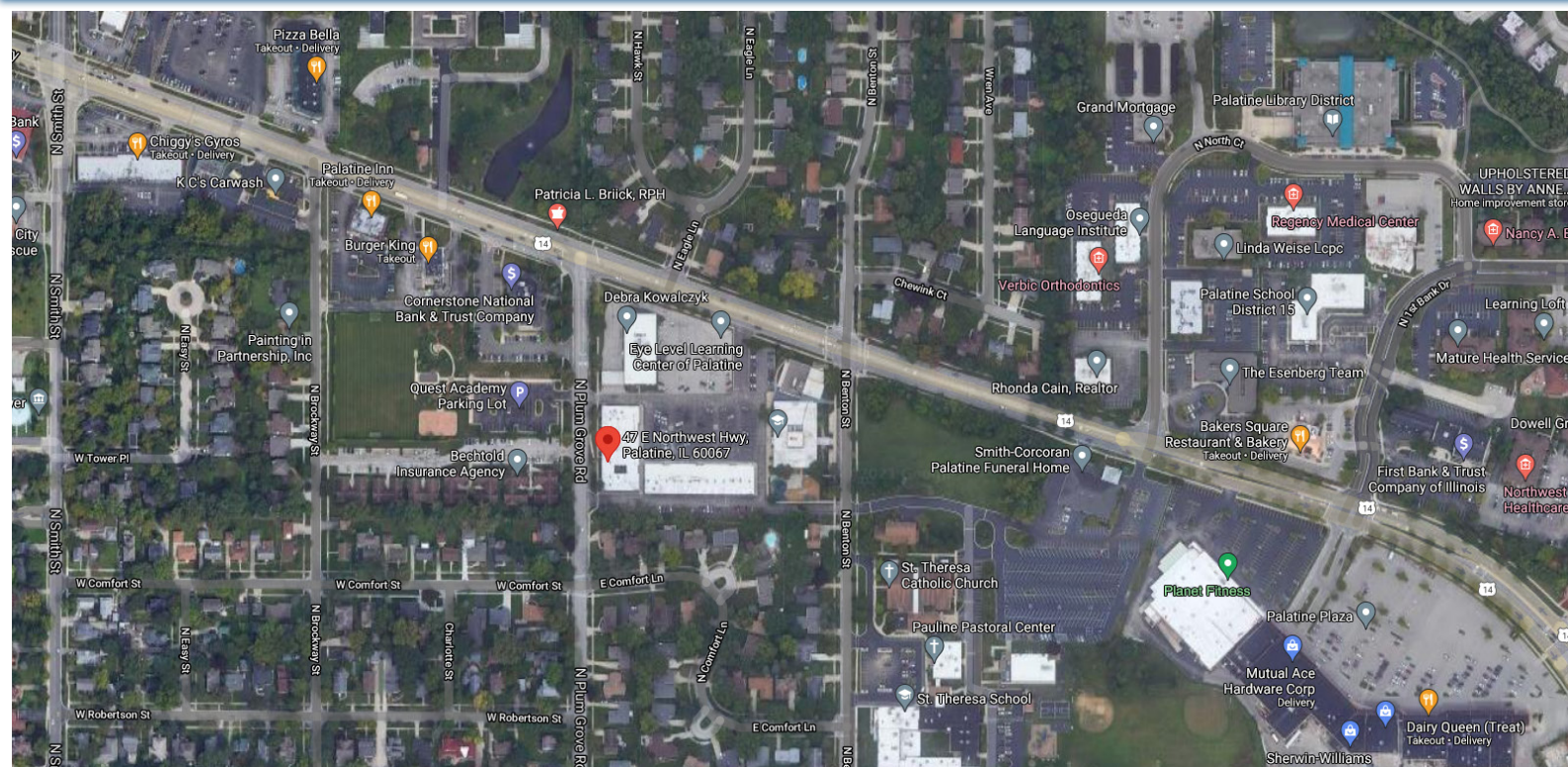
4811 Emerson Ave-Suite 112., Palatine, IL



# OFFICE/RETAIL SPACE FOR LEASE

## PALATINE CENTRE 3-47 E NORTHWEST HWY, PALATINE

### AREA MAPS



### FOR MORE INFORMATION:

RANDY OLCZYK  
Direct: 847.246.9611  
randy@chicagolandcommercial.com

TOM CALLAHAN  
Direct: 847.246.9636  
tom@chicagolandcommercial.com



4811 Emerson Ave-Suite 112., Palatine, IL



# OFFICE/RETAIL SPACE FOR LEASE

## PALATINE CENTRE 3-47 E NORTHWEST HWY, PALATINE

### OFFICE LOBBY AREA PHOTOS



### FOR MORE INFORMATION:

RANDY OLCZYK  
Direct: 847.246.9611  
randy@chicagolandcommercial.com

TOM CALLAHAN  
Direct: 847.246.9636  
tom@chicagolandcommercial.com



4811 Emerson Ave-Suite 112., Palatine, IL

LEASING | SALES | TENANT ADVISORY | MANAGEMENT

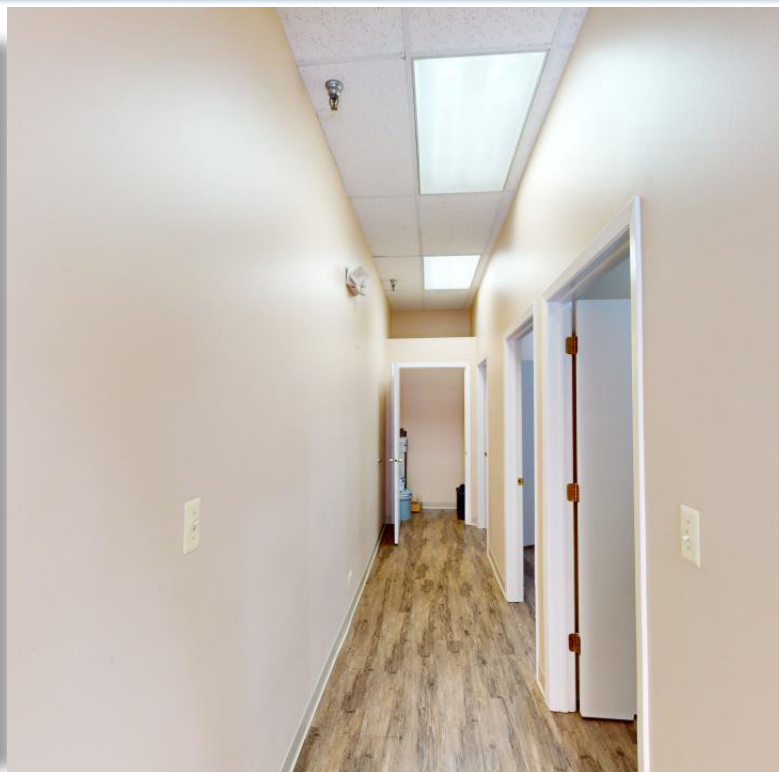
[www.chicagolandcommercial.com](http://www.chicagolandcommercial.com)



# OFFICE/RETAIL SPACE FOR LEASE

## PALATINE CENTRE 3-47 E NORTHWEST HWY, PALATINE

SUITE 15-B PHOTOS



### FOR MORE INFORMATION:

RANDY OLCZYK  
Direct: 847.246.9611  
randy@chicagolandcommercial.com

TOM CALLAHAN  
Direct: 847.246.9636  
tom@chicagolandcommercial.com



4811 Emerson Ave-Suite 112., Palatine, IL

LEASING | SALES | TENANT ADVISORY | MANAGEMENT

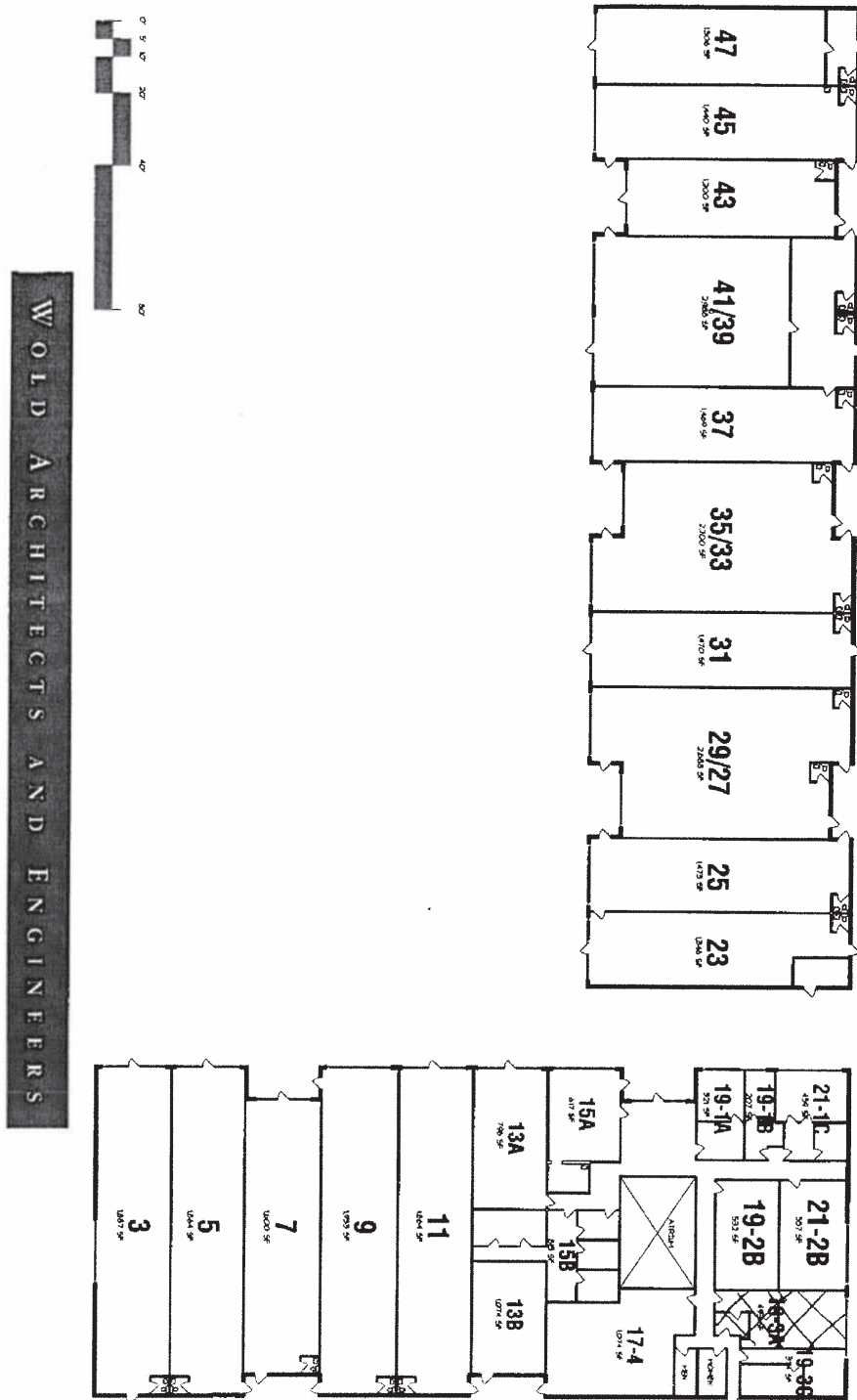
[www.chicagolandcommercial.com](http://www.chicagolandcommercial.com)



# OFFICE/RETAIL SPACE FOR LEASE

## PALATINE CENTRE 3-47 E NORTHWEST HWY, PALATINE

### SITE PLAN



### FOR MORE INFORMATION:

RANDY OLCZYK  
 Direct: 847.246.9611  
 randy@chicagolandcommercial.com

TOM CALLAHAN  
 Direct: 847.246.9636  
 tom@chicagolandcommercial.com



**Chicagoland**  
**Commercial**  
 REAL ESTATE

4811 Emerson Ave-Suite 112., Palatine, IL