

FOR LEASE OFFICE/WAREHOUSE SPACE

±12,881 - ±25,747 SQUARE FEET AVAILABLE

3132



3132-3200 DWIGHT ROAD

ELK GROVE, CA

NEWMARK

**GRACEADA
PARTNERS**

MIKE SMITH

Director

916-569-2352

mike.smith@nmrk.com

CA RE License #01504428

COLE CUMMINGS

Associate Director

916-569-2366

cole.cummings@nmrk.com

CA RE License #02106833

MATT ALEMANIA

Associate Director

916-569-2363

matthew.alemania@nmrk.com

CA RE License #01958591

SPACE HIGHLIGHTS

3200 DWIGHT - SUITE 350

- » ±25,747 square feet available
- » ±24,873 square feet of warehouse space
- » ±874 square feet of office space
- » Seven (7) Dock High Doors
- » 24' Clear Height

3132 DWIGHT - SUITE 500

- » ±12,881 square feet available
- » ±11,969 square feet of warehouse space
- » ±912 square feet of office space
- » Two (2) Dock High Doors
- » One (1) Grade Level Door
- » 24' Clear Height

PROJECT HIGHLIGHTS

- » Multiple access points
- » 5 minutes from Interstate 5
- » ESFR sprinklers
- » High demographic neighborhood, abundant local services, robust labor pool
- » Zoned LI - Light Industrial (City of Elk Grove)

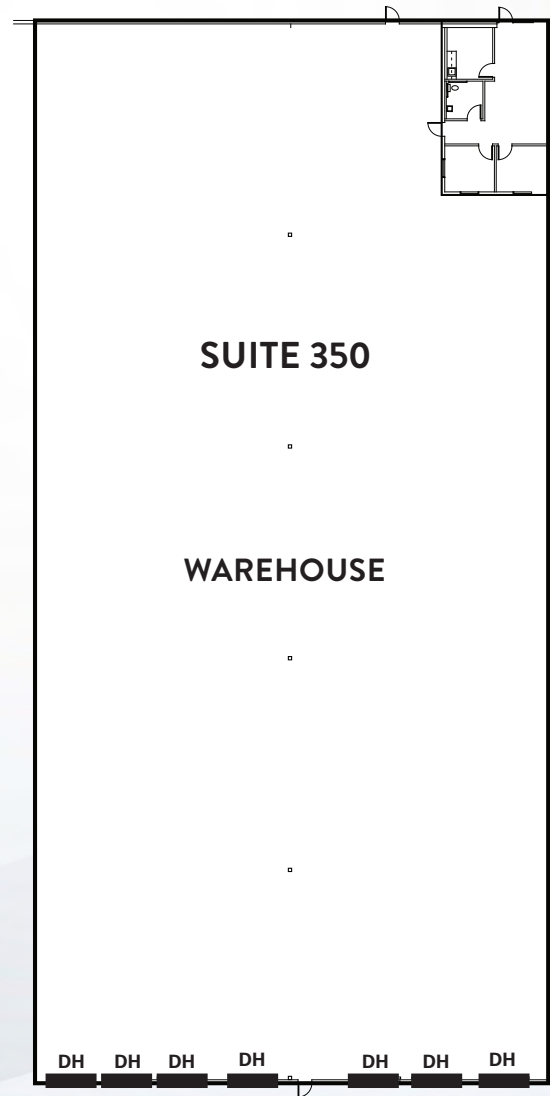


MIKE SMITH 916.569.2352
COLE CUMMINGS 916.569.2366
MATT ALEMANIA 916.569.2363



MIKE SMITH 916.569.2352
COLE CUMMINGS 916.569.2366
MATT ALEMANIA 916.569.2363

PARKING AND DRIVE AISLE

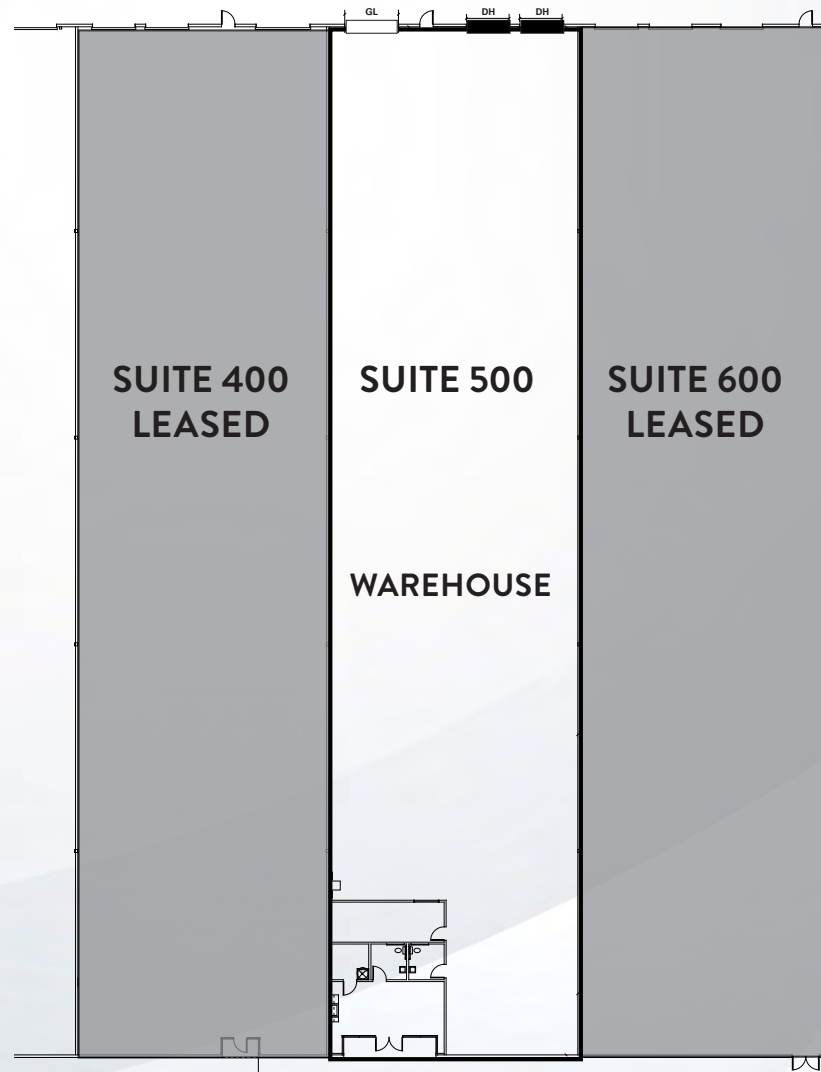


TRUCK COURT

FLOOR PLAN - 3200 DWIGHT

MIKE SMITH 916.569.2352
COLE CUMMINGS 916.569.2366
MATT ALEMANIA 916.569.2363

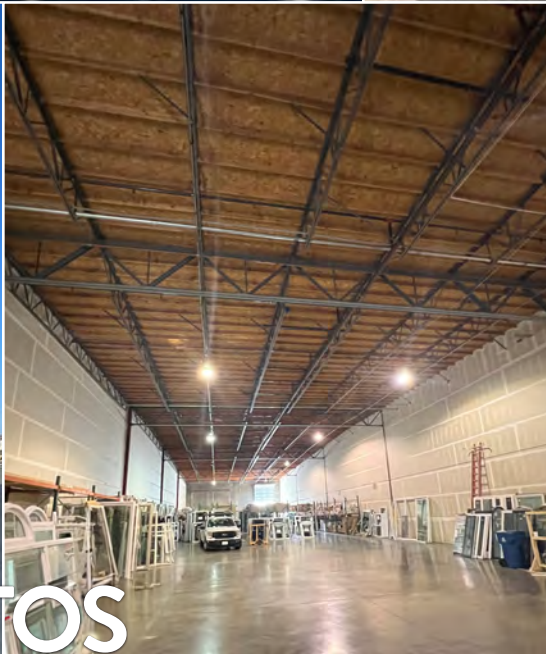
TRUCK COURT



PARKING AND DRIVE AISLE

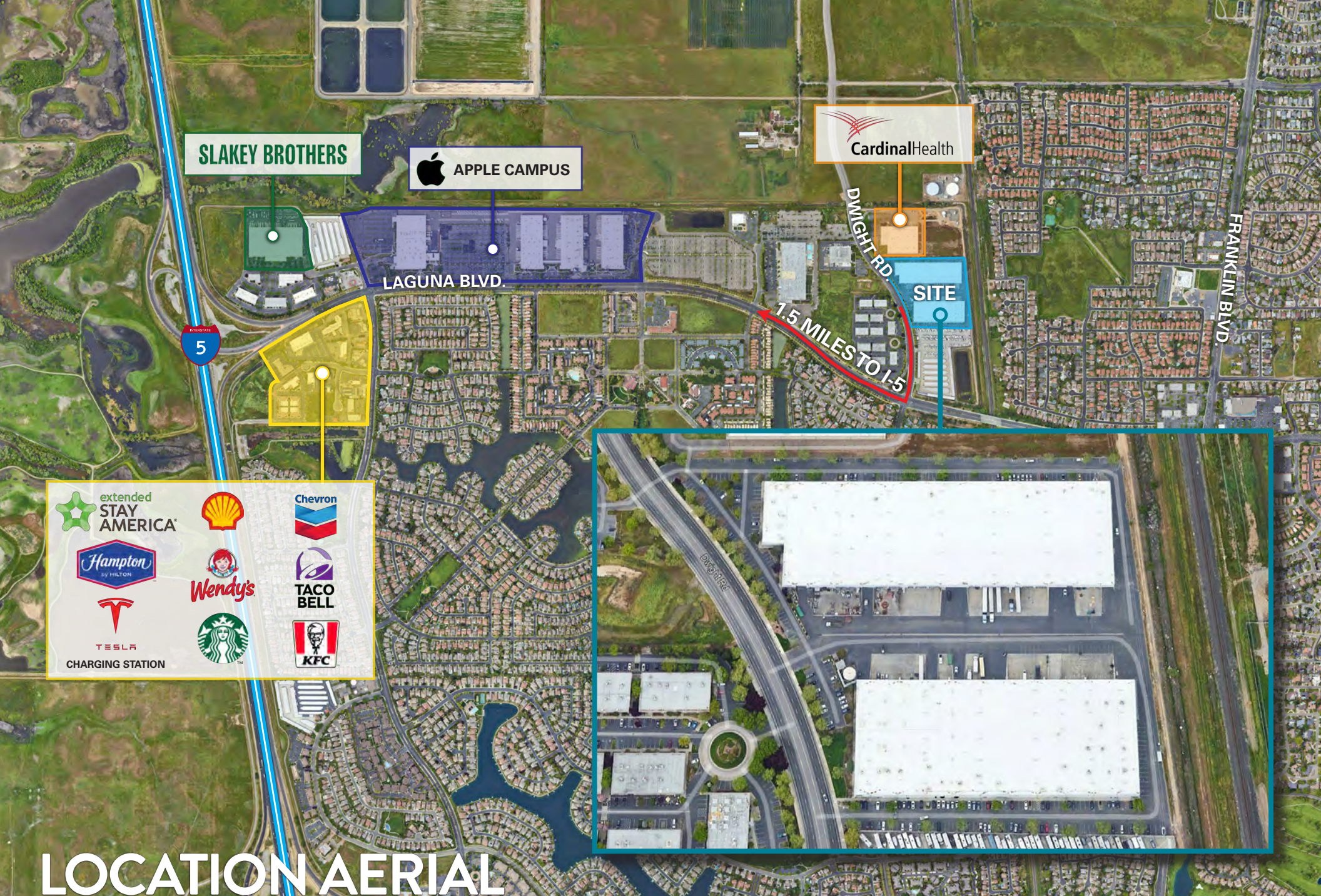
FLOOR PLAN - 3132 DWIGHT

MIKE SMITH 916.569.2352
COLE CUMMINGS 916.569.2366
MATT ALEMANIA 916.569.2363



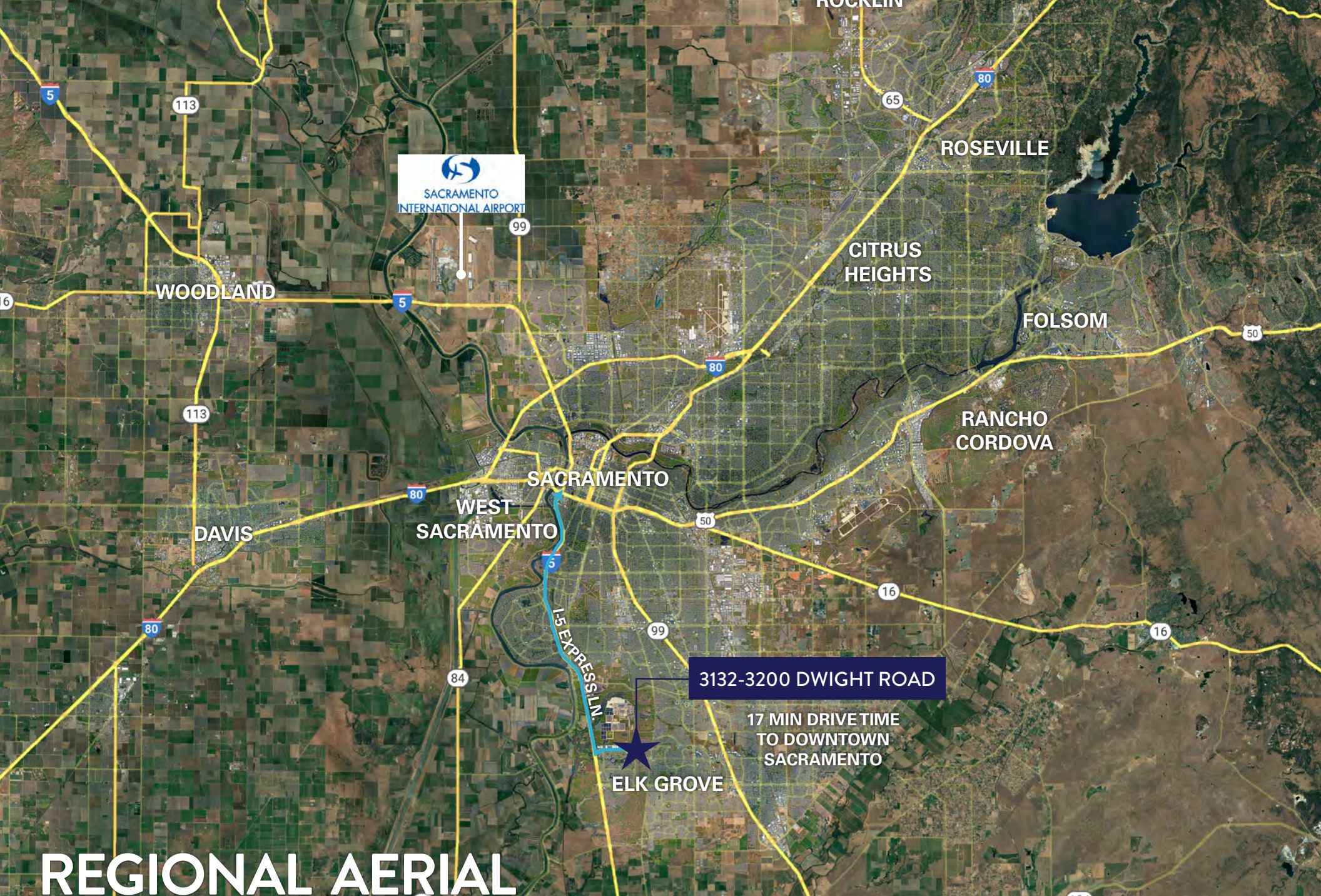
PROPERTY PHOTOS

MIKE SMITH 916.569.2352
COLE CUMMINGS 916.569.2366
MATT ALEMANIA 916.569.2363



LOCATION AERIAL

MIKE SMITH 916.569.2352
COLE CUMMINGS 916.569.2366
MATT ALEMANIA 916.569.2363



REGIONAL AERIAL

MIKE SMITH 916.569.2352
COLE CUMMINGS 916.569.2366
MATT ALEMANIA 916.569.2363

3132-3200 DWIGHT ROAD
ELK GROVE, CA



MIKE SMITH | 916-569-2352 | mike.smith@nmrk.com | CA RE License #01504428

COLE CUMMINGS | 916-569-2366 | cole.cummings@nmrk.com | CA RE License #02106833

MATT ALEMANIA | 916-569-2363 | matthew.alemania@nmrk.com | CA RE License #01958591

980 Ninth Street, Suite 2500, Sacramento, CA, 95814

NEWMARK

**GRACEADA
PARTNERS**

The distributor of this communication is performing acts for which a real estate license is required. The information contained herein has been obtained from sources deemed reliable but has not been verified and no guarantee, warranty or representation, either express or implied, is made with respect to such information. Terms of sale or lease and availability are subject to change or withdrawal without notice. 23-0435 • 08/25