

FOR LEASE



12 ACME ROAD - BREWER, ME

PROPERTY DESCRIPTION:

Multi-tenanted office building featuring remodeled suites with new paint and carpet. Located just off Wilson Street, Brewer's main business corridor, close proximity to restaurants and major retailers. Conveniently located less than two miles from I-395.

SPACE AVAILABLE

Suite 104: 800 +/- sf

Suite 201: 320 +/- sf

Suite 202B: 392 +/- sf

ZONING

General Business District (GB)

PARKING

Ample on-site parking available

LANDLORD PROVIDED SERVICES

Snowplowing, heat, and real estate taxes

PRICE

Suite 104: \$12.50/sf plus electric

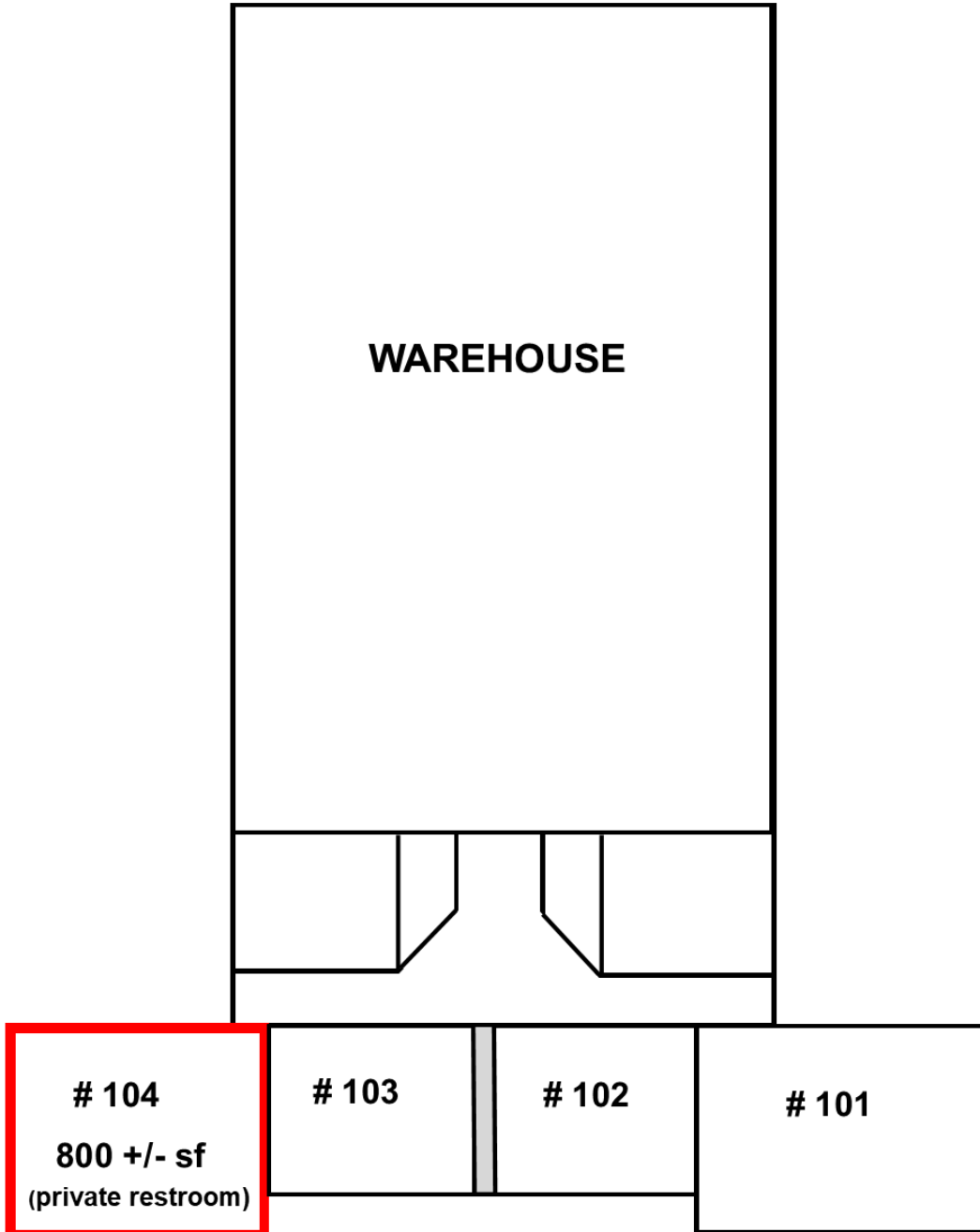
Suites 201 & 202B: \$11.50/sf plus electric

EXISTING TENANTS

All About Travel, Archadeck of Central Maine, A Time to Rise Counseling Services, Central Maine Refrigeration, Community Living Associates, Holistic Psychiatry, Limitless Solutions, Maine Land Services, Morrison Center, BACTS

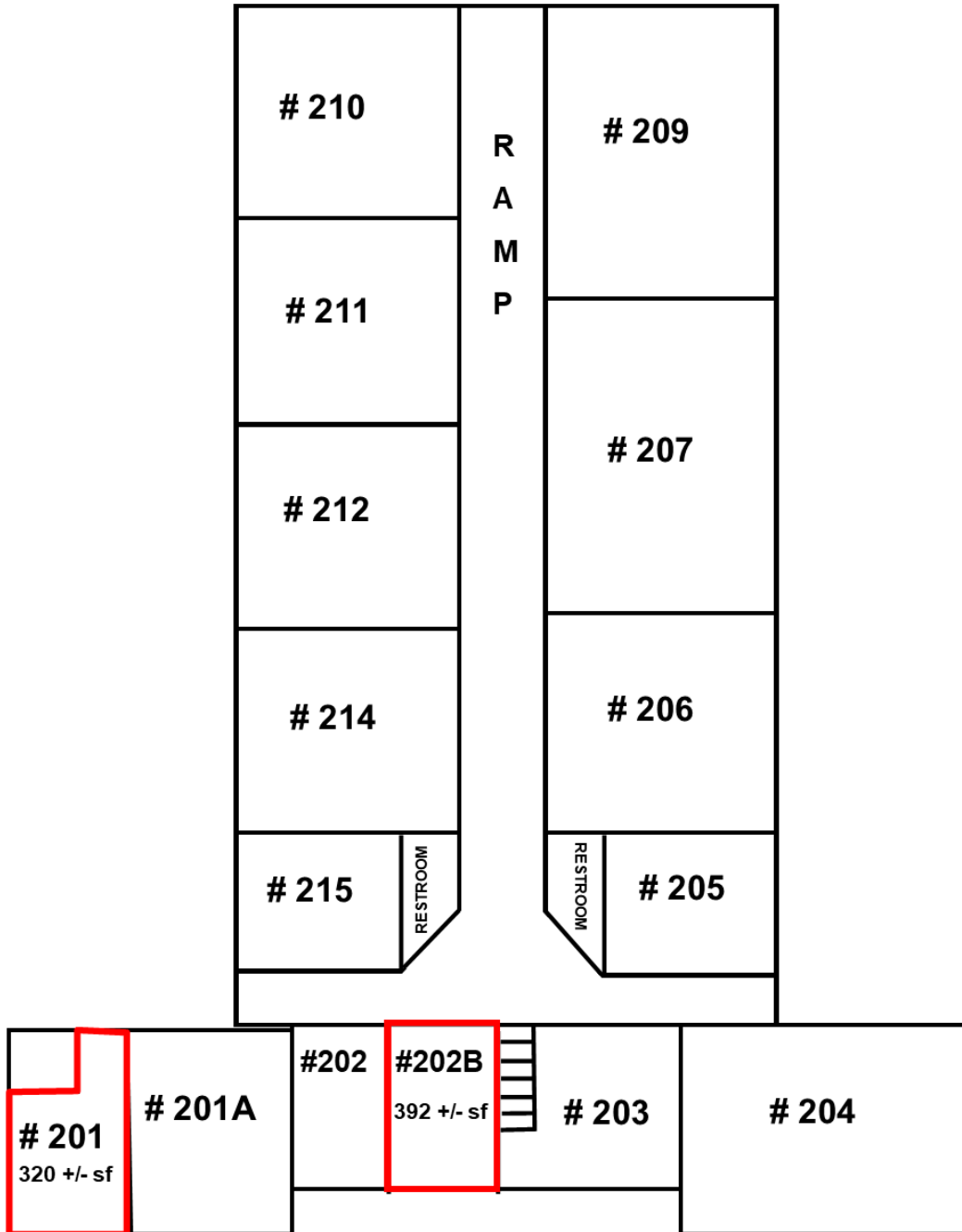
Information furnished is from sources deemed reliable, but no warranty is made to the accuracy thereof. The listing broker hereby discloses that she/he is acting solely as an agent for the seller in the marketing, negotiation, and sale/lease of this property. Broker further discloses that she/he represents the seller's interest and has a fiduciary duty to disclose to the seller information which is material to the sale acquired from the buyer or any other source.

First Floor - Space Available



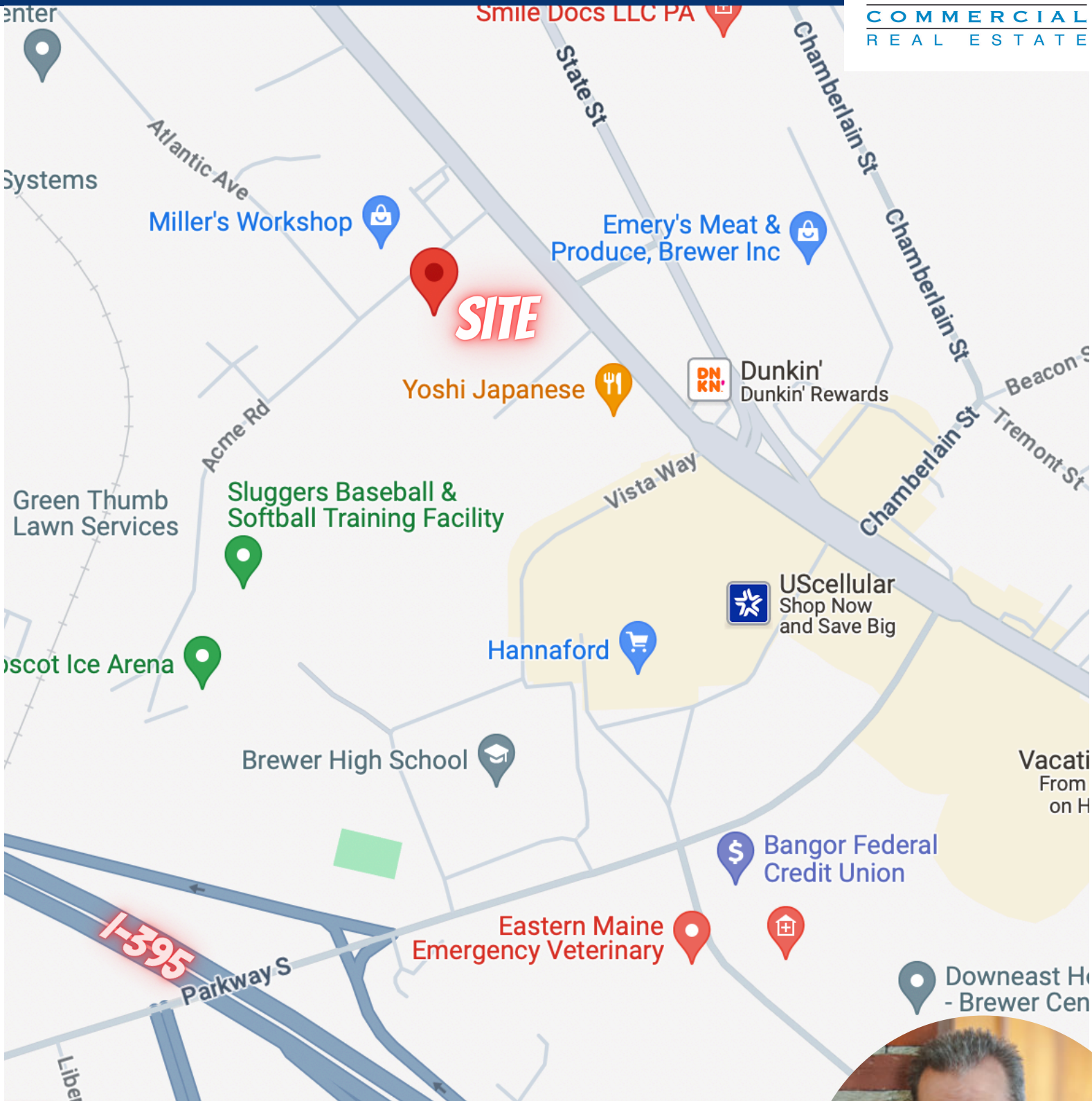
*DRAWING NOT TO SCALE

Second Floor - Space Available



*DRAWING NOT TO SCALE

LOCATION MAP



FOR FURTHER INFO, CONTACT: DAVID HUGHES

dhughes@epsteincommercial.com

epsteincommercial.com

207-945-6222

