

INDUSTRIAL PARK LAUDERHILL

3700-3798 NW 16TH STREET, LAUDERHILL, FL 33311

PROPERTY SUMMARY

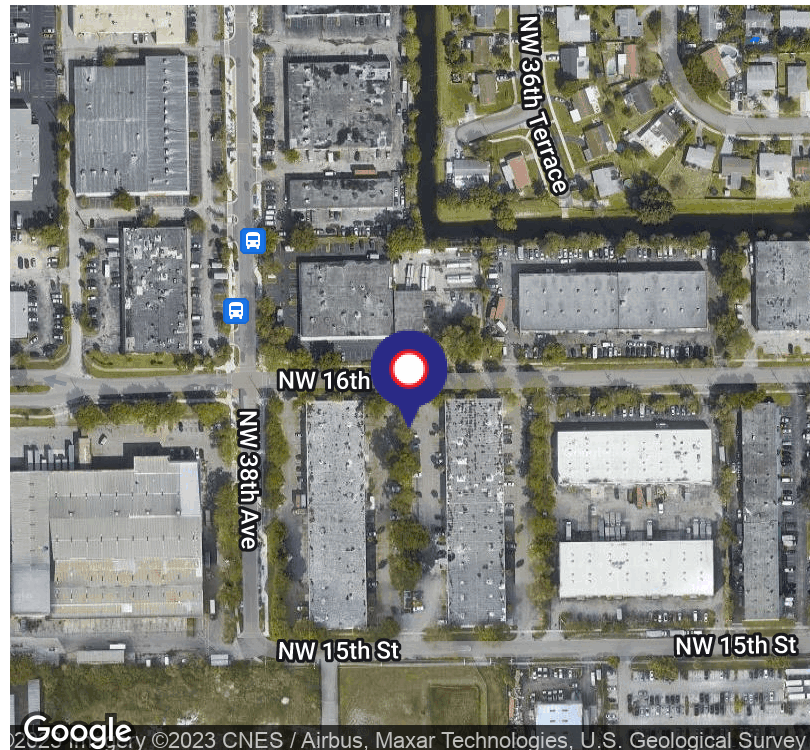


PROPERTY DESCRIPTION

This 81,090 square foot multi-tenant warehouse complex was completely renovated in 2017/2018 and is located ¼ mile north of Sunrise Blvd, and 1½ miles east of the Sunrise Blvd. Turnpike Interchange ideally located directly across the street from the main UPS Terminal for Broward County Florida. Unit sizes from 1,500 square feet; 3,000 square feet; 4,500 square feet; and 6,000 square feet. All units have 12' x 14' overhead doors and 18' ceiling height with three-phase electric. All units have air conditioned offices and bathrooms, but many units have full air conditioning. Great parking, truck access, UPS security presence, and precast concrete Twin-T construction with hurricane impact doors and LED lighting makes this warehouse complex very desirable

PROPERTY HIGHLIGHTS

- 12' x 14' Grade level overhead doors
- 3 phase power
- 18' clear ceiling height
- Ample parking
- Hurricane Impact doors
- LED lighting



ANGIE WEAVER

Lauderdale Lakes and Lauderhill Manager
 Direct: 954.485.9200 | Cell: 917.645.2339
 angie@levyrai.com



FOR LEASE

INDUSTRIAL PARK LAUDERHILL

3700-3798 NW 16TH STREET, LAUDERHILL, FL 33311

ADDITIONAL PHOTOS



ANGIE WEAVER

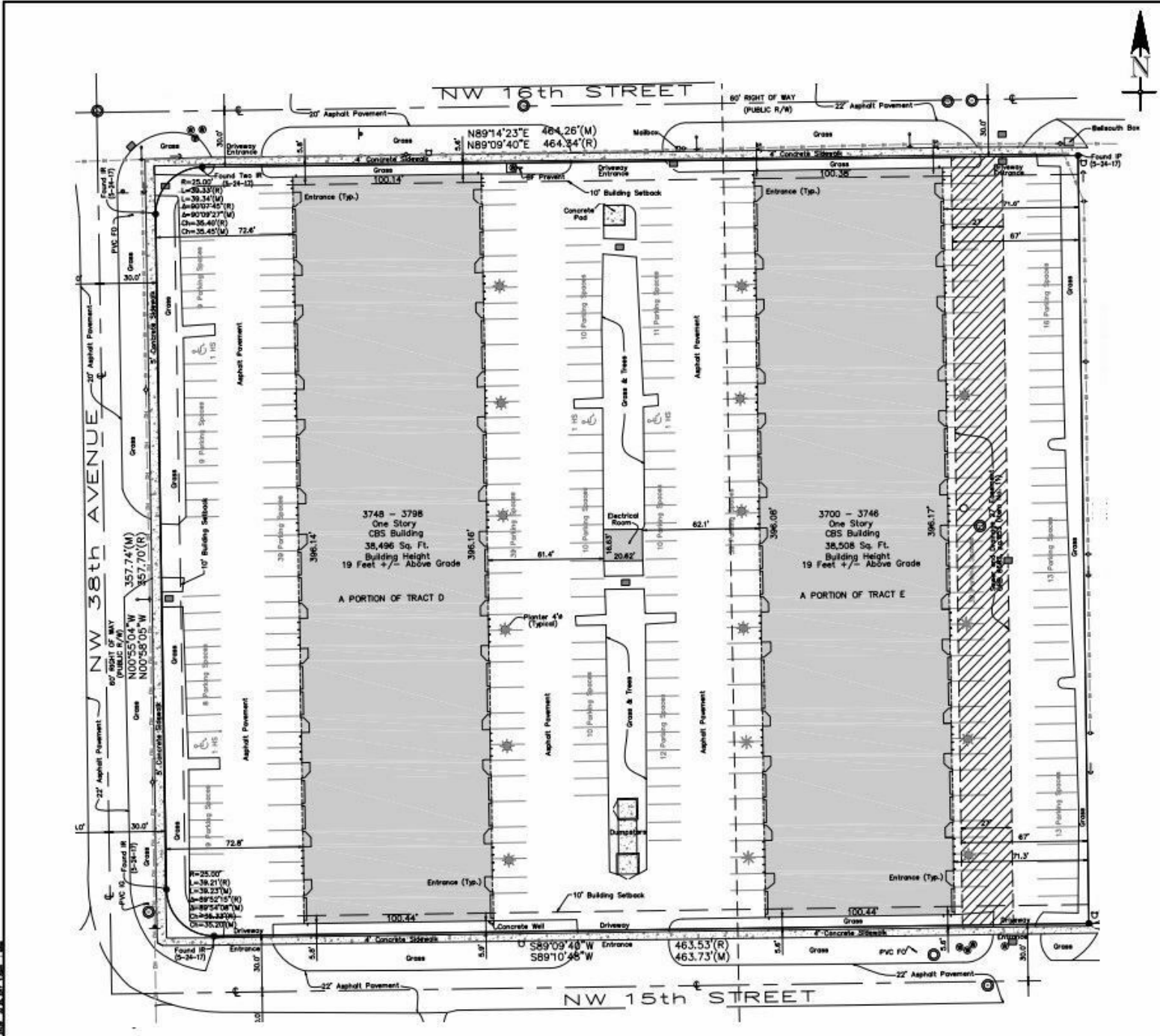
Lauderdale Lakes and Lauderdale Manager
Direct: 954.485.9200 | Cell: 917.645.2339
angie@levyrai.com



INDUSTRIAL PARK LAUDERHILL

3700-3798 NW 16TH STREET, LAUDERHILL, FL 33311

SITE PLAN



ANGIE WEAVER

Lauderdale Lakes and Lauderdale Hill Manager
Direct: 954.485.9200 | Cell: 917.645.2339
angie@levyrai.com

